

Appendix 13.10 Ecological Acoustic Recorder (EAR) Ambient Noise Data

Table 1: Deployment Details of EARs Units

Site	Dep #	Latitude	Longitude	Data Start	Data End	Number of Files
A1	1	22 18.082N	113 52.834E	06/12/2012	30/01/2013	16856
A2 ⁽¹⁾	1	22 19.228N	113 54.391E	18/01/2013	30/01/2013	16413
A3 ⁽²⁾	1					
A4 ⁽²⁾	1					
A5	1	22 20.295N	113 53.918E	06/12/2012	30/01/2013	16865
A6	1	22 19.228N	113 54.391E	06/12/2012	See Note ⁽³⁾	See Note ⁽³⁾
A1	2	22 18.082N	113 52.834E	04/02/2013	01/03/2013	8382
A2	2	22 19.228N	113 54.391E	04/02/2013	04/02/2013	63 ⁽⁴⁾
A3	2	22 19.527N	113 55.349E	19/01/2013	01/03/2013	12952
A4	2	22 19.632N	113 56.339E	31/01/2013	01/03/2013	8552
A5	2	22 20.295N	113 53.918E	04/02/2013	01/03/2013	8367
A1	3	22 18.082N	113 52.834E	06/03/2013	08/05/2013	18039
A2	3	22 19.228N	113 54.391E	06/03/2013	08/05/2013	17915
A3	3	22 19.527N	113 55.349E	06/03/2013	08/05/2013	18034
A4	3	22 19.632N	113 56.339E	06/03/2013	08/05/2013	18039
A5	3	22 20.295N	113 53.918E	06/03/2013	08/05/2013	18037
A1	4	22 18.082N	113 52.834E	15/05/2013	01/06/2013	5037
A2	4	22 19.228N	113 54.391E	15/05/2013	08/06/2013	6999
A3	4	22 19.527N	113 55.349E	15/05/2013	10/06/2013	7505
A4	4	22 19.632N	113 56.339E	15/05/2013	11/06/2013	7974
A5	4	22 20.295N	113 53.918E	22/05/2013	05/06/2013	4142
A1	5	22 18.082N	113 52.834E	15/06/2013	15/08/2013	17766
A2	5	22 19.228N	113 54.391E	15/06/2013	15/08/2013	17766
A3	5	22 19.527N	113 55.349E	15/06/2013	15/08/2013	17766
A4	5	22 19.632N	113 56.339E	15/06/2013	15/08/2013	17766
A5	5	22 20.295N	113 53.918E	15/06/2013	15/08/2013	17766
A1	6	22 18.082N	113 52.834E	25/08/2013	19/09/2013	7407
A2	6	22 19.228N	113 54.391E	25/08/2013	19/09/2013	6722
A3	6	22 19.527N	113 55.349E	25/08/2013	19/09/2013	7936
A4	6	22 19.632N	113 56.339E	25/08/2013	19/09/2013	6646
A5	6	22 20.295N	113 53.918E	30/08/2013	19/09/2013	6487
A1	7	22 18.082N	113 52.834E	27/09/2013	05/11/2013	11520
A2	7	22 19.228N	113 54.391E	27/09/2013	05/11/2013	11520

Expansion of Hong Kong International Airport into a Three-Runway System Environmental Impact Assessment Report

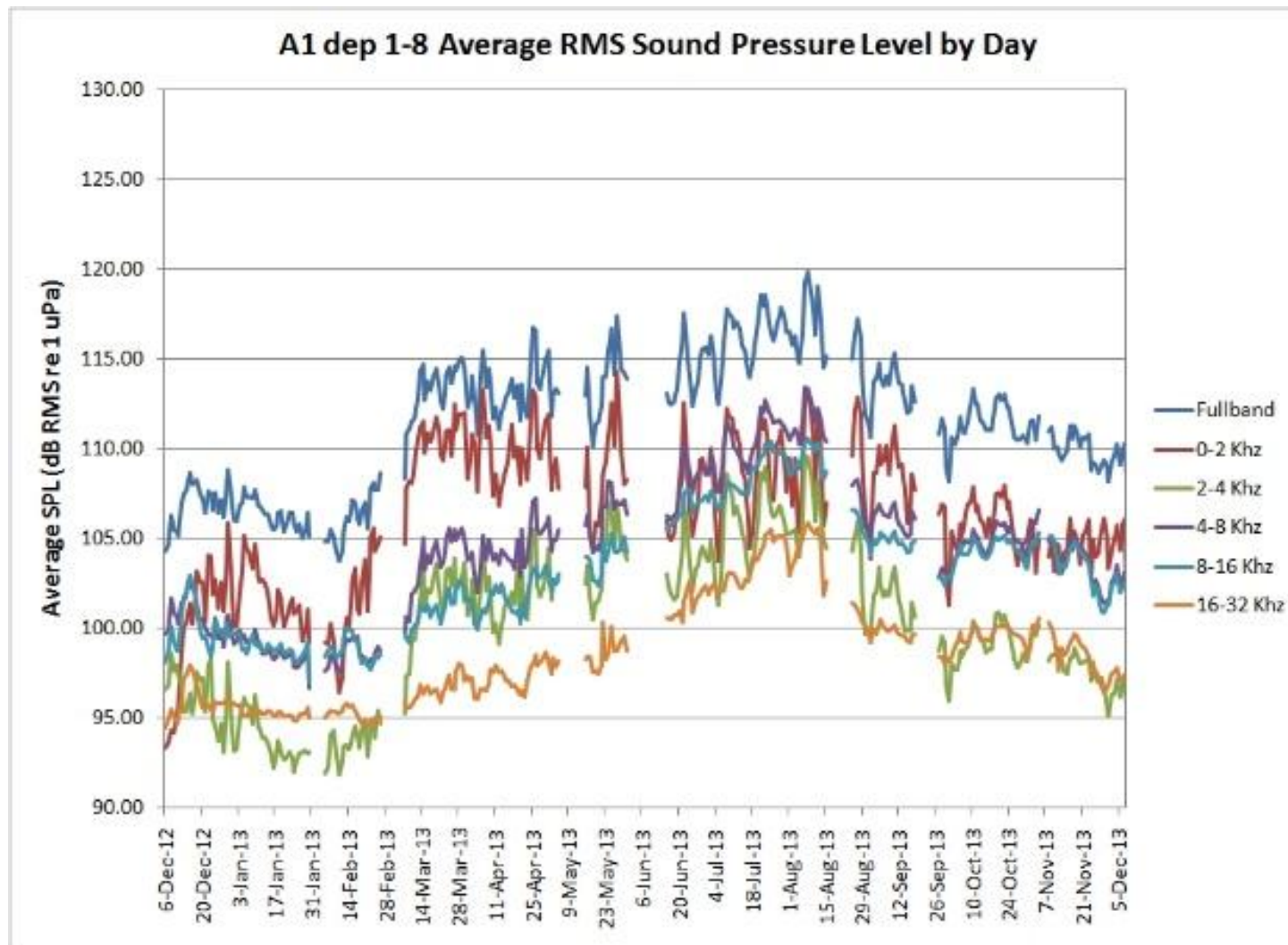
Site	Dep #	Latitude	Longitude	Data Start	Data End	Number of Files
A3	7	22 19.527N	113 55.349E	27/09/2013	05/11/2013	11520
A4	7	22 19.632N	113 56.339E	27/09/2013	05/11/2013	11520
A5	7	22 20.295N	113 53.918E	27/09/2013	05/11/2013	11520
A1	8	22 18.082N	113 52.834E	08/11/2013	07/12/2013	8640
A2	8	22 19.228N	113 54.391E	08/11/2013	07/12/2013	8640
A3	8	22 19.527N	113 55.349E	08/11/2013	07/12/2013	8640
A4	8	22 19.632N	113 56.339E	08/11/2013	07/12/2013	8640
A5	8	22 20.295N	113 53.918E	08/11/2013	06/12/2013	8341

Notes:

- (1) The unit at site A2 was originally at A6 and was moved on 18/01/13.
- (2) Not deployed, location issue.
- (3) A6 was moved to A2 on 18/01/13.
- (4) Unit malfunction, no recording past file 63.

Expansion of Hong Kong International Airport into a Three-Runway System Environmental Impact Assessment Report

Figure 1: Average RMS Sound Pressure Level for EAR A1.



Expansion of Hong Kong International Airport into a Three-Runway System Environmental Impact Assessment Report

Figure 2: Average RMS Sound Pressure Level in Winter for EAR A1

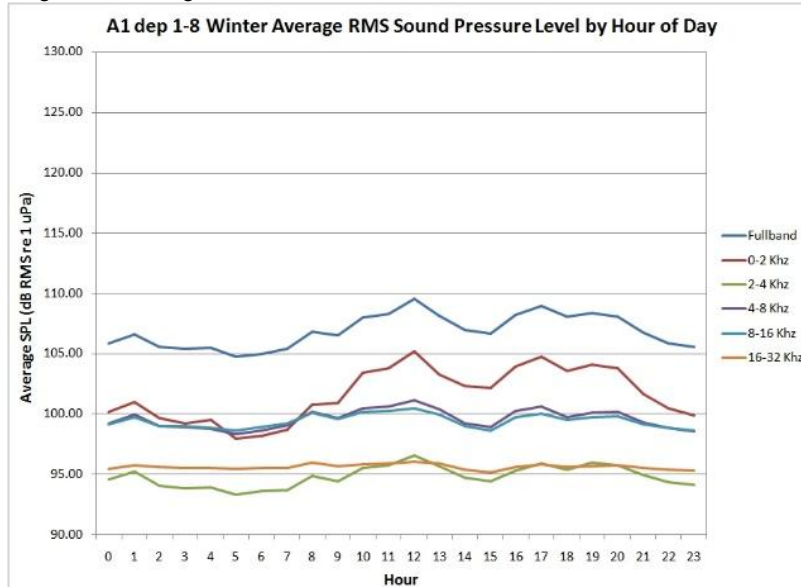


Figure 3: Average RMS Sound Pressure Level in Spring for EAR A1

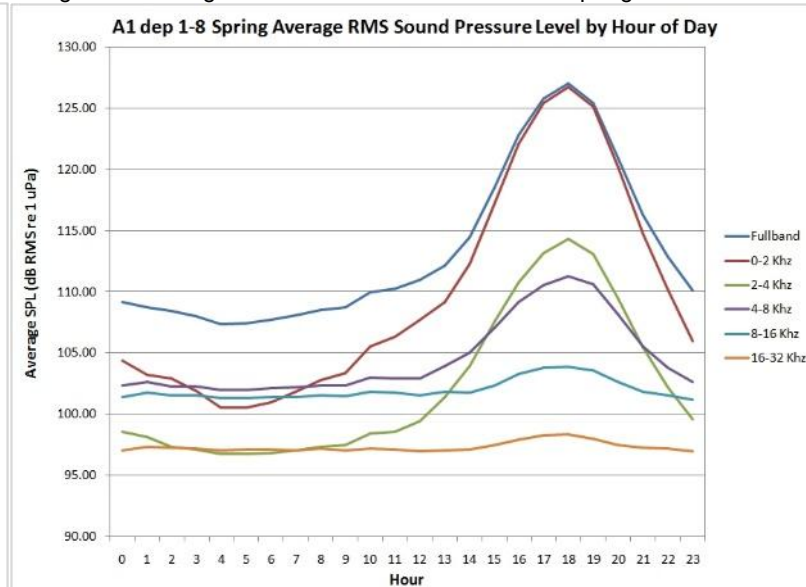


Figure 4: Average RMS Sound Pressure Level in Summer for EAR A1

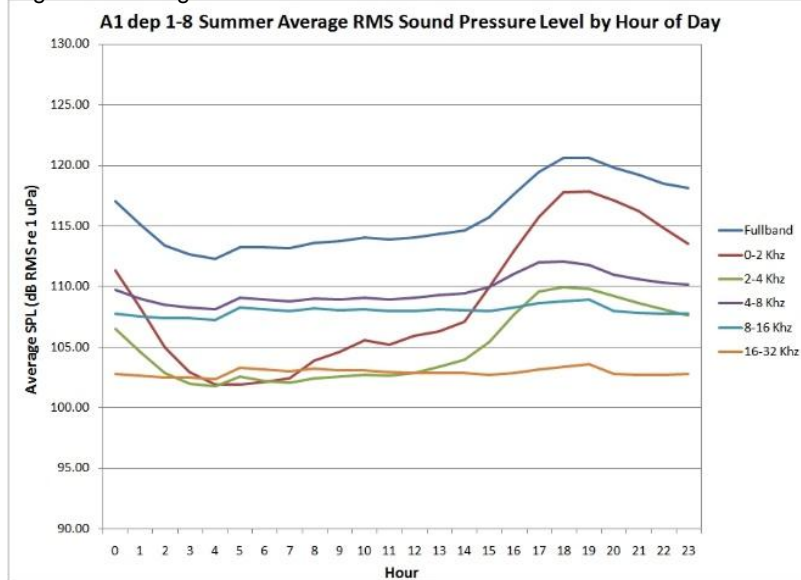
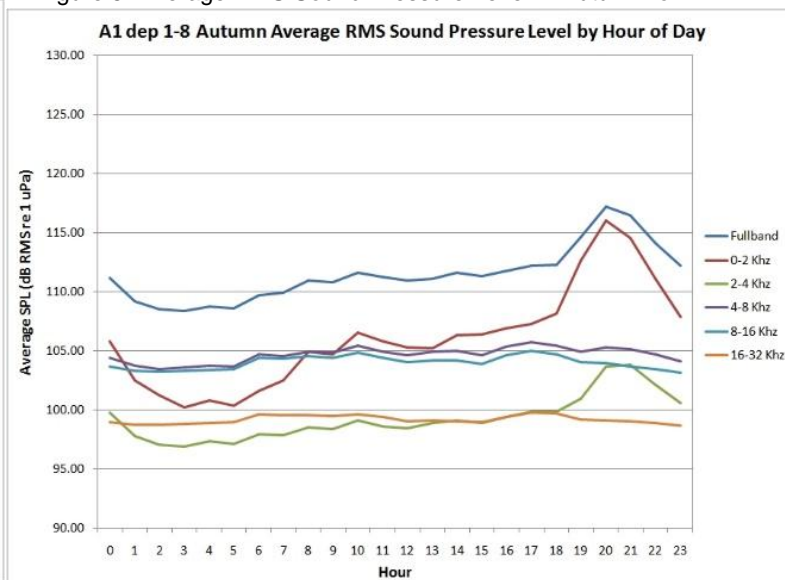


Figure 5: Average RMS Sound Pressure Level in Autumn for EAR A1



Expansion of Hong Kong International Airport into a Three-Runway System Environmental Impact Assessment Report

Figure 6: Average RMS Sound Pressure Level in Dry Season for EAR A1

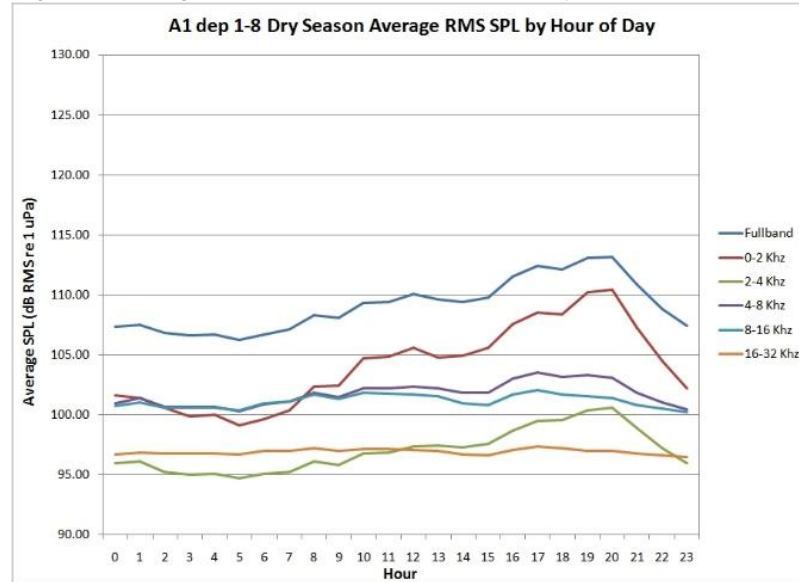
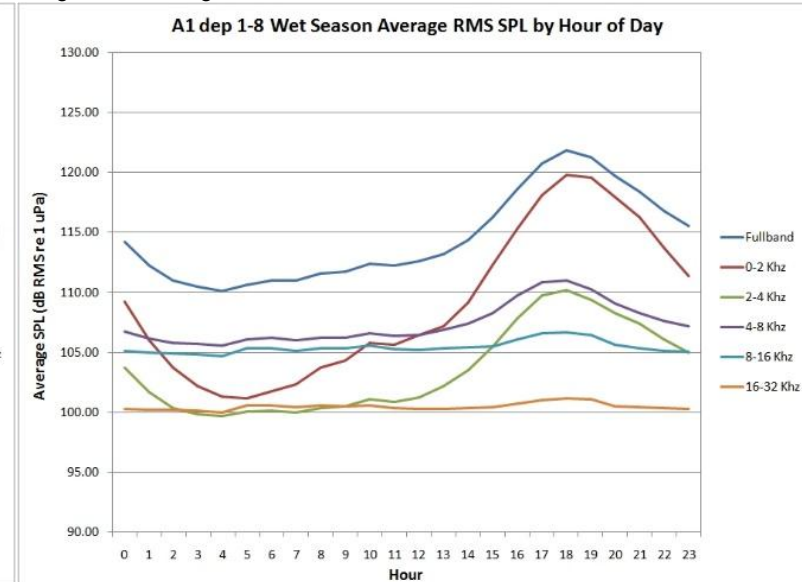
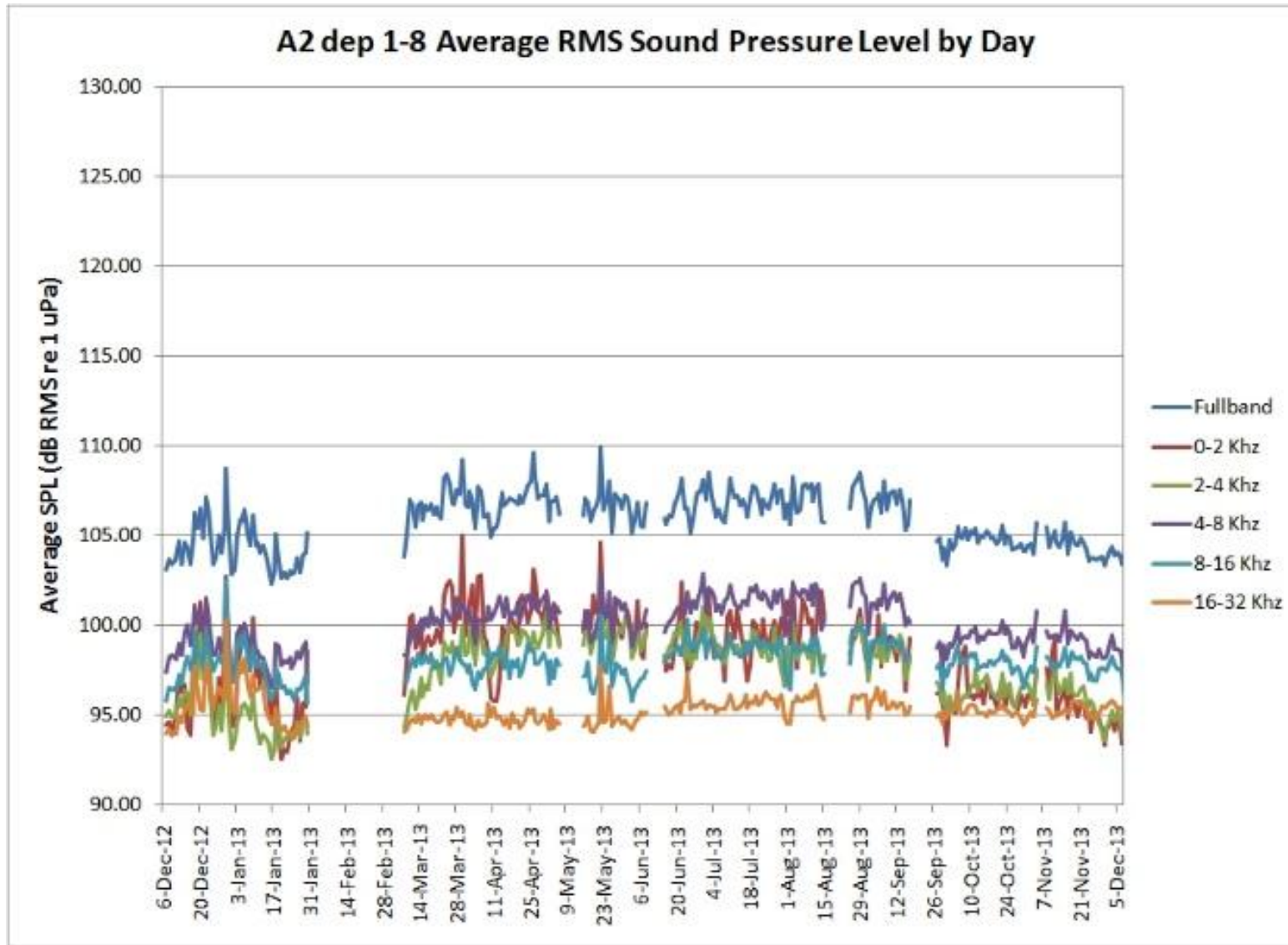


Figure 7: Average RMS Sound Pressure Level in Wet Season for EAR A1



Figures 8: Average RMS Sound Pressure Level for EAR A2.



Expansion of Hong Kong International Airport into a Three-Runway System Environmental Impact Assessment Report

Figure 9: Average RMS Sound Pressure Level in Winter for EAR A2

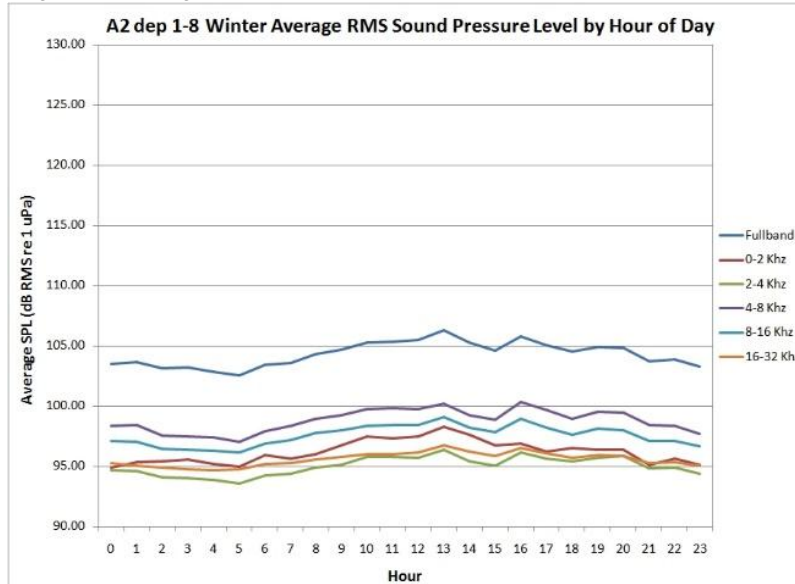


Figure 10: Average RMS Sound Pressure Level in Spring for EAR A2

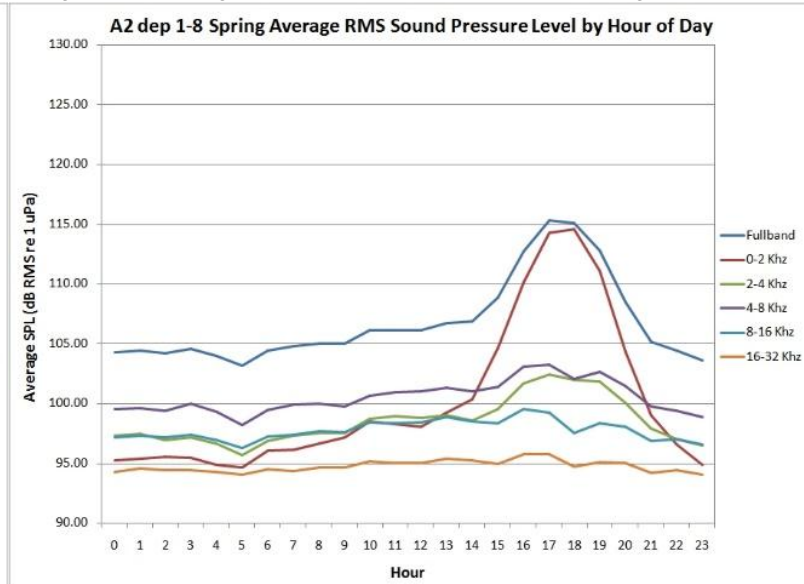


Figure 11: Average RMS Sound Pressure Level in Summer for EAR A2

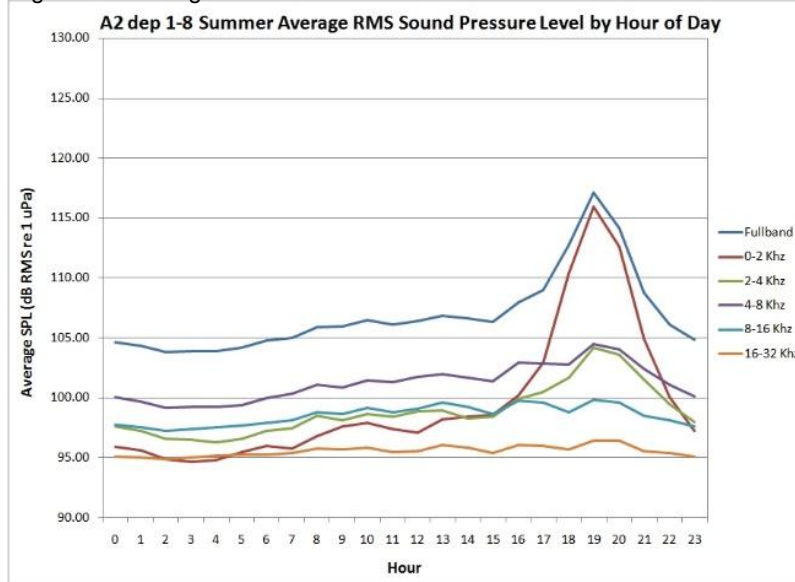
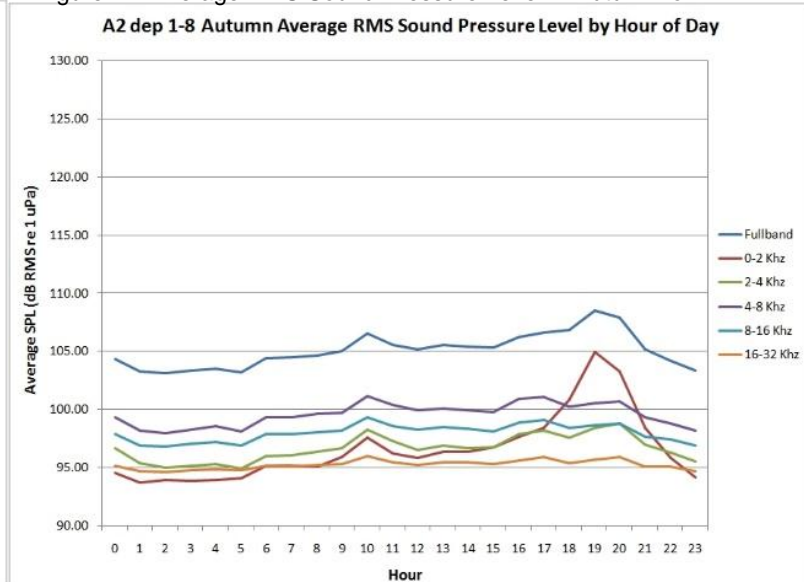


Figure 12: Average RMS Sound Pressure Level in Autumn for EAR A2



Expansion of Hong Kong International Airport into a Three-Runway System Environmental Impact Assessment Report

Figure 13: Average RMS Sound Pressure Level in Dry Season for EAR A2

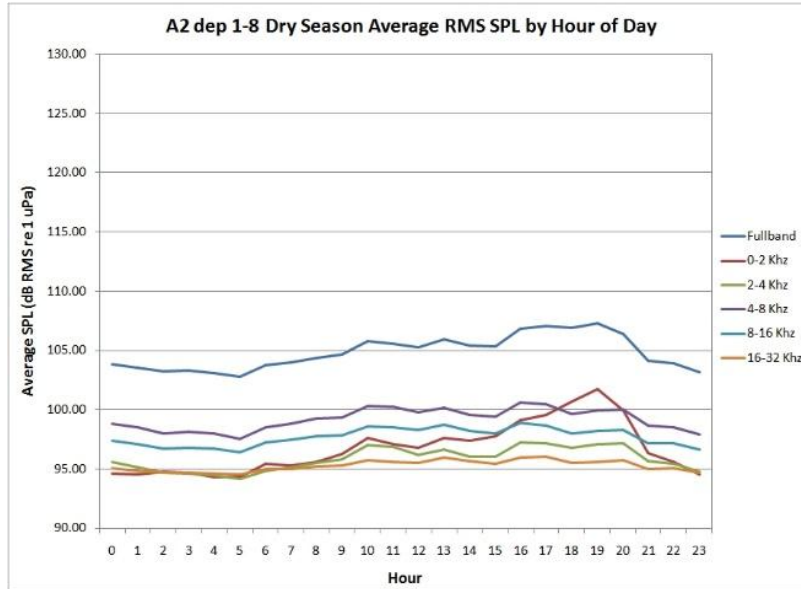
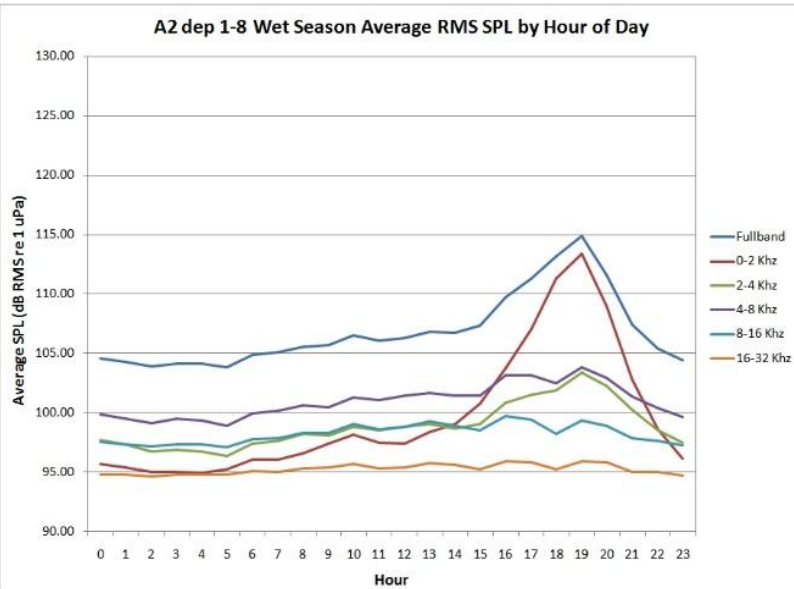
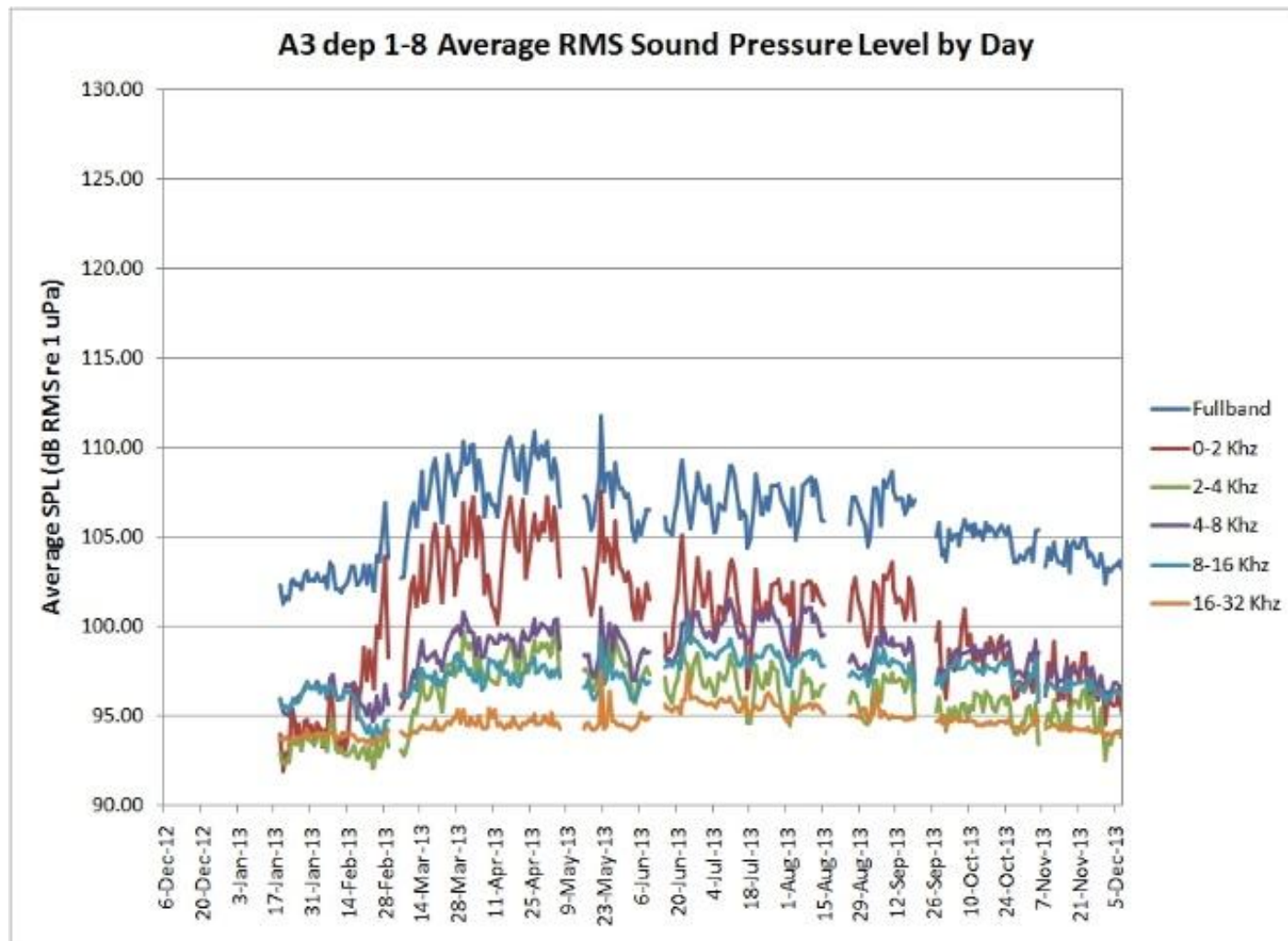


Figure 14: Average RMS Sound Pressure Level in Wet Season for EAR A2



Expansion of Hong Kong International Airport into a Three-Runway System Environmental Impact Assessment Report

Figures 15: Average RMS Sound Pressure Level for EAR A3.



Expansion of Hong Kong International Airport into a Three-Runway System Environmental Impact Assessment Report

Figure 16: Average RMS Sound Pressure Level in Winter for EAR A3

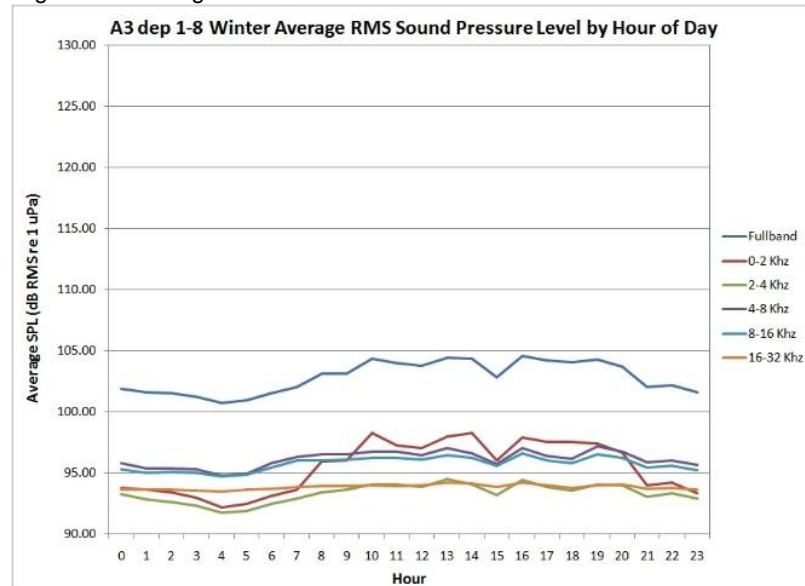


Figure 17: Average RMS Sound Pressure Level in Spring for EAR A3

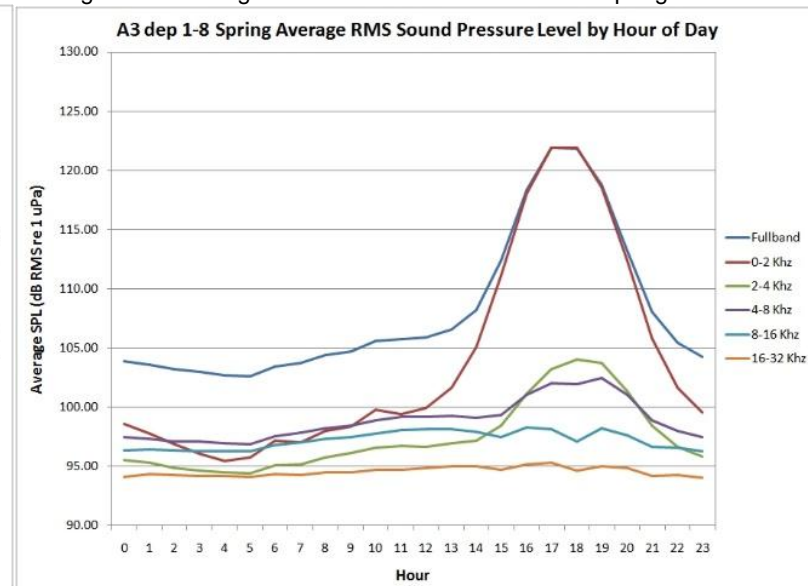


Figure 18: Average RMS Sound Pressure Level in Summer for EAR A3

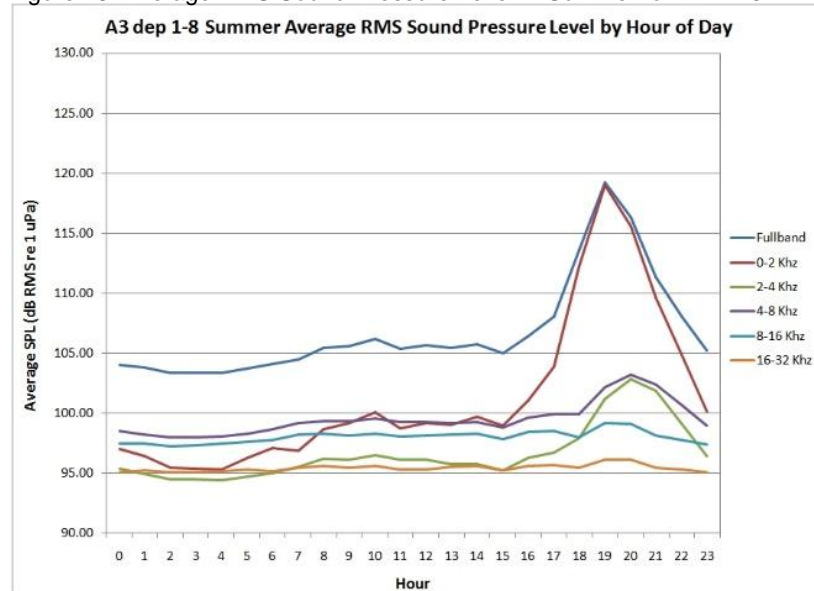
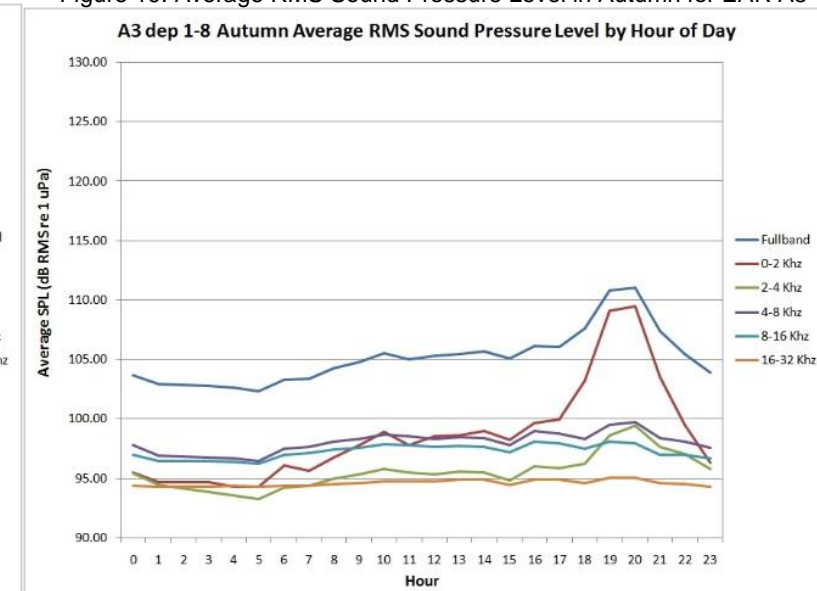


Figure 19: Average RMS Sound Pressure Level in Autumn for EAR A3



Expansion of Hong Kong International Airport into a Three-Runway System Environmental Impact Assessment Report

Figure 20: Average RMS Sound Pressure Level in Dry Season for EAR A3

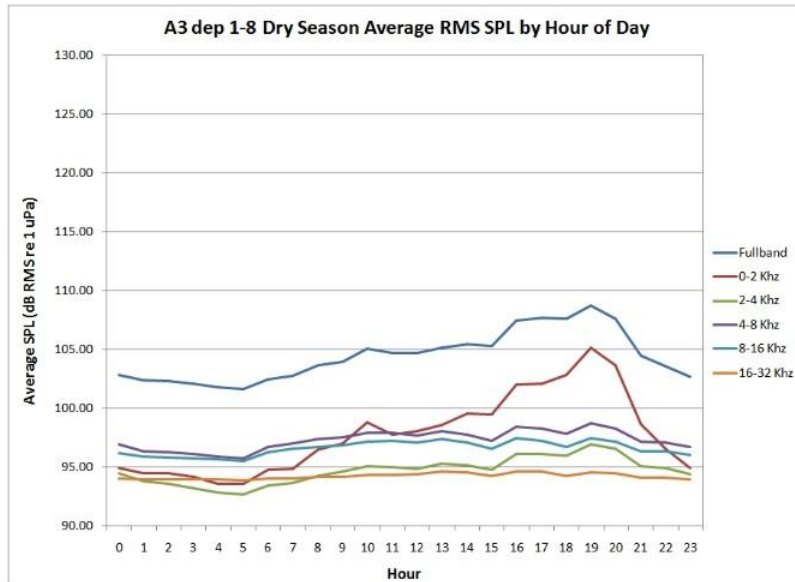
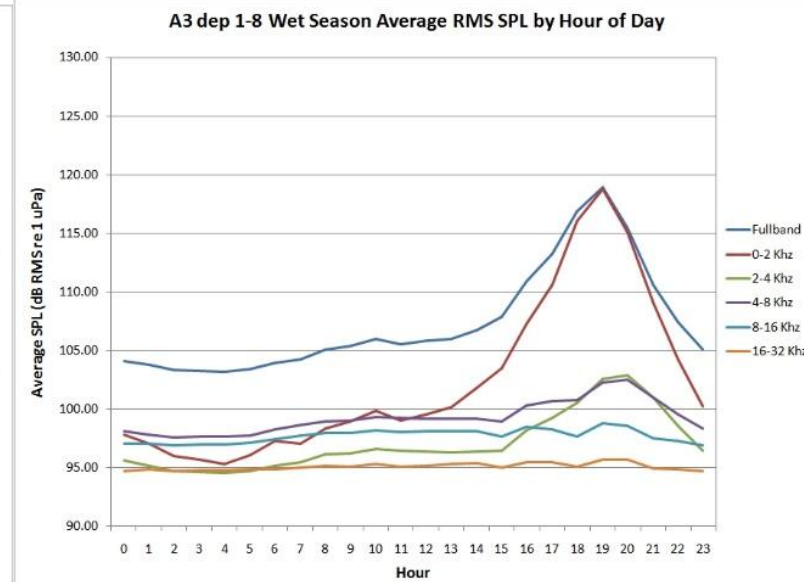
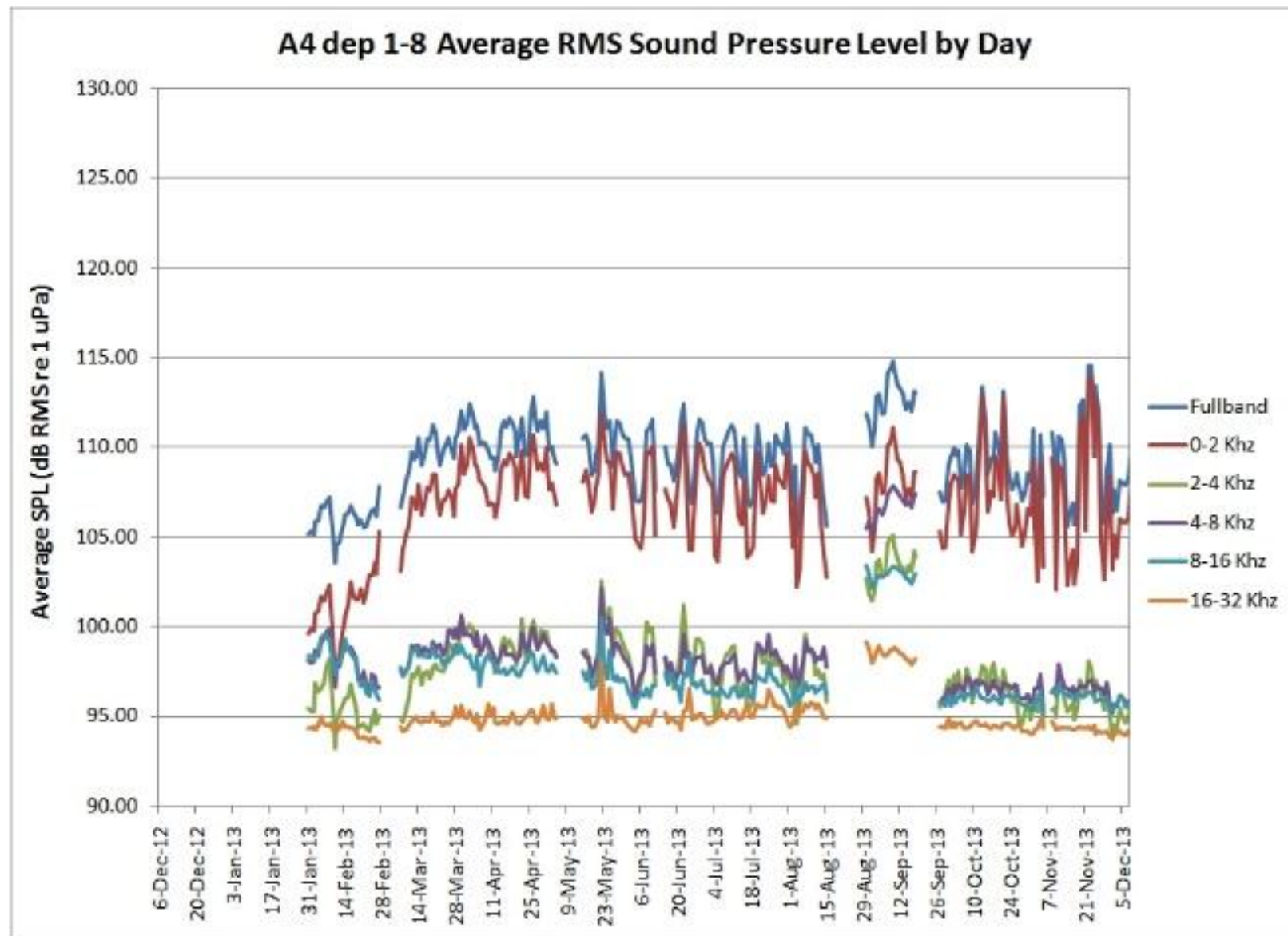


Figure 21: Average RMS Sound Pressure Level in Wet Season for EAR A3



Expansion of Hong Kong International Airport into a Three-Runway System
Environmental Impact Assessment Report

Figures 22: Average RMS Sound Pressure Level for EAR A4.



Expansion of Hong Kong International Airport into a Three-Runway System Environmental Impact Assessment Report

Figure 23: Average RMS Sound Pressure Level in Winter for EAR A4

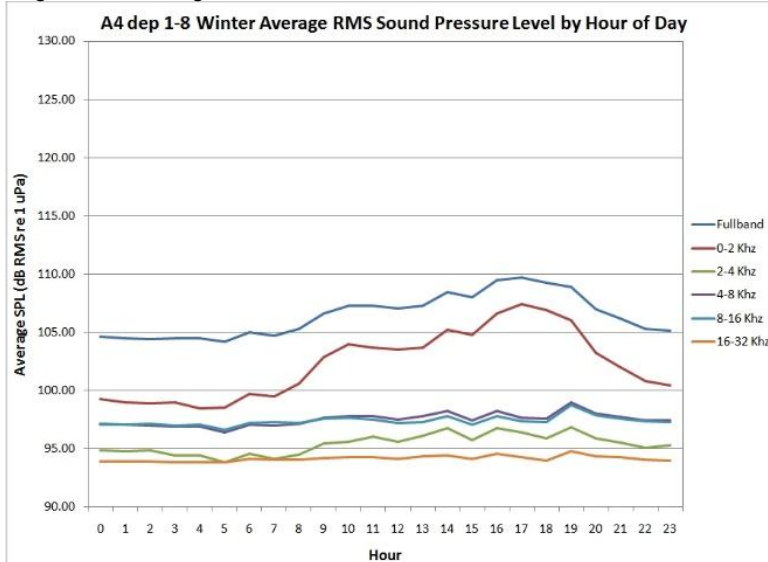


Figure 24: Average RMS Sound Pressure Level in Spring for EAR A4

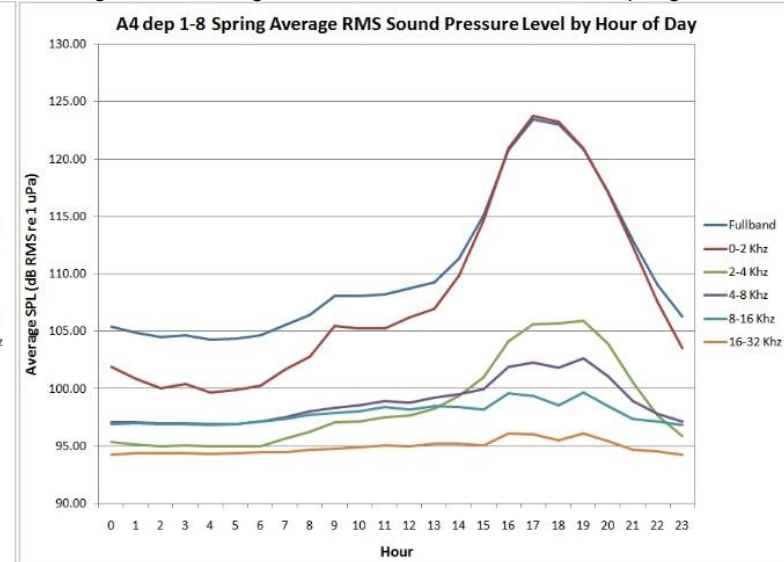


Figure 25: Average RMS Sound Pressure Level in Summer for EAR A4

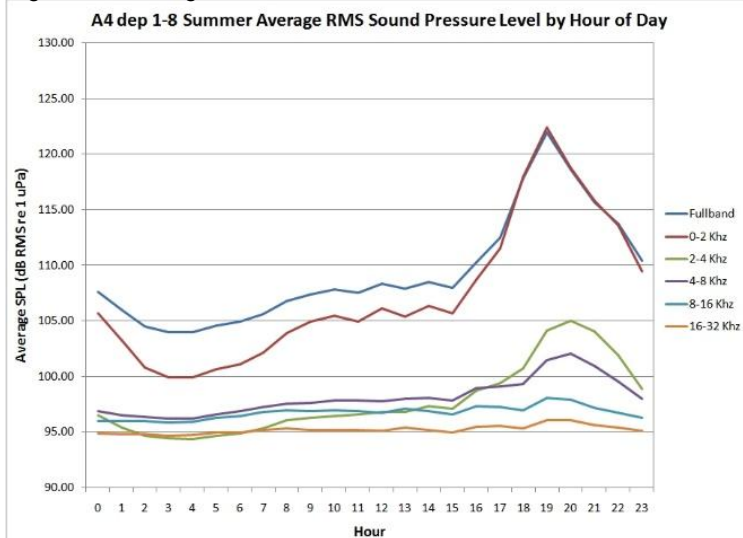
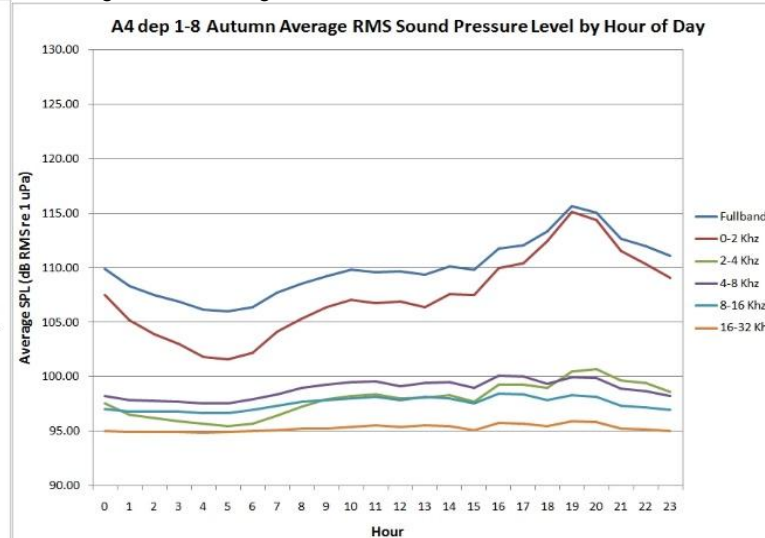


Figure 26: Average RMS Sound Pressure Level in Autumn for EAR A4



Expansion of Hong Kong International Airport into a Three-Runway System Environmental Impact Assessment Report

Figure 27: Average RMS Sound Pressure Level in Dry Season for EAR A4

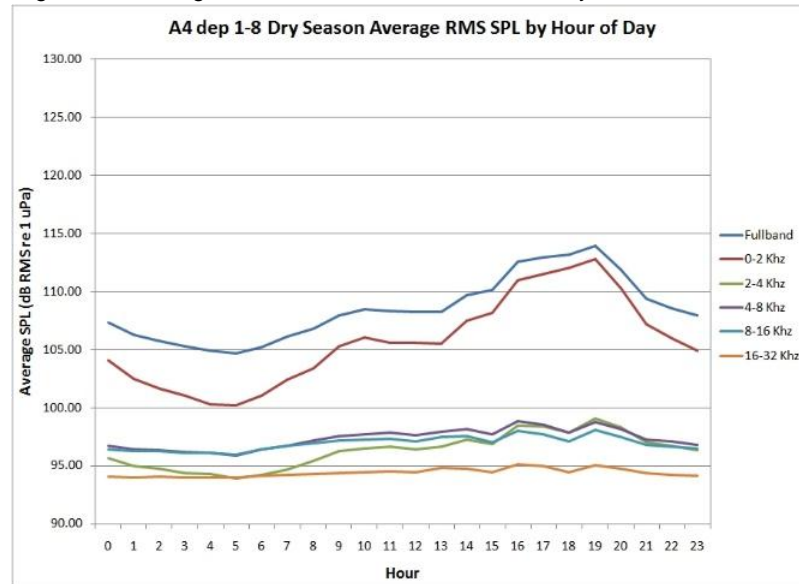
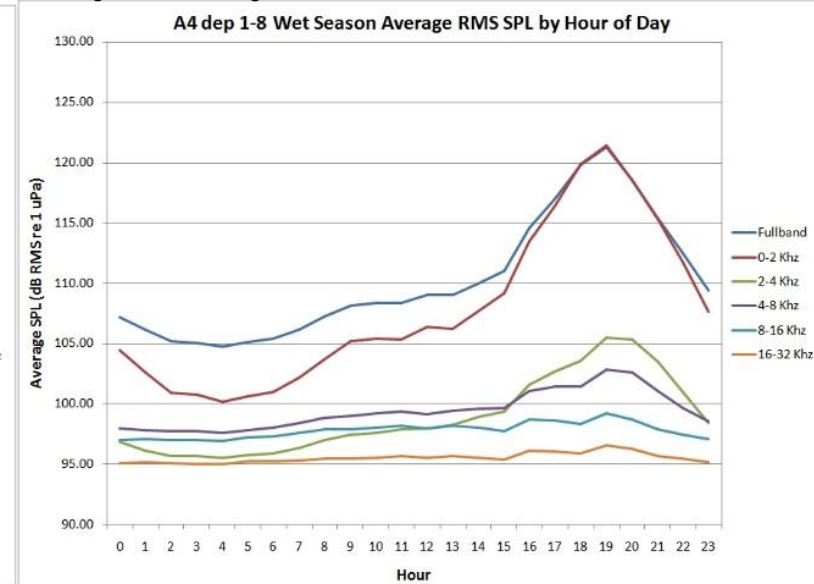
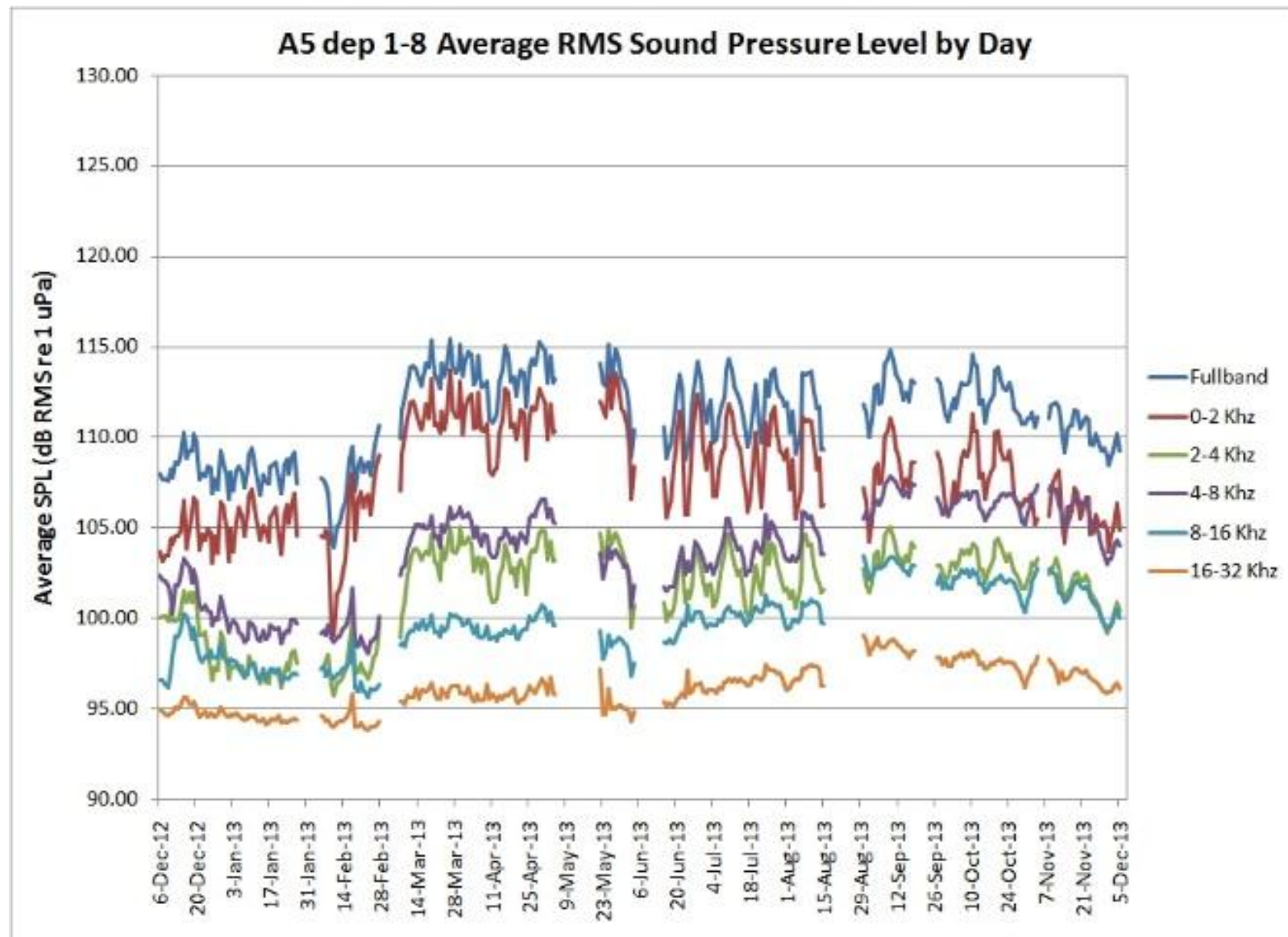


Figure 28: Average RMS Sound Pressure Level in Wet Season for EAR A4



Expansion of Hong Kong International Airport into a Three-Runway System
Environmental Impact Assessment Report

Figures 29: Average RMS Sound Pressure Level in Dry and Wet Seasons for EAR A5.



Expansion of Hong Kong International Airport into a Three-Runway System Environmental Impact Assessment Report

Figure 30: Average RMS Sound Pressure Level in Winter for EAR A5

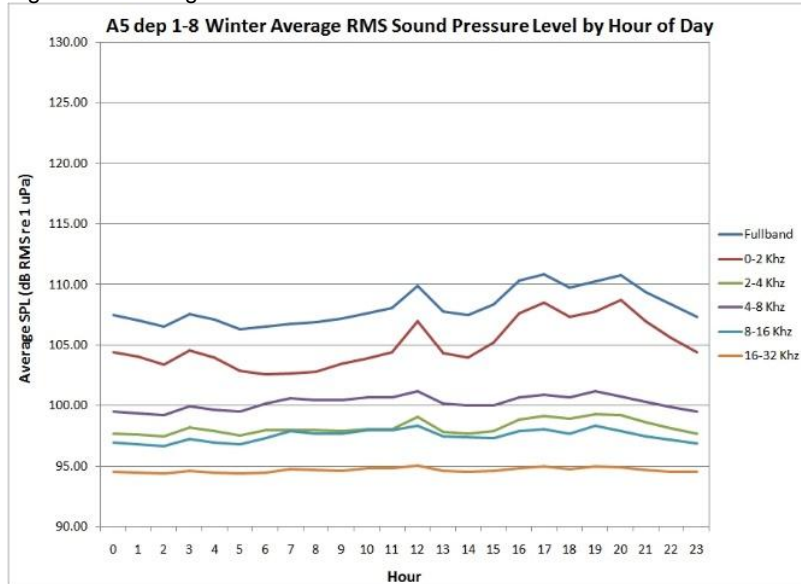


Figure 31: Average RMS Sound Pressure Level in Spring for EAR A5

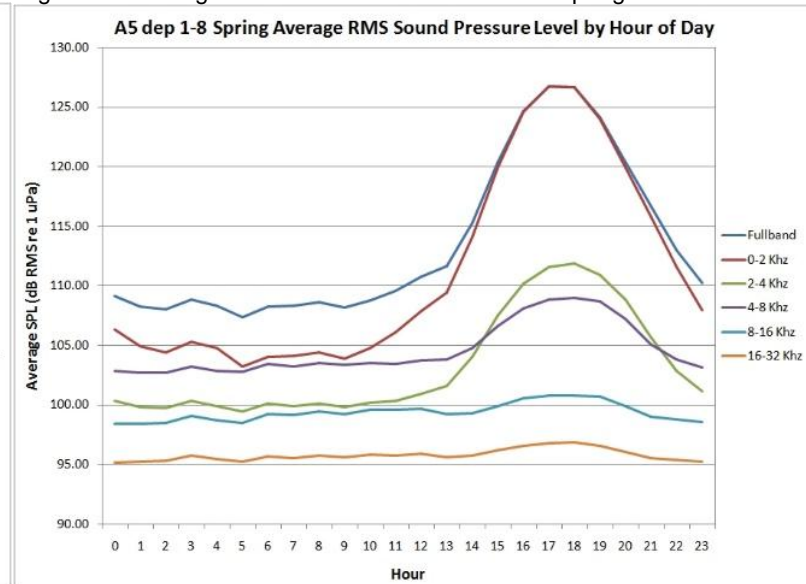


Figure 32: Average RMS Sound Pressure Level in Summer for EAR A5

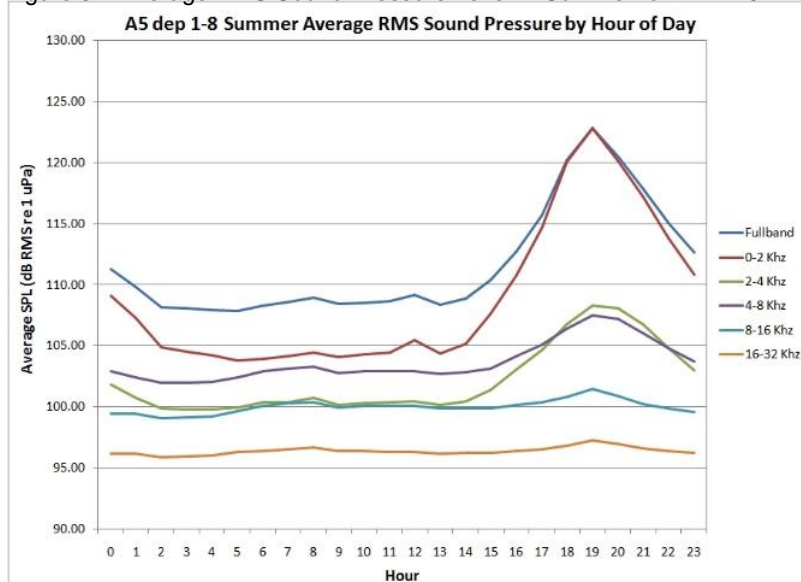
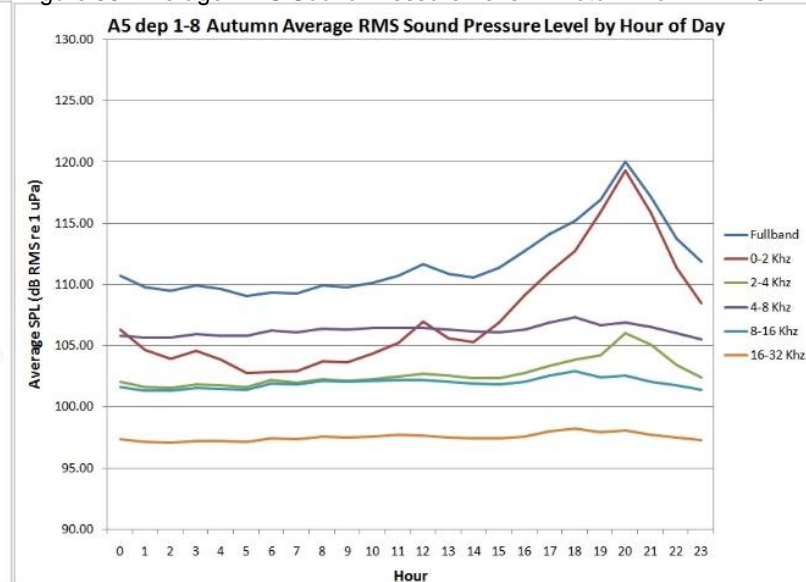


Figure 33: Average RMS Sound Pressure Level in Autumn for EAR A5



Expansion of Hong Kong International Airport into a Three-Runway System Environmental Impact Assessment Report

Figure 34: Average RMS Sound Pressure Level in Dry Season for EAR A5

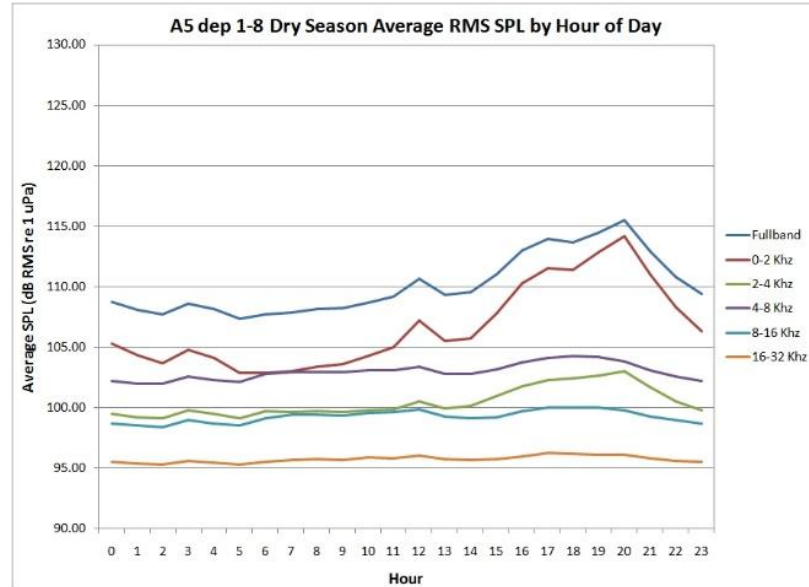


Figure 35: Average RMS Sound Pressure Level in Wet Season for EAR A5

