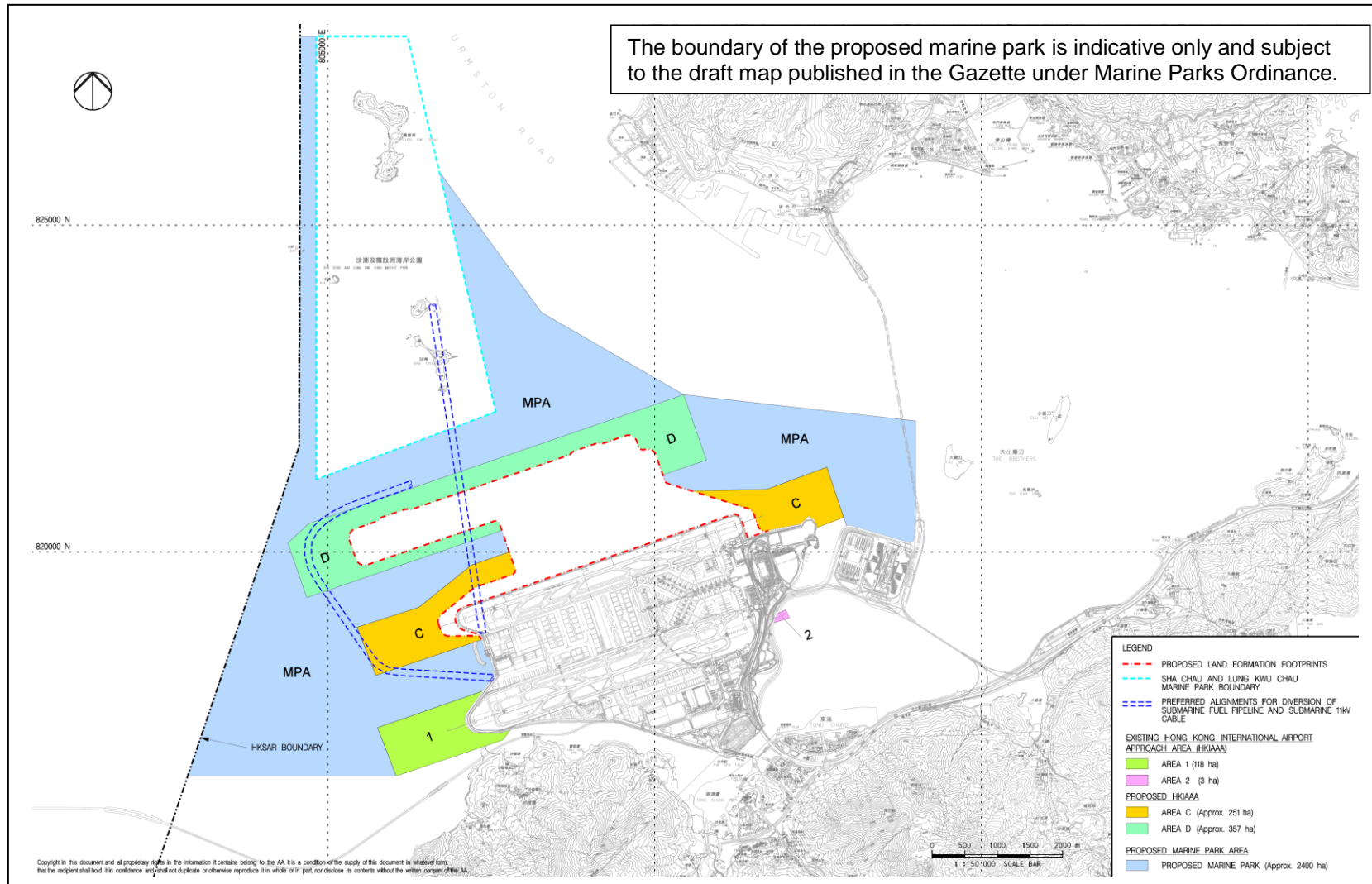


## Appendix 13.16 Proposed Marine Park Matrix Scheme



308875/ENL/ENL/03/07/C March 2014

P:\Hong Kong\ENL\PROJECTS\308875 3rd runway\03 Deliverables\07 Final EIA Report\Appendices\Ch 13 Marine Ecology\Appendix 13.16 Proposed Marine Park Matrix Scheme.doc