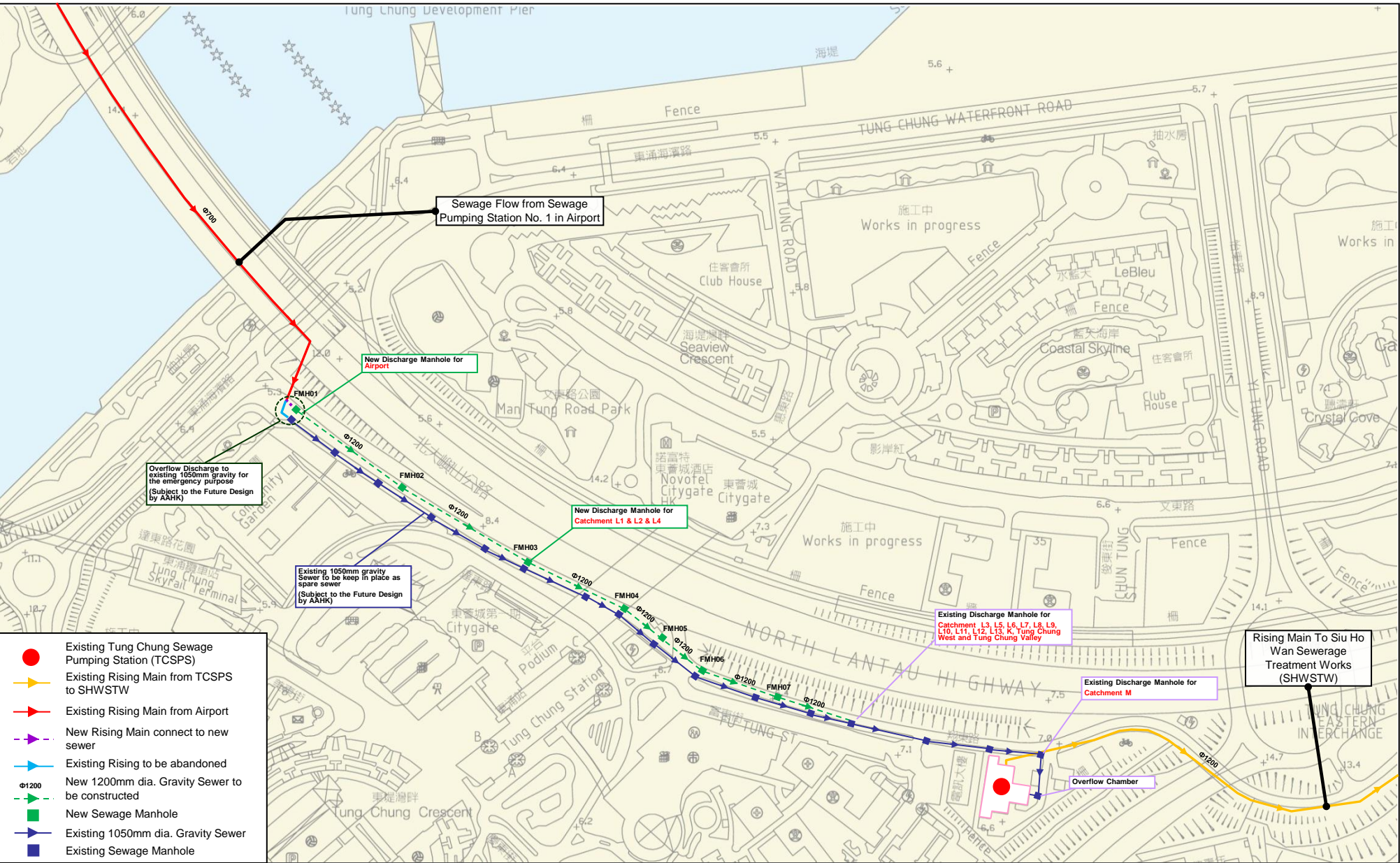


Project Title



Expansion of Hong Kong International Airport in to a Third-Runway System – Environmental Impact Assessment Report

Title

Hydraulic Model Results (Gravity Sewer with Mitigation Measure)- Year 2038



- Existing Tung Chung Sewage Pumping Station (TCSPS)
- Existing Rising Main from TCSPS to SHWSTW
- Existing Rising Main from Airport
- New Rising Main connect to new sewer
- Existing Rising to be abandoned
- New 1200mm dia. Gravity Sewer to be constructed
- New Sewage Manhole
- Existing 1050mm dia. Gravity Sewer
- Existing Sewage Manhole

	Project Title Expansion of Hong Kong International Airport in to a Third-Runway System – Environmental Impact Assessment Report	Drawing Title Proposed Mitigation Measure for Gravity Sewers from Airport Discharge Manhole to Tung Chung Sewage Pumping Station (TCSPS)	 Drawing No. Appendix 9.7 Revision 0