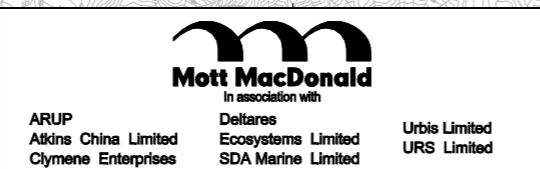


Copyright in this document and all proprietary rights in the information it contains belong to the AA. It is a condition of the supply of this document, in whatever form, that the recipient shall hold it in confidence and shall not duplicate or otherwise reproduce it in whole or in part, nor disclose its contents without the written consent of the AA.

Rev.	Date	Description	Checked
A	31MAY13	FIRST ISSUE	PK
B	21JUN13	GENERAL REVISION	PK
C	30SEP13	GENERAL REVISION	PK
D	15NOV13	GENERAL REVISION	PK



Title  
**HABITAT MAP – KEY PLAN**

Consultant's Signatures for Approval		Date
Design	PK	31MAY13
Checkers	PK	31MAY13
Design Supervisor	EC	21MAR14
Authorised Representative	AFK	21MAR14

EXPANSION OF HONG KONG INTERNATIONAL AIRPORT INTO A THREE-RUNWAY SYSTEM	
Drawing No.	MCL / P132 / EIA / 12-001
Scale at A3	1 : 65000
Rev.	D

828000 N

804000 E

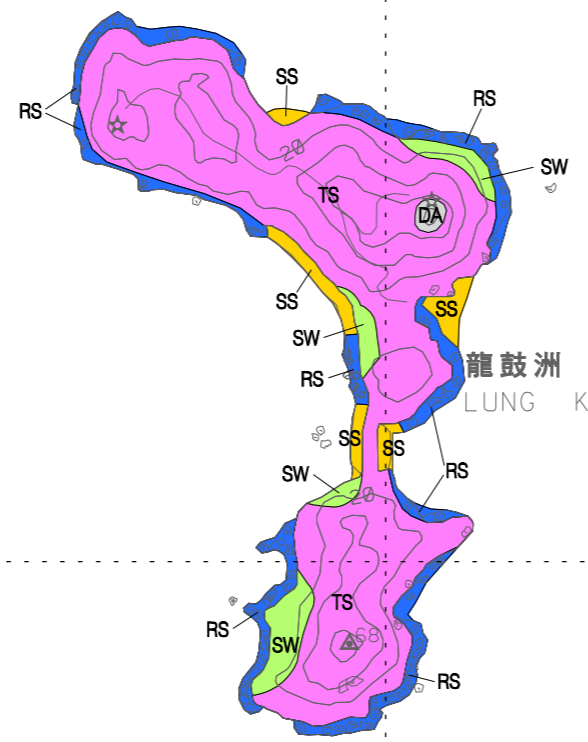
806000 E

808000 E

826000 N



- LEGEND:
- STUDY AREA FOR TERRESTRIAL ECOLOGY
  - SW SECONDARY WOODLAND
  - PW PLANTATION WOODLAND
  - TS TALL SHRUBLAND
  - SG SHRUBBY GRASSLAND
  - WG SEASONALLY WET GRASSLAND
  - CL CULTIVATED LAND
  - SR STREAM AND RIPARAIN
  - SM SALT MARSH
  - MF MUDFLAT
  - MG MANGROVE
  - SS SANDY SHORE
  - RS ROCKY SHORE
  - AS ARTIFICIAL SEAWALL
  - WL WASTELAND
  - DA DEVELOPED AREA



龍鼓洲 LUNG KWU CHAU

LOCATION D

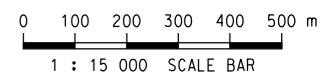
沙洲及龍鼓洲海岸公園

SHA CHAU AND LUNG KWU CHAU MARINE PARK

HKSAR BOUNDARY

白排 Bai Pai

踏石角 Top Shek Kok  
煤倉 Coal Depot



Copyright in this document and all proprietary rights in the information it contains belong to the AA. It is a condition of the supply of this document, in whatever form, that the recipient shall hold it in confidence and shall not duplicate or otherwise reproduce it in whole or in part, nor disclose its contents without the written consent of the AA.

Rev.	Date	Description	Checked
A	31MAY13	FIRST ISSUE	PK
B	21JUN13	GENERAL REVISION	PK
C	15NOV13	GENERAL REVISION	PK
D	16JAN14	GENERAL REVISION	PK



Title

HABITAT MAP - LUNG KWU CHAU

Consultant's Signatures for Approval		Date
Design	HY	31MAY13
Checkers	HY	31MAY13
Design Supervisor	EC	21MAR14
Authorised Representative	AFK	21MAR14

EXPANSION OF HONG KONG INTERNATIONAL AIRPORT INTO A THREE-RUNWAY SYSTEM	
Drawing No.	MCL / P132 / EIA / 12-002
Scale at A3	1 : 15000
Rev.	D

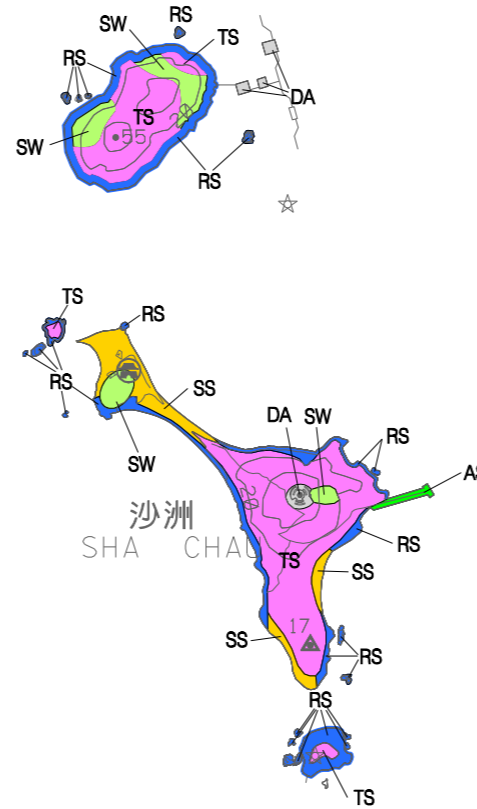


白排  
Bai Pai

# 沙洲及龍鼓洲海岸公園

SHA CHAU AND LUNG KWU CHAU MARINE PARK

白洲  
PAK CHAU



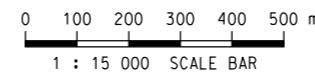
LEGEND:

	THIRD RUNWAY
	STUDY AREA FOR TERRESTRIAL ECOLOGY
	SECONDARY WOODLAND
	PLANTATION WOODLAND
	TALL SHRUBLAND
	SHRUBBY GRASSLAND
	SEASONALLY WET GRASSLAND
	CULTIVATED LAND
	STREAM AND RIPARAIN
	SALT MARSH
	MUDFLAT
	MANGROVE
	SANDY SHORE
	ROCKY SHORE
	ARTIFICIAL SEAWALL
	WASTELAND
	DEVELOPED AREA

HKSAR BOUNDARY

LOCATION D

LOCATION C



Copyright in this document and all proprietary rights in the information it contains belong to the AA. It is a condition of the supply of this document, in whatever form, that the recipient shall hold it in confidence and shall not duplicate or otherwise reproduce it in whole or in part, nor disclose its contents without the written consent of the AA.

Rev.	Date	Description	Checked
A	31MAY13	FIRST ISSUE	PK
B	21JUN13	GENERAL REVISION	PK
C	15NOV13	GENERAL REVISION	PK
D	16JAN14	GENERAL REVISION	PK



Title  
**HABITAT MAP – SHA CHAU**

Consultant's Signatures for Approval		Date
Design	HY	31MAY13
Checkers	HY	31MAY13
Design Supervisor	EC	21MAR14
Authorised Representative	AFK	21MAR14

EXPANSION OF HONG KONG INTERNATIONAL AIRPORT INTO A THREE-RUNWAY SYSTEM	
Drawing No.	Scale at A3
<b>MCL / P132 / EIA / 12-003</b>	<b>1 : 15000</b>
Rev.	D



HKSAR BOUNDARY

- LEGEND:**
- STUDY AREA FOR TERRESTRIAL ECOLOGY
  - SECONDARY WOODLAND
  - PLANTATION WOODLAND
  - TALL SHRUBLAND
  - SHRUBBY GRASSLAND
  - SEASONALLY WET GRASSLAND
  - CULTIVATED LAND
  - STREAM AND RIPARAIN
  - SALT MARSH
  - MUDFLAT
  - MANGROVE
  - SANDY SHORE
  - ROCKY SHORE
  - ARTIFICIAL SEAWALL
  - WASTELAND
  - DEVELOPED AREA

LOCATION A

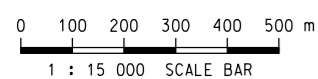
北大嶼郊野公園  
LANTAU NORTH COUNTRY PARK

814000 N

804000 E

806000 E

808000 E



Copyright in this document and all proprietary rights in the information it contains belong to the AA. It is a condition of the supply of this document, in whatever form, that the recipient shall hold it in confidence and shall not duplicate or otherwise reproduce it in whole or in part, nor disclose its contents without the written consent of the AA.

Rev.	Date	Description	Checked
A	31MAY13	FIRST ISSUE	PK
B	21JUN13	GENERAL REVISION	PK
C	30SEP13	GENERAL REVISION	PK
D	15NOV13	GENERAL REVISION	PK



Title  
**HABITAT MAP -  
SHAM WAT AND SAN SHEK WAN**

Consultant's Signatures for Approval		Date
Design	HY	31MAY13
Checkers	HY	31MAY13
Design Supervisor	EC	21MAR14
Authorised Representative	AFK	21MAR14

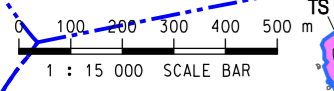
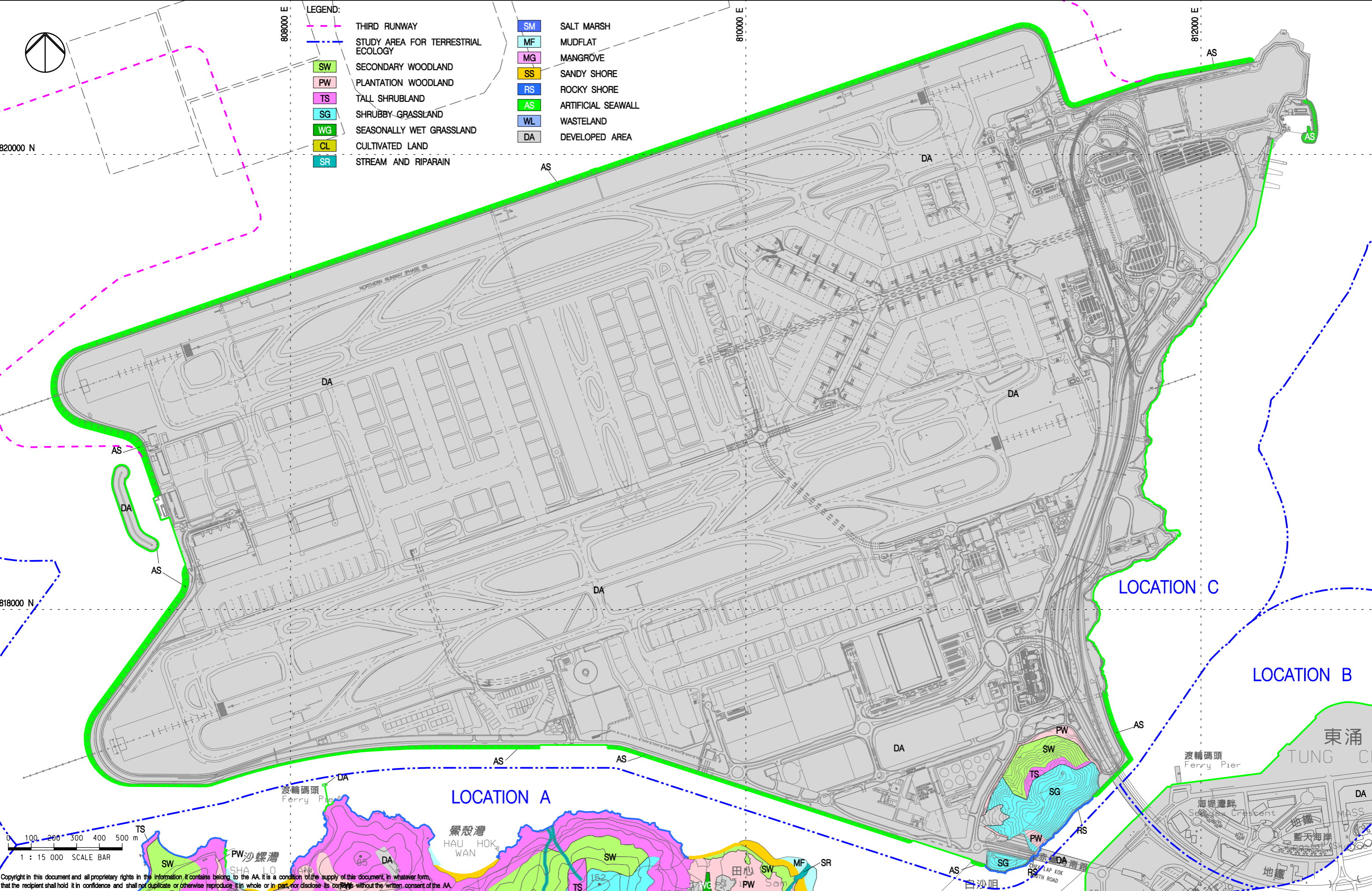
EXPANSION OF HONG KONG INTERNATIONAL AIRPORT INTO A THREE-RUNWAY SYSTEM		Scale at A3
Drawing No.	MCL / P132 / EIA / 12-004	1 : 15000
Rev.	D	



LEGEND:

- THIRD RUNWAY
- STUDY AREA FOR TERRESTRIAL ECOLOGY
- SECONDARY WOODLAND
- PLANTATION WOODLAND
- TALL SHRUBLAND
- SHRUBBY GRASSLAND
- SEASONALLY WET GRASSLAND
- CULTIVATED LAND
- STREAM AND RIPARIN

- SALT MARSH
- MUDFLAT
- MANGROVE
- SANDY SHORE
- ROCKY SHORE
- ARTIFICIAL SEAWALL
- WASTELAND
- DEVELOPED AREA



Copyright in this document and all proprietary rights in the information it contains belong to the AA. It is a condition of the supply of this document, in whatever form, that the recipient shall hold it in confidence and shall not duplicate or otherwise reproduce it in whole or in part, nor disclose its contents without the written consent of the AA.

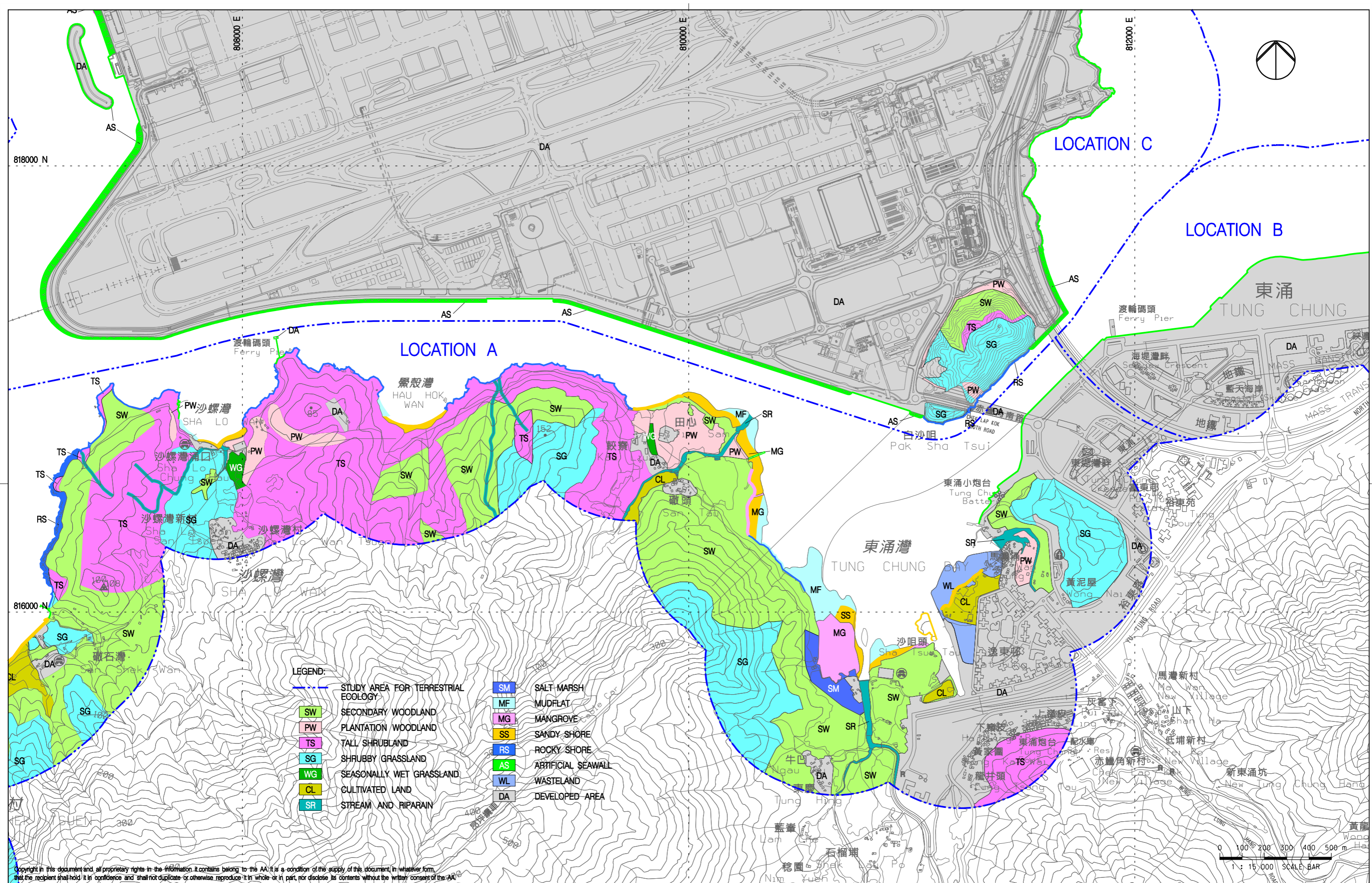
Rev.	Date	Description	Checked
A	31MAY13	FIRST ISSUE	PK
B	21JUN13	GENERAL REVISION	PK
C	24JUL13	GENERAL REVISION	PK
D	30SEP13	GENERAL REVISION	PK
E	15NOV13	GENERAL REVISION	PK



Title  
**HABITAT MAP - AIRPORT ISLAND**

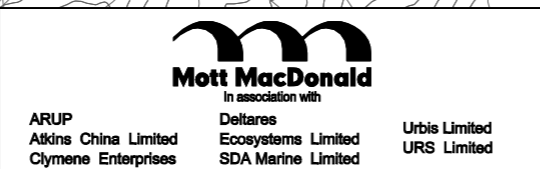
Consultant's Signatures for Approval		Date
Design	HY	31MAY13
Checkers	HY	31MAY13
Design Supervisor	EC	21MAR14
Authorised Representative	AFK	21MAR14

EXPANSION OF HONG KONG INTERNATIONAL AIRPORT INTO A THREE-RUNWAY SYSTEM		Scale at A3
Drawing No.	MCL / P132 / EIA / 12-005	1 : 15000
Rev.	E	



Copyright in this document and all proprietary rights in the information it contains belong to the AA. It is a condition of the supply of this document, in whatever form, that the recipient shall hold it in confidence and shall not duplicate or otherwise reproduce it in whole or in part, nor disclose its contents without the written consent of the AA.

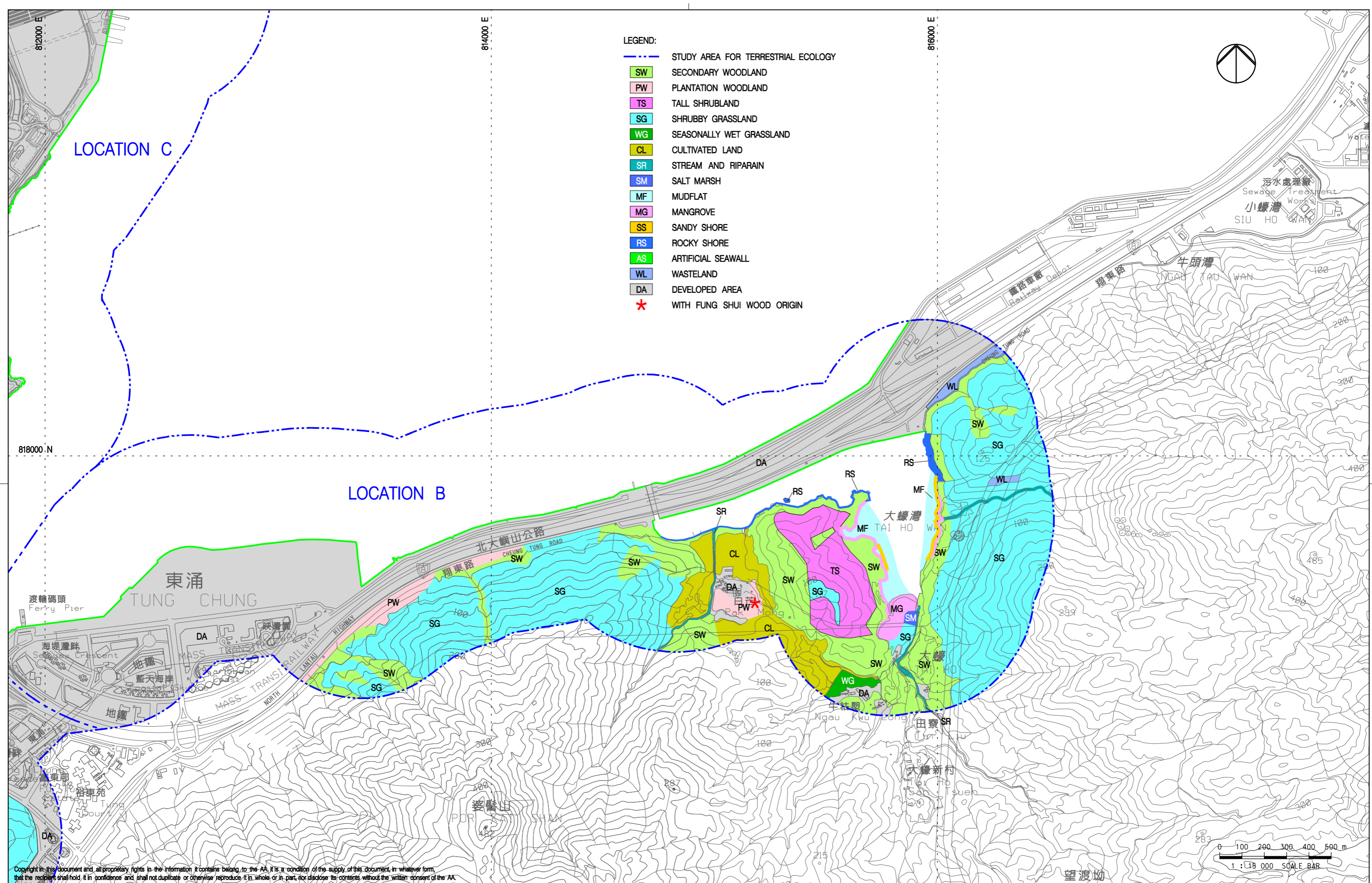
Rev.	Date	Description	Checked
A	31MAY13	FIRST ISSUE	PK
B	21JUN13	GENERAL REVISION	PK
C	24JUL13	GENERAL REVISION	PK
D	30SEP13	GENERAL REVISION	PK
E	15NOV13	GENERAL REVISION	PK



Title  
**HABITAT MAP -  
SHA LO WAN, HAU HOK WAN, SAN TAU  
AND TUNG CHUNG**

Consultant's Signatures for Approval		Date
Design	HY	31MAY13
Checkers	HY	31MAY13
Design Supervisor	EC	21MAR14
Authorised Representative	AFK	21MAR14

EXPANSION OF HONG KONG INTERNATIONAL AIRPORT INTO A THREE-RUNWAY SYSTEM  
Drawing No. **MCL / P132 / EIA / 12-006**  
Scale at A3 **1 : 15000**  
Rev. **E**



- LEGEND:**
- STUDY AREA FOR TERRESTRIAL ECOLOGY
  - SW SECONDARY WOODLAND
  - PW PLANTATION WOODLAND
  - TS TALL SHRUBLAND
  - SG SHRUBBY GRASSLAND
  - WG SEASONALLY WET GRASSLAND
  - CL CULTIVATED LAND
  - SR STREAM AND RIPARAIN
  - SM SALT MARSH
  - MF MUDFLAT
  - MG MANGROVE
  - SS SANDY SHORE
  - RS ROCKY SHORE
  - AS ARTIFICIAL SEAWALL
  - WL WASTELAND
  - DA DEVELOPED AREA
  - ★ WITH FUNG SHUI WOOD ORIGIN

Copyright in this document and all proprietary rights in the information it contains belong to the AA. It is a condition of the supply of this document in whatever form, that the recipient shall hold it in confidence and shall not duplicate or otherwise reproduce it in whole or in part, nor disclose its contents without the written consent of the AA.

Rev.	Date	Description	Checked
A	31MAY13	FIRST ISSUE	PK
B	28JUN13	GENERAL REVISION	PK
C	30SEP13	GENERAL REVISION	PK
D	08NOV13	GENERAL REVISION	PK
E	12MAR14	GENERAL REVISION	PK



Title  
**HABITAT MAP – PAK MONG AND TAI HO**

Consultant's Signatures for Approval		Date
Design	HY	31MAY13
Checkers	HY	31MAY13
Design Supervisor	EC	21MAR14
Authorised Representative	AFK	21MAR14

EXPANSION OF HONG KONG INTERNATIONAL AIRPORT INTO A THREE-RUNWAY SYSTEM		Scale at A3
Drawing No.	MCL / P132 / EIA / 12-007	1 : 15000
Rev.	E	