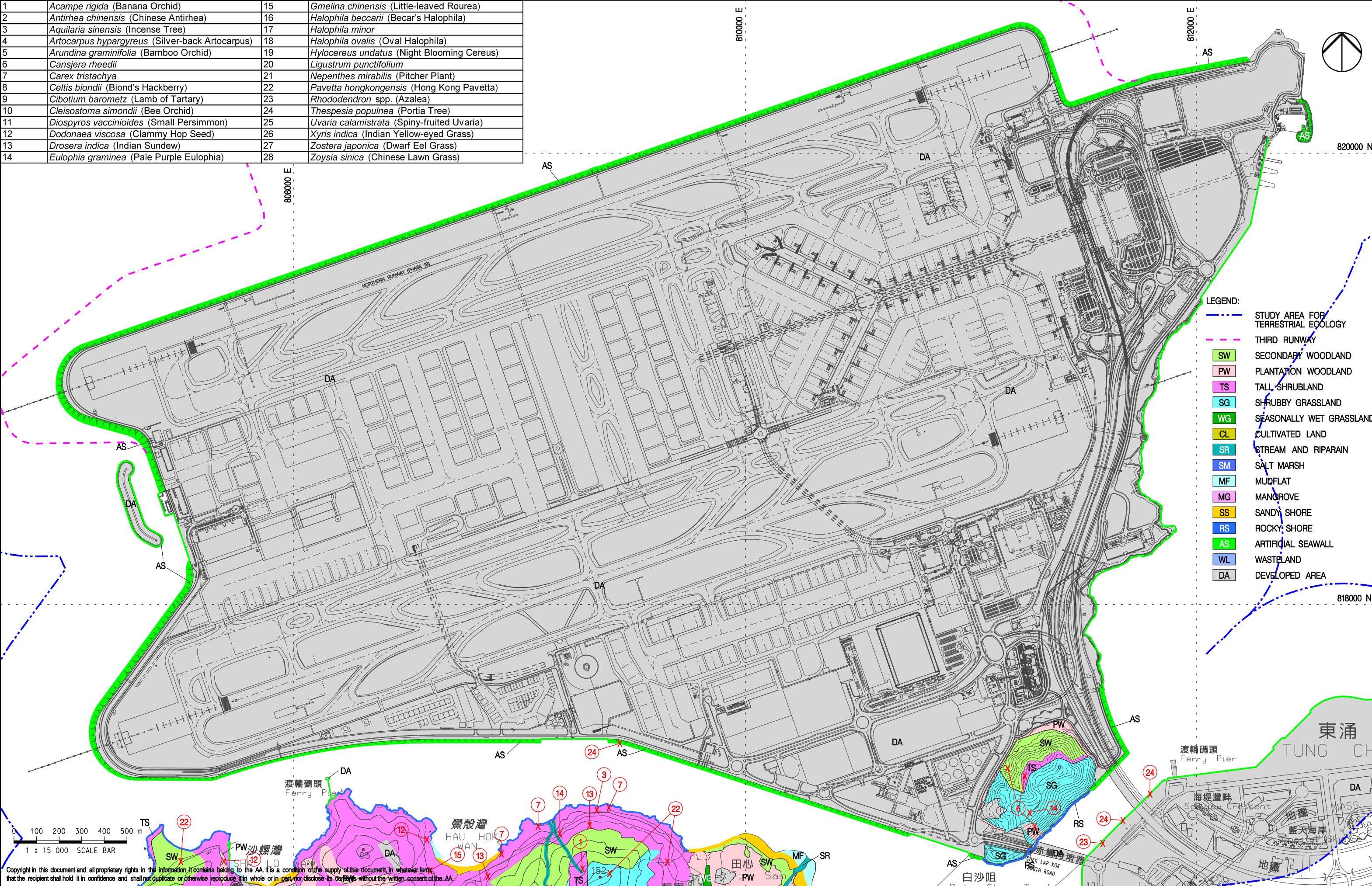


1	<i>Acampe rigida</i> (Banana Orchid)	15	<i>Gmelina chinensis</i> (Little-leaved Rourea)
2	<i>Antirhea chinensis</i> (Chinese Antirhea)	16	<i>Halophila beccarii</i> (Becar's Halophila)
3	<i>Aquilaria sinensis</i> (Incense Tree)	17	<i>Halophila minor</i>
4	<i>Artocarpus hypargyreus</i> (Silver-back Artocarpus)	18	<i>Halophila ovalis</i> (Oval Halophila)
5	<i>Arundina graminifolia</i> (Bamboo Orchid)	19	<i>Hylocereus undatus</i> (Night Blooming Cereus)
6	<i>Cansjera rheedii</i>	20	<i>Ligustrum punctifolium</i>
7	<i>Carex tristachya</i>	21	<i>Nepenthes mirabilis</i> (Pitcher Plant)
8	<i>Celtis biondii</i> (Biond's Hackberry)	22	<i>Pavetta hongkongensis</i> (Hong Kong Pavetta)
9	<i>Cibotium barometz</i> (Lamb of Tartary)	23	<i>Rhododendron</i> spp. (Azalea)
10	<i>Cleisostoma simondii</i> (Bee Orchid)	24	<i>Thespesia populnea</i> (Portia Tree)
11	<i>Diospyros vaccinioides</i> (Small Persimmon)	25	<i>Uvaria calamistrata</i> (Spiny-fruited Uvaria)
12	<i>Dodonaea viscosa</i> (Clammy Hop Seed)	26	<i>Xyris indica</i> (Indian Yellow-eyed Grass)
13	<i>Drosera indica</i> (Indian Sundew)	27	<i>Zostera japonica</i> (Dwarf Eel Grass)
14	<i>Eulophia graminea</i> (Pale Purple Eulophia)	28	<i>Zoysia sinica</i> (Chinese Lawn Grass)



Copyright in this document and all proprietary rights in the information it contains belong to the AA. It is a condition of the supply of this document, in whatever form, that the recipient shall hold it in confidence and shall not duplicate or otherwise reproduce it in whole or in part, nor disclose its contents without the written consent of the AA.

Rev.	Date	Description	Checked
A	17JAN14	FIRST ISSUE	PK





Mott MacDonald
In association with

ARUP
Atkins China Limited
Clymene Enterprises

Deltarec
Ecosystems Limited
SDA Marine Limited

Urbis Limited
URS Limited

Title

FLORAL SPECIES OF CONSERVATION INTEREST AIRPORT ISLAND

Consultant's Signatures for Approval		Date
Design	HY	17JAN14
Checkers	HY	17JAN14
Design Supervisor	EC	21MAR14
Authorised Representative	AFK	21MAR14

EXPANSION OF HONG KONG INTERNATIONAL AIRPORT INTO A THREE-RUNWAY SYSTEM	
Drawing No.	Scale at A3 1 : 15000
MCL / P132 / EIA / 12-020	
Rev.	A