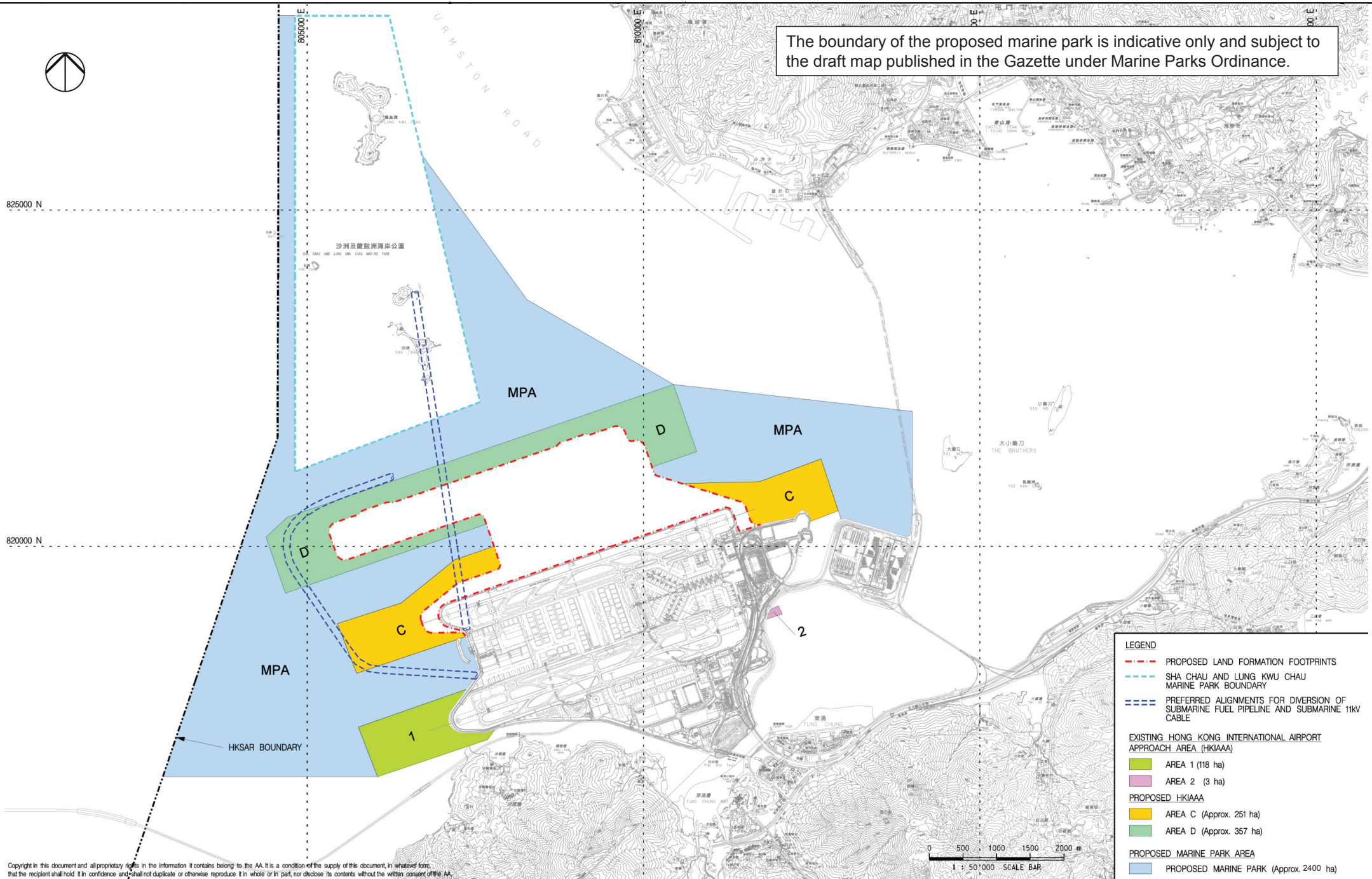


The boundary of the proposed marine park is indicative only and subject to the draft map published in the Gazette under Marine Parks Ordinance.



- LEGEND**
- PROPOSED LAND FORMATION FOOTPRINTS
 - SHA CHAU AND LUNG KWU CHAU MARINE PARK BOUNDARY
 - PREFERRED ALIGNMENTS FOR DIVERSION OF SUBMARINE FUEL PIPELINE AND SUBMARINE 11kV CABLE
- EXISTING HONG KONG INTERNATIONAL AIRPORT APPROACH AREA (HKIAAA)**
- AREA 1 (118 ha)
 - AREA 2 (3 ha)
- PROPOSED HKIAAA**
- AREA C (Approx. 251 ha)
 - AREA D (Approx. 357 ha)
- PROPOSED MARINE PARK AREA**
- PROPOSED MARINE PARK (Approx. 2400 ha)

Copyright in this document and all proprietary rights in the information it contains belong to the AA. It is a condition of the supply of this document, in whatever form, that the recipient shall hold it in confidence and shall not duplicate or otherwise reproduce it in whole or in part, nor disclose its contents without the written consent of the AA.

Rev.	Date	Description	Checked
A	9OCT13	FIRST ISSUE	JC



ARUP Atkins China Limited
Cymene Enterprises

Mott MacDonald
In association with
Deltarac Ecosystems Limited
SDA Marine Limited

Urbis Limited
URS Scott Wilson Limited

Title
PROPOSED MARINE PARK AREA

Consultant's Signatures for Approval		Date
Design	JC	9OCT13
Checkers	JC	9OCT13
Design Supervisor	EC	21MAR14
Authorised Representative	AFK	21MAR14

EXPANSION OF HONG KONG INTERNATIONAL AIRPORT INTO A THREE-RUNWAY SYSTEM		Scale at A3
Drawing No.	MCL/P132/EIA/14-010	1:50000
Rev.	A	