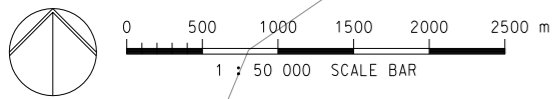
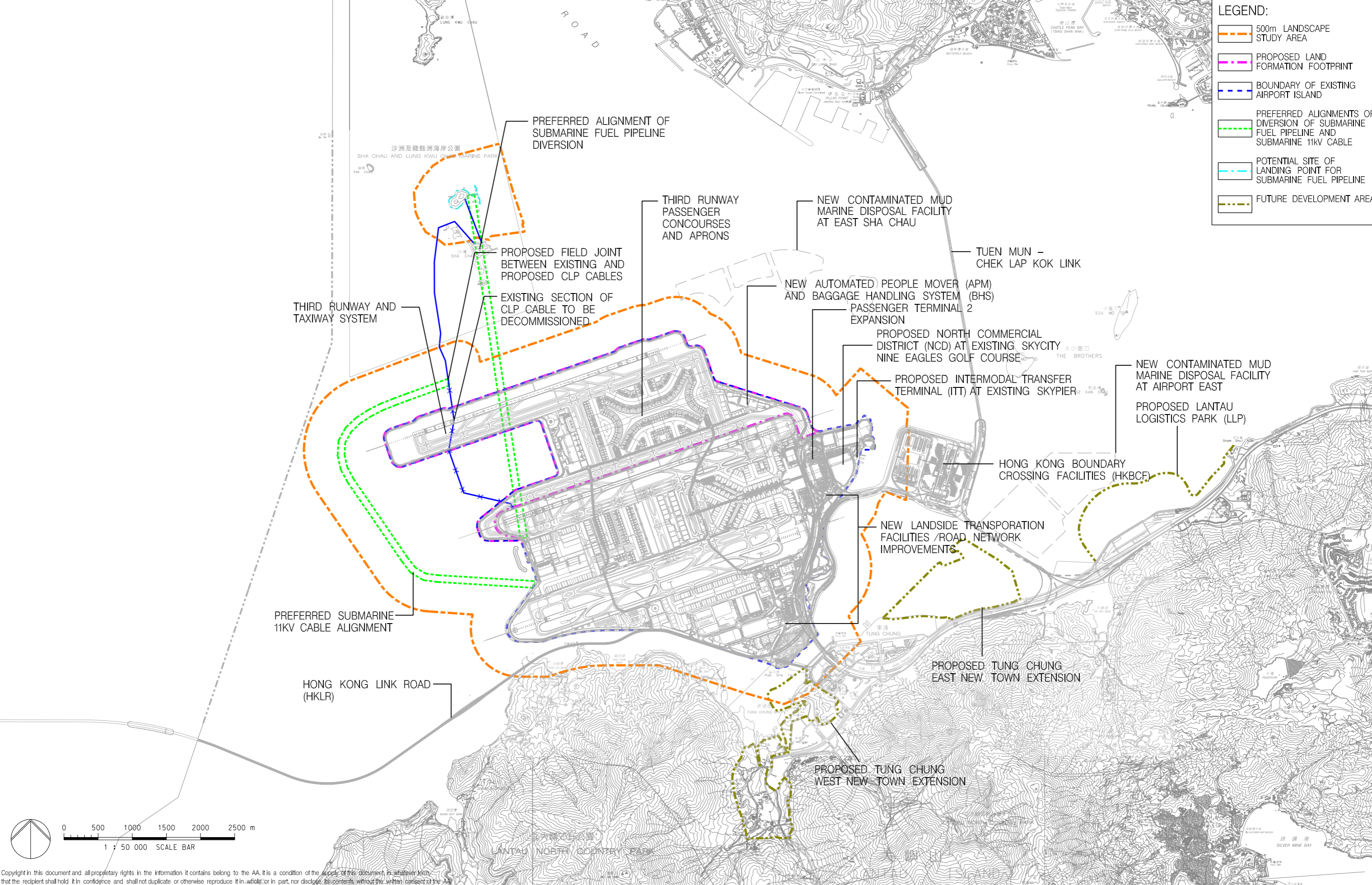


LEGEND:

- 500m LANDSCAPE STUDY AREA
- PROPOSED LAND FORMATION FOOTPRINT
- BOUNDARY OF EXISTING AIRPORT ISLAND
- PREFERRED ALIGNMENTS OF DIVERSION OF SUBMARINE FUEL PIPELINE AND SUBMARINE 11KV CABLE
- POTENTIAL SITE OF LANDING POINT FOR SUBMARINE FUEL PIPELINE
- FUTURE DEVELOPMENT AREA



Copyright in this document and all proprietary rights in the information it contains belong to the AA. It is a condition of the supply of this document, in whatever form, that the recipient shall hold it in confidence and shall not duplicate or otherwise reproduce it in whole or in part, nor disclose its contents without the written consent of the AA.

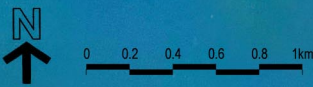
Rev.	Date	Description	Checked
D	11SEP13	GENERAL REVISION	AD
E	31OCT13	GENERAL REVISION	AD
F	17JAN14	GENERAL REVISION	AD
G	06FEB14	GENERAL REVISION	AD
H	24MAR14	GENERAL REVISION	AD









Title
LANDSCAPE STUDY AREA

Consultant's Signatures for Approval		Date
Design	PL	24MAR14
Checkers	TL	24MAR14
Design Supervisor		
Authorised Representative	AD	24MAR14

EXPANSION OF HONG KONG INTERNATIONAL AIRPORT INTO A THREE-RUNWAY SYSTEM	
Drawing No.	Scale at A3 50000
MCL / P132 / EIA / 15-001.1	Rev. H



LEGEND:

-  500m LANDSCAPE STUDY AREA
-  PROPOSED LAND FORMATION FOOTPRINT
-  BOUNDARY OF EXISTING AIRPORT ISLAND
-  PREFERRED ALIGNMENTS OF DIVERSION OF SUBMARINE FUEL PIPELINE AND SUBMARINE 11kV CABLE
-  POTENTIAL SITE OF LANDING POINT FOR SUBMARINE FUEL PIPELINE
-  FUTURE DEVELOPMENT AREA



Rev.	Date	Description	Checked
-	31OCT13	FIRSST ISSUE	AD
A	07FEB14	GENERAL REVISION	AD
B	24MAR14	GENERAL REVISION	AD



Mott MacDonald
In association with

ARUP
Atkins China Limited
Clymene Enterprises

Deltares
Ecosystems Limited
SDA Marine Limited

Urbis Limited
URS Scott Wilson Limited

Title
LANDSCAPE STUDY AREA

Consultant's Signatures for Approval		Date
Design	LW	24MAR14
Checkers	TL	24MAR14
Design Supervisor		
Authorised Representative	AD	24MAR14

EXPANSION OF HONG KONG INTERNATIONAL AIRPORT INTO A THREE-RUNWAY SYSTEM		Scale at A3 1 : 35,000
Drawing No. MCL/P132/EIA/15-001.2	Rev. B	