

- POTENTIAL MITIGATION MEASURES CONSTRUCTION PHASE:**
- CM1 (L+V) - WORKS AREA MINIMISED
 - CM2 (V) - CONSTRUCTION PERIOD REDUCED TO PRACTICAL MINIMUM
 - CM3 (V) - PHASING OF THE CONSTRUCTION STAGE
 - CM4 (V) - CONSTRUCTION TRAFFIC (LAND AND SEA) REDUCED TO PRACTICAL MINIMUM
 - CM5 (V) - ERECTION OF DECORATIVE MESH SCREENS OR CONSTRUCTION HOARDINGS
 - CM6 (V) - AVOIDANCE OF EXCESSIVE HEIGHT AND BULK OF SITE BUILDINGS AND STRUCTURES
 - CM7 (V) - CONTROL OF NIGHT-TIME LIGHTING
 - CM8 (L) - PROTECT EXISTING TREES
 - CM9 (L) - TREES AFFECTED BY THE WORKS SHALL BE TRANSPLANTED
 - CM10 (L+V) - ADVANCED HYDROSEEDING AROUND TAXIWAYS AND RUNWAYS

- POTENTIAL MITIGATION MEASURES OPERATIONAL PHASE:**
- OM1 (V) - SENSITIVE LANDSCAPE DESIGN OF RECLAMATION EDGE
 - OM2 (V) - ALL ABOVE GROUND STRUCTURES SHALL BE SENSITIVELY DESIGNED
 - OM3 (V) - SENSITIVE DESIGN OF BUILDINGS AND STRUCTURES IN TERMS OF SCALE, HEIGHT AND BULK (VISUAL WEIGHT)
 - OM4 (V) - USE APPROPRIATE BUILDING MATERIALS AND COLOURS IN BUILT STRUCTURES
 - OM5 (V) - LIGHTING UNITS TO BE DIRECTIONAL AND MINIMISE UNNECESSARY LIGHT SPILL AND GLARE
 - OM6 (L+V) - GREENING MEASURES IMPLEMENTED
 - OM7 (L+V) - COMPENSATORY TREE PLANTING FOR ALL FELLED TREES
 - OM8 (L+V) - STREETScape SHALL BE SENSITIVELY DESIGNED
 - OM9 (L+V) - ALL STREETScape AREAS AND HARD AND SOFT LANDSCAPE AREAS DISTURBED DURING CONSTRUCTION SHALL BE REINSTATED
 - OM10 (V) - AESTHETIC IMPROVEMENT PLANTING OF VIADUCT STRUCTURE THROUGH GREENING OF STRUCTURE WHERE FEASIBLE
 - OM11 (V) - SENSITIVE DESIGN OF FOOTBRIDGES, NOISE BARRIERS AND ENCLOSURES WITH GREENING (SCREEN PLANTING/CLIMBERS/PLANTERS) AND CHROMATIC MEASURES

LEGEND:

- CM10, OM6
- OM2, OM3, OM4, OM6
- OM6, OM8, OM9
- OM6, OM10
- OM1, OM6

NOTE:
COLOURED MITIGATION MEASURES ARE LOCATION SPECIFIC NON-COLOURED MITIGATION MEASURES CAN BE APPLIED THROUGHOUT THE PROJECT SITE BOUNDARY
L = LANDSCAPE MITIGATION MEASURE
V = VISUAL MITIGATION MEASURE



BLOW UP PLAN, REFER MCL/P132/EIA/15-028.4

BLOW UP PLAN, REFER MCL/P132/EIA/15-028.2

BLOW UP PLAN, REFER MCL/P132/EIA/15-028.5

BLOW UP PLAN, REFER MCL/P132/EIA/15-028.3

Rev.	Date	Description	Checked
-	21JAN14	FIRST ISSUE	AD
A	11FEB14	GENERAL REVISION	AD
B	13MAR14	GENERAL REVISION	AD
C	24MAR14	GENERAL REVISION	AD



Mott MacDonald
In association with

ARUP
Atkins China Limited
Clymene Enterprises

Deltares
Ecosystems Limited
SDA Marine Limited

Urbis Limited
URS Limited

Title
LANDSCAPE AND VISUAL MITIGATION ARRANGEMENT PLAN - CHEK LAP KOK

Consultant's Signatures for Approval		Date
Design	PL	24MAR14
Checkers	TL	24MAR14
Design Supervisor		
Authorised Representative	AD	24MAR14

EXPANSION OF HONG KONG INTERNATIONAL AIRPORT INTO A THREE-RUNWAY SYSTEM	
Drawing No.	MCL / P132 / EIA / 15-028.1
Scale at A3	25000
Rev.	C

POTENTIAL MITIGATION MEASURES CONSTRUCTION PHASE:
 CM1 (L+V) - WORKS AREA MINIMISED
 CM2 (V) - CONSTRUCTION PERIOD REDUCED TO PRACTICAL MINIMUM
 CM3 (V) - PHASING OF THE CONSTRUCTION STAGE
 CM4 (V) - CONSTRUCTION TRAFFIC (LAND AND SEA) REDUCED TO PRACTICAL MINIMUM
 CM5 (V) - ERECTION OF DECORATIVE MESH SCREENS OR CONSTRUCTION HOARDINGS
 CM6 (V) - AVOIDANCE OF EXCESSIVE HEIGHT AND BULK OF SITE BUILDINGS AND STRUCTURES
 CM7 (V) - CONTROL OF NIGHT-TIME LIGHTING
 CM8 (L) - PROTECT EXISTING TREES
 CM9 (L) - TREES AFFECTED BY THE WORKS SHALL BE TRANSPLANTED
 CM10 (L+V) - ADVANCED HYDROSEEDING AROUND TAXIWAYS AND RUNWAYS

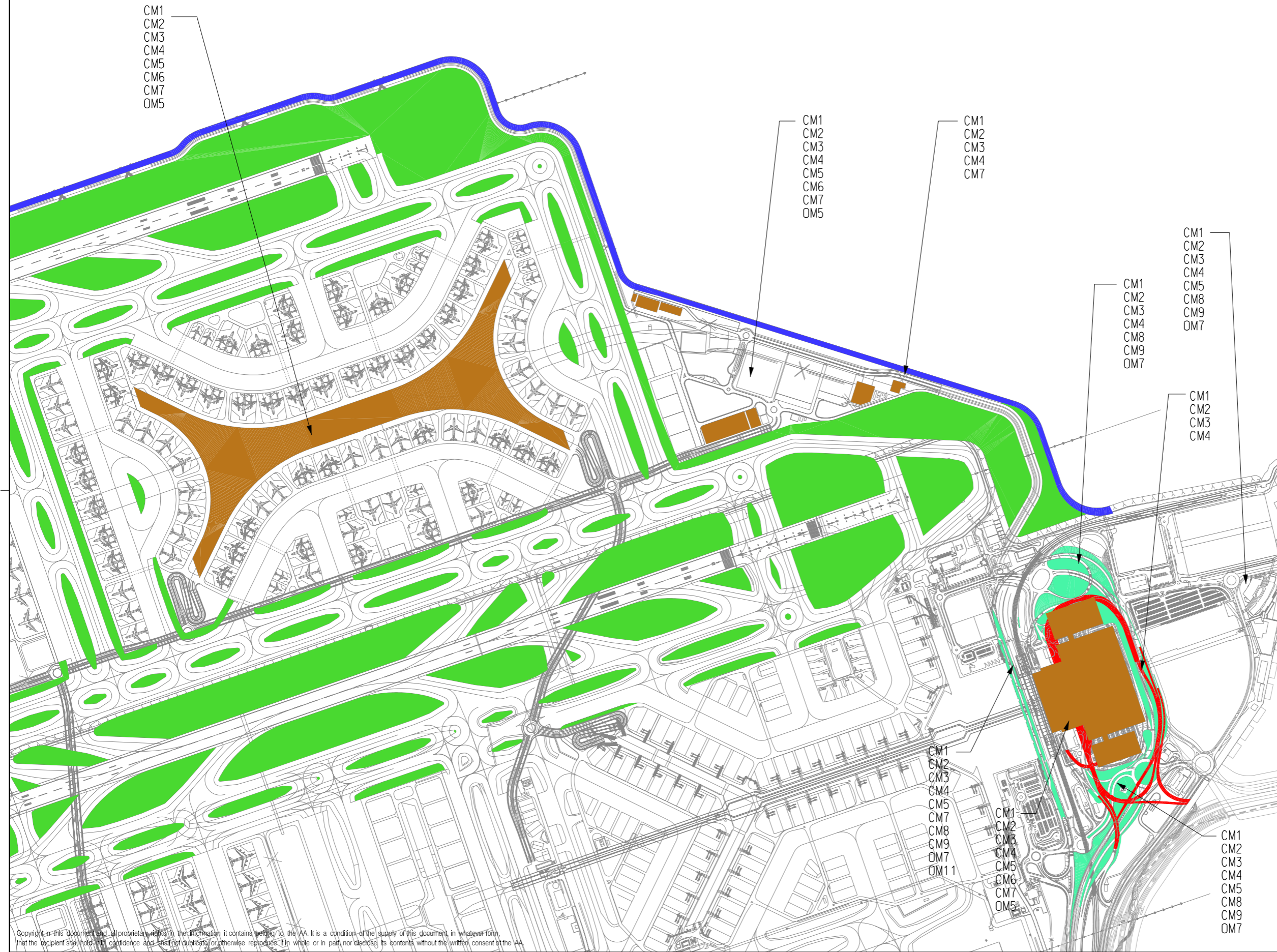
POTENTIAL MITIGATION MEASURES OPERATIONAL PHASE:
 OM1 (V) - SENSITIVE LANDSCAPE DESIGN OF RECLAMATION EDGE
 OM2 (V) - ALL ABOVE GROUND STRUCTURES SHALL BE SENSITIVELY DESIGNED
 OM3 (V) - SENSITIVE DESIGN OF BUILDINGS AND STRUCTURES IN TERMS OF SCALE, HEIGHT AND BULK (VISUAL WEIGHT)
 OM4 (V) - USE APPROPRIATE BUILDING MATERIALS AND COLOURS IN BUILT STRUCTURES
 OM5 (V) - LIGHTING UNITS TO BE DIRECTIONAL AND MINIMISE UNNECESSARY LIGHT SPILL AND GLARE
 OM6 (L+V) - GREENING MEASURES IMPLEMENTED
 OM7 (L+V) - COMPENSATORY TREE PLANTING FOR ALL FELLED TREES
 OM8 (L+V) - STREETSCAPE SHALL BE SENSITIVELY DESIGNED
 OM9 (L+V) - ALL STREETSCAPE AREAS AND HARD AND SOFT LANDSCAPE AREAS DISTURBED DURING CONSTRUCTION SHALL BE REINSTATED
 OM10 (V) - AESTHETIC IMPROVEMENT PLANTING OF VIADUCT STRUCTURE THROUGH GREENING OF STRUCTURE WHERE FEASIBLE
 OM11 (V) - SENSITIVE DESIGN OF FOOTBRIDGES, NOISE BARRIERS AND ENCLOSURES WITH GREENING (SCREEN PLANTING/CLIMBERS/PLANTERS) AND CHROMATIC MEASURES

LEGEND:

- CM10, OM6
- OM2, OM3, OM4, OM6
- OM6, OM8, OM9
- OM6, OM10
- OM1, OM6



NOTE:
 COLOURED MITIGATION MEASURES ARE LOCATION SPECIFIC
 NON-COLOURED MITIGATION MEASURES CAN BE APPLIED THROUGHOUT THE PROJECT SITE BOUNDARY
 L = LANDSCAPE MITIGATION MEASURE
 V = VISUAL MITIGATION MEASURE



Copyright in this document and all proprietary rights in the information it contains belong to the AA. It is a condition of the supply of this document, in whatever form, that the recipient shall hold it in confidence and shall not duplicate or otherwise reproduce it in whole or in part, nor disclose its contents without the written consent of the AA.

Rev.	Date	Description	Checked
-	21JAN14	FIRST ISSUE	AD
A	11FEB14	GENERAL REVISION	AD
B	13MAR14	GENERAL REVISION	AD
C	24MAR14	GENERAL REVISION	AD



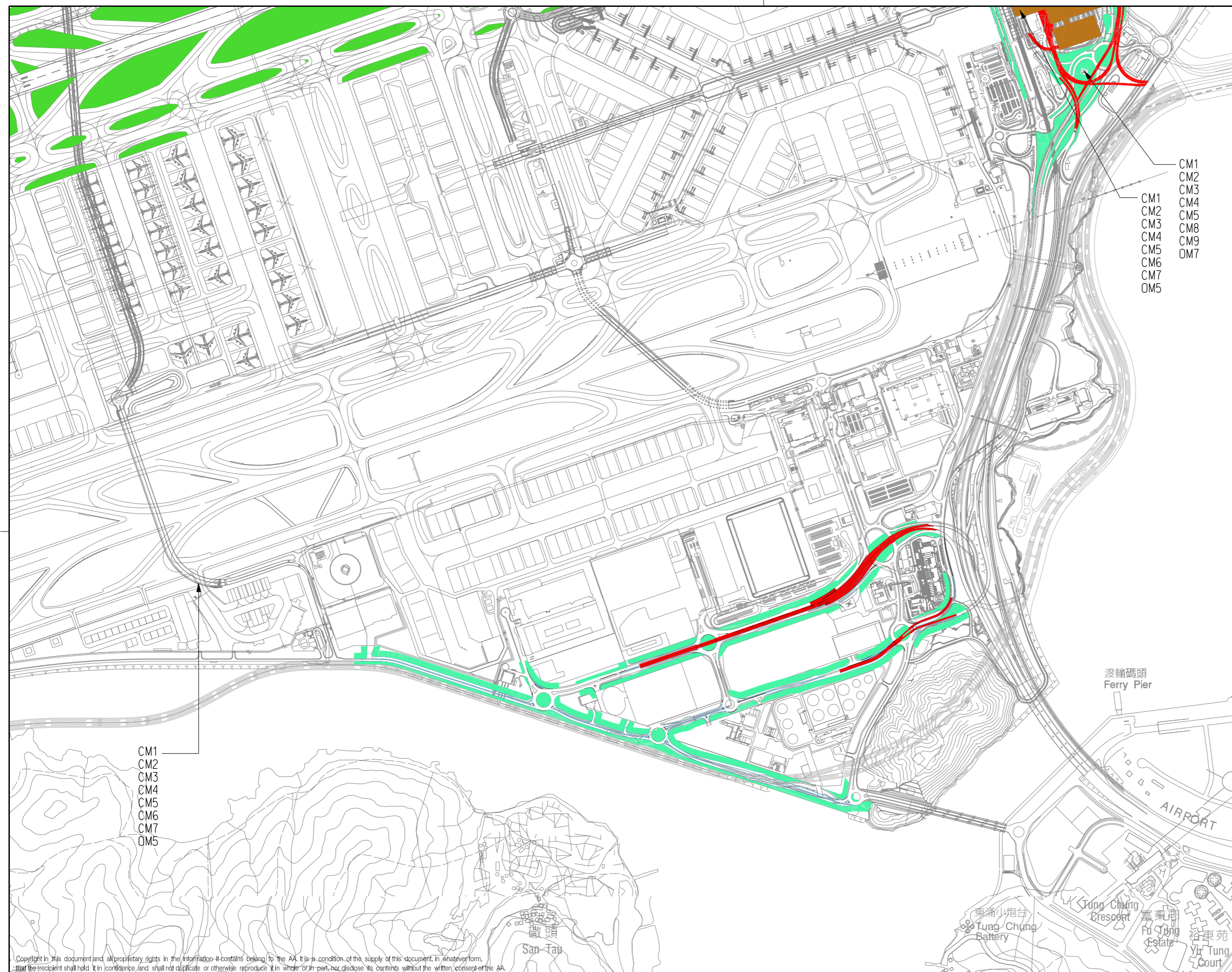
Mott MacDonald
In association with

ARUP Deltares Urbis Limited
 Atkins China Limited Ecosystems Limited SDA Marine Limited URS Limited
 Clymene Enterprises

Title
LANDSCAPE AND VISUAL MITIGATION ARRANGEMENT BLOW-UP PLAN - CHEK LAP KOK

Consultant's Signatures for Approval		Date
Design	PL	24MAR14
Checkers	TL	24MAR14
Design Supervisor		
Authorised Representative	AD	24MAR14

EXPANSION OF HONG KONG INTERNATIONAL AIRPORT INTO A THREE-RUNWAY SYSTEM	
Drawing No.	MCL / P132 / EIA / 15-028.2
Scale at A3	12500
Rev.	C

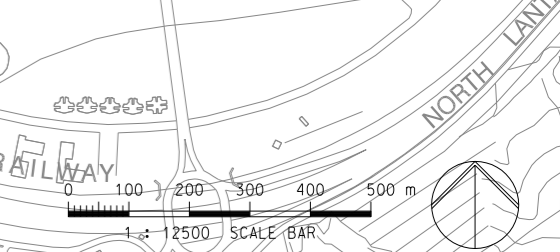


- POTENTIAL MITIGATION MEASURES**
CONSTRUCTION PHASE:
 CM1 (L+V) - WORKS AREA MINIMISED
 CM2 (V) - CONSTRUCTION PERIOD REDUCED TO PRACTICAL MINIMUM
 CM3 (V) - PHASING OF THE CONSTRUCTION STAGE
 CM4 (V) - CONSTRUCTION TRAFFIC (LAND AND SEA) REDUCED TO PRACTICAL MINIMUM
 CM5 (V) - ERECTION OF DECORATIVE MESH SCREENS OR CONSTRUCTION HOARDINGS
 CM6 (V) - AVOIDANCE OF EXCESSIVE HEIGHT AND BULK OF SITE BUILDINGS AND STRUCTURES
 CM7 (V) - CONTROL OF NIGHT-TIME LIGHTING
 CM8 (L) - PROTECT EXISTING TREES
 CM9 (L) - TREES AFFECTED BY THE WORKS SHALL BE TRANSPLANTED
 CM10 (L+V) - ADVANCED HYDROSEEDING AROUND TAXIWAYS AND RUNWAYS

- POTENTIAL MITIGATION MEASURES**
OPERATIONAL PHASE:
 OM1 (V) - SENSITIVE LANDSCAPE DESIGN OF RECLAMATION EDGE
 OM2 (V) - ALL ABOVE GROUND STRUCTURES SHALL BE SENSITIVELY DESIGNED
 OM3 (V) - SENSITIVE DESIGN OF BUILDINGS AND STRUCTURES IN TERMS OF SCALE, HEIGHT AND BULK (VISUAL WEIGHT)
 OM4 (V) - USE APPROPRIATE BUILDING MATERIALS AND COLOURS IN BUILT STRUCTURES
 OM5 (V) - LIGHTING UNITS TO BE DIRECTIONAL AND MINIMISE UNNECESSARY LIGHT SPILL AND GLARE
 OM6 (L+V) - GREENING MEASURES IMPLEMENTED
 OM7 (L+V) - COMPENSATORY TREE PLANTING FOR ALL FELLED TREES
 OM8 (L+V) - STREETSCAPE SHALL BE SENSITIVELY DESIGNED
 OM9 (L+V) - ALL STREETSCAPE AREAS AND HARD AND SOFT LANDSCAPE AREAS DISTURBED DURING CONSTRUCTION SHALL BE REINSTATED
 OM10 (V) - AESTHETIC IMPROVEMENT PLANTING OF VIADUCT STRUCTURE THROUGH GREENING OF STRUCTURE WHERE FEASIBLE
 OM11 (V) - SENSITIVE DESIGN OF FOOTBRIDGES, NOISE BARRIERS AND ENCLOSURES WITH GREENING (SCREEN PLANTING/CLIMBERS/PLANTERS) AND CHROMATIC MEASURES

LEGEND:

- CM10, OM6
- OM2, OM3, OM4, OM6
- OM6, OM8, OM9
- OM6, OM10
- OM1, OM6



NOTE:
 COLOURED MITIGATION MEASURES ARE LOCATION SPECIFIC NON-COLOURED MITIGATION MEASURES CAN BE APPLIED THROUGHOUT THE PROJECT SITE BOUNDARY
 L = LANDSCAPE MITIGATION MEASURE
 V = VISUAL MITIGATION MEASURE

CM1
 CM2
 CM3
 CM4
 CM5
 CM6
 CM7
 OM5

CM1
 CM2
 CM3
 CM4
 CM5
 CM6
 CM7
 OM5

Copyright in this document and all proprietary rights in the information it contains belong to the AA. It is a condition of the supply of this document, in whatever form, that the recipient shall hold it in confidence and shall not duplicate or otherwise reproduce it in whole or in part, nor disclose its contents without the written consent of the AA.

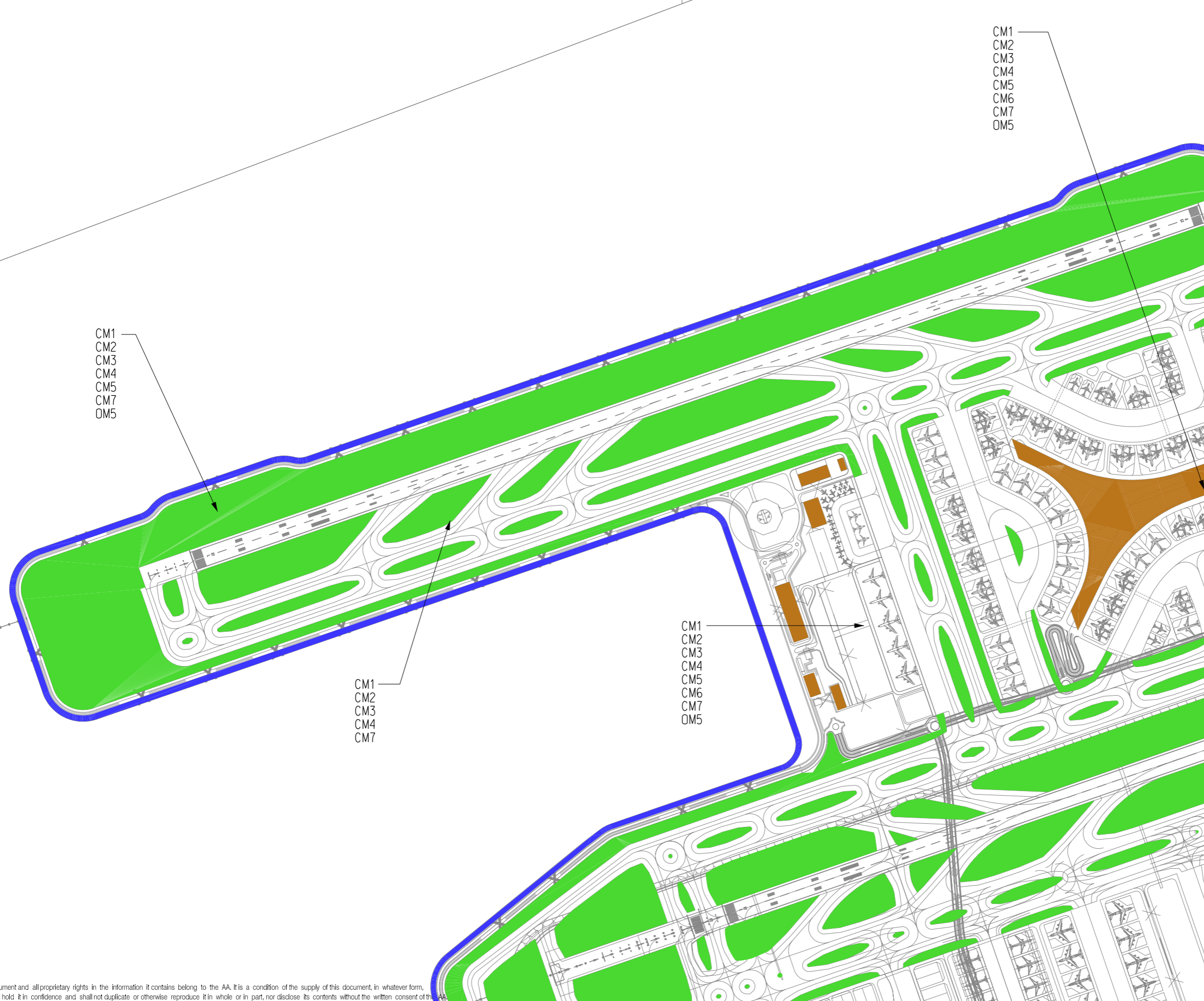
Rev.	Date	Description	Checked
-	21JAN14	FIRST ISSUE	AD
A	11FEB14	GENERAL REVISION	AD
B	13MAR14	GENERAL REVISION	AD
C	24MAR14	GENERAL REVISION	AD



Title
LANDSCAPE AND VISUAL MITIGATION ARRANGEMENT BLOW-UP PLAN - CHEK LAP KOK

Consultant's Signatures for Approval		Date
Design	PL	24MAR14
Checkers	TL	24MAR14
Design Supervisor		
Authorised Representative	AD	24MAR14

EXPANSION OF HONG KONG INTERNATIONAL AIRPORT INTO A THREE-RUNWAY SYSTEM	
Drawing No.	MCL / P132 / EIA / 15-028.3
Scale at A3	12500
Rev.	C



- POTENTIAL MITIGATION MEASURES
CONSTRUCTION PHASE:
- CM1 (L+V) - WORKS AREA MINIMISED
 - CM2 (V) - CONSTRUCTION PERIOD REDUCED TO PRACTICAL MINIMUM
 - CM3 (V) - PHASING OF THE CONSTRUCTION STAGE
 - CM4 (V) - CONSTRUCTION TRAFFIC (LAND AND SEA) REDUCED TO PRACTICAL MINIMUM
 - CM5 (V) - ERECTION OF DECORATIVE MESH SCREENS OR CONSTRUCTION HOARDINGS
 - CM6 (V) - AVOIDANCE OF EXCESSIVE HEIGHT AND BULK OF SITE BUILDINGS AND STRUCTURES
 - CM7 (V) - CONTROL OF NIGHT-TIME LIGHTING
 - CM8 (L) - PROTECT EXISTING TREES
 - CM9 (L) - TREES AFFECTED BY THE WORKS SHALL BE TRANSPLANTED
 - CM10 (L+V) - ADVANCED HYDROSEEDING AROUND TAXIWAYS AND RUNWAYS

- POTENTIAL MITIGATION MEASURES
OPERATIONAL PHASE:
- OM1 (V) - SENSITIVE LANDSCAPE DESIGN OF RECLAMATION EDGE
 - OM2 (V) - ALL ABOVE GROUND STRUCTURES SHALL BE SENSITIVELY DESIGNED
 - OM3 (V) - SENSITIVE DESIGN OF BUILDINGS AND STRUCTURES IN TERMS OF SCALE, HEIGHT AND BULK (VISUAL WEIGHT)
 - OM4 (V) - USE APPROPRIATE BUILDING MATERIALS AND COLOURS IN BUILT STRUCTURES
 - OM5 (V) - LIGHTING UNITS TO BE DIRECTIONAL AND MINIMISE UNNECESSARY LIGHT SPILL AND GLARE
 - OM6 (L+V) - GREENING MEASURES IMPLEMENTED
 - OM7 (L+V) - COMPENSATORY TREE PLANTING FOR ALL FELLED TREES
 - OM8 (L+V) - STREETScape SHALL BE SENSITIVELY DESIGNED
 - OM9 (L+V) - ALL STREETScape AREAS AND HARD AND SOFT LANDSCAPE AREAS DISTURBED DURING CONSTRUCTION SHALL BE REINSTATED
 - OM10 (V) - AESTHETIC IMPROVEMENT PLANTING OF VIADUCT STRUCTURE THROUGH GREENING OF STRUCTURE WHERE FEASIBLE
 - OM11 (V) - SENSITIVE DESIGN OF FOOTBRIDGES, NOISE BARRIERS AND ENCLOSURES WITH GREENING (SCREEN PLANTING/CLIMBERS/PLANTERS) AND CHROMATIC MEASURES

LEGEND:

- CM10, OM6
- OM2, OM3, OM4, OM6
- OM6, OM8, OM9
- OM6, OM10
- OM1, OM6



NOTE:
COLOURED MITIGATION MEASURES ARE LOCATION SPECIFIC. NON-COLOURED MITIGATION MEASURES CAN BE APPLIED THROUGHOUT THE PROJECT SITE BOUNDARY.
L = LANDSCAPE MITIGATION MEASURE
V = VISUAL MITIGATION MEASURE

Copyright in this document and all proprietary rights in the information it contains belong to the AA. It is a condition of the supply of this document, in whatever form, that the recipient shall hold it in confidence and shall not duplicate or otherwise reproduce it in whole or in part, nor disclose its contents without the written consent of the AA.

Rev.	Date	Description	Checked
-	21JAN14	FIRST ISSUE	AD
A	11FEB14	GENERAL REVISION	AD
B	13MAR14	GENERAL REVISION	AD
C	24MAR14	GENERAL REVISION	AD



Mott MacDonald
In association with

ARUP
Atkins China Limited
Clymene Enterprises

Deltares
Ecosystems Limited
SDA Marine Limited

Urbis Limited
URS Limited

Title
LANDSCAPE AND VISUAL MITIGATION ARRANGEMENT BLOW-UP PLAN - CHEK LAP KOK

Consultant's Signatures for Approval		Date
Design	PL	24MAR14
Checkers	TL	24MAR14
Design Supervisor		
Authorised Representative	AD	24MAR14

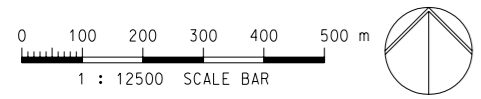
EXPANSION OF HONG KONG INTERNATIONAL AIRPORT INTO A THREE-RUNWAY SYSTEM	
Drawing No.	MCL / P132 / EIA / 15-028.4
Scale at A3	12500
Rev.	C

- POTENTIAL MITIGATION MEASURES
CONSTRUCTION PHASE:
- CM1 (L+V) - WORKS AREA MINIMISED
 - CM2 (V) - CONSTRUCTION PERIOD REDUCED TO PRACTICAL MINIMUM
 - CM3 (V) - PHASING OF THE CONSTRUCTION STAGE
 - CM4 (V) - CONSTRUCTION TRAFFIC (LAND AND SEA) REDUCED TO PRACTICAL MINIMUM
 - CM5 (V) - ERECTION OF DECORATIVE MESH SCREENS OR CONSTRUCTION HOARDINGS
 - CM6 (V) - AVOIDANCE OF EXCESSIVE HEIGHT AND BULK OF SITE BUILDINGS AND STRUCTURES
 - CM7 (V) - CONTROL OF NIGHT-TIME LIGHTING
 - CM8 (L) - PROTECT EXISTING TREES
 - CM9 (L) - TREES AFFECTED BY THE WORKS SHALL BE TRANSPLANTED
 - CM10 (L+V) - ADVANCED HYDROSEEDING AROUND TAXIWAYS AND RUNWAYS

- POTENTIAL MITIGATION MEASURES
OPERATIONAL PHASE:
- OM1 (V) - SENSITIVE LANDSCAPE DESIGN OF RECLAMATION EDGE
 - OM2 (V) - ALL ABOVE GROUND STRUCTURES SHALL BE SENSITIVELY DESIGNED
 - OM3 (V) - SENSITIVE DESIGN OF BUILDINGS AND STRUCTURES IN TERMS OF SCALE, HEIGHT AND BULK (VISUAL WEIGHT)
 - OM4 (V) - USE APPROPRIATE BUILDING MATERIALS AND COLOURS IN BUILT STRUCTURES
 - OM5 (V) - LIGHTING UNITS TO BE DIRECTIONAL AND MINIMISE UNNECESSARY LIGHT SPILL AND GLARE
 - OM6 (L+V) - GREENING MEASURES IMPLEMENTED
 - OM7 (L+V) - COMPENSATORY TREE PLANTING FOR ALL FELLED TREES
 - OM8 (L+V) - STREETScape SHALL BE SENSITIVELY DESIGNED
 - OM9 (L+V) - ALL STREETScape AREAS AND HARD AND SOFT LANDSCAPE AREAS DISTURBED DURING CONSTRUCTION SHALL BE REINSTATED
 - OM10 (V) - AESTHETIC IMPROVEMENT PLANTING OF VIADUCT STRUCTURE THROUGH GREENING OF STRUCTURE WHERE FEASIBLE
 - OM11 (V) - SENSITIVE DESIGN OF FOOTBRIDGES, NOISE BARRIERS AND ENCLOSURES WITH GREENING (SCREEN PLANTING/CLIMBERS/PLANTERS) AND CHROMATIC MEASURES

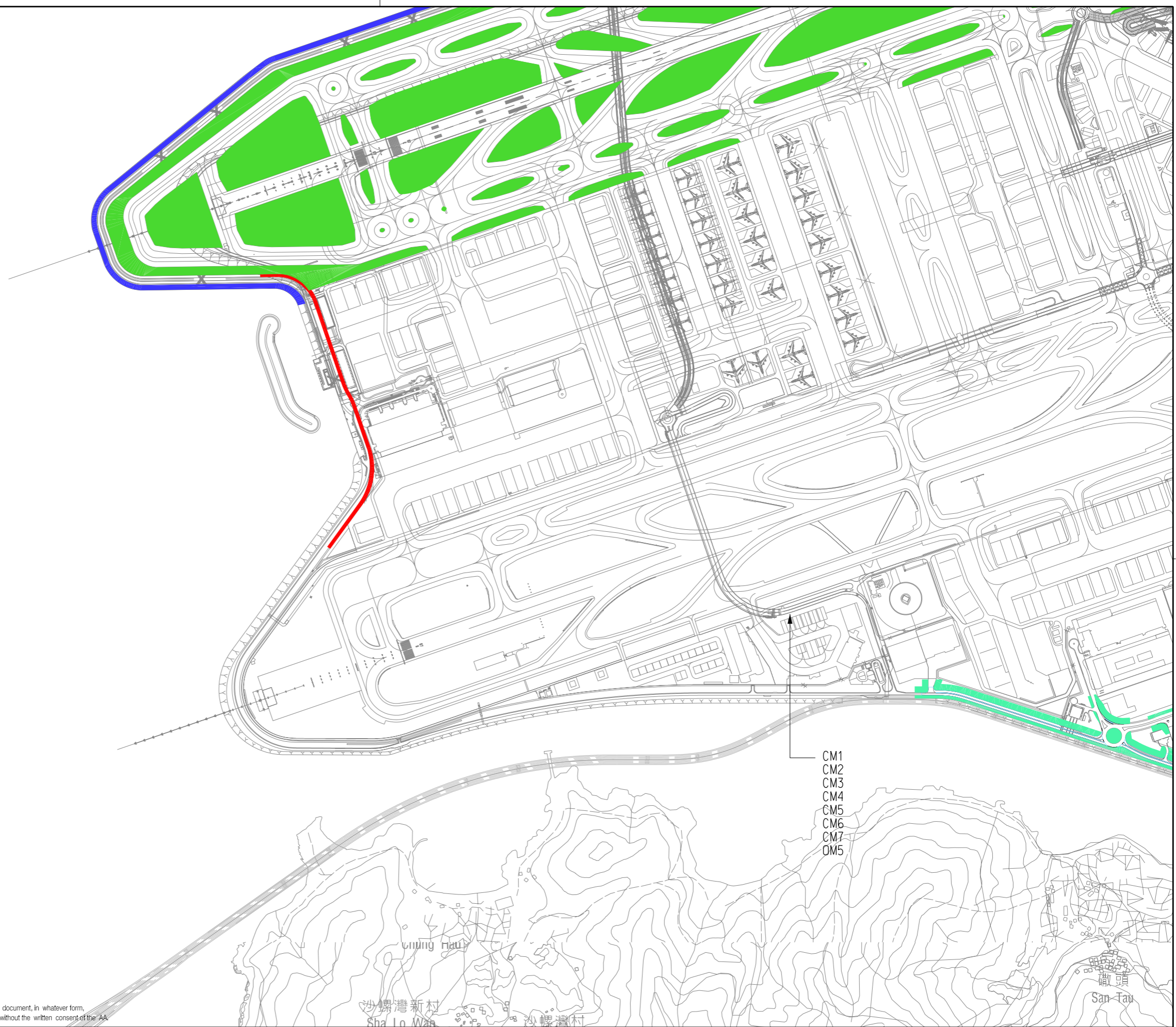
LEGEND:

- CM10, OM6
- OM2, OM3, OM4, OM6
- OM6, OM8, OM9
- OM6, OM10
- OM1, OM6



NOTE:
COLOURED MITIGATION MEASURES ARE LOCATION SPECIFIC NON-COLOURED MITIGATION MEASURES CAN BE APPLIED THROUGHOUT THE PROJECT SITE BOUNDARY
L = LANDSCAPE MITIGATION MEASURE
V = VISUAL MITIGATION MEASURE

Copyright in this document and all proprietary rights in the information it contains belong to the AA. It is a condition of the supply of this document, in whatever form, that the recipient shall hold it in confidence and shall not duplicate or otherwise reproduce it in whole or in part, nor disclose its contents without the written consent of the AA.



CM1
CM2
CM3
CM4
CM5
CM6
CM7
OM5

Rev.	Date	Description	Checked
-	21JAN14	FIRST ISSUE	AD
A	11FEB14	GENERAL REVISION	AD
B	13MAR14	GENERAL REVISION	AD
C	24MAR14	GENERAL REVISION	AD



Mott MacDonald
In association with

ARUP
Atkins China Limited
Clymene Enterprises

Deltares
Ecosystems Limited
SDA Marine Limited

Urbis Limited
URS Limited

Title
LANDSCAPE AND VISUAL MITIGATION ARRANGEMENT BLOW-UP PLAN - CHEK LAP KOK

Consultant's Signatures for Approval		Date
Design	PL	24MAR14
Checkers	TL	24MAR14
Design Supervisor		
Authorised Representative	AD	24MAR14

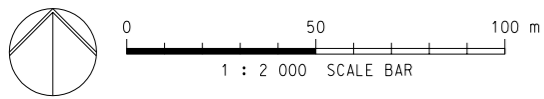
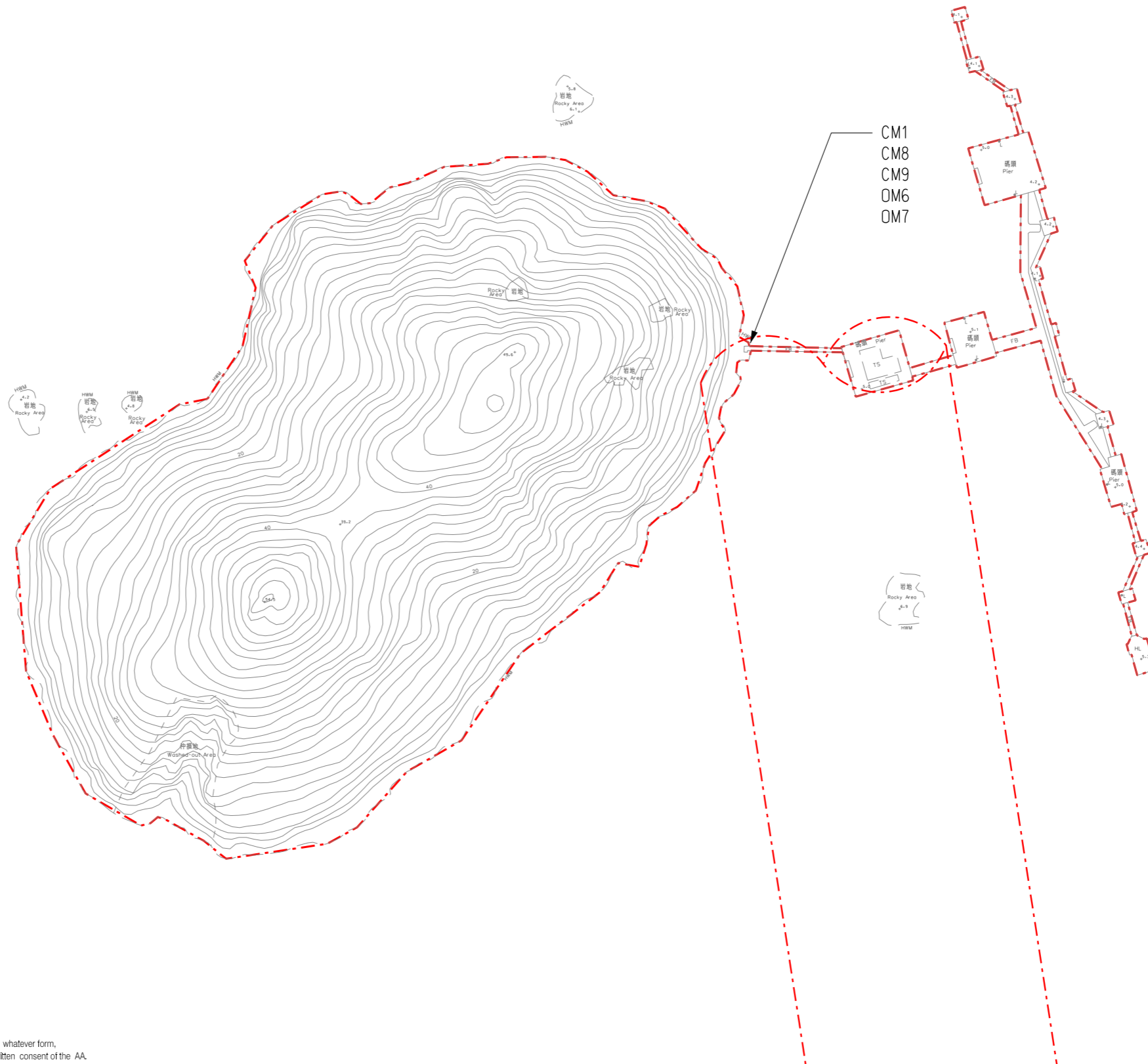
EXPANSION OF HONG KONG INTERNATIONAL AIRPORT INTO A THREE-RUNWAY SYSTEM	
Drawing No.	MCL / P132 / EIA / 15-028.5
Scale at A3	12500
Rev.	C

POTENTIAL MITIGATION MEASURES
CONSTRUCTION PHASE:
 CM1 (L+V) - WORKS AREA MINIMISED
 CM2 (V) - CONSTRUCTION PERIOD REDUCED TO PRACTICAL MINIMUM
 CM3 (V) - PHASING OF THE CONSTRUCTION STAGE
 CM4 (V) - CONSTRUCTION TRAFFIC (LAND AND SEA) REDUCED TO PRACTICAL MINIMUM
 CM5 (V) - ERECTION OF DECORATIVE MESH SCREENS OR CONSTRUCTION HOARDINGS
 CM6 (V) - AVOIDANCE OF EXCESSIVE HEIGHT AND BULK OF SITE BUILDINGS AND STRUCTURES
 CM7 (V) - CONTROL OF NIGHT-TIME LIGHTING
 CM8 (L) - PROTECT EXISTING TREES
 CM9 (L) - TREES AFFECTED BY THE WORKS SHALL BE TRANSPLANTED
 CM10 (L+V) - ADVANCED HYDROSEEDING AROUND TAXIWAYS AND RUNWAYS

POTENTIAL MITIGATION MEASURES
OPERATIONAL PHASE:
 OM1 (V) - SENSITIVE LANDSCAPE DESIGN OF RECLAMATION EDGE
 OM2 (V) - ALL ABOVE GROUND STRUCTURES SHALL BE SENSITIVELY DESIGNED
 OM3 (V) - SENSITIVE DESIGN OF BUILDINGS AND STRUCTURES IN TERMS OF SCALE, HEIGHT AND BULK (VISUAL WEIGHT)
 OM4 (V) - USE APPROPRIATE BUILDING MATERIALS AND COLOURS IN BUILT STRUCTURES
 OM5 (V) - LIGHTING UNITS TO BE DIRECTIONAL AND MINIMISE UNNECESSARY LIGHT SPILL AND GLARE
 OM6 (L+V) - GREENING MEASURES IMPLEMENTED
 OM7 (L+V) - COMPENSATORY TREE PLANTING FOR ALL FELLED TREES
 OM8 (L+V) - STREETSCAPE SHALL BE SENSITIVELY DESIGNED
 OM9 (L+V) - ALL STREETSCAPE AREAS AND HARD AND SOFT LANDSCAPE AREAS DISTURBED DURING CONSTRUCTION SHALL BE REINSTATED
 OM10 (V) - AESTHETIC IMPROVEMENT PLANTING OF VIADUCT STRUCTURE THROUGH GREENING OF STRUCTURE WHERE FEASIBLE
 OM11 (V) - SENSITIVE DESIGN OF FOOTBRIDGES, NOISE BARRIERS AND ENCLOSURES WITH GREENING (SCREEN PLANTING/CLIMBERS/PLANTERS) AND CHROMATIC MEASURES

--- PROJECT SITE BOUNDARY

NOTE:
 COLOURED MITIGATION MEASURES ARE LOCATION SPECIFIC NON-COLOURED MITIGATION MEASURES CAN BE APPLIED THROUGHOUT THE PROJECT SITE BOUNDARY
 L = LANDSCAPE MITIGATION MEASURE
 V = VISUAL MITIGATION MEASURE



Copyright in this document and all proprietary rights in the information it contains belong to the AA. It is a condition of the supply of this document, in whatever form, that the recipient shall hold it in confidence and shall not duplicate or otherwise reproduce it in whole or in part, nor disclose its contents without the written consent of the AA.

Rev.	Date	Description	Checked
-	11FEB14	FIRST ISSUE	AD
A	20FEB14	GENERAL REVISION	AD
B	13MAR14	GENERAL REVISION	AD
C	24MAR14	GENERAL REVISION	AD



Mott MacDonald
 In association with

ARUP
 Atkins China Limited
 Clymene Enterprises

Deltares
 Ecosystems Limited
 SDA Marine Limited

Urbis Limited
 URS Limited

Title
LANDSCAPE AND VISUAL MITIGATION ARRANGEMENT PLAN - SHA CHAU

Consultant's Signatures for Approval		Date
Design	PL	24MAR14
Checkers	TL	24MAR14
Design Supervisor		
Authorised Representative	AD	24MAR14

EXPANSION OF HONG KONG INTERNATIONAL AIRPORT INTO A THREE-RUNWAY SYSTEM	
Drawing No.	Scale at A3 2000
MCL / P132 / EIA / 15-028.6	Rev. C