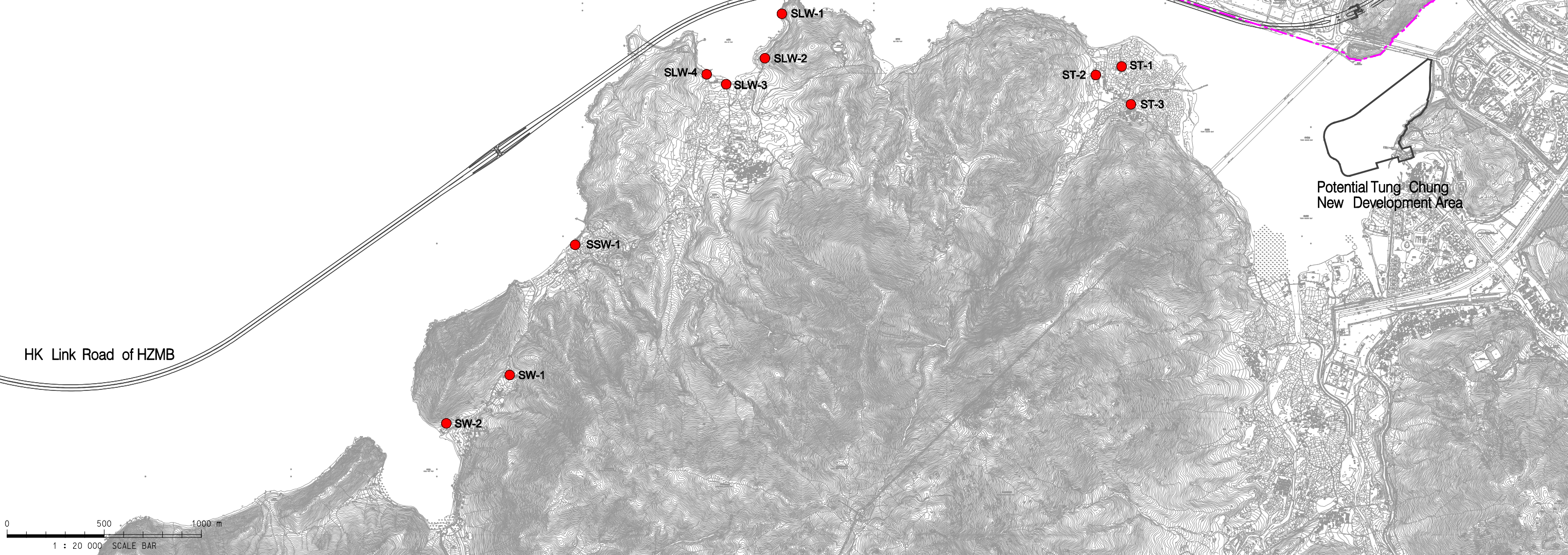
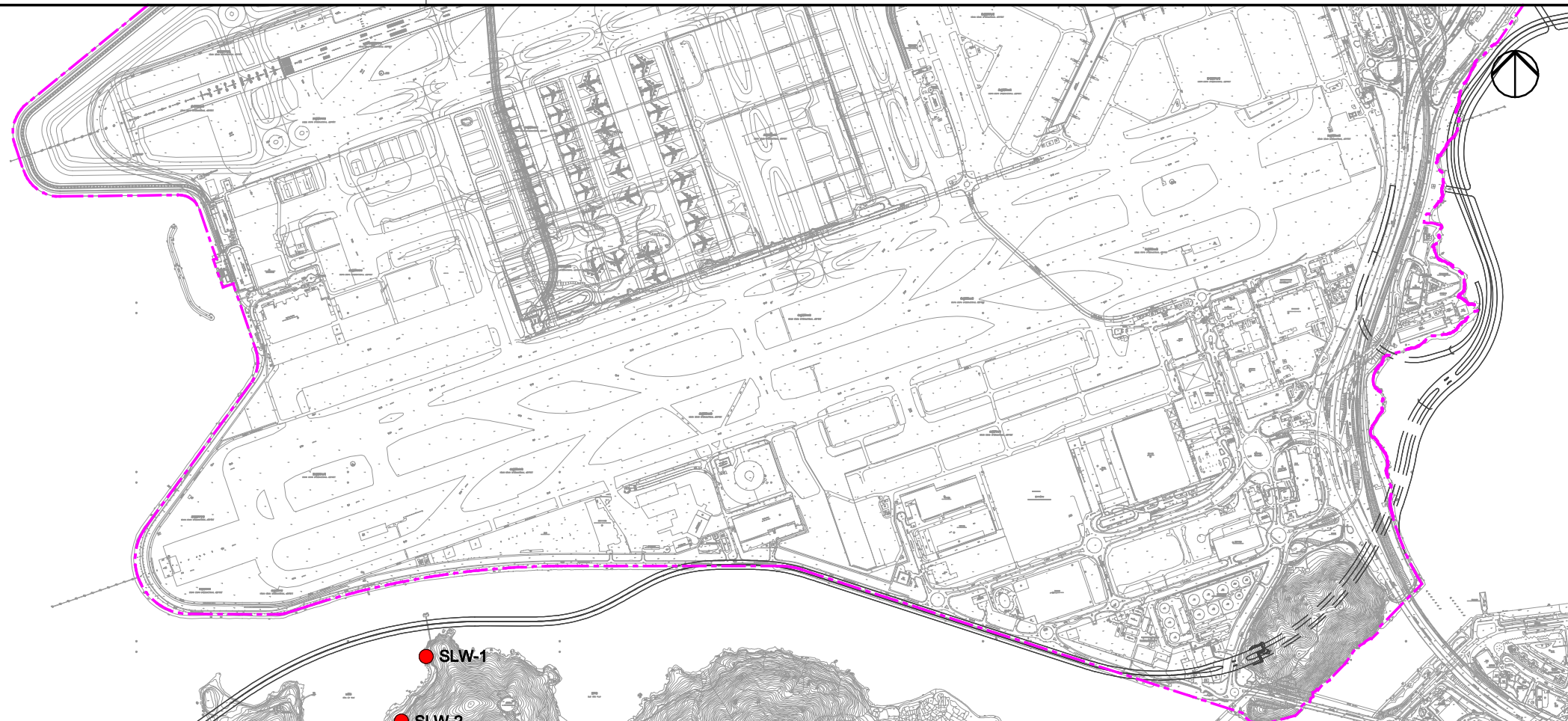


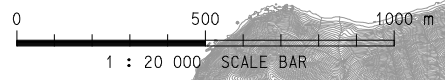
Legend

- - - Project Site Boundary
(Combined Boundary of the
Proposed Land Formation Footprint
and Existing Airport Island)
- Representative Human Receptor



Potential Tung Chung
New Development Area

HK Link Road of HZMB



Copyright in this document and all proprietary rights in the information it contains belong to the AA. It is a condition of the supply of this document, in whatever form, that the recipient shall hold it in confidence and shall not duplicate or otherwise reproduce it in whole or in part, nor disclose its contents without the written consent of the AA.

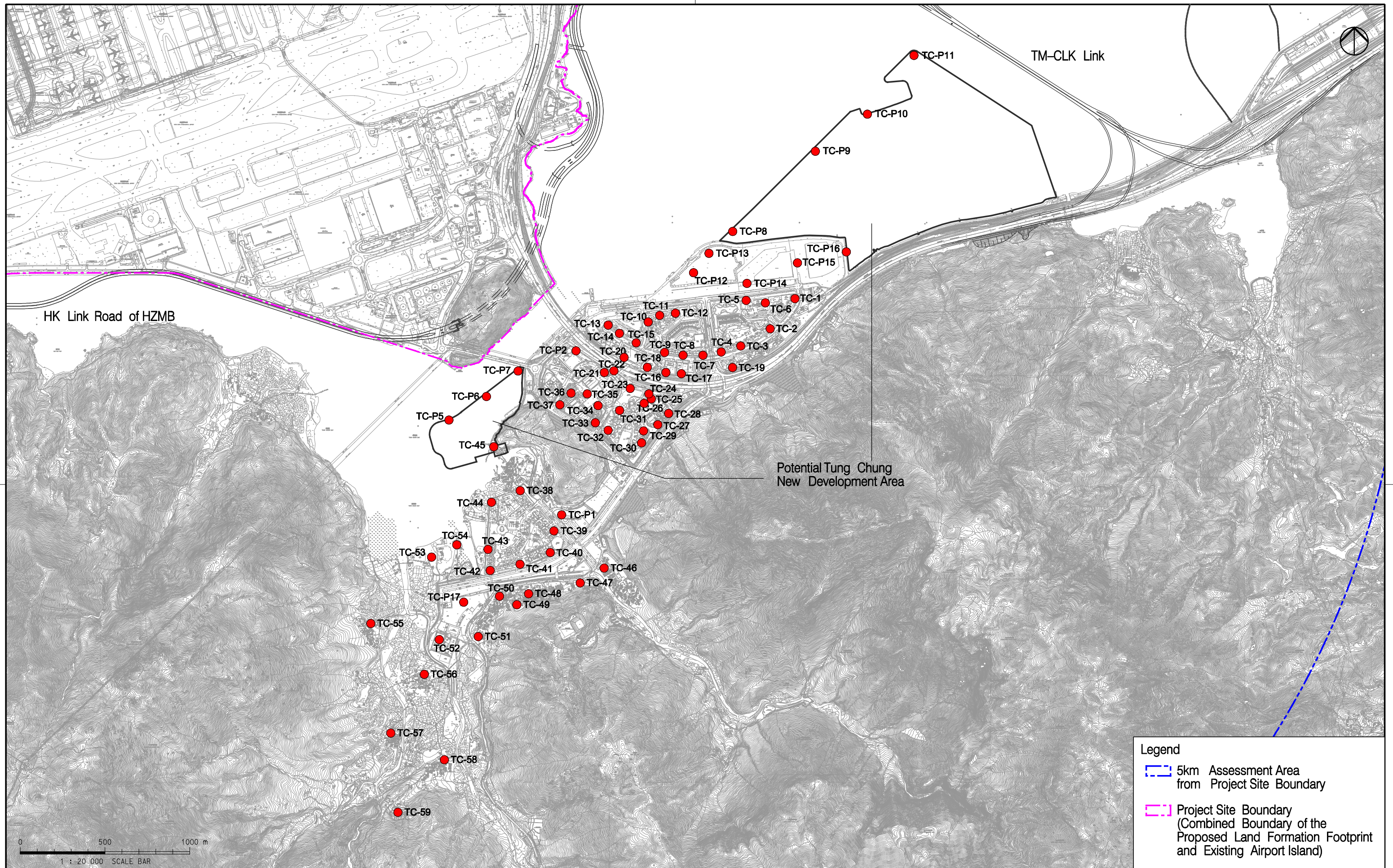
Rev.	Date	Description	Checked
C	23OCT13	THIRD ISSUE	GK
D	20JAN14	FOURTH ISSUE	GK
E	24JAN14	FIFTH ISSUE	GK
F	04FEB14	SIXTH ISSUE	GK
G	24MAR14	SEVENTH ISSUE	GK



Title
**Locations of Representative Human Receptors
(in Lantau West)**

Consultant's Signatures for Approval		Date
Design	GL	24MAR14
Checkers	GK	24MAR14
Design Supervisor	EC	24MAR14
Authorised Representative	AFK	24MAR14

EXPANSION OF HONG KONG INTERNATIONAL AIRPORT INTO A THREE-RUNWAY SYSTEM	
Drawing No.	MCL /P132 /EIA /17-3-002
Scale at A3	1:20000
Rev.	G



Copyright in this document and all proprietary rights in the information it contains belong to the AA. It is a condition of the supply of this document, in whatever form, that the recipient shall hold it in confidence and shall not duplicate or otherwise reproduce it in whole or in part, nor disclose its contents without the written consent of the AA.

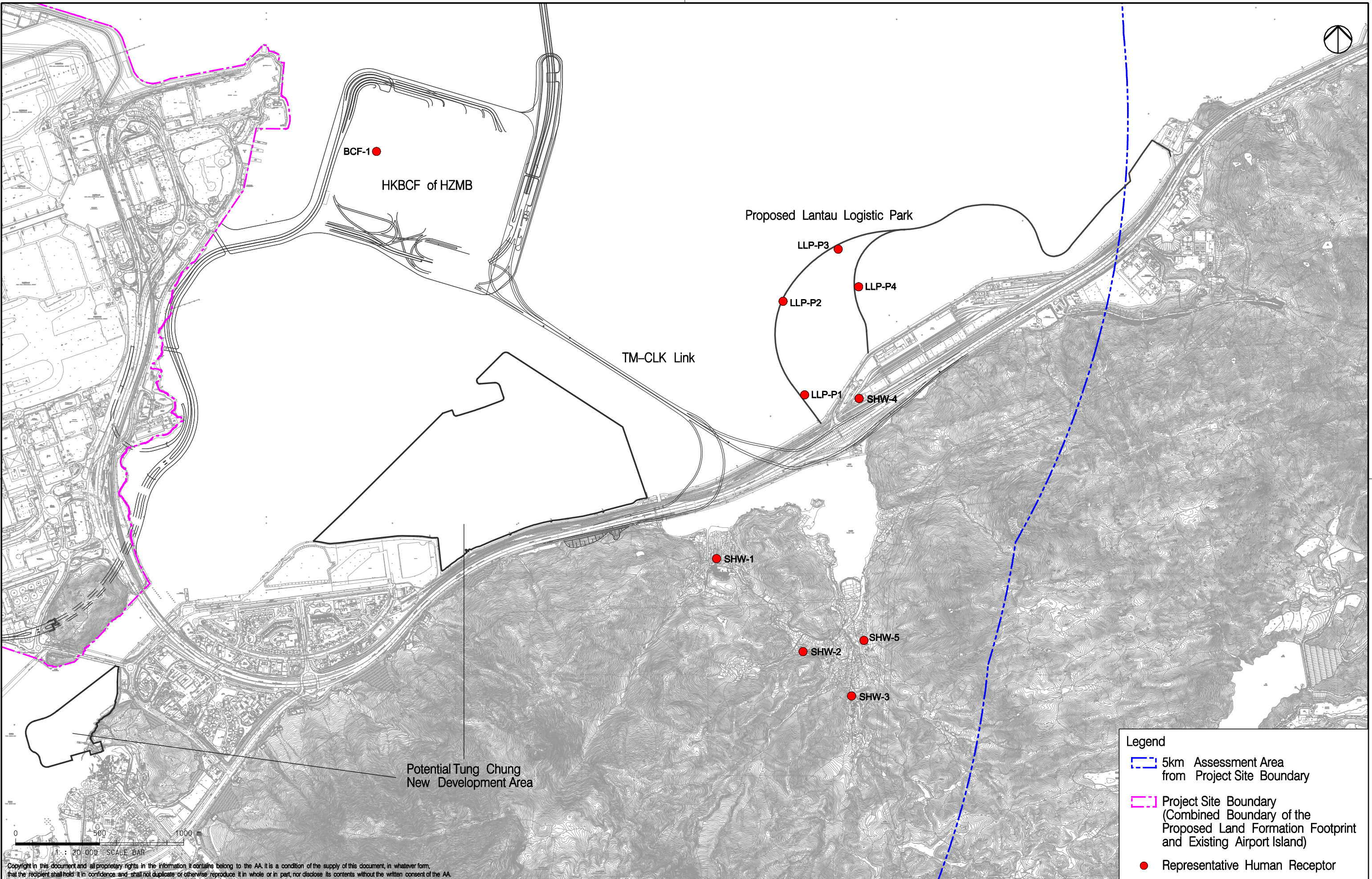
Rev.	Date	Description	Checked
C	23OCT13	THIRD ISSUE	GK
D	20JAN14	FOURTH ISSUE	GK
E	24JAN14	FIFTH ISSUE	GK
F	04FEB14	SIXTH ISSUE	GK
G	24MAR14	SEVENTH ISSUE	GK



Title
Locations of Representative Human Receptors (in Lantau East)

Consultant's Signatures for Approval		Date
Design	GL	24MAR14
Checkers	GK	24MAR14
Design Supervisor	EC	24MAR14
Authorised Representative	AFK	24MAR14

EXPANSION OF HONG KONG INTERNATIONAL AIRPORT INTO A THREE-RUNWAY SYSTEM		Scale at A3 1:20000
Drawing No.	MCL /P132 /EIA /17-3-003	Rev. G



Legend

- 5km Assessment Area from Project Site Boundary
- Project Site Boundary (Combined Boundary of the Proposed Land Formation Footprint and Existing Airport Island)
- Representative Human Receptor

Copyright in this document and all proprietary rights in the information it contains belong to the AA. It is a condition of the supply of this document, in whatever form, that the recipient shall hold it in confidence and shall not duplicate or otherwise reproduce it in whole or in part, nor disclose its contents without the written consent of the AA.

Rev.	Date	Description	Checked
C	23OCT13	THIRD ISSUE	GK
D	20JAN14	FOURTH ISSUE	GK
E	24JAN14	FIFTH ISSUE	GK
F	04FEB14	SIXTH ISSUE	GK
G	24MAR14	SEVENTH ISSUE	GK



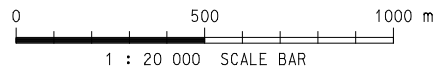
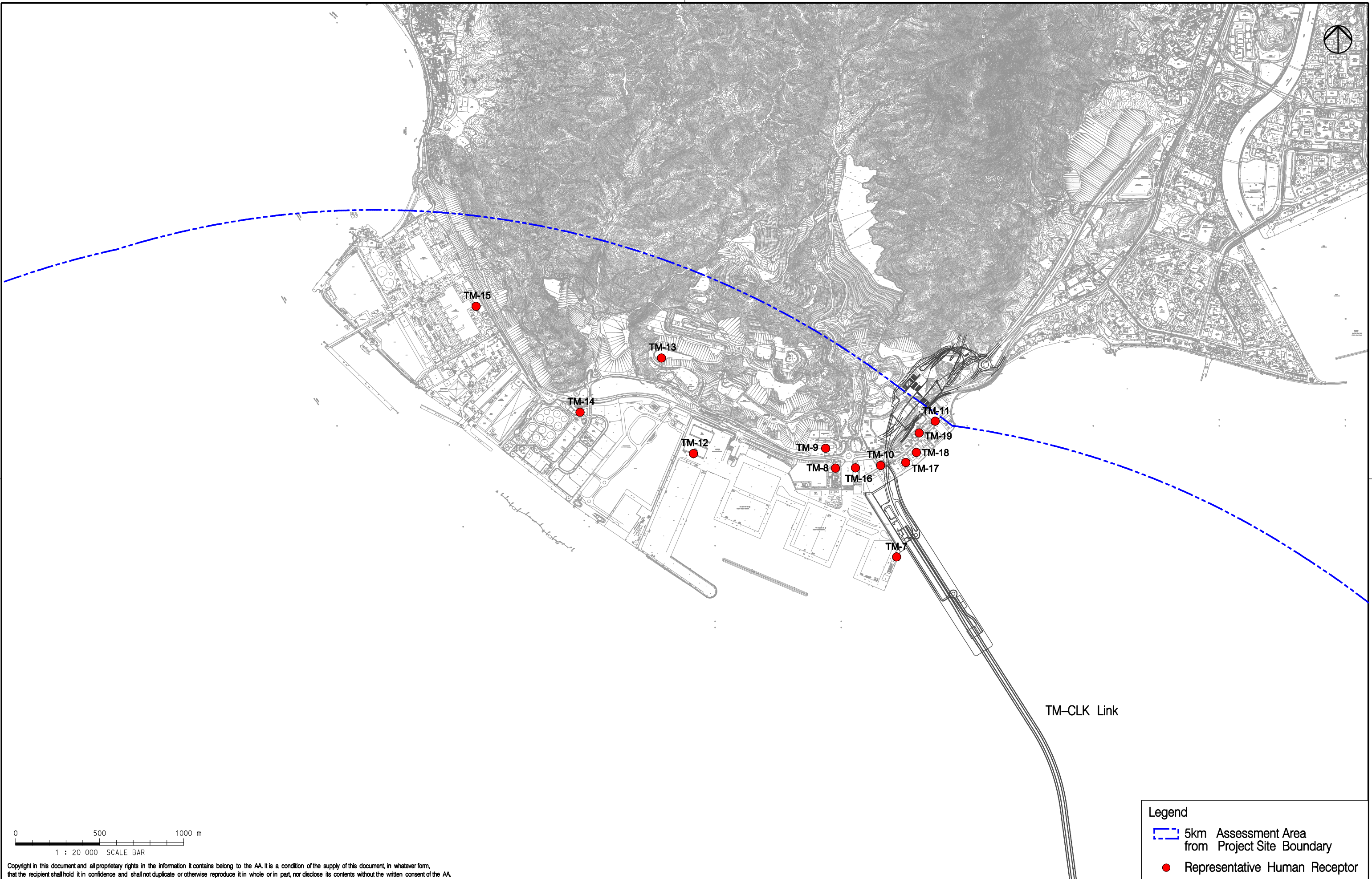
Mott MacDonald
In association with

ARUP	Deltares	Urbis Limited
Atkins China Limited	Ecosystems Limited	URS Limited
Clymene Enterprises	SDA Marine Limited	

Title
**Locations of Representative Human Receptors
(in Siu Ho Wan)**

Consultant's Signatures for Approval		Date
Design	GL	24MAR14
Checkers	GK	24MAR14
Design Supervisor	EC	24MAR14
Authorised Representative	AFK	24MAR14

EXPANSION OF HONG KONG INTERNATIONAL AIRPORT INTO A THREE-RUNWAY SYSTEM	
Drawing No.	Scale at A3 1:20000
MCL /P132 /EIA /17-3-004	
Rev.	G



Copyright in this document and all proprietary rights in the information it contains belong to the AA. It is a condition of the supply of this document, in whatever form, that the recipient shall hold it in confidence and shall not duplicate or otherwise reproduce it in whole or in part, nor disclose its contents without the written consent of the AA.

Legend

- 5km Assessment Area from Project Site Boundary
- Representative Human Receptor

Rev.	Date	Description	Checked
C	23OCT13	THIRD ISSUE	GK
D	20JAN14	FOURTH ISSUE	GK
E	24JAN14	FIFTH ISSUE	GK
F	04FEB14	SIXTH ISSUE	GK
G	24MAR14	SEVENTH ISSUE	GK



Mott MacDonald
In association with

ARUP	Deltares	Urbis Limited
Atkins China Limited	Ecosystems Limited	URS Limited
Clymene Enterprises	SDA Marine Limited	

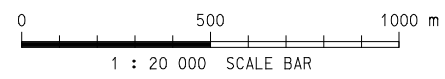
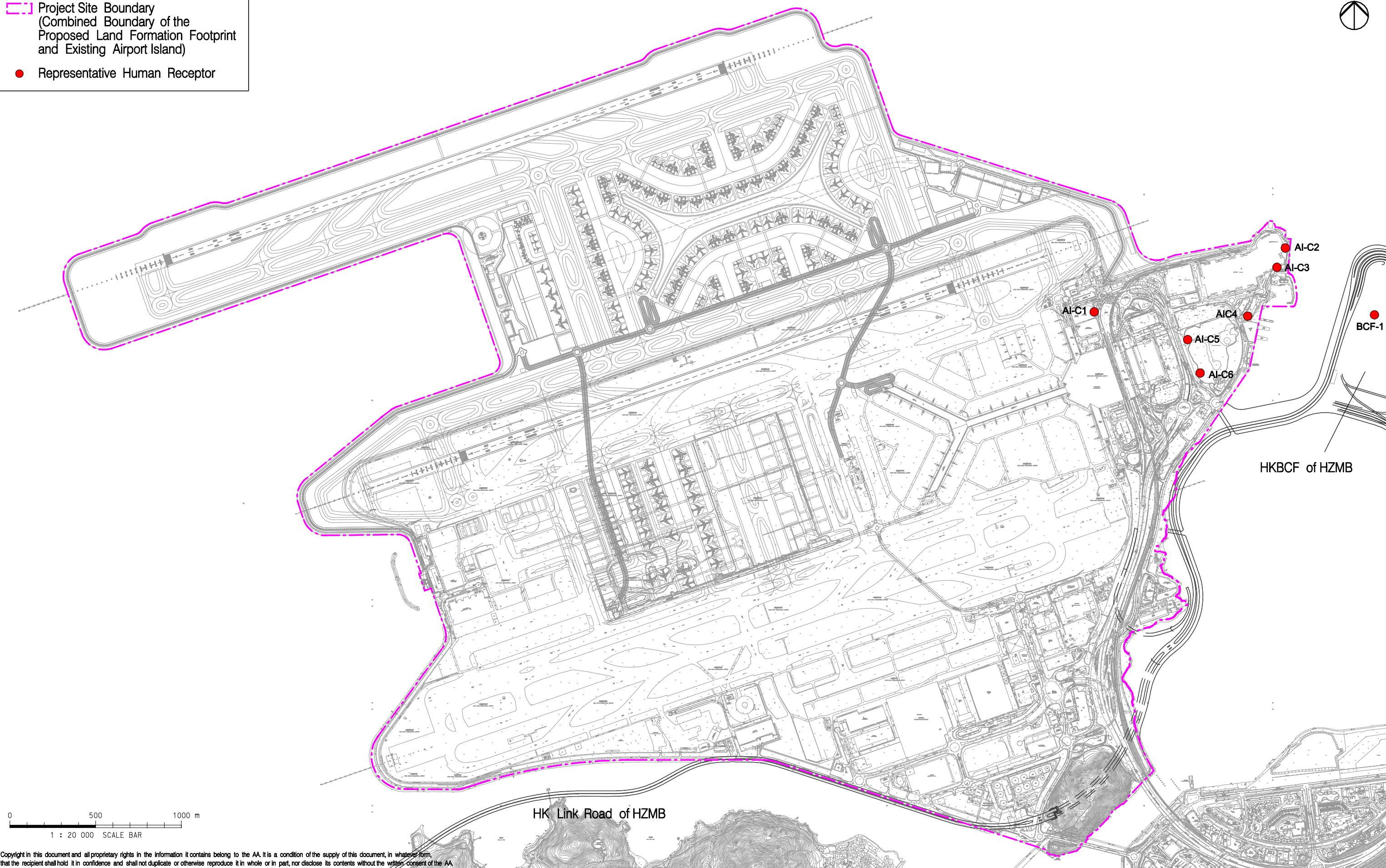
Title
**Locations of Representative Human Receptors
(in Tuen Mun)**

Consultant's Signatures for Approval		Date
Design	GL	24MAR14
Checkers	GK	24MAR14
Design Supervisor	EC	24MAR14
Authorised Representative	AFK	24MAR14

EXPANSION OF HONG KONG INTERNATIONAL AIRPORT INTO A THREE-RUNWAY SYSTEM		Scale at A3 1:20000
Drawing No.	MCL /P132 /EIA /17-3-005	Rev. G

Legend

- Project Site Boundary
(Combined Boundary of the Proposed Land Formation Footprint and Existing Airport Island)
- Representative Human Receptor



Copyright in this document and all proprietary rights in the information it contains belong to the AA. It is a condition of the supply of this document, in whatever form, that the recipient shall hold it in confidence and shall not duplicate or otherwise reproduce it in whole or in part, nor disclose its contents without the written consent of the AA.

Rev.	Date	Description	Checked
E	10JAN14	FIFTH ISSUE	GK
F	24JAN14	SIXTH ISSUE	GK
G	04FEB14	SEVENTH ISSUE	GK
H	06MAR14	EIGHTH ISSUE	GK
I	24MAR14	NINTH ISSUE	GK



Title
**Locations of Representative Human Receptors
(at Hong Kong International Airport)**

Consultant's Signatures for Approval		Date
Design	GL	24MAR14
Checkers	GK	24MAR14
Design Supervisor	EC	24MAR14
Authorised Representative	AFK	24MAR14

EXPANSION OF HONG KONG INTERNATIONAL AIRPORT INTO A THREE-RUNWAY SYSTEM	
Drawing No.	Scale at A3
MCL /P132 /EIA /17-3-006	1:20000
Rev.	1