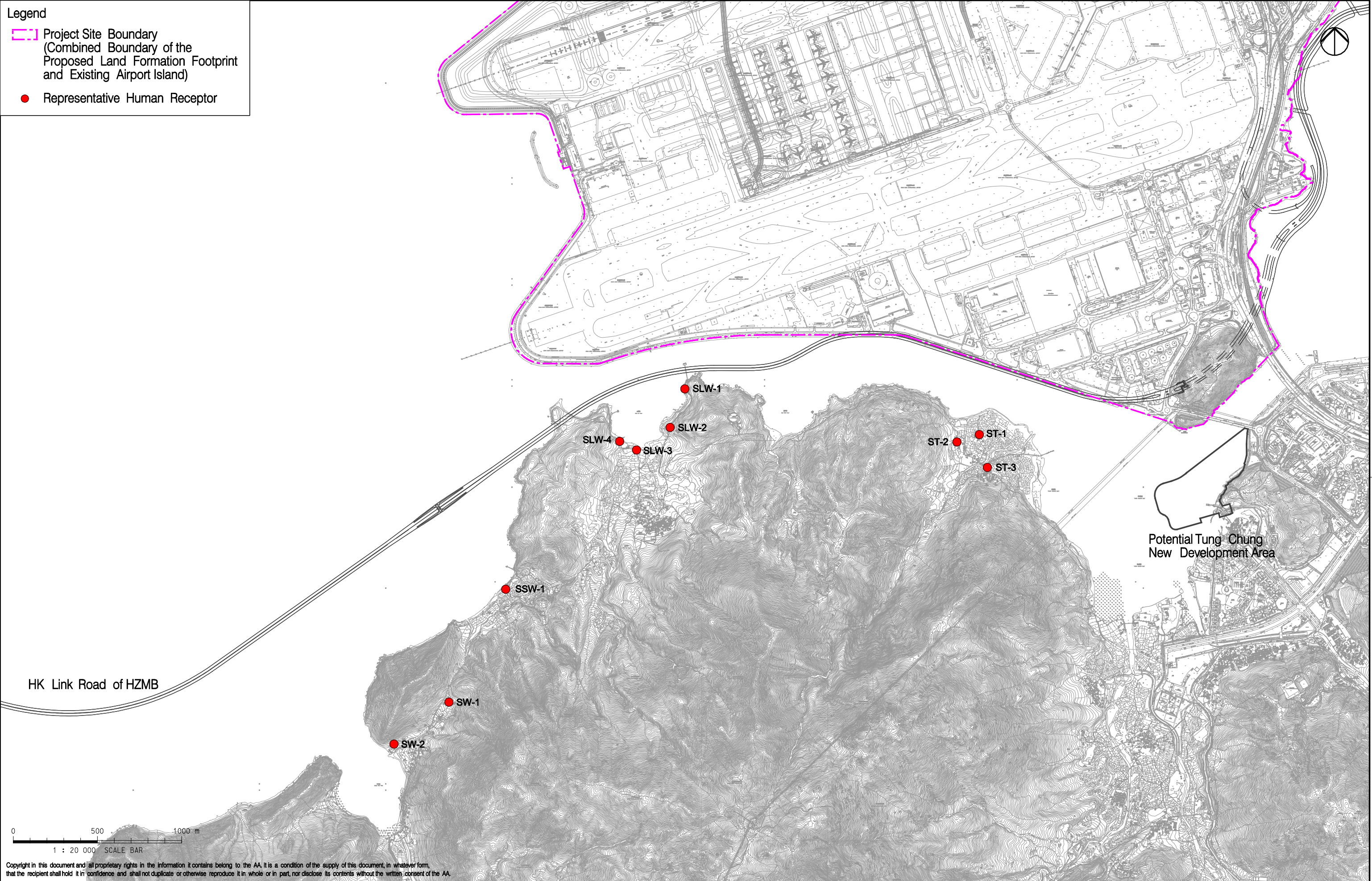


Legend

Project Site Boundary
(Combined Boundary of the
Proposed Land Formation Footprint
and Existing Airport Island)

Representative Human Receptor



Copyright in this document and all proprietary rights in the information it contains belong to the AA. It is a condition of the supply of this document, in whatever form, that the recipient shall hold it in confidence and shall not duplicate or otherwise reproduce it in whole or in part, nor disclose its contents without the written consent of the AA.

Rev.	Date	Description	Checked
C	23OCT13	THIRD ISSUE	GK
D	20JAN14	FOURTH ISSUE	GK
E	24JAN14	FIFTH ISSUE	GK
F	04FEB14	SIXTH ISSUE	GK
G	24MAR14	SEVENTH ISSUE	GK

香港國際機場
HONG KONG INTERNATIONAL AIRPORT

Airport Authority 190A Tower, 1 Sky Plaza Road, Hong Kong International Airport, Lantau, Hong Kong
Tel: (852) 2986 7111

Fax: (852) 2986 0717

Mott MacDonald

In association with

ARUP
Atkins China Limited
Clymene Enterprises

Deltares
Ecosystems Limited
SDA Marine Limited

Urbis Limited
URS Limited

Title

Locations of Representative Human Receptors
(in Lantau West)

Consultant's Signatures for Approval		Date
Design	GL	24MAR14
Checkers	GK	24MAR14
Design Supervisor	EC	24MAR14
Authorised Representative	AFK	24MAR14

EXPANSION OF HONG KONG INTERNATIONAL AIRPORT
INTO A THREE-RUNWAY SYSTEM

Drawing No.

MCL /P132 /EIA /17-3-002

Scale at A3
1:20000

Rev.
G