



806000 E

808000 E

810000 E

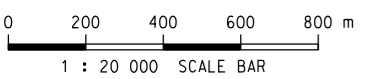
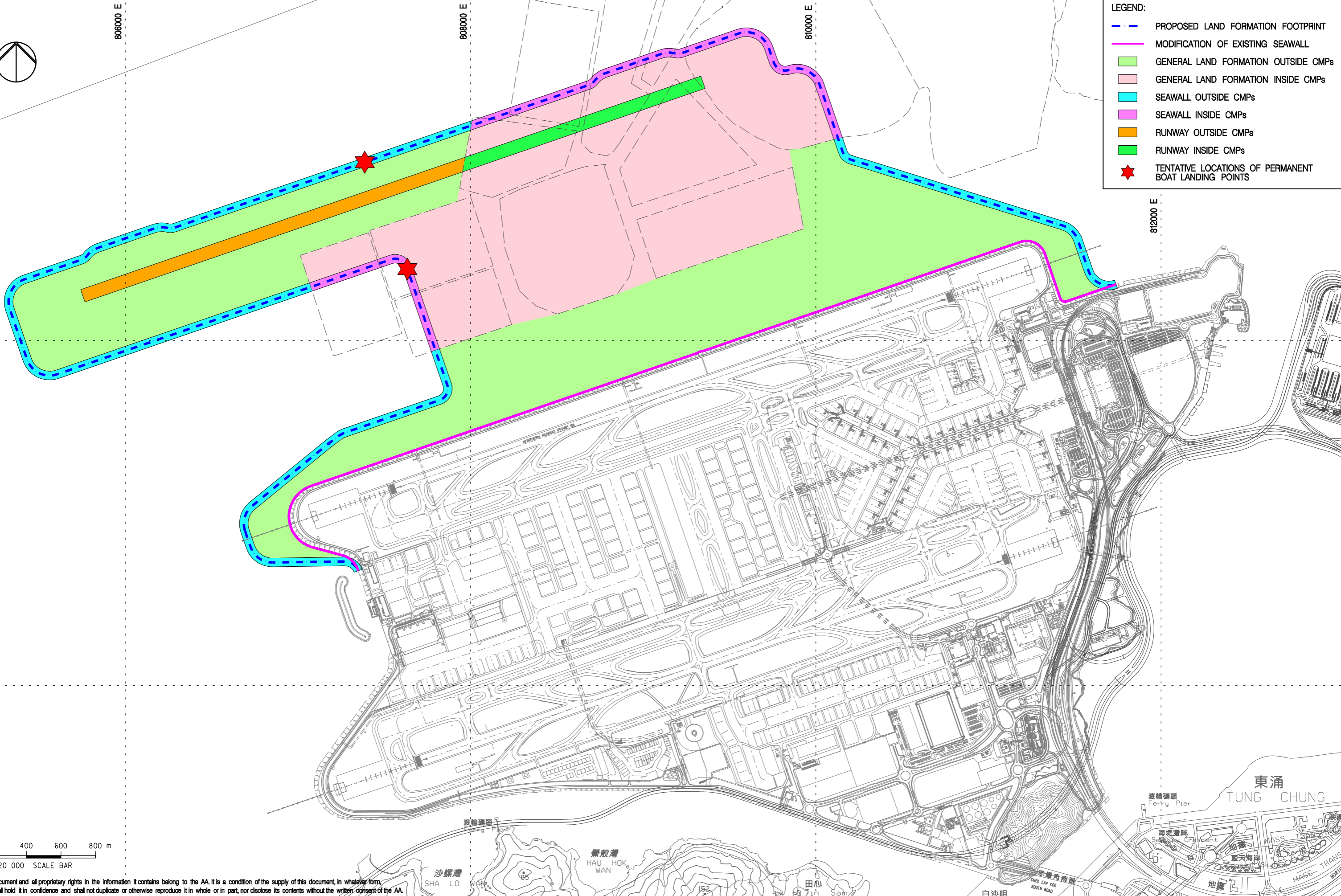
812000 E

820000 N

818000 N

LEGEND:

- PROPOSED LAND FORMATION FOOTPRINT
- MODIFICATION OF EXISTING SEAWALL
- GENERAL LAND FORMATION OUTSIDE CMPs
- GENERAL LAND FORMATION INSIDE CMPs
- SEAWALL OUTSIDE CMPs
- SEAWALL INSIDE CMPs
- RUNWAY OUTSIDE CMPs
- RUNWAY INSIDE CMPs
- ★ TENTATIVE LOCATIONS OF PERMANENT BOAT LANDING POINTS



Copyright in this document and all proprietary rights in the information it contains belong to the AA. It is a condition of the supply of this document, in whatever form, that the recipient shall hold it in confidence and shall not duplicate or otherwise reproduce it in whole or in part, nor disclose its contents without the written consent of the AA.

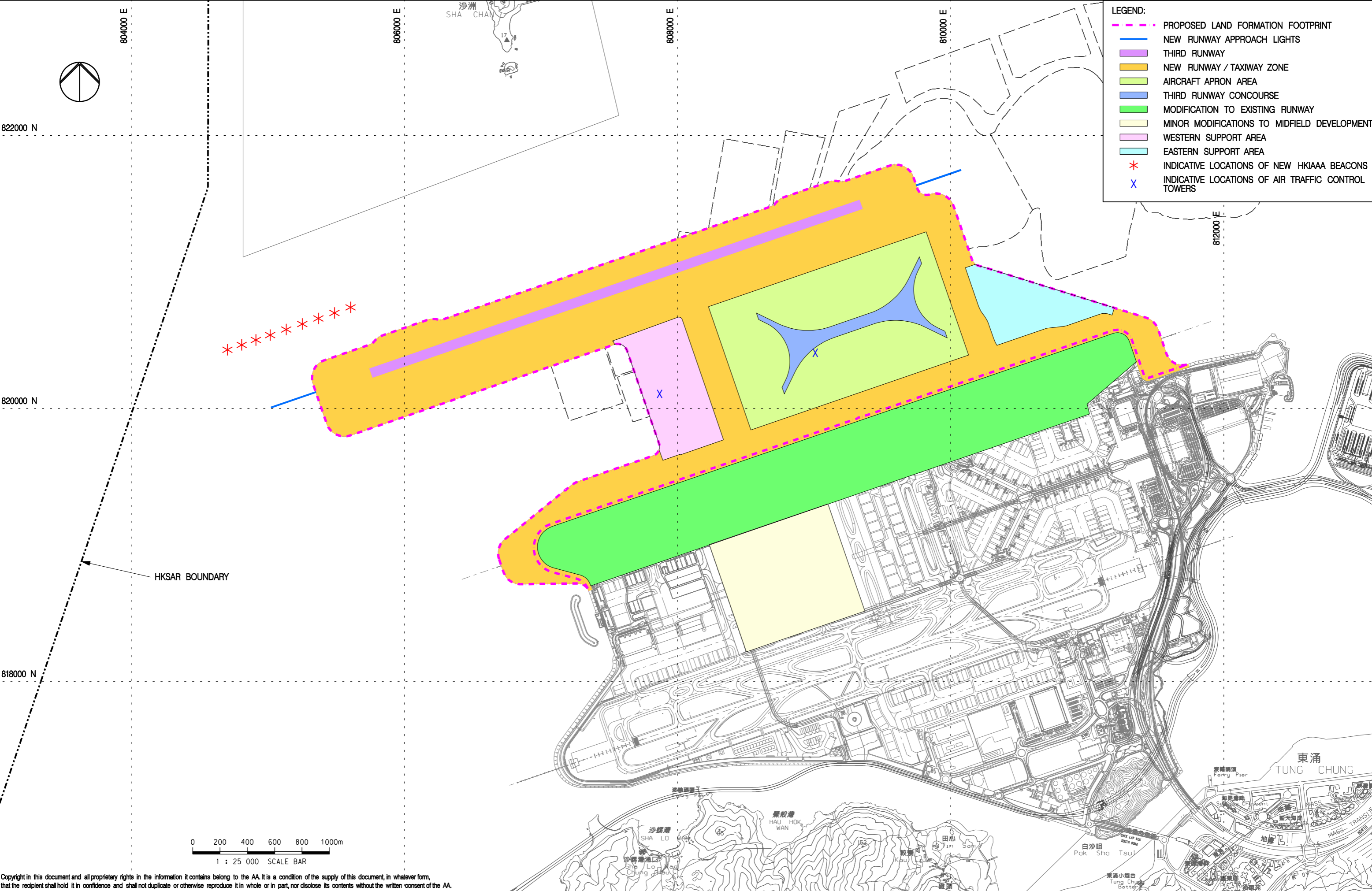
Rev.	Date	Description	Checked
A	18SEP13	FIRST ISSUE	DC
B	25OCT13	GENERAL REVISION	DC
C	19MAR14	GENERAL REVISION	DC



**KEY PROJECT COMPONENTS –
LAND FORMATION**

Consultant's Signatures for Approval		Date
Design	DC	18SEP13
Checkers	DC	18SEP13
Design Supervisor	EC	21MAR14
Authorised Representative	AFK	21MAR14

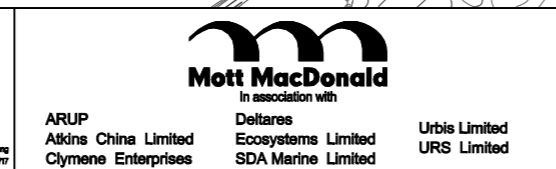
EXPANSION OF HONG KONG INTERNATIONAL AIRPORT INTO A THREE-RUNWAY SYSTEM	
Drawing No.	MCL / P132 / EIA / 4-001
Scale at A3	1 : 20000
Rev.	C



- LEGEND:**
- PROPOSED LAND FORMATION FOOTPRINT
 - NEW RUNWAY APPROACH LIGHTS
 - THIRD RUNWAY
 - NEW RUNWAY / TAXIWAY ZONE
 - AIRCRAFT APRON AREA
 - THIRD RUNWAY CONCOURSE
 - MODIFICATION TO EXISTING RUNWAY
 - MINOR MODIFICATIONS TO MIDFIELD DEVELOPMENT
 - WESTERN SUPPORT AREA
 - EASTERN SUPPORT AREA
 - * INDICATIVE LOCATIONS OF NEW HKIAAA BEACONS
 - X INDICATIVE LOCATIONS OF AIR TRAFFIC CONTROL TOWERS

Copyright in this document and all proprietary rights in the information it contains belong to the AA. It is a condition of the supply of this document, in whatever form, that the recipient shall hold it in confidence and shall not duplicate or otherwise reproduce it in whole or in part, nor disclose its contents without the written consent of the AA.

Rev.	Date	Description	Checked
A	18SEP13	FIRST ISSUE	DC
B	31OCT13	GENERAL REVISION	DC
C	29NOV13	GENERAL REVISION	DC
D	23JAN14	GENERAL REVISION	DC



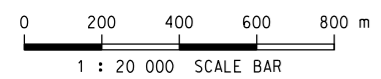
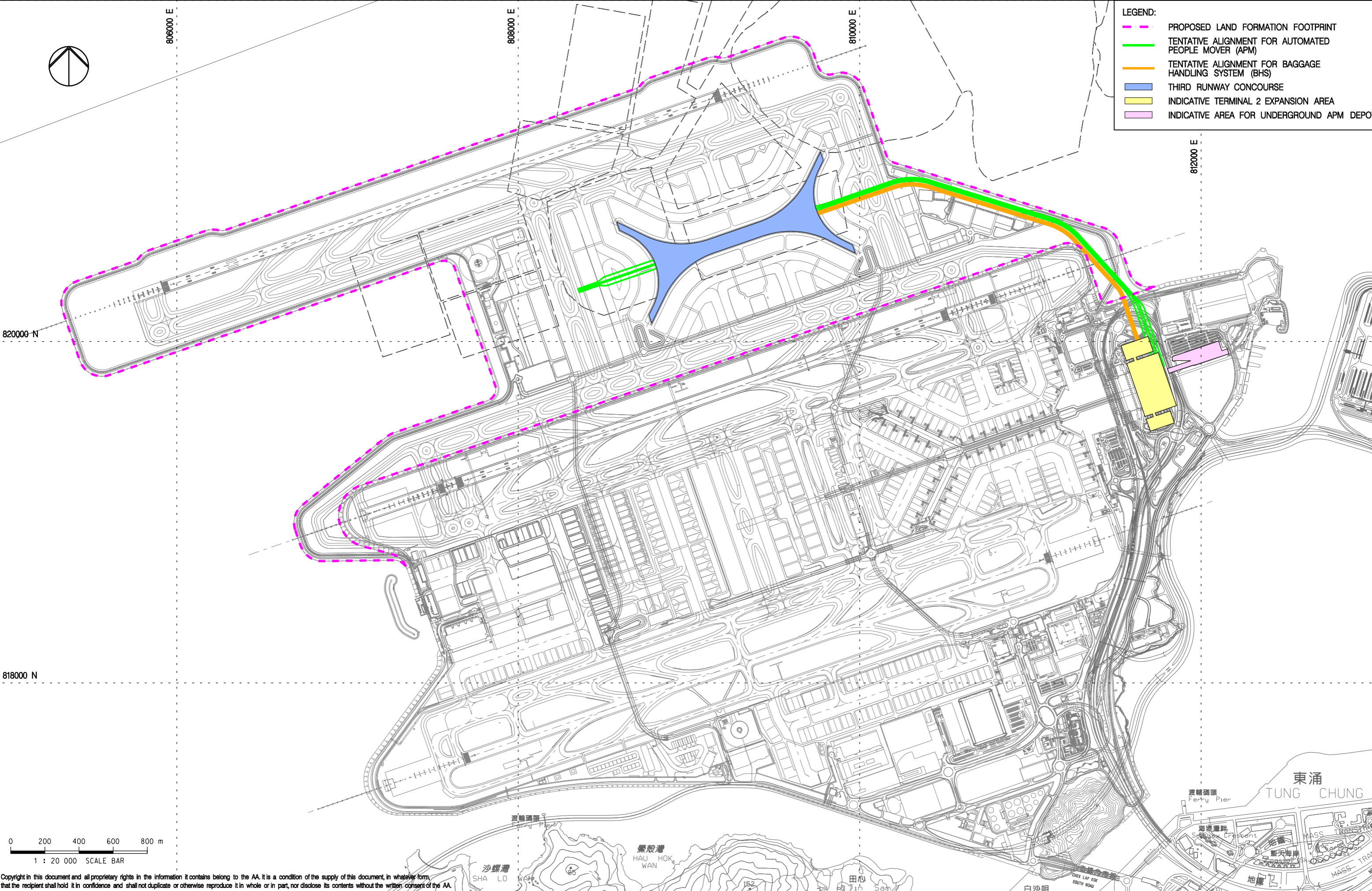
KEY PROJECT COMPONENTS – AIRFIELD FACILITIES

Consultant's Signatures for Approval		Date
Design	DC	18SEP13
Checkers	DC	18SEP13
Design Supervisor	EC	21MAR14
Authorised Representative	AFK	21MAR14

EXPANSION OF HONG KONG INTERNATIONAL AIRPORT INTO A THREE-RUNWAY SYSTEM	
Drawing No.	MCL / P132 / EIA / 4-002
Scale at A3	1 : 25000
Rev.	D

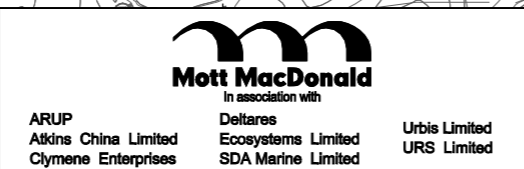


	PROPOSED LAND FORMATION FOOTPRINT
	TENTATIVE ALIGNMENT FOR AUTOMATED PEOPLE MOVER (APM)
	TENTATIVE ALIGNMENT FOR BAGGAGE HANDLING SYSTEM (BHS)
	THIRD RUNWAY CONCOURSE
	INDICATIVE TERMINAL 2 EXPANSION AREA
	INDICATIVE AREA FOR UNDERGROUND APM DEPOT



Copyright in this document and all proprietary rights in the information it contains belong to the AA. It is a condition of the supply of this document, in whatever form, that the recipient shall hold it in confidence and shall not duplicate or otherwise reproduce it in whole or in part, nor disclose its contents without the written consent of the AA.

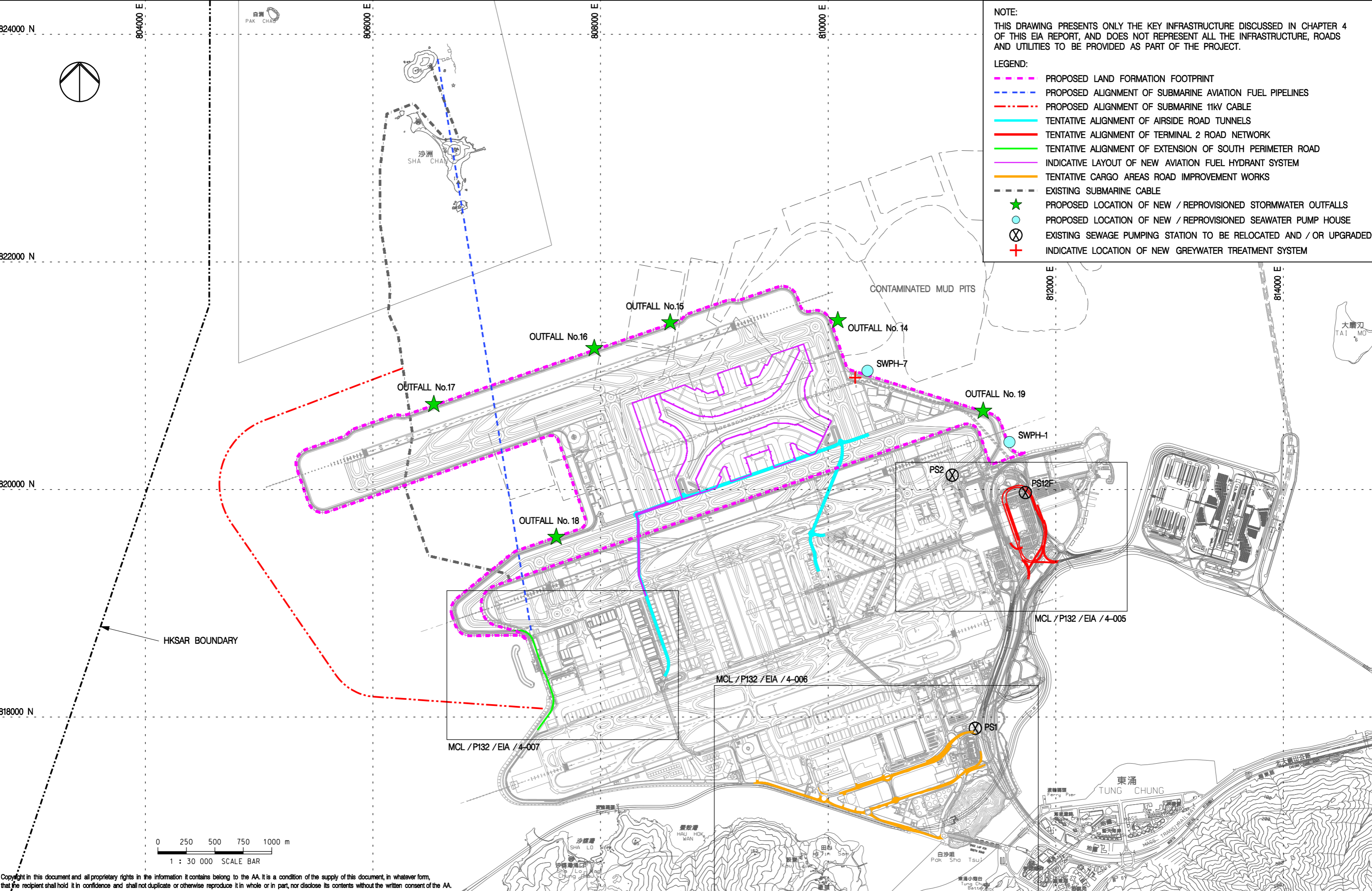
Rev.	Date	Description	Checked
A	20SEP13	FIRST ISSUE	DC
B	25OCT13	GENERAL REVISION	DC
C	05DEC13	GENERAL REVISION	DC
D	08JAN14	GENERAL REVISION	EY



Title
KEY PROJECT COMPONENTS – PASSENGER FACILITIES

Consultant's Signatures for Approval		Date
Design	DC	20SEP13
Checkers	DC	20SEP13
Design Supervisor	EC	21MAR14
Authorised Representative	AFK	21MAR14

EXPANSION OF HONG KONG INTERNATIONAL AIRPORT INTO A THREE-RUNWAY SYSTEM		Scale at A3 1 : 20000
Drawing No.	MCL / P132 / EIA / 4-003	Rev. D



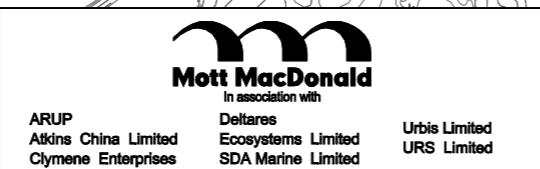
NOTE:
THIS DRAWING PRESENTS ONLY THE KEY INFRASTRUCTURE DISCUSSED IN CHAPTER 4 OF THIS EIA REPORT, AND DOES NOT REPRESENT ALL THE INFRASTRUCTURE, ROADS AND UTILITIES TO BE PROVIDED AS PART OF THE PROJECT.

LEGEND:

- PROPOSED LAND FORMATION FOOTPRINT
- PROPOSED ALIGNMENT OF SUBMARINE AVIATION FUEL PIPELINES
- PROPOSED ALIGNMENT OF SUBMARINE 11KV CABLE
- TENTATIVE ALIGNMENT OF AIRSIDE ROAD TUNNELS
- TENTATIVE ALIGNMENT OF TERMINAL 2 ROAD NETWORK
- TENTATIVE ALIGNMENT OF EXTENSION OF SOUTH PERIMETER ROAD
- INDICATIVE LAYOUT OF NEW AVIATION FUEL HYDRANT SYSTEM
- TENTATIVE CARGO AREAS ROAD IMPROVEMENT WORKS
- EXISTING SUBMARINE CABLE
- ★ PROPOSED LOCATION OF NEW / REPROVISIONED STORMWATER OUTFALLS
- PROPOSED LOCATION OF NEW / REPROVISIONED SEAWATER PUMP HOUSE
- ⊗ EXISTING SEWAGE PUMPING STATION TO BE RELOCATED AND / OR UPGRADED
- ⊕ INDICATIVE LOCATION OF NEW GREYWATER TREATMENT SYSTEM

Copyright in this document and all proprietary rights in the information it contains belong to the AA. It is a condition of the supply of this document, in whatever form, that the recipient shall hold it in confidence and shall not duplicate or otherwise reproduce it in whole or in part, nor disclose its contents without the written consent of the AA.

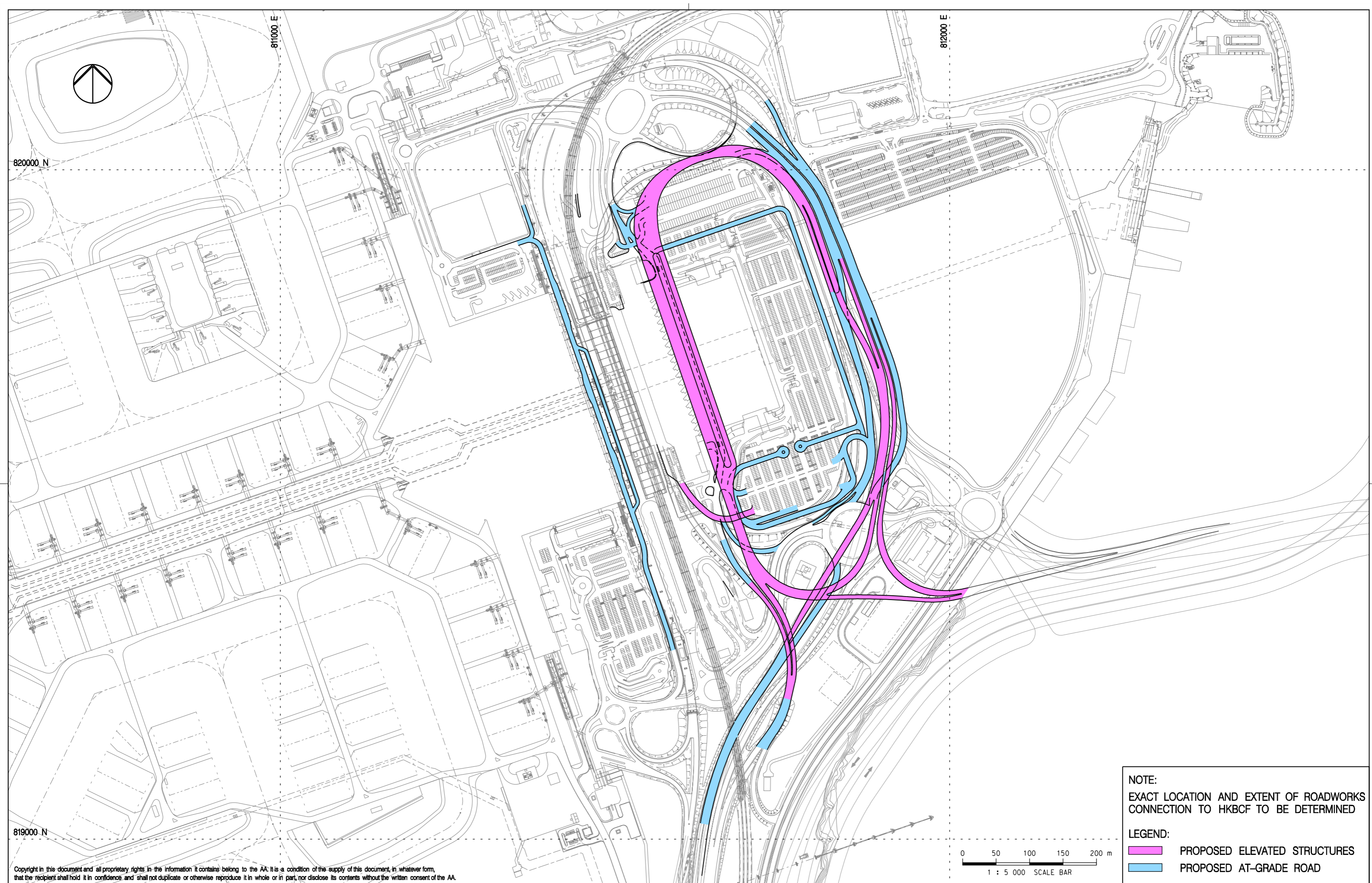
Rev.	Date	Description	Checked
A	20SEP13	FIRST ISSUE	DC
B	31OCT13	GENERAL REVISION	DC
C	28NOV13	GENERAL REVISION	DC
D	04FEB14	GENERAL REVISION	DC
E	03MAR14	GENERAL REVISION	DC





Title
KEY PROJECT COMPONENTS – ROAD NETWORK AND KEY INFRASTRUCTURE

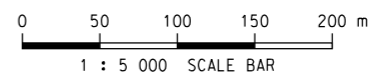
Consultant's Signatures for Approval		Date
Design	DC	20SEP13
Checkers	DC	20SEP13
Design Supervisor	EC	21MAR14
Authorised Representative	AFK	21MAR14

EXPANSION OF HONG KONG INTERNATIONAL AIRPORT INTO A THREE-RUNWAY SYSTEM	
Drawing No.	MCL / P132 / EIA / 4-004
Scale at A3	1 : 30000
Rev.	E



NOTE:
EXACT LOCATION AND EXTENT OF ROADWORKS CONNECTION TO HKBCF TO BE DETERMINED

LEGEND:
 PROPOSED ELEVATED STRUCTURES
 PROPOSED AT-GRADE ROAD



Copyright in this document and all proprietary rights in the information it contains belong to the AA. It is a condition of the supply of this document, in whatever form, that the recipient shall hold it in confidence and shall not duplicate or otherwise reproduce it in whole or in part, nor disclose its contents without the written consent of the AA.

Rev.	Date	Description	Checked
A	20SEP13	FIRST ISSUE	EC
B	31OCT13	GENERAL REVISION	EC
C	15NOV13	GENERAL REVISION	EC
D	03MAR14	GENERAL REVISION	DC



Mott MacDonald
In association with

ARUP	Deltares	Urbis Limited
Atkins China Limited	Ecosystems Limited	URS Limited
Clymene Enterprises	SDA Marine Limited	

Title
TERMINAL 2 ROAD NETWORK

Consultant's Signatures for Approval		Date
Design	DC	20SEP13
Checkers	DC	20SEP13
Design Supervisor	EC	21MAR14
Authorised Representative	AFK	21MAR14

EXPANSION OF HONG KONG INTERNATIONAL AIRPORT INTO A THREE-RUNWAY SYSTEM		Scale at A3
Drawing No.	MCL / P132 / EIA / 4-005	1 : 5000
Rev.	D	



810000 E

811000 E

818000 N

817000 N

152

較寮

Kau Lau

田心

Tin Sam

磧頭

白沙咀

Pak Sha Tsui

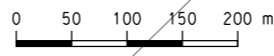
東涌小炮台

Tung Chung Battery

赤鱸角南路

CHEK LAP KOK SOUTH ROAD

東堤灣



1 : 7 000 SCALE BAR

LEGEND:

- ELEVATED STRUCTURES
- AT-GRADE ROAD

Copyright in this document and all proprietary rights in the information it contains belong to the AA. It is a condition of the supply of this document, in whatever form, that the recipient shall hold it in confidence and shall not duplicate or otherwise reproduce it in whole or in part, nor disclose its contents without the written consent of the AA.

Rev.	Date	Description	Checked
A	20SEP13	FIRST ISSUE	EC
B	25OCT13	GENERAL REVISION	EC



香港 HONG KONG
國際機場 INTERNATIONAL AIRPORT
Airport Authority 190A Tower, 1 Sky Plaza Road, Hong Kong International Airport, Lantau, Hong Kong
Tel: (852) 2368 7711 Fax: (852) 2854 0757



ARUP
Atkins China Limited
Clymene Enterprises

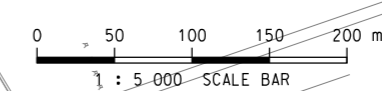
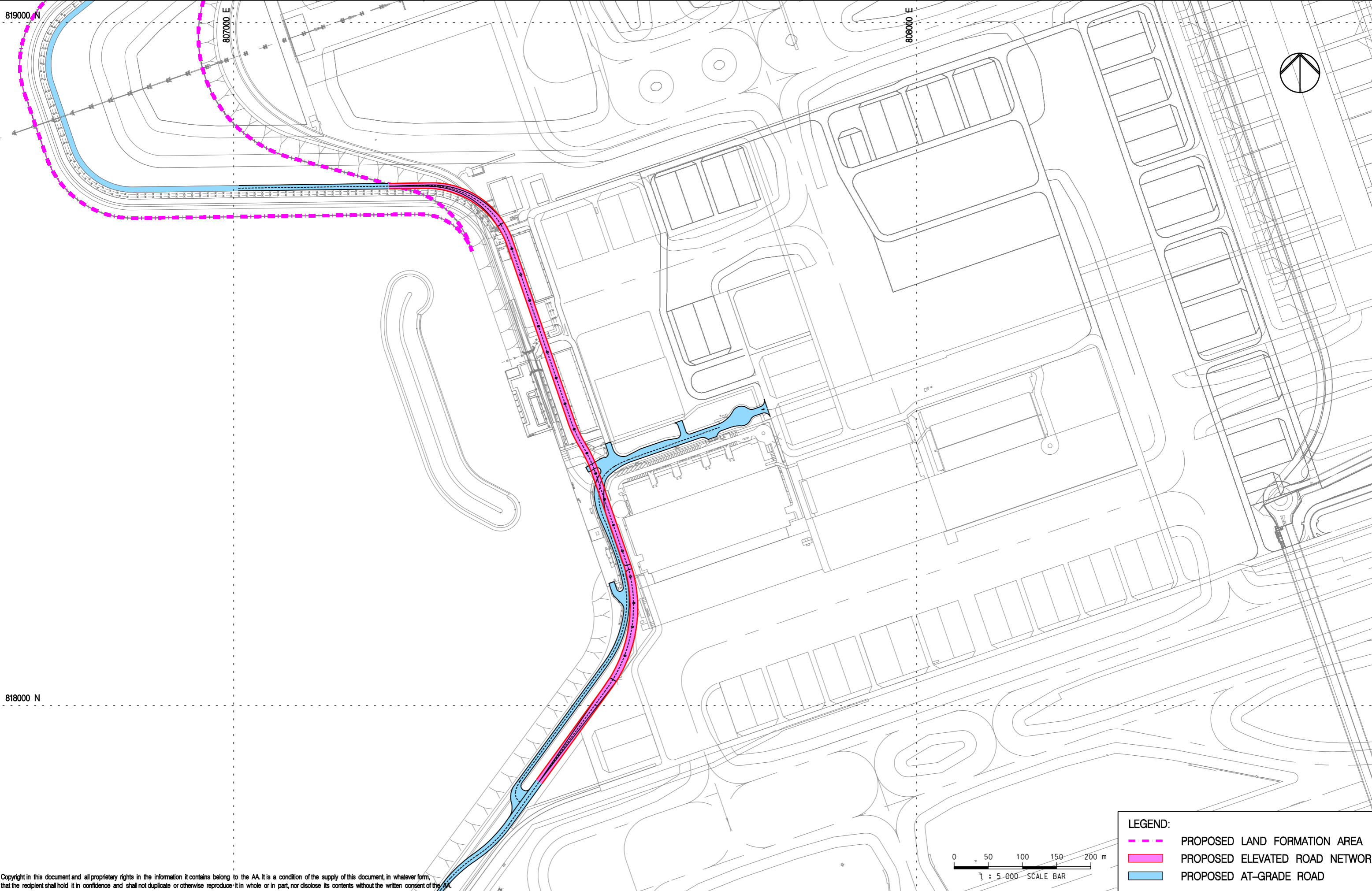
In association with
Mott MacDonald
Deltarec
Ecosystems Limited
SDA Marine Limited

Urbis Limited
URS Limited

Title
SOUTH CARGO ROAD IMPROVEMENT WORKS

Consultant's Signatures for Approval		Date
Design	DC	20SEP13
Checkers	DC	20SEP13
Design Supervisor	EC	21MAR14
Authorised Representative	AFK	21MAR14

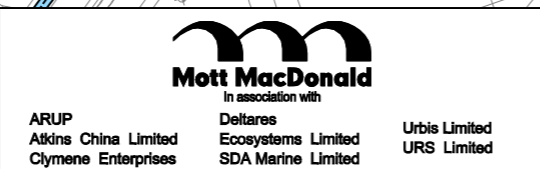
EXPANSION OF HONG KONG INTERNATIONAL AIRPORT INTO A THREE-RUNWAY SYSTEM		Scale at A3
Drawing No.	MCL / P132 / EIA / 4-006	1 : 7000
Rev.	B	



LEGEND:	
	PROPOSED LAND FORMATION AREA
	PROPOSED ELEVATED ROAD NETWORK
	PROPOSED AT-GRADE ROAD

Copyright in this document and all proprietary rights in the information it contains belong to the AA. It is a condition of the supply of this document, in whatever form, that the recipient shall hold it in confidence and shall not duplicate or otherwise reproduce it in whole or in part, nor disclose its contents without the written consent of the AA.

Rev.	Date	Description	Checked
A	20SEP13	FIRST ISSUE	EC
B	31OCT13	GENERAL REVISION	DC
C	21MAR14	GENERAL REVISION	DC



Title
EXTENSION OF SOUTH PERIMETER ROAD

Consultant's Signatures for Approval		Date
Design	DC	20SEP13
Checkers	DC	20SEP13
Design Supervisor	EC	21MAR14
Authorised Representative	AFK	21MAR14

EXPANSION OF HONG KONG INTERNATIONAL AIRPORT INTO A THREE-RUNWAY SYSTEM		Scale at A3
Drawing No.	MCL / P132 / EIA / 4-007	1 : 5000
Rev.	C	