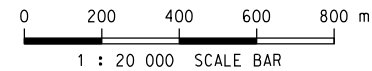
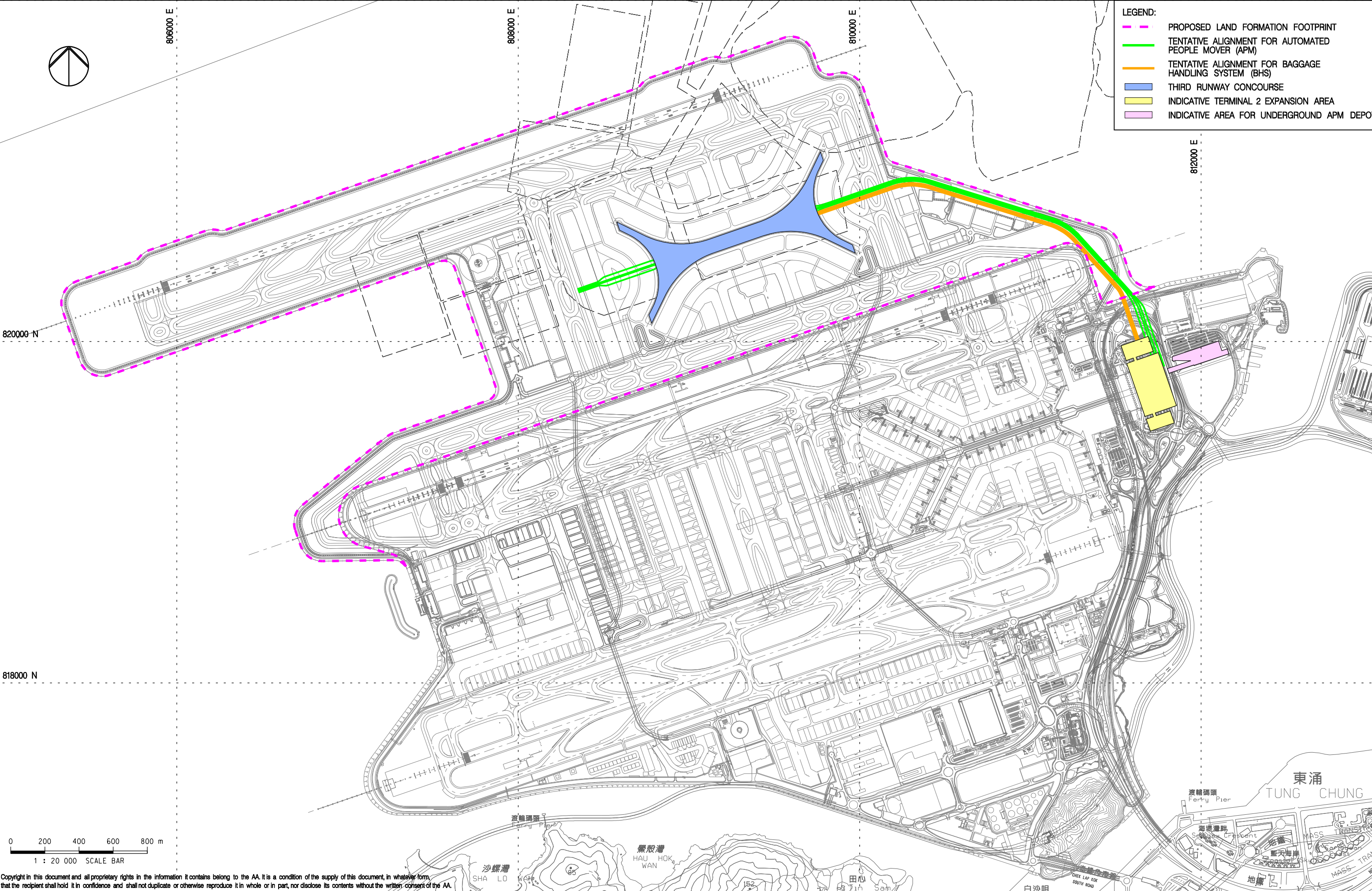




- LEGEND:
- PROPOSED LAND FORMATION FOOTPRINT
 - TENTATIVE ALIGNMENT FOR AUTOMATED PEOPLE MOVER (APM)
 - TENTATIVE ALIGNMENT FOR BAGGAGE HANDLING SYSTEM (BHS)
 - THIRD RUNWAY CONCOURSE
 - INDICATIVE TERMINAL 2 EXPANSION AREA
 - INDICATIVE AREA FOR UNDERGROUND APM DEPOT



Copyright in this document and all proprietary rights in the information it contains belong to the AA. It is a condition of the supply of this document, in whatever form, that the recipient shall hold it in confidence and shall not duplicate or otherwise reproduce it in whole or in part, nor disclose its contents without the written consent of the AA.

Rev.	Date	Description	Checked
A	20SEP13	FIRST ISSUE	DC
B	25OCT13	GENERAL REVISION	DC
C	05DEC13	GENERAL REVISION	DC
D	08JAN14	GENERAL REVISION	EY



KEY PROJECT COMPONENTS –
PASSENGER FACILITIES

Consultant's Signatures for Approval		Date
Design	DC	20SEP13
Checkers	DC	20SEP13
Design Supervisor	EC	21MAR14
Authorised Representative	AFK	21MAR14

EXPANSION OF HONG KONG INTERNATIONAL AIRPORT INTO A THREE-RUNWAY SYSTEM	
Drawing No.	Scale at A3
MCL / P132 / EIA / 4-003	1 : 20000
Rev.	D