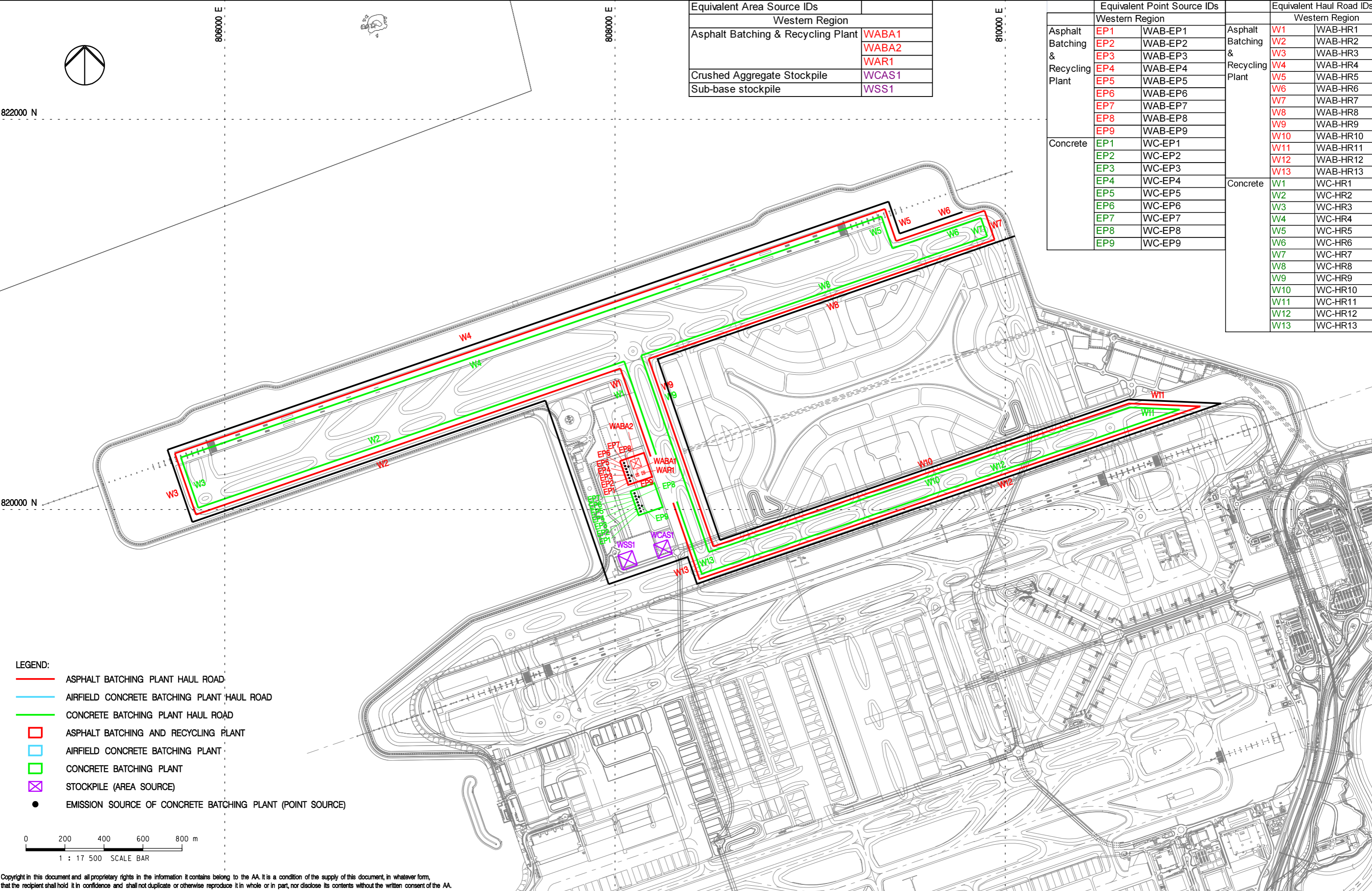
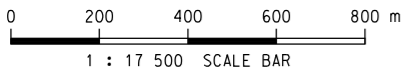


Equivalent Area Source IDs	
Western Region	
Asphalt Batching & Recycling Plant	WABA1
	WABA2
	WAR1
Crushed Aggregate Stockpile	WCAS1
Sub-base stockpile	WSS1

Equivalent Point Source IDs		Western Region	
Asphalt Batching & Recycling Plant	EP1	WAB-EP1	W1
	EP2	WAB-EP2	W2
	EP3	WAB-EP3	W3
	EP4	WAB-EP4	W4
	EP5	WAB-EP5	W5
	EP6	WAB-EP6	W6
	EP7	WAB-EP7	W7
	EP8	WAB-EP8	W8
	EP9	WAB-EP9	W9
Concrete	EP1	WC-EP1	W10
	EP2	WC-EP2	W11
	EP3	WC-EP3	W12
	EP4	WC-EP4	W13
	EP5	WC-EP5	W1
	EP6	WC-EP6	W2
	EP7	WC-EP7	W3
	EP8	WC-EP8	W4
	EP9	WC-EP9	W5
		Concrete	W6
			W7
			W8
			W9
			W10
			W11
			W12
			W13



- LEGEND:**
- ASPHALT BATCHING PLANT HAUL ROAD
 - AIRFIELD CONCRETE BATCHING PLANT HAUL ROAD
 - CONCRETE BATCHING PLANT HAUL ROAD
 - ASPHALT BATCHING AND RECYCLING PLANT
 - AIRFIELD CONCRETE BATCHING PLANT
 - CONCRETE BATCHING PLANT
 - X STOCKPILE (AREA SOURCE)
 - EMISSION SOURCE OF CONCRETE BATCHING PLANT (POINT SOURCE)



Copyright in this document and all proprietary rights in the information it contains belong to the AA. It is a condition of the supply of this document, in whatever form, that the recipient shall hold it in confidence and shall not duplicate or otherwise reproduce it in whole or in part, nor disclose its contents without the written consent of the AA.

Rev.	Date	Description	Checked
A	28JUN13	FIRST ISSUE	HC
B	12JUL13	GENERAL REVISION	HC
C	13SEP13	GENERAL REVISION	HC



Title
LOCATIONS OF POTENTIAL CONSTRUCTION DUST SOURCES FROM CONCRETE BATCHING PLANTS AND THEIR STOCKPILES AND HAUL ROADS DURING PERIOD 1 (Q1 OF 2017 TO Q3 OF 2019)

Consultant's Signatures for Approval		Date
Design	NN	28JUN13
Checkers	NN	28JUN13
Design Supervisor	EC	21MAR14
Authorised Representative	AFK	21MAR14

EXPANSION OF HONG KONG INTERNATIONAL AIRPORT INTO A THREE-RUNWAY SYSTEM
 Drawing No. **MCL / P132 / EIA / 5-2-003**
 Scale at A3 **1 : 17500**
 Rev. **C**



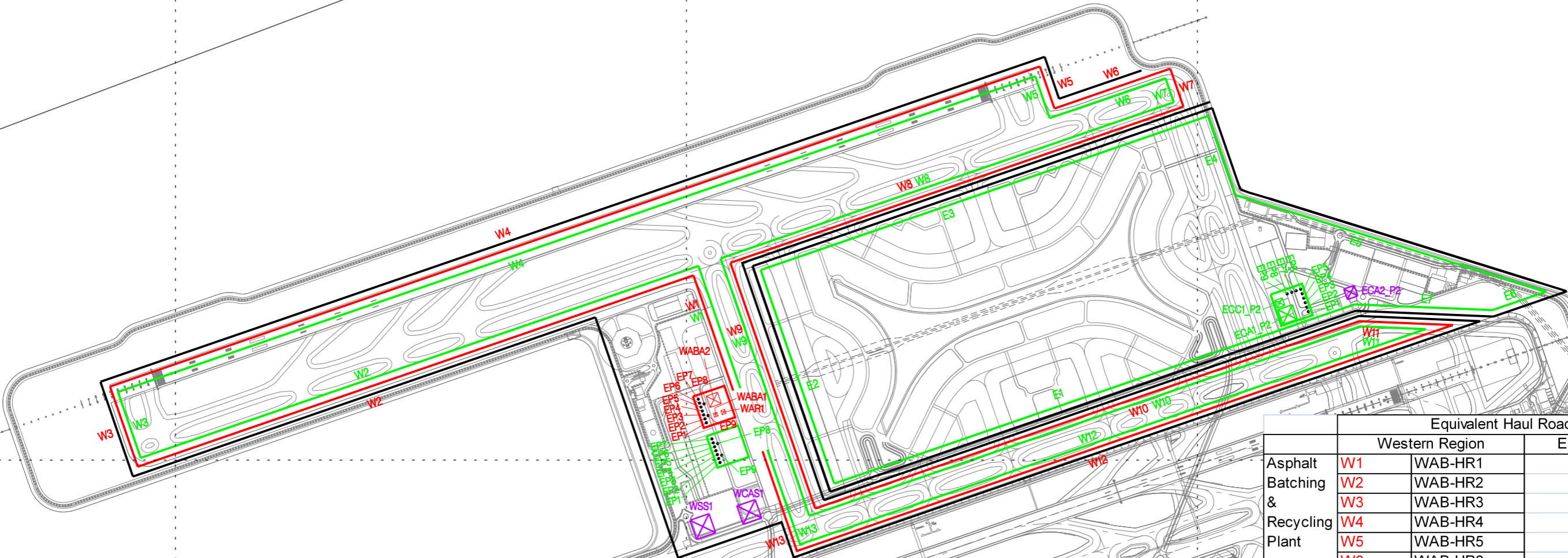
822000 N

806000 E

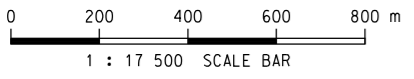
808000 E

810000 E

820000 N



- LEGEND:**
- ASPHALT BATCHING PLANT HAUL ROAD
 - AIRFIELD CONCRETE BATCHING PLANT HAUL ROAD
 - CONCRETE BATCHING PLANT HAUL ROAD
 - ASPHALT BATCHING AND RECYCLING PLANT
 - AIRFIELD CONCRETE BATCHING PLANT
 - CONCRETE BATCHING PLANT
 - STOCKPILE (AREA SOURCE)
 - EMISSION SOURCE OF CONCRETE BATCHING PLANT (POINT SOURCE)



Copyright in this document and all proprietary rights in the information it contains belong to the AA. It is a condition of the supply of this document, in whatever form, that the recipient shall hold it in confidence and shall not duplicate or otherwise reproduce it in whole or in part, nor disclose its contents without the written consent of the AA.

	Equivalent Area Source IDs	
	Western Region	Eastern Region
Asphalt Batching & Recycling Plant	WABA1 WABA2 WAR1	---
Concrete	---	ECC1-P2 ECA1-P2
Crushed Aggregate Stockpile	WCA1	ECA2-P2
Sub-base stockpile	WSS1	---

	Equivalent Point Source IDs			
	Western Region		Eastern Region	
Asphalt Batching & Recycling Plant	EP1	WAB-EP1		
	EP2	WAB-EP2		
	EP3	WAB-EP3		
	EP4	WAB-EP4		
	EP5	WAB-EP5		
	EP6	WAB-EP6		
	EP7	WAB-EP7		
	EP8	WAB-EP8		
	EP9	WAB-EP9		
Concrete	EP1	WC-EP1	EP1	EC-P2-EP1
	EP2	WC-EP2	EP2	EC-P2-EP2
	EP3	WC-EP3	EP3	EC-P2-EP3
	EP4	WC-EP4	EP4	EC-P2-EP4
	EP5	WC-EP5	EP5	EC-P2-EP5
	EP6	WC-EP6	EP6	EC-P2-EP6
	EP7	WC-EP7	EP7	EC-P2-EP7
	EP8	WC-EP8	EP8	EC-P2-EP8
	EP9	WC-EP9	EP9	EC-P2-EP9

	Equivalent Haul Road IDs			
	Western Region		Eastern Region	
Asphalt Batching & Recycling Plant	W1	WAB-HR1		
	W2	WAB-HR2		
	W3	WAB-HR3		
	W4	WAB-HR4		
	W5	WAB-HR5		
	W6	WAB-HR6		
	W7	WAB-HR7		
	W8	WAB-HR8		
	W9	WAB-HR9		
	W10	WAB-HR10		
	W11	WAB-HR11		
	W12	WAB-HR12		
	W13	WAB-HR13		
Concrete	W1	WC-HR1	E1	EC-P2-HR1
	W2	WC-HR2	E2	EC-P2-HR2
	W3	WC-HR3	E3	EC-P2-HR3
	W4	WC-HR4	E4	EC-P2-HR4
	W5	WC-HR5	E5	EC-P2-HR5
	W6	WC-HR6	E6	EC-P2-HR6
	W7	WC-HR7	E7	EC-P2-HR7
	W8	WC-HR8		
	W9	WC-HR9		
	W10	WC-HR10		
	W11	WC-HR11		
	W12	WC-HR12		
	W13	WC-HR13		

Rev.	Date	Description	Checked
A	28JUN13	FIRST ISSUE	HC
B	12JUL13	GENERAL REVISION	HC
C	13SEP13	GENERAL REVISION	HC
D	21MAR14	GENERAL REVISION	HC



Title
LOCATIONS OF POTENTIAL CONSTRUCTION DUST SOURCES FROM CONCRETE BATCHING PLANTS AND THEIR STOCKPILES AND HAUL ROADS DURING PERIOD 2 (Q4 OF 2019 TO Q3 OF 2020)

Consultant's Signatures for Approval		Date
Design	NN	28JUN13
Checkers	NN	28JUN13
Design Supervisor	EC	21MAR14
Authorised Representative	AFK	21MAR14

EXPANSION OF HONG KONG INTERNATIONAL AIRPORT INTO A THREE-RUNWAY SYSTEM
Drawing No. MCL / P132 / EIA / 5-2-004
Scale at A3 1 : 17500
Rev. D



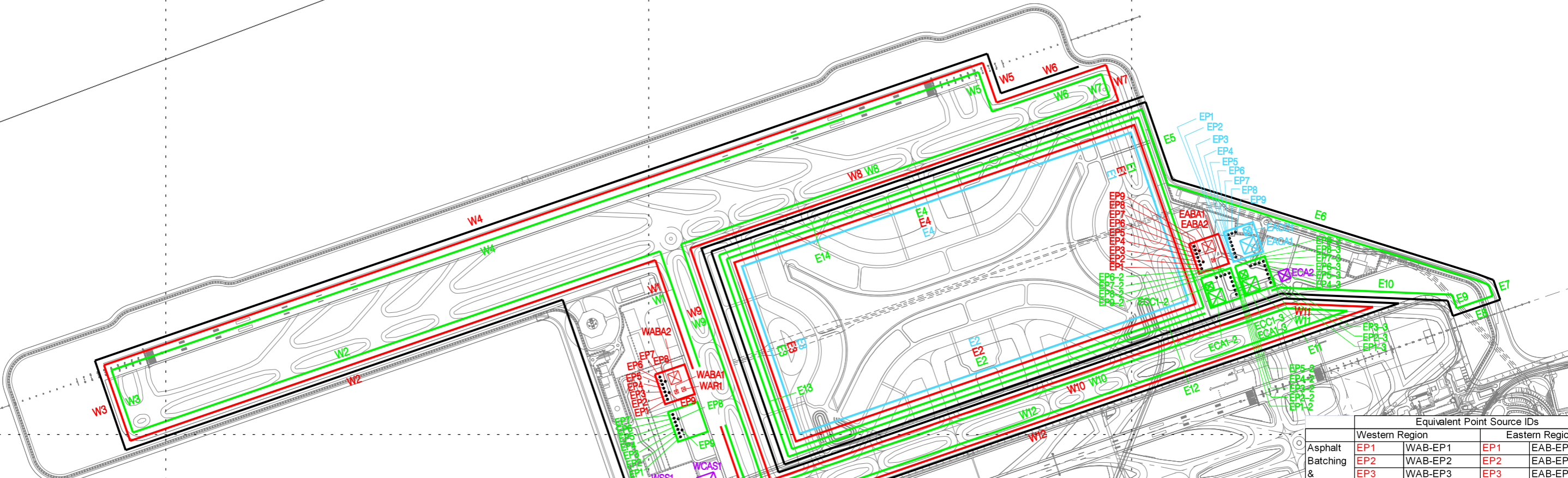
822000 N

806000 E

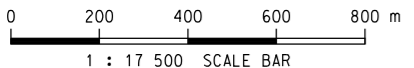
808000 E

810000 E

820000 N



- LEGEND:**
- ASPHALT BATCHING PLANT HAUL ROAD
 - AIRFIELD CONCRETE BATCHING PLANT HAUL ROAD
 - CONCRETE BATCHING PLANT HAUL ROAD
 - ASPHALT BATCHING AND RECYCLING PLANT
 - AIRFIELD CONCRETE BATCHING PLANT
 - CONCRETE BATCHING PLANT
 - STOCKPILE (AREA SOURCE)
 - EMISSION SOURCE OF CONCRETE BATCHING PLANT (POINT SOURCE)



Copyright in this document and all proprietary rights in the information it contains belong to the AA. It is a condition of the supply of this document, in whatever form, that the recipient shall hold it in confidence and shall not duplicate or otherwise reproduce it in whole or in part, nor disclose its contents without the written consent of the AA.

	Equivalent Haul Road IDs				Equivalent Point Source IDs			
	Western Region		Eastern Region		Western Region		Eastern Region	
Asphalt Batching & Recycling Plant	W1	WAB-HR1	E1	EAB-HR1	EP1	WAB-EP1	EP1	EAB-EP1
	W2	WAB-HR2	E2	EAB-HR2	EP2	WAB-EP2	EP2	EAB-EP2
	W3	WAB-HR3	E3	EAB-HR3	EP3	WAB-EP3	EP3	EAB-EP3
	W4	WAB-HR4	E4	EAB-HR4	EP4	WAB-EP4	EP4	EAB-EP4
	W5	WAB-HR5			EP5	WAB-EP5	EP5	EAB-EP5
	W6	WAB-HR6			EP6	WAB-EP6	EP6	EAB-EP6
	W7	WAB-HR7			EP7	WAB-EP7	EP7	EAB-EP7
	W8	WAB-HR8			EP8	WAB-EP8	EP8	EAB-EP8
	W9	WAB-HR9			EP9	WAB-EP9	EP9	EAB-EP9
Airfield Concrete			E1	EAC-HR1			EP1	EC-EP1
			E2	EAC-HR2			EP2	EC-EP2
			E3	EAC-HR3			EP3	EC-EP3
			E4	EAC-HR4			EP4	EC-EP4
			E5	EC-HR5			EP5	EC-EP5
			E6	EC-HR6			EP6	EC-EP6
			E7	EC-HR7			EP7	EC-EP7
			E8	EC-HR8			EP8	EC-EP8
			E9	EC-HR9			EP9	EC-EP9
Concrete	W1	WC-HR1	E1	EC-HR1	EP1	WC-EP1	EP1_2	EC-2-EP1
	W2	WC-HR2	E2	EC-HR2	EP2	WC-EP2	EP2_2	EC-2-EP2
	W3	WC-HR3	E3	EC-HR3	EP3	WC-EP3	EP3_2	EC-2-EP3
	W4	WC-HR4	E4	EC-HR4	EP4	WC-EP4	EP4_2	EC-2-EP4
	W5	WC-HR5	E5	EC-HR5	EP5	WC-EP5	EP5_2	EC-2-EP5
	W6	WC-HR6	E6	EC-HR6			EP1_3	EC-3-EP1
	W7	WC-HR7	E7	EC-HR7			EP2_3	EC-3-EP2
	W8	WC-HR8	E8	EC-HR8			EP3_3	EC-3-EP3
	W9	WC-HR9	E9	EC-HR9			EP4_3	EC-3-EP4
	W10	WC-HR10	E10	EC-HR10			EP5_3	EC-3-EP5
	W11	WC-HR11	E11	EC-HR11			EP6_3	EC-3-EP6
	W12	WC-HR12	E12	EC-HR12			EP7_3	EC-3-EP7
	W13	WC-HR13	E13	EC-HR13			EP8_3	EC-3-EP8
		E14	EC-HR14			EP9_3	EC-3-EP9	

	Equivalent Area Source IDs	
	Western Region	Eastern Region
Asphalt Batching & Recycling Plant	WABA1	EABA1
	WABA2	EABA2
	WAR1	
Airfield Concrete		EACC1
		EACA1
Concrete		ECC1_2
		ECA1_2
		ECC1_3
		ECA1_3
Crushed Aggregate Stockpile	WCAS1	ECA2
Sub-base stockpile	WSS1	

Rev.	Date	Description	Checked
A	28JUN13	FIRST ISSUE	HC
B	12JUL13	GENERAL REVISION	HC
C	13SEP13	GENERAL REVISION	HC
D	21MAR14	GENERAL REVISION	HC



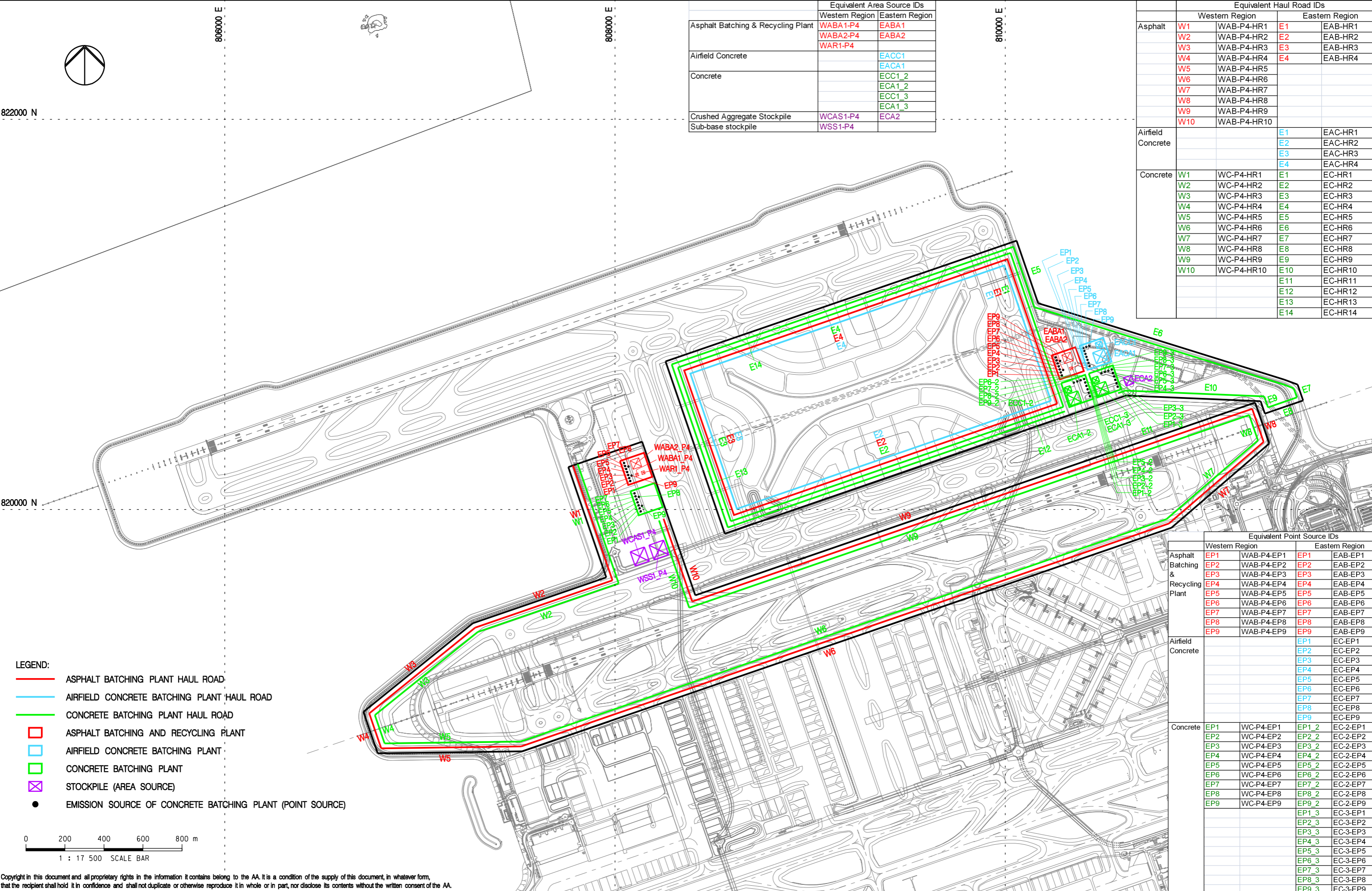
Title
 LOCATIONS OF POTENTIAL CONSTRUCTION DUST SOURCES FROM CONCRETE BATCHING PLANTS AND THEIR STOCKPILES AND HAUL ROADS DURING PERIOD 3 (Q4 OF 2020 TO Q4 OF 2021)

Consultant's Signatures for Approval		Date
Design	NN	28JUN13
Checkers	NN	28JUN13
Design Supervisor	EC	21MAR14
Authorised Representative	AFK	21MAR14

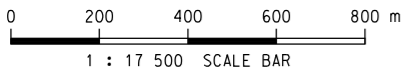
EXPANSION OF HONG KONG INTERNATIONAL AIRPORT INTO A THREE-RUNWAY SYSTEM
 Drawing No. MCL / P132 / EIA / 5-2-005
 Scale at A3 1 : 17500
 Rev. D

	Equivalent Area Source IDs	
	Western Region	Eastern Region
Asphalt Batching & Recycling Plant	WABA1-P4	EABA1
	WABA2-P4	EABA2
	WAR1-P4	
Airfield Concrete		EACC1
		EACA1
		ECC1_2
Concrete		ECA1_2
		ECC1_3
		ECA1_3
		ECA1_3
Crushed Aggregate Stockpile	WCAS1-P4	ECA2
Sub-base stockpile	WSS1-P4	

	Equivalent Haul Road IDs			
	Western Region		Eastern Region	
Asphalt	W1	WAB-P4-HR1	E1	EAB-HR1
	W2	WAB-P4-HR2	E2	EAB-HR2
	W3	WAB-P4-HR3	E3	EAB-HR3
	W4	WAB-P4-HR4	E4	EAB-HR4
	W5	WAB-P4-HR5		
	W6	WAB-P4-HR6		
	W7	WAB-P4-HR7		
	W8	WAB-P4-HR8		
	W9	WAB-P4-HR9		
	W10	WAB-P4-HR10		
Airfield Concrete			E1	EAC-HR1
			E2	EAC-HR2
			E3	EAC-HR3
			E4	EAC-HR4
Concrete	W1	WC-P4-HR1	E1	EC-HR1
	W2	WC-P4-HR2	E2	EC-HR2
	W3	WC-P4-HR3	E3	EC-HR3
	W4	WC-P4-HR4	E4	EC-HR4
	W5	WC-P4-HR5	E5	EC-HR5
	W6	WC-P4-HR6	E6	EC-HR6
	W7	WC-P4-HR7	E7	EC-HR7
	W8	WC-P4-HR8	E8	EC-HR8
	W9	WC-P4-HR9	E9	EC-HR9
	W10	WC-P4-HR10	E10	EC-HR10
			E11	EC-HR11
			E12	EC-HR12
			E13	EC-HR13
			E14	EC-HR14



- LEGEND:**
- ASPHALT BATCHING PLANT HAUL ROAD
 - AIRFIELD CONCRETE BATCHING PLANT HAUL ROAD
 - CONCRETE BATCHING PLANT HAUL ROAD
 - ASPHALT BATCHING AND RECYCLING PLANT
 - AIRFIELD CONCRETE BATCHING PLANT
 - CONCRETE BATCHING PLANT
 - STOCKPILE (AREA SOURCE)
 - EMISSION SOURCE OF CONCRETE BATCHING PLANT (POINT SOURCE)



	Equivalent Point Source IDs			
	Western Region		Eastern Region	
Asphalt Batching & Recycling Plant	EP1	WAB-P4-EP1	EP1	EAB-EP1
	EP2	WAB-P4-EP2	EP2	EAB-EP2
	EP3	WAB-P4-EP3	EP3	EAB-EP3
	EP4	WAB-P4-EP4	EP4	EAB-EP4
	EP5	WAB-P4-EP5	EP5	EAB-EP5
	EP6	WAB-P4-EP6	EP6	EAB-EP6
	EP7	WAB-P4-EP7	EP7	EAB-EP7
	EP8	WAB-P4-EP8	EP8	EAB-EP8
	EP9	WAB-P4-EP9	EP9	EAB-EP9
Airfield Concrete			EP1	EC-EP1
			EP2	EC-EP2
			EP3	EC-EP3
			EP4	EC-EP4
			EP5	EC-EP5
			EP6	EC-EP6
			EP7	EC-EP7
			EP8	EC-EP8
			EP9	EC-EP9
Concrete	EP1	WC-P4-EP1	EP1_2	EC-2-EP1
	EP2	WC-P4-EP2	EP2_2	EC-2-EP2
	EP3	WC-P4-EP3	EP3_2	EC-2-EP3
	EP4	WC-P4-EP4	EP4_2	EC-2-EP4
	EP5	WC-P4-EP5	EP5_2	EC-2-EP5
	EP6	WC-P4-EP6	EP6_2	EC-2-EP6
	EP7	WC-P4-EP7	EP7_2	EC-2-EP7
	EP8	WC-P4-EP8	EP8_2	EC-2-EP8
	EP9	WC-P4-EP9	EP9_2	EC-2-EP9
		EP1_3	EC-3-EP1	
		EP2_3	EC-3-EP2	
		EP3_3	EC-3-EP3	
		EP4_3	EC-3-EP4	
		EP5_3	EC-3-EP5	
		EP6_3	EC-3-EP6	
		EP7_3	EC-3-EP7	
		EP8_3	EC-3-EP8	
		EP9_3	EC-3-EP9	

Copyright in this document and all proprietary rights in the information it contains belong to the AA. It is a condition of the supply of this document, in whatever form, that the recipient shall hold it in confidence and shall not duplicate or otherwise reproduce it in whole or in part, nor disclose its contents without the written consent of the AA.

Rev.	Date	Description	Checked
A	13SEP13	FIRST ISSUE	HC
B	21MAR14	GENERAL REVISION	HC



Title
LOCATIONS OF POTENTIAL CONSTRUCTION DUST SOURCES FROM CONCRETE BATCHING PLANTS AND THEIR STOCKPILES AND HAUL ROADS DURING PERIOD 4 (Q1 OF 2022 TO Q4 OF 2022)

Consultant's Signatures for Approval		Date
Design	NN	13SEP13
Checkers	NN	13SEP13
Design Supervisor	EC	21MAR14
Authorised Representative	AFK	21MAR14

EXPANSION OF HONG KONG INTERNATIONAL AIRPORT INTO A THREE-RUNWAY SYSTEM
 Drawing No. **MCL / P132 / EIA / 5-2-006**
 Scale at A3 **1 : 17500**
 Rev. **B**



LEGEND:
 TEMPORARY BARGING POINT

Temporary Barging Point ID	Construction Programme
TBP1	Q1 2017 - Q4 2022
TBP2	Q1 2017 - Q2 2023
TBP3	Q1 2017 - Q4 2019
TBP4	Q2 2017 - Q2 2023
TBP5	Q2 2017 - Q4 2019
TBP6	Q1 2018 - Q4 2019

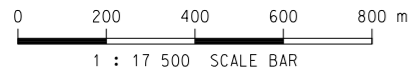
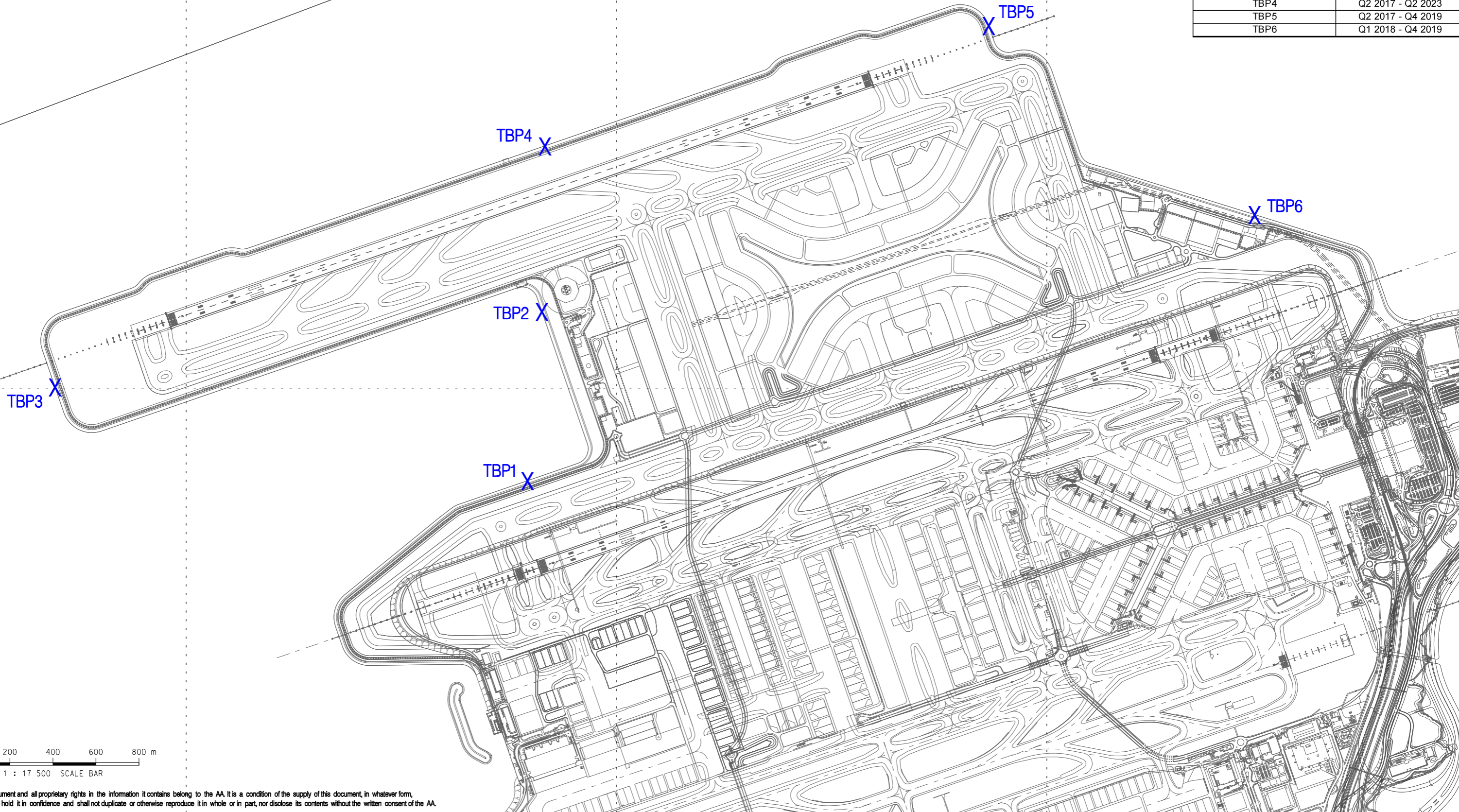
82000 N

806000 E

808000 E

810000 E

82000 N



Copyright in this document and all proprietary rights in the information it contains belong to the AA. It is a condition of the supply of this document, in whatever form, that the recipient shall hold it in confidence and shall not duplicate or otherwise reproduce it in whole or in part, nor disclose its contents without the written consent of the AA.

Rev.	Date	Description	Checked
A	13SEP13	FIRST ISSUE	EC



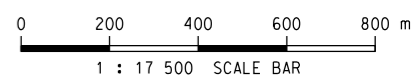
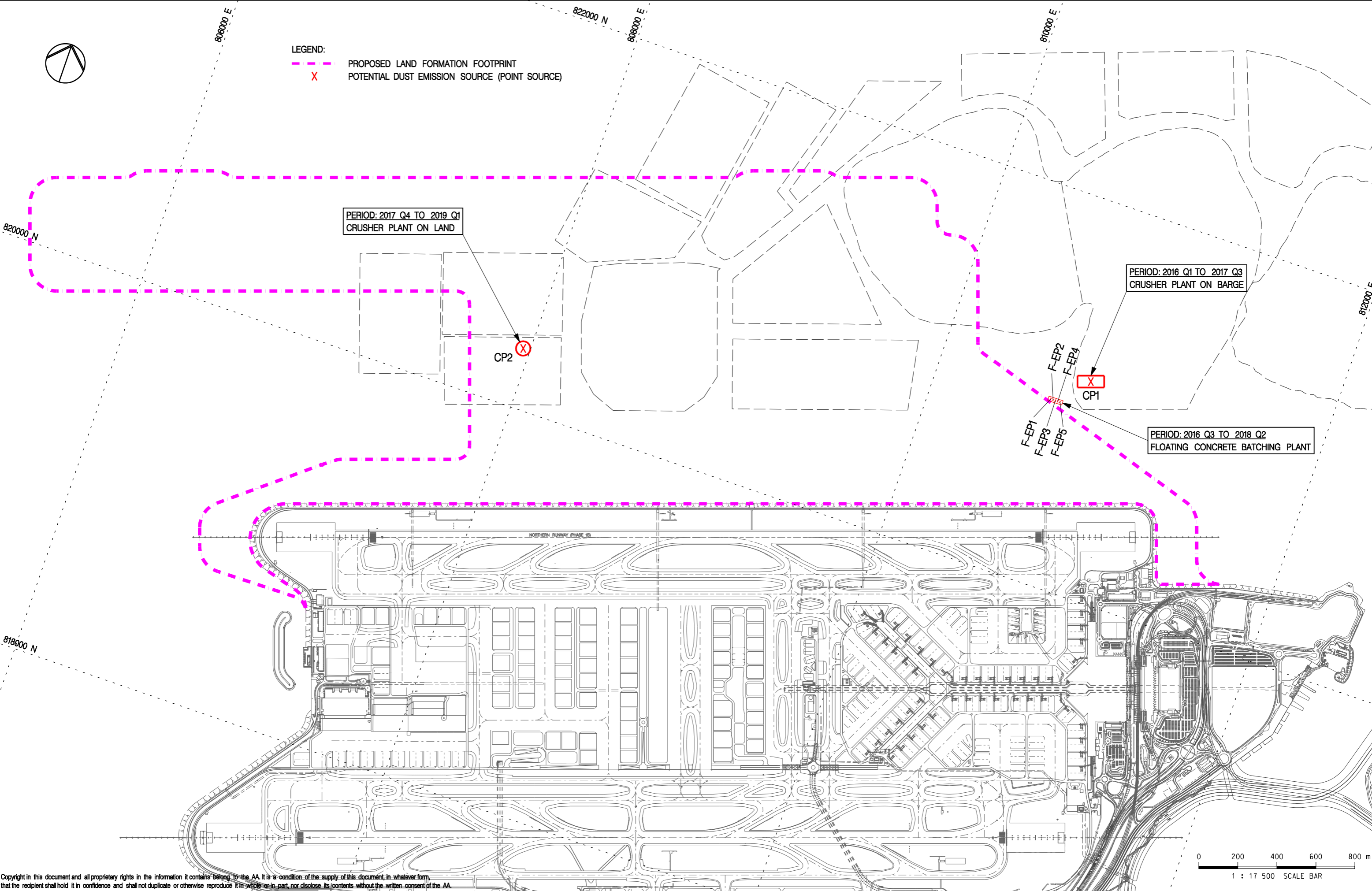
Title
LOCATIONS OF POTENTIAL CONSTRUCTION DUST SOURCES FROM TEMPORARY BARGING POINTS

Consultant's Signatures for Approval		Date
Design	NN	13SEP13
Checkers	NN	13SEP13
Design Supervisor	EC	21MAR14
Authorised Representative	AFK	21MAR14

EXPANSION OF HONG KONG INTERNATIONAL AIRPORT INTO A THREE-RUNWAY SYSTEM		Scale at A3
Drawing No.	MCL / P132 / EIA / 5-2-007	1 : 17500
Rev.	A	

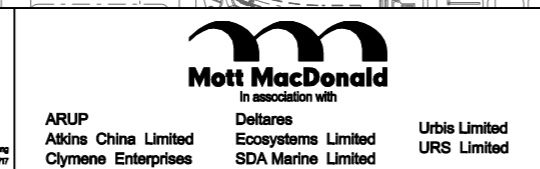


LEGEND:
 - - - - - PROPOSED LAND FORMATION FOOTPRINT
 X POTENTIAL DUST EMISSION SOURCE (POINT SOURCE)



Copyright in this document and all proprietary rights in the information it contains belong to the AA. It is a condition of the supply of this document, in whatever form, that the recipient shall hold it in confidence and shall not duplicate or otherwise reproduce it in whole or in part, nor disclose its contents without the written consent of the AA.

Rev.	Date	Description	Checked
A	13SEP13	FIRST ISSUE	MCD
B	13DEC13	GENERAL REVISION	NN



Title
LOCATION OF POTENTIAL CRUSHING PLANT AND FLOATING CONCRETE BATCHING PLANT

Consultant's Signatures for Approval		Date
Design	MCD	13SEP13
Checkers	MCD	13SEP13
Design Supervisor	EC	21MAR14
Authorised Representative	AFK	21MAR14

EXPANSION OF HONG KONG INTERNATIONAL AIRPORT INTO A THREE-RUNWAY SYSTEM		Scale at A3
Drawing No.	MCL / P132 / EIA / 5-2-008	1 : 17500
Rev.	B	