



822000 N

806000 E

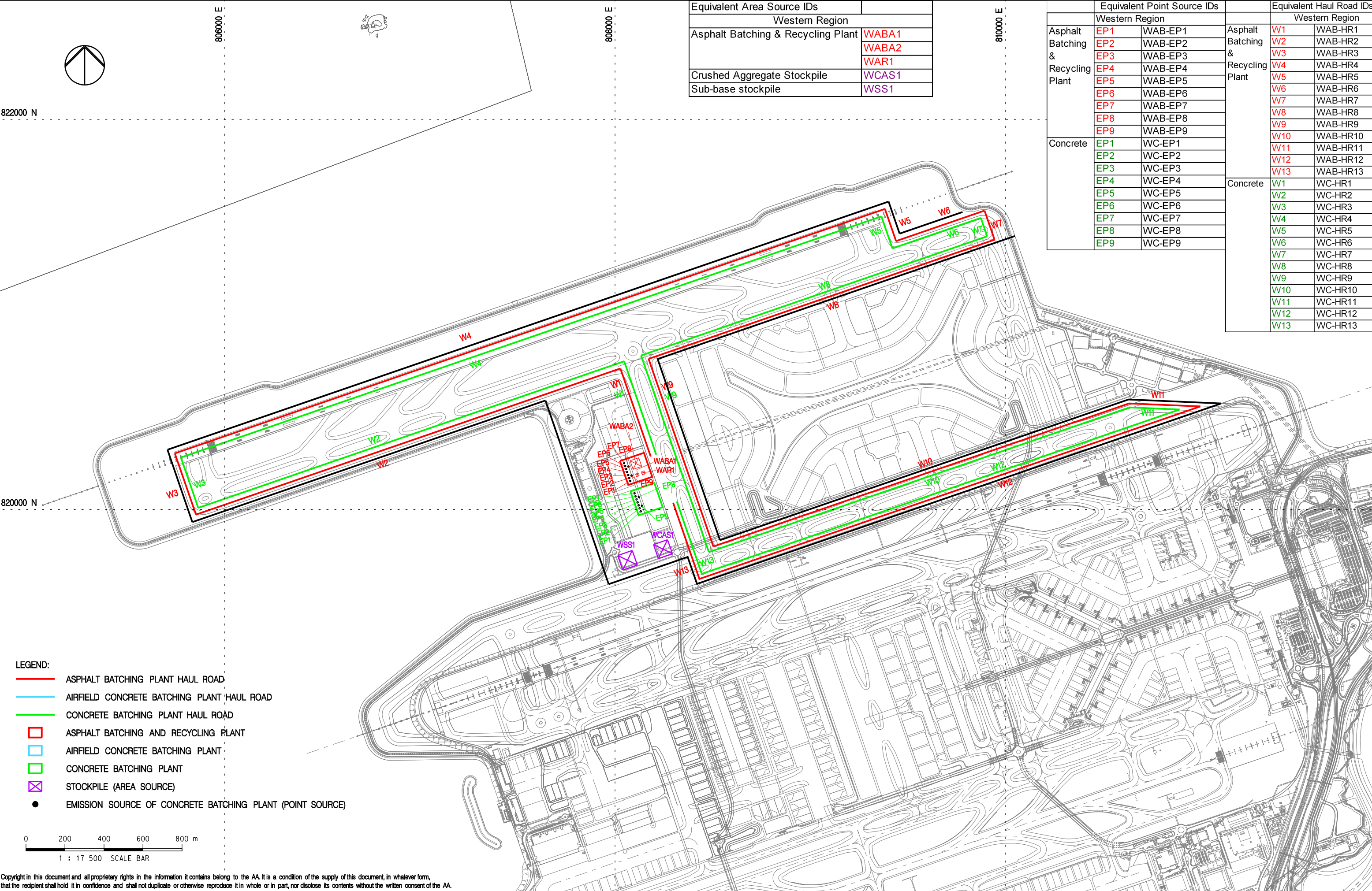
808000 E

810000 E

Equivalent Area Source IDs	
Western Region	
Asphalt Batching & Recycling Plant	WABA1
	WABA2
	WAR1
Crushed Aggregate Stockpile	WCAS1
Sub-base stockpile	WSS1

Equivalent Point Source IDs		
Western Region		
Asphalt Batching & Recycling Plant	EP1	WAB-EP1
	EP2	WAB-EP2
	EP3	WAB-EP3
	EP4	WAB-EP4
	EP5	WAB-EP5
	EP6	WAB-EP6
	EP7	WAB-EP7
	EP8	WAB-EP8
	EP9	WAB-EP9
Concrete	EP1	WC-EP1
	EP2	WC-EP2
	EP3	WC-EP3
	EP4	WC-EP4
	EP5	WC-EP5
	EP6	WC-EP6
	EP7	WC-EP7
	EP8	WC-EP8
	EP9	WC-EP9

Equivalent Haul Road IDs		
Western Region		
Asphalt Batching & Recycling Plant	W1	WAB-HR1
	W2	WAB-HR2
	W3	WAB-HR3
	W4	WAB-HR4
	W5	WAB-HR5
	W6	WAB-HR6
	W7	WAB-HR7
	W8	WAB-HR8
	W9	WAB-HR9
	W10	WAB-HR10
	W11	WAB-HR11
	W12	WAB-HR12
	W13	WAB-HR13
Concrete	W1	WC-HR1
	W2	WC-HR2
	W3	WC-HR3
	W4	WC-HR4
	W5	WC-HR5
	W6	WC-HR6
	W7	WC-HR7
	W8	WC-HR8
	W9	WC-HR9
	W10	WC-HR10
	W11	WC-HR11
	W12	WC-HR12
	W13	WC-HR13



LEGEND:

ASPHALT BATCHING PLANT HAUL ROAD

AIRFIELD CONCRETE BATCHING PLANT HAUL ROAD

CONCRETE BATCHING PLANT HAUL ROAD

ASPHALT BATCHING AND RECYCLING PLANT

AIRFIELD CONCRETE BATCHING PLANT

CONCRETE BATCHING PLANT

STOCKPILE (AREA SOURCE)


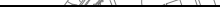

EMISSION SOURCE OF CONCRETE BATCHING PLANT (POINT SOURCE)

0200400600800

1 : 17 500

SCALE BAR

Copyright in this document and all proprietary rights in the information it contains belong to the AA. It is a condition of the supply of this document, in whatever form, that the recipient shall hold it in confidence and shall not duplicate or otherwise reproduce it in whole or in part, nor disclose its contents without the written consent of the AA.

Rev.	Date	Description	Checked	 香港國際機場 HONG KONG INTERNATIONAL AIRPORT Airport Authority HQA Tower, 1 Sky Plaza Road, Hong Kong International Airport, Lantau, Hong Kong Tel : (852) 2968 7711	 In association with ARUP Atkins China Limited Clymene Enterprises	 Deltarec Ecosystems Limited SDA Marine Limited	Urbis Limited URS Limited	Title LOCATIONS OF POTENTIAL CONSTRUCTION DUST SOURCES FROM CONCRETE BATCHING PLANTS AND THEIR STOCKPILES AND HAUL ROADS DURING PERIOD 1 (Q1 OF 2017 TO Q3 OF 2019)	Consultant's Signatures for Approval		Date	EXPANSION OF HONG KONG INTERNATIONAL AIRPORT INTO A THREE-RUNWAY SYSTEM	
A	28JUN13	FIRST ISSUE	HC						Design	NN	28JUN13	Drawing No. MCL / P132 / EIA / 5-2-003	Scale at A3 1 : 1750
B	12JUL13	GENERAL REVISION	HC						Checkers	NN	28JUN13		
C	13SEP13	GENERAL REVISION	HC						Design Supervisor	EC	21MAR14		
									Authorised Representative	AFK	21MAR14		
											Rev. C		