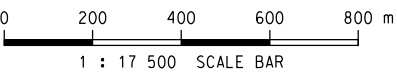
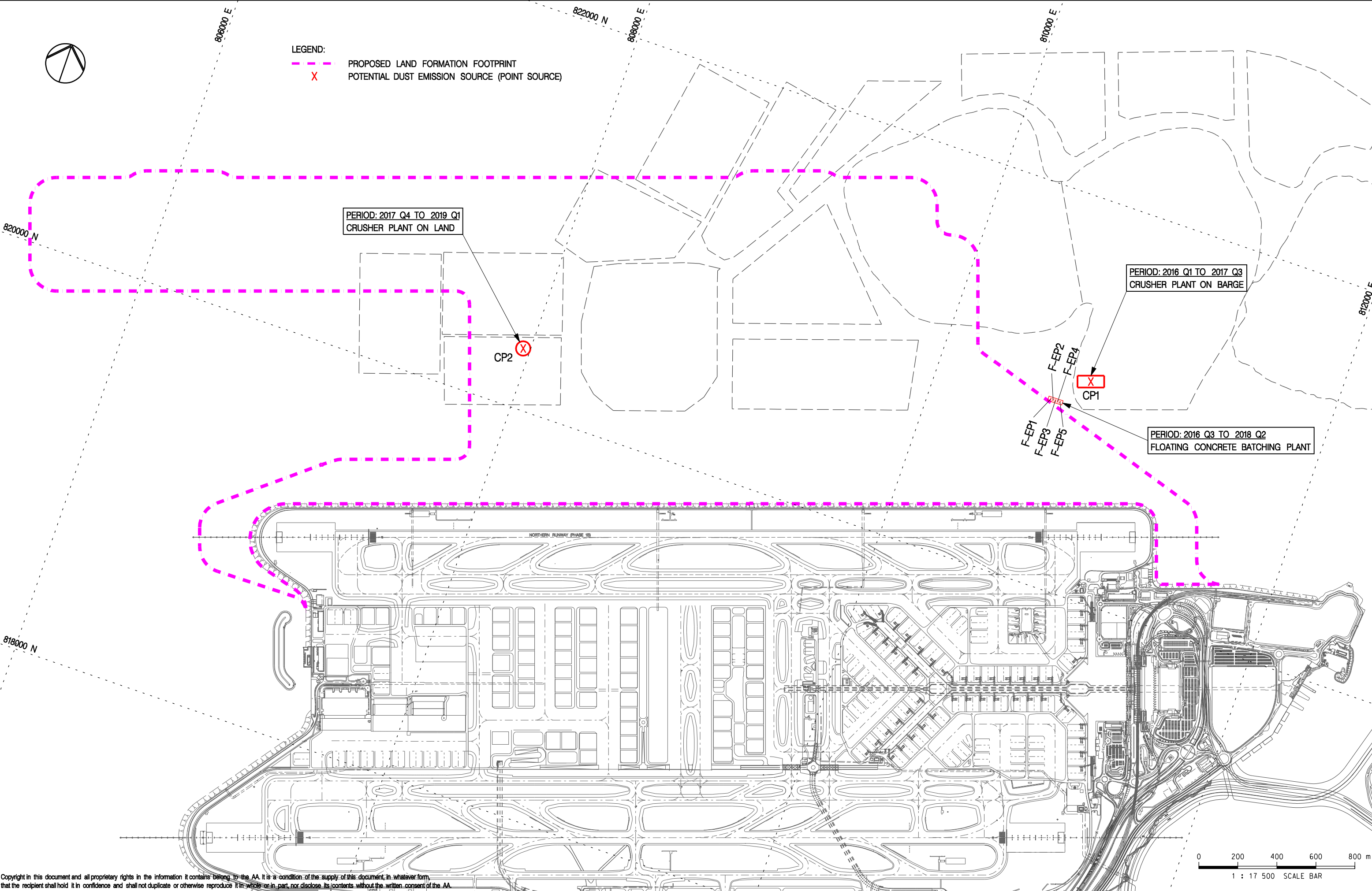




LEGEND:  
- - - - - PROPOSED LAND FORMATION FOOTPRINT  
X POTENTIAL DUST EMISSION SOURCE (POINT SOURCE)



Copyright in this document and all proprietary rights in the information it contains belong to the AA. It is a condition of the supply of this document, in whatever form, that the recipient shall hold it in confidence and shall not duplicate or otherwise reproduce it in whole or in part, nor disclose its contents without the written consent of the AA.

Rev.	Date	Description	Checked
A	13SEP13	FIRST ISSUE	MCD
B	13DEC13	GENERAL REVISION	NN



香港 HONG KONG  
國際機場 INTERNATIONAL AIRPORT

Airport Authority 190A Tower, 1 Sky Plaza Road, Hong Kong International Airport, Lantau, Hong Kong  
Tel : (852) 2988 7711 Fax : (852) 2824 0757



**Mott MacDonald**  
In association with

ARUP  
Atkins China Limited  
Clymene Enterprises

Deltarec  
Ecosystems Limited  
SDA Marine Limited

Urbis Limited  
URS Limited

Title

LOCATION OF POTENTIAL CRUSHING PLANT  
AND  
FLOATING CONCRETE BATCHING PLANT

Consultant's Signatures for Approval		Date
Design	MCD	13SEP13
Checkers	MCD	13SEP13
Design Supervisor	EC	21MAR14
Authorised Representative	AFK	21MAR14

EXPANSION OF HONG KONG INTERNATIONAL AIRPORT INTO A THREE-RUNWAY SYSTEM	
Drawing No.	Scale at A3 1 : 17500
MCL / P132 / EIA / 5-2-008	
Rev.	B