



820000 N

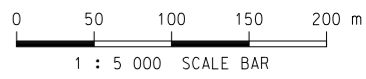
811000 E

812000 E

LEGEND:

- PROPOSED ELEVATED ROAD NETWORK
- PROPOSED AT-GRADE ROAD
- EXISTING T2 BUILDING
- INDICATIVE T2 EXPANSION AREA
- OTHER AIRPORT FACILITIES RELATED WORKS
- TEMPORARY CAR PARK IN NCD
- TEMPORARY ROAD DIVERSION
- AFFECTED PORTION OF EXISTING SKY CITY CAR PARK
- AFFECTED PORTION OF EXISTING SKYPIER
- AFFECTED PORTION OF EXISTING MCT
- AFFECTED PORTION OF EXISTING GOLF COURSE
- EXISTING SKYPIER
- INDICATIVE NCD AREA FOR PHASE I
- INDICATIVE NCD AREA FOR PHASE II
- REPROVISIONED SKY CITY ROAD EAST (INDICATIVE)
- INTERIM MAINTENANCE FACILITY (INDICATIVE)
- POTENTIAL DUST EMISSION SOURCE (AREA SOURCE)
- POTENTIAL DUST EMISSION SOURCE (LINE SOURCE)

Copyright in this document and all proprietary rights in the information it contains belong to the AA. It is a condition of the supply of this document, in whatever form, that the recipient shall hold it in confidence and shall not duplicate or otherwise reproduce it in whole or in part, nor disclose its contents without the written consent of the AA.



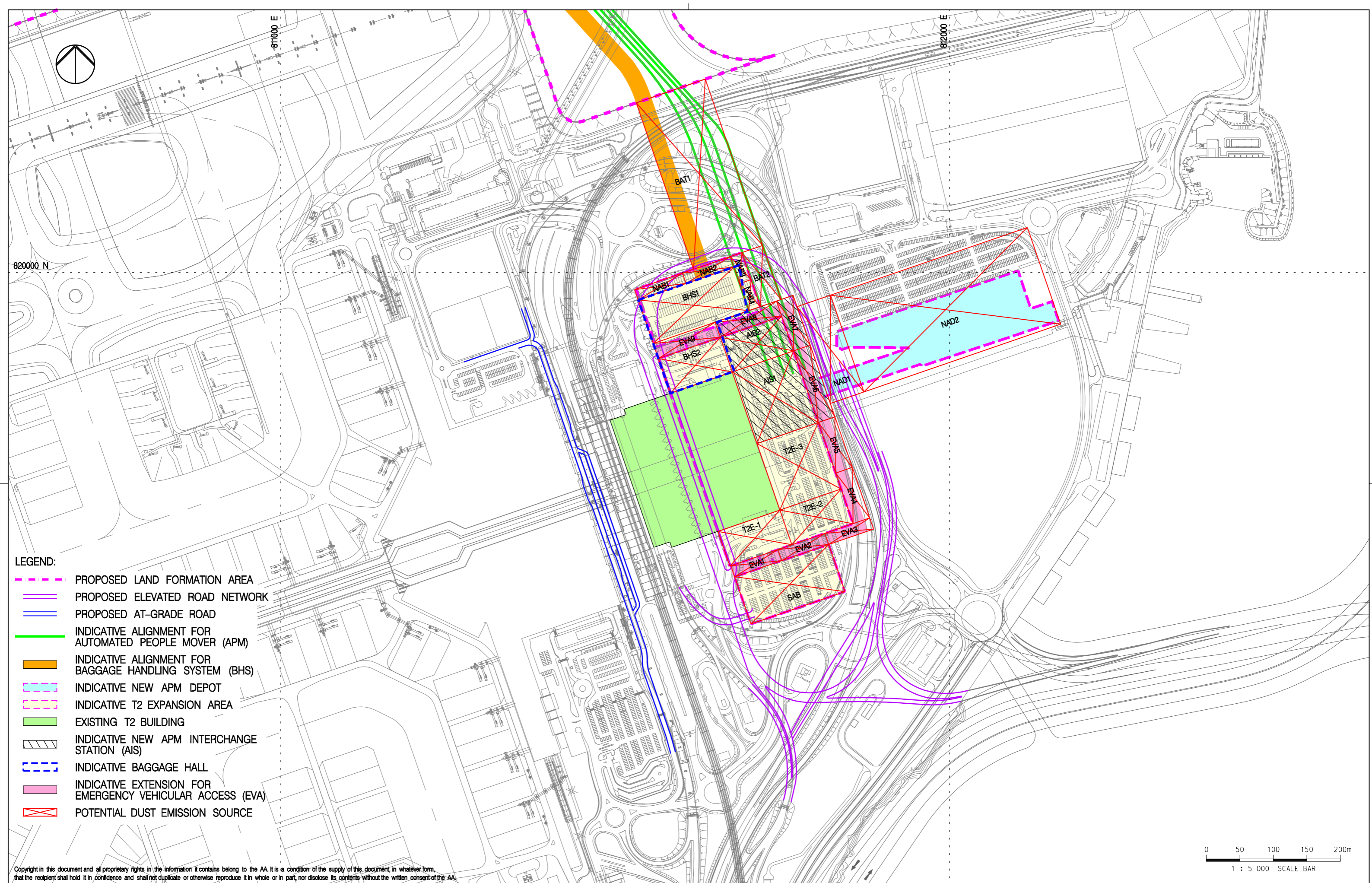
Rev.	Date	Description	Checked
A	04NOV13	FIRST ISSUE	MCD
B	30JAN14	GENERAL REVISION	NN
C	06MAR14	GENERAL REVISION	HC



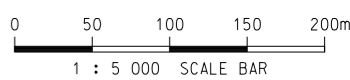
Title
LOCATIONS OF POTENTIAL CONSTRUCTION DUST SOURCES FROM INDICATIVE AREA FOR THE ADVANCED WORKS OF THE T2 EXPANSION, ITT AND NCD WORKS (TIER 1)

Consultant's Signatures for Approval		Date
Design	NN	04NOV13
Checkers	NN	04NOV13
Design Supervisor	EC	21MAR14
Authorised Representative	AFK	21MAR14

EXPANSION OF HONG KONG INTERNATIONAL AIRPORT INTO A THREE-RUNWAY SYSTEM		Scale at A3
Drawing No.	MCL / P132 / EIA / 5-2-010	1 : 5000
Rev.	C	

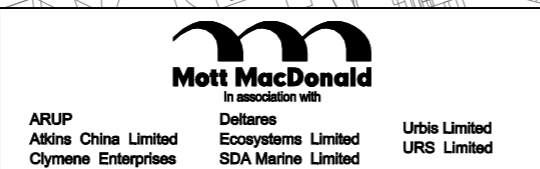


- LEGEND:**
- - - - PROPOSED LAND FORMATION AREA
 - - - - PROPOSED ELEVATED ROAD NETWORK
 - - - - PROPOSED AT-GRADE ROAD
 - - - - INDICATIVE ALIGNMENT FOR AUTOMATED PEOPLE MOVER (APM)
 - - - - INDICATIVE ALIGNMENT FOR BAGGAGE HANDLING SYSTEM (BHS)
 - - - - INDICATIVE NEW APM DEPOT
 - - - - INDICATIVE T2 EXPANSION AREA
 - - - - EXISTING T2 BUILDING
 - INDICATIVE NEW APM INTERCHANGE STATION (AIS)
 - INDICATIVE BAGGAGE HALL
 - INDICATIVE EXTENSION FOR EMERGENCY VEHICULAR ACCESS (EVA)
 - POTENTIAL DUST EMISSION SOURCE



Copyright in this document and all proprietary rights in the information it contains belong to the AA. It is a condition of the supply of this document, in whatever form, that the recipient shall hold it in confidence and shall not duplicate or otherwise reproduce it in whole or in part, nor disclose its contents without the written consent of the AA.

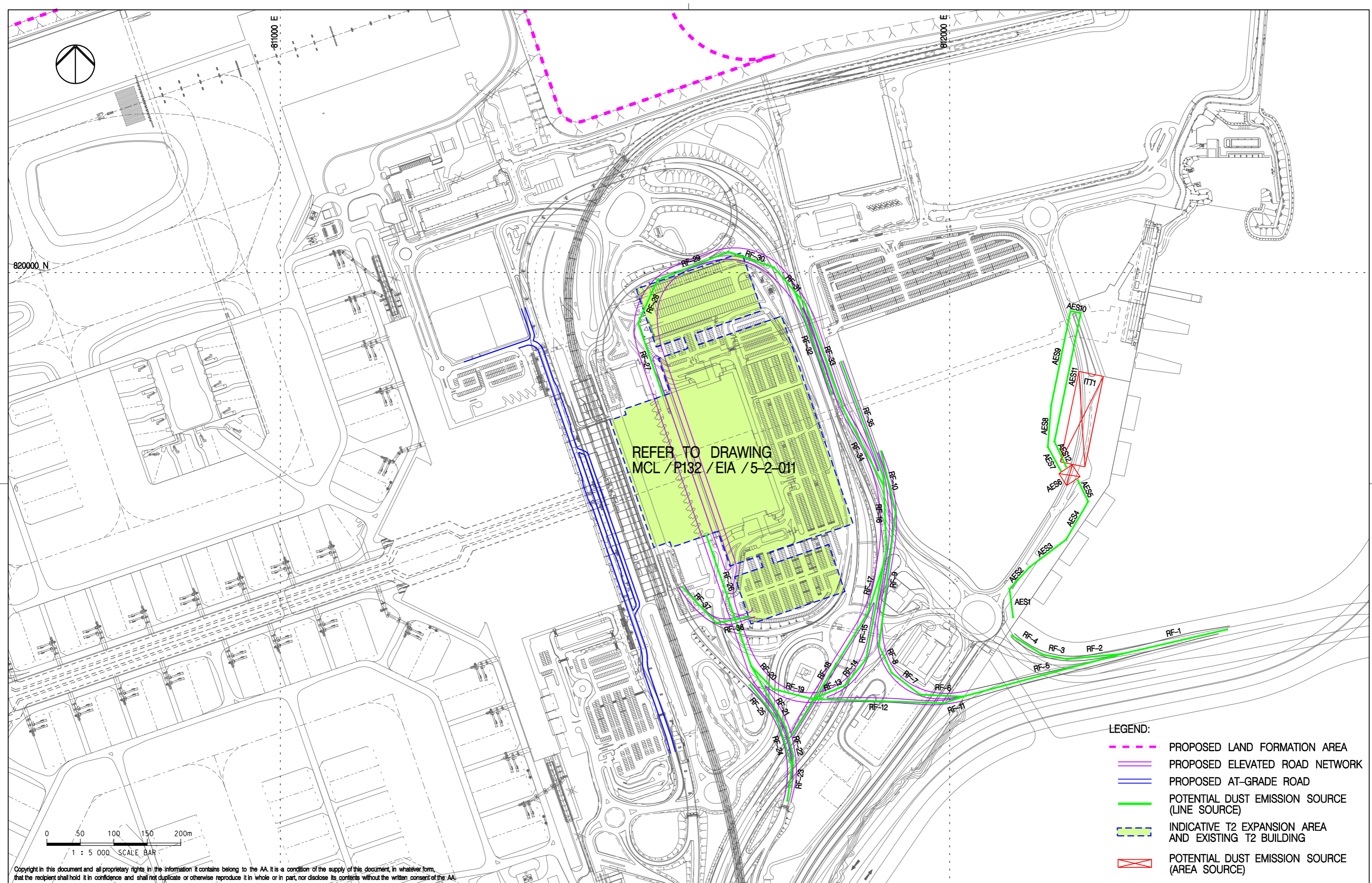
Rev.	Date	Description	Checked
A	21OCT13	FIRST ISSUE	MCD
B	23JAN14	GENERAL REVISION	NN
C	06MAR14	GENERAL REVISION	HC



Title
 LOCATIONS OF POTENTIAL CONSTRUCTION DUST SOURCES FROM INDICATIVE AREAS FOR T2 EXPANSION (INCLUDING CAR PARK NORTH AND LOUNGE LIMO), EMERGENCY VEHICULAR ACCESS, APM INTERCHANGE STATION, BAGGAGE HALL AND NEW APM DEPOT (TIER 1)

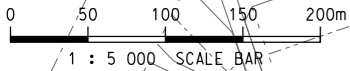
Consultant's Signatures for Approval		Date
Design	NN	21OCT13
Checkers	NN	21OCT13
Design Supervisor	EC	21MAR14
Authorised Representative	AFK	21MAR14

EXPANSION OF HONG KONG INTERNATIONAL AIRPORT INTO A THREE-RUNWAY SYSTEM		Scale at A3
Drawing No.	MCL / P132 / EIA / 5-2-011	1 : 5000
Rev.	C	



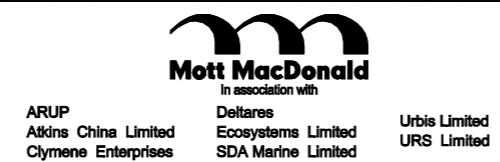
REFER TO DRAWING
MCL / P132 / EIA / 5-2-011

- LEGEND:**
- PROPOSED LAND FORMATION AREA
 - PROPOSED ELEVATED ROAD NETWORK
 - PROPOSED AT-GRADE ROAD
 - POTENTIAL DUST EMISSION SOURCE (LINE SOURCE)
 - INDICATIVE T2 EXPANSION AREA AND EXISTING T2 BUILDING
 - ▲ POTENTIAL DUST EMISSION SOURCE (AREA SOURCE)



Copyright in this document and all proprietary rights in the information it contains belong to the AA. It is a condition of the supply of this document, in whatever form, that the recipient shall hold it in confidence and shall not duplicate or otherwise reproduce it in whole or in part, nor disclose its contents without the written consent of the AA.

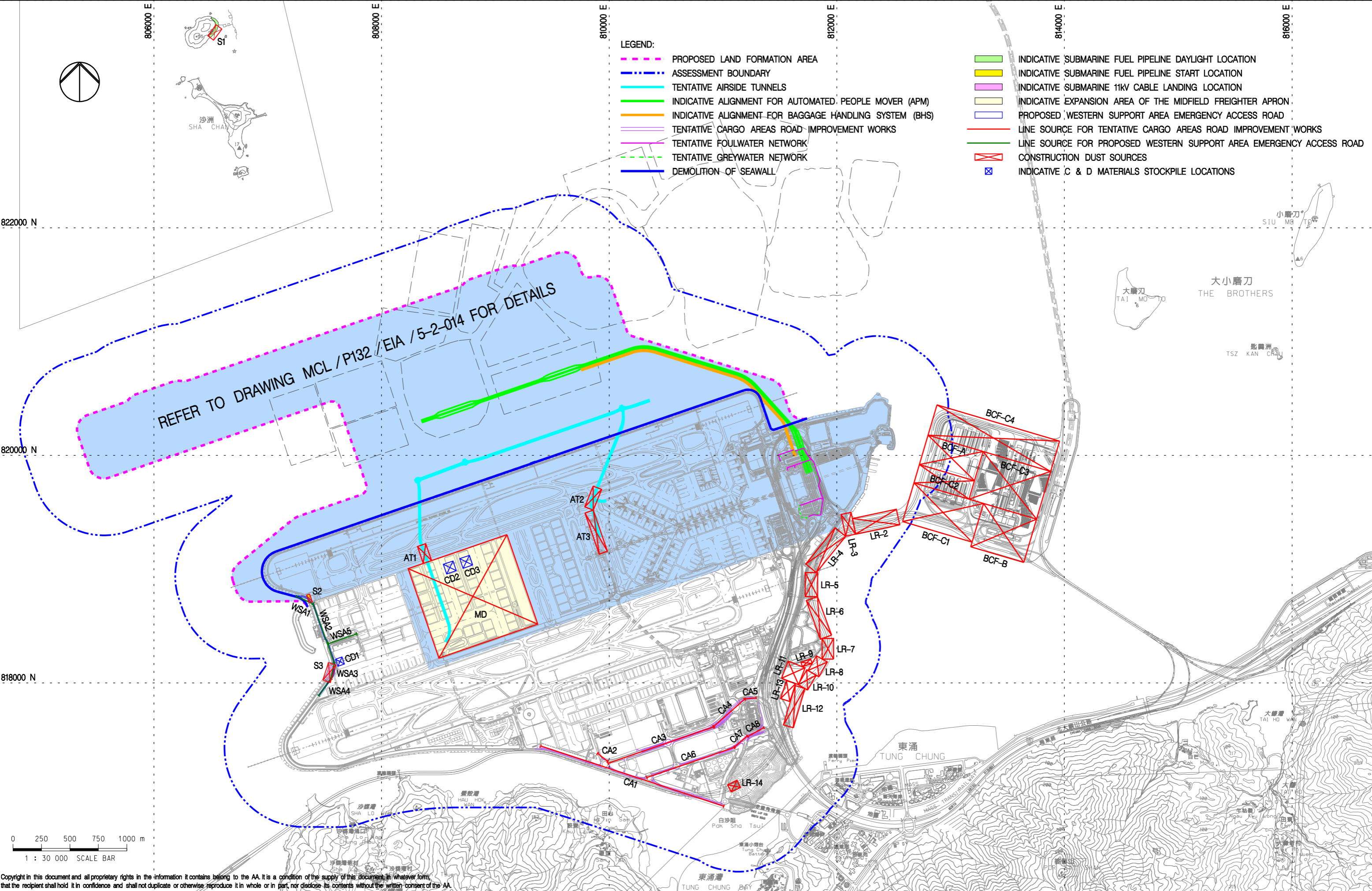
Rev.	Date	Description	Checked
A	11OCT13	FIRST ISSUE	NN
B	04NOV13	GENERAL REVISION	HC
C	23JAN14	GENERAL REVISION	NN
D	06MAR14	GENERAL REVISION	HC



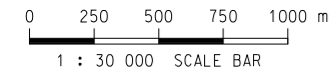
Title
LOCATIONS OF POTENTIAL CONSTRUCTION DUST SOURCES FROM PROPOSED ELEVATED ROAD NETWORK IMPROVEMENT FOR CONCEPT F OPTION 3 AND ITT WORKS (TIER 1)

Consultant's Signatures for Approval		Date
Design	NN	11OCT13
Checkers	NN	11OCT13
Design Supervisor	EC	21MAR14
Authorised Representative	AFK	21MAR14

EXPANSION OF HONG KONG INTERNATIONAL AIRPORT INTO A THREE-RUNWAY SYSTEM		Scale at A3
Drawing No.	MCL / P132 / EIA / 5-2-012	1 : 5000
Rev.	D	

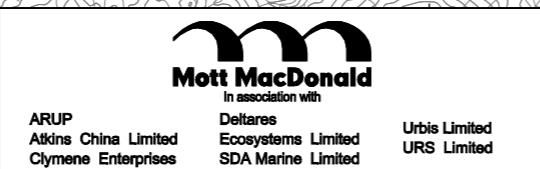


- LEGEND:**
- PROPOSED LAND FORMATION AREA
 - - - ASSESSMENT BOUNDARY
 - TENTATIVE AIRSIDE TUNNELS
 - INDICATIVE ALIGNMENT FOR AUTOMATED PEOPLE MOVER (APM)
 - INDICATIVE ALIGNMENT FOR BAGGAGE HANDLING SYSTEM (BHS)
 - TENTATIVE CARGO AREAS ROAD IMPROVEMENT WORKS
 - TENTATIVE FOULWATER NETWORK
 - TENTATIVE GREYWATER NETWORK
 - DEMOLITION OF SEAWALL
 - INDICATIVE SUBMARINE FUEL PIPELINE DAYLIGHT LOCATION
 - INDICATIVE SUBMARINE FUEL PIPELINE START LOCATION
 - INDICATIVE SUBMARINE 11kV CABLE LANDING LOCATION
 - INDICATIVE EXPANSION AREA OF THE MIDFIELD FREIGHTER APRON
 - PROPOSED WESTERN SUPPORT AREA EMERGENCY ACCESS ROAD
 - LINE SOURCE FOR TENTATIVE CARGO AREAS ROAD IMPROVEMENT WORKS
 - LINE SOURCE FOR PROPOSED WESTERN SUPPORT AREA EMERGENCY ACCESS ROAD
 - ▴ CONSTRUCTION DUST SOURCES
 - ▣ INDICATIVE C & D MATERIALS STOCKPILE LOCATIONS



Copyright in this document and all proprietary rights in the information it contains belong to the AA. It is a condition of the supply of this document, in whatever form, that the recipient shall hold it in confidence and shall not duplicate or otherwise reproduce it in whole or in part, nor disclose its contents without the written consent of the AA.

Rev.	Date	Description	Checked
A	23SEP13	FIRST ISSUE	EC
B	23JAN14	GENERAL REVISION	NN
C	12MAR14	GENERAL REVISION	NN



Title
 LOCATIONS OF POTENTIAL CONSTRUCTION DUST SOURCES FROM INDICATIVE AREAS FOR AIRSIDE TUNNELS, CARGO AREAS ROAD IMPROVEMENT WORKS, SUBMARINE FUEL PIPELINES AND CABLE, MIDFIELD FREIGHTER APRON, BOUNDARY CROSSING FACILITIES AND HONG KONG LINK ROAD (TIER 1)

Consultant's Signatures for Approval

Design	Checkers	Design Supervisor	Authorised Representative
NN	NN	EC	AFK

Date	EXPANSION OF HONG KONG INTERNATIONAL AIRPORT INTO A THREE-RUNWAY SYSTEM
23SEP13	
23SEP13	
21MAR14	
21MAR14	

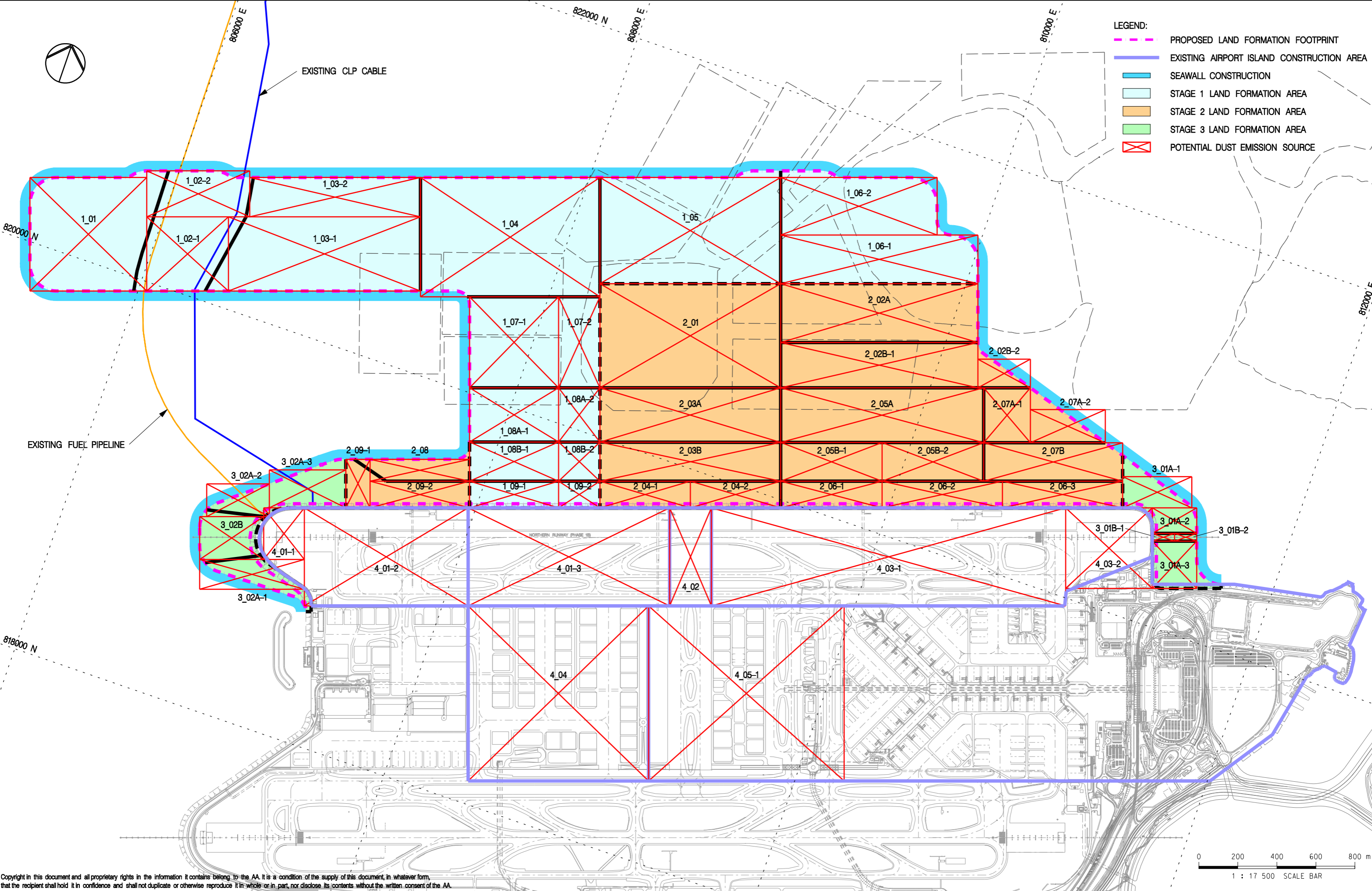
Drawing No. **MCL / P132 / EIA / 5-2-013**

Scale at A3 **1 : 30000**

Rev. **C**

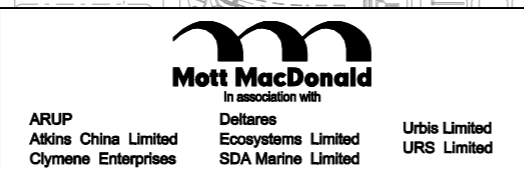


- LEGEND:**
- PROPOSED LAND FORMATION FOOTPRINT
 - EXISTING AIRPORT ISLAND CONSTRUCTION AREA
 - SEAWALL CONSTRUCTION
 - STAGE 1 LAND FORMATION AREA
 - STAGE 2 LAND FORMATION AREA
 - STAGE 3 LAND FORMATION AREA
 - X POTENTIAL DUST EMISSION SOURCE



Copyright in this document and all proprietary rights in the information it contains belong to the AA. It is a condition of the supply of this document, in whatever form, that the recipient shall hold it in confidence and shall not duplicate or otherwise reproduce it in whole or in part, nor disclose its contents without the written consent of the AA.

Rev.	Date	Description	Checked
A	04NOV13	FIRST ISSUE	NN
B	23JAN14	GENERAL REVISION	NN



Title
 LOCATIONS OF POTENTIAL CONSTRUCTION DUST SOURCES FROM LAND FORMATION AND EXISTING AIRPORT ISLAND WORK AREAS (TIER 1)

Consultant's Signatures for Approval		Date
Design	NN	04NOV13
Checkers	NN	04NOV13
Design Supervisor	EC	21MAR14
Authorised Representative	AFK	21MAR14

EXPANSION OF HONG KONG INTERNATIONAL AIRPORT INTO A THREE-RUNWAY SYSTEM		Scale at A3
Drawing No.	MCL / P132 / EIA / 5-2-014	1 : 17500
Rev.	B	