



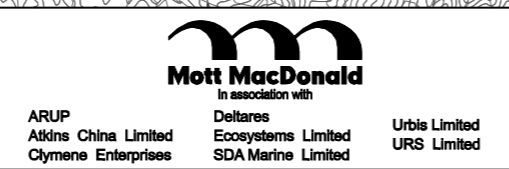
NOTE:
NO CONSTRUCTION WORK AT SHEUNG SHA CHAU ISLAND IN 2018

LEGEND:

- - - - - 500m ASSESSMENT AREA FROM PROJECT SITE BOUNDARY
- - - - - PROJECT SITE BOUNDARY (COMBINED BOUNDARY OF THE PROPOSED LAND FORMATION FOOTPRINT AND EXISTING AIRPORT ISLAND OR BOUNDARY OF THE INDICATIVE PIPELINE DAYLIGHTING LOCATION ON SHEUNG SHA CHAU ISLAND)
- EIAO-TM HOURLY CRITERION ($500 \mu\text{g}/\text{m}^3$)
- CONCRETE AND ASPHALT BATCHING PLANTS, CRUSHING PLANT, STOCKPILES AND HAUL ROADS
- INDICATIVE LOCATION OF HEAVY CONSTRUCTION WORKS AREAS
- X BARGING POINTS

Copyright in this document and all proprietary rights in the information it contains belong to the AA. It is a condition of the supply of this document, in whatever form, that the recipient shall hold it in confidence and shall not duplicate or otherwise reproduce it in whole or in part, nor disclose its contents without the written consent of the AA.

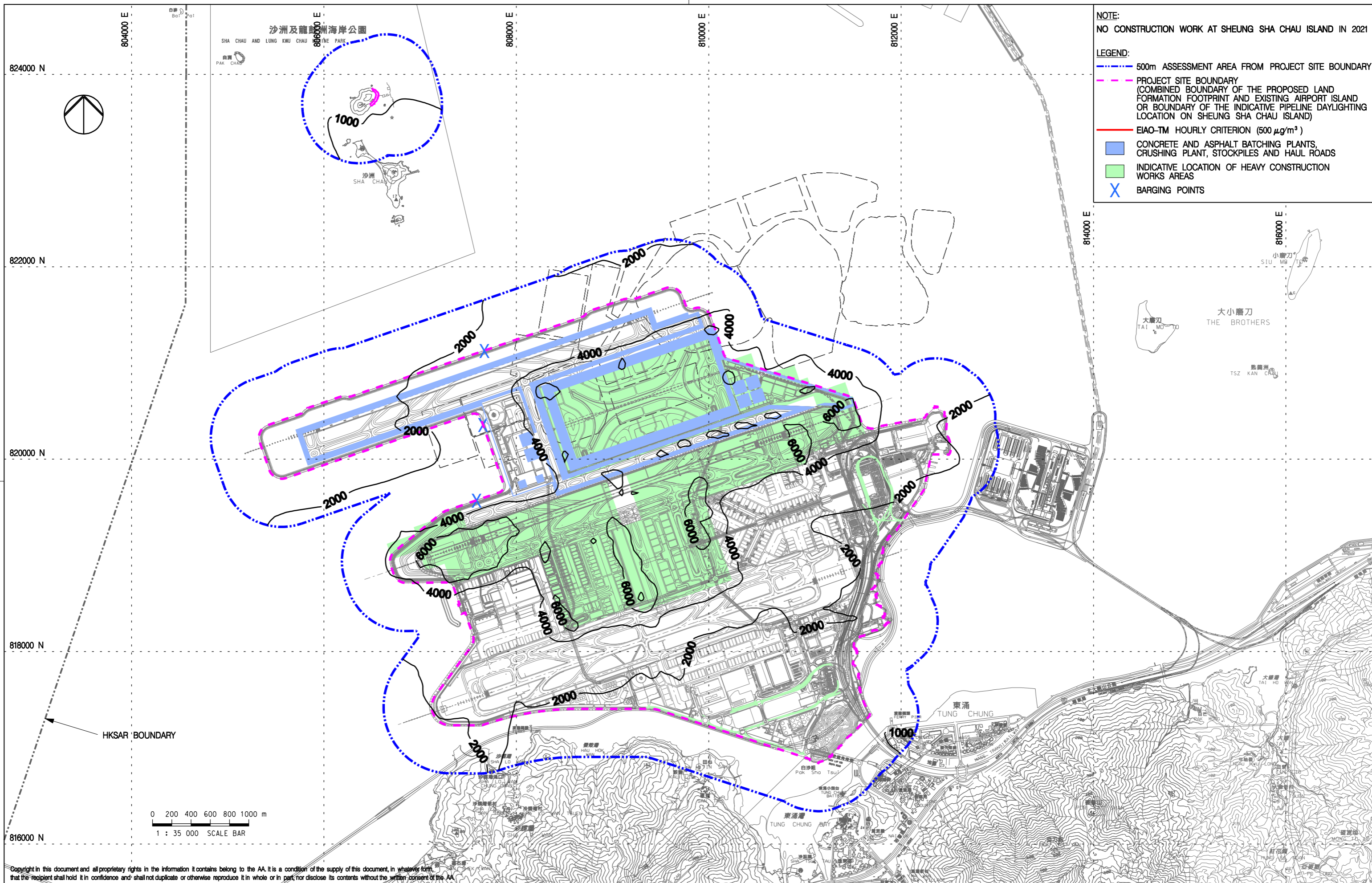
| Rev. | Date | Description | Checked |
|------|---------|------------------|---------|
| A | 20MAR14 | FIRST ISSUE | NN |
| B | 22MAY14 | GENERAL REVISION | NN |



Title
CUMULATIVE RESULT - CONTOUR OF TIER 1
MAXIMUM HOURLY TSP CONCENTRATION ($\mu\text{g}/\text{m}^3$)
AT 1.5m ABOVE GROUND AT YEAR 2018
DURING CONSTRUCTION PHASE (UNMITIGATED)

| Consultant's Signatures for Approval | | Date |
|--------------------------------------|-----|---------|
| Design | NN | 20MAR14 |
| Checkers | NN | 20MAR14 |
| Design Supervisor | EC | 22MAY14 |
| Authorised Representative | AFK | 22MAY14 |

| EXPANSION OF HONG KONG INTERNATIONAL AIRPORT INTO A THREE-RUNWAY SYSTEM | |
|-------------------------------------------------------------------------|----------------------------|
| Drawing No. | MCL / P132 / EIA / 5-2-047 |
| Scale at A3 | 1 : 35000 |
| Rev. | B |



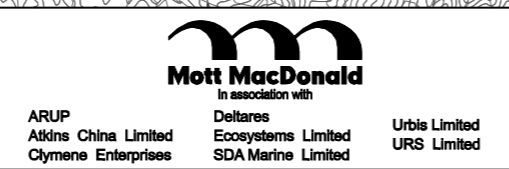
NOTE:
NO CONSTRUCTION WORK AT SHEUNG SHA CHAU ISLAND IN 2021

LEGEND:

- - - 500m ASSESSMENT AREA FROM PROJECT SITE BOUNDARY
- - - PROJECT SITE BOUNDARY (COMBINED BOUNDARY OF THE PROPOSED LAND FORMATION FOOTPRINT AND EXISTING AIRPORT ISLAND OR BOUNDARY OF THE INDICATIVE PIPELINE DAYLIGHTING LOCATION ON SHEUNG SHA CHAU ISLAND)
- EIAO-TM HOURLY CRITERION ($500 \mu\text{g}/\text{m}^3$)
- CONCRETE AND ASPHALT BATCHING PLANTS, CRUSHING PLANT, STOCKPILES AND HAUL ROADS
- INDICATIVE LOCATION OF HEAVY CONSTRUCTION WORKS AREAS
- X BARGING POINTS

Copyright in this document and all proprietary rights in the information it contains belong to the AA. It is a condition of the supply of this document, in whatever form, that the recipient shall hold it in confidence and shall not duplicate or otherwise reproduce it in whole or in part, nor disclose its contents without the written consent of the AA.

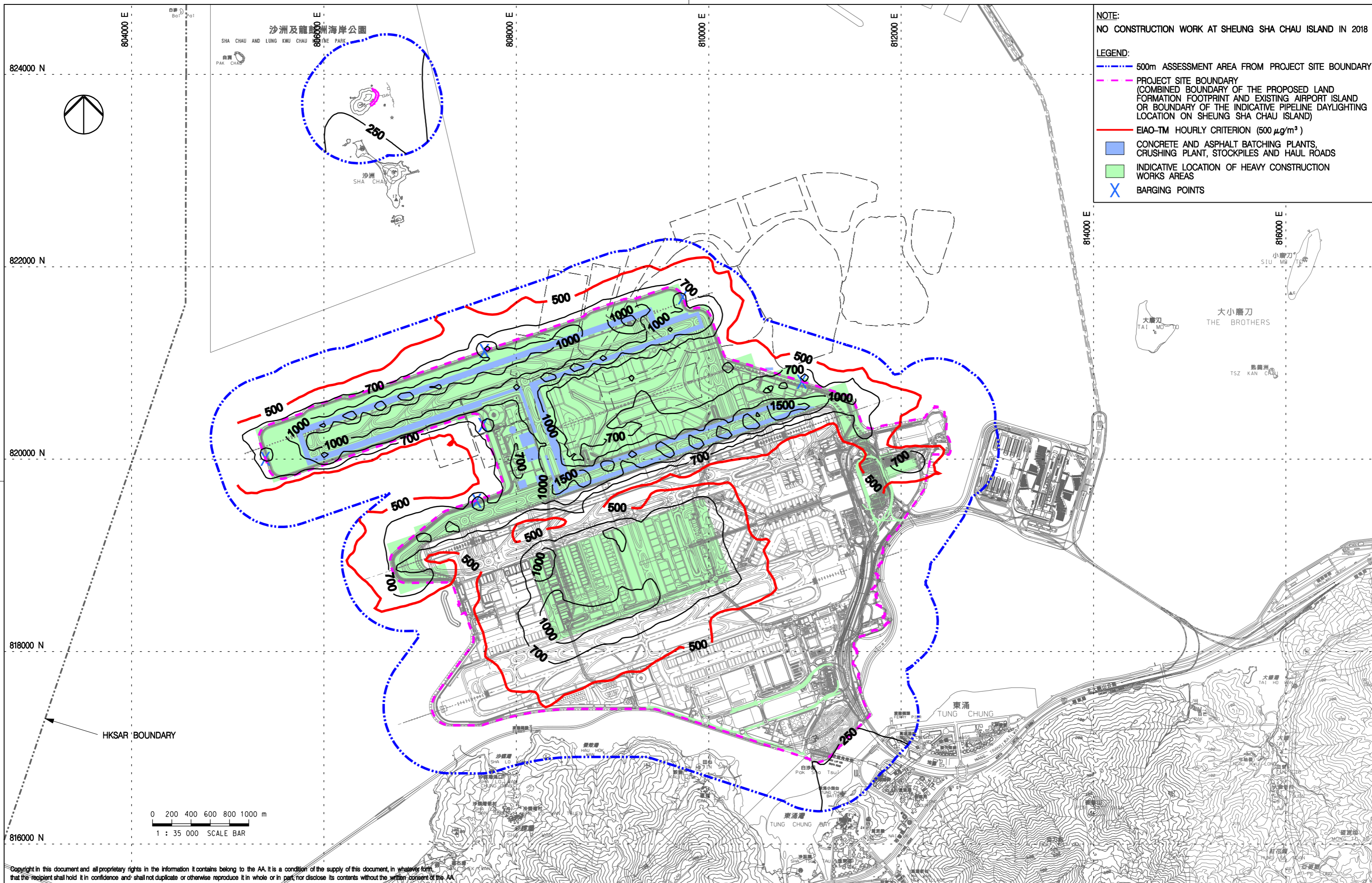
| Rev. | Date | Description | Checked |
|------|---------|------------------|---------|
| A | 20MAR14 | FIRST ISSUE | NN |
| B | 22MAY14 | GENERAL REVISION | NN |



Title
CUMULATIVE RESULT - CONTOUR OF TIER 1
MAXIMUM HOURLY TSP CONCENTRATION ($\mu\text{g}/\text{m}^3$)
AT 1.5m ABOVE GROUND AT YEAR 2021
DURING CONSTRUCTION PHASE (UNMITIGATED)

| Consultant's Signatures for Approval | | Date |
|--------------------------------------|-----|---------|
| Design | NN | 20MAR14 |
| Checkers | NN | 20MAR14 |
| Design Supervisor | EC | 22MAY14 |
| Authorised Representative | AFK | 22MAY14 |

| EXPANSION OF HONG KONG INTERNATIONAL AIRPORT INTO A THREE-RUNWAY SYSTEM | |
|-------------------------------------------------------------------------|----------------------------|
| Drawing No. | MCL / P132 / EIA / 5-2-048 |
| Scale at A3 | 1 : 35000 |
| Rev. | B |



NOTE:
NO CONSTRUCTION WORK AT SHEUNG SHA CHAU ISLAND IN 2018

LEGEND:

- - - 500m ASSESSMENT AREA FROM PROJECT SITE BOUNDARY
- - - PROJECT SITE BOUNDARY (COMBINED BOUNDARY OF THE PROPOSED LAND FORMATION FOOTPRINT AND EXISTING AIRPORT ISLAND OR BOUNDARY OF THE INDICATIVE PIPELINE DAYLIGHTING LOCATION ON SHEUNG SHA CHAU ISLAND)
- EIAO-TM HOURLY CRITERION ($500 \mu\text{g}/\text{m}^3$)
- CONCRETE AND ASPHALT BATCHING PLANTS, CRUSHING PLANT, STOCKPILES AND HAUL ROADS
- INDICATIVE LOCATION OF HEAVY CONSTRUCTION WORKS AREAS
- X BARGING POINTS

Copyright in this document and all proprietary rights in the information it contains belong to the AA. It is a condition of the supply of this document, in whatever form, that the recipient shall hold it in confidence and shall not duplicate or otherwise reproduce it in whole or in part, nor disclose its contents without the written consent of the AA.

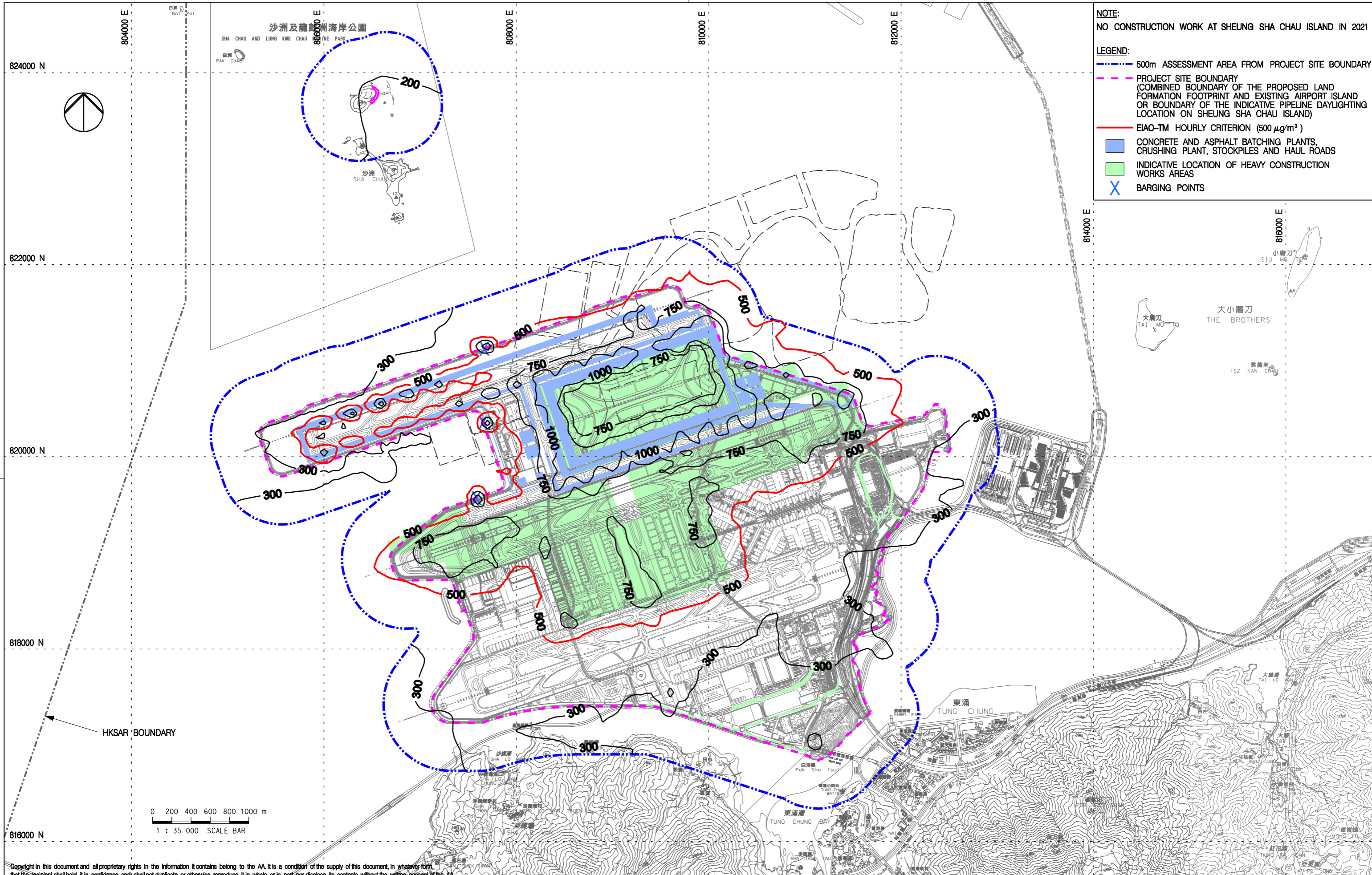
| Rev. | Date | Description | Checked |
|------|---------|------------------|---------|
| A | 20MAR14 | FIRST ISSUE | NN |
| B | 22MAY14 | GENERAL REVISION | NN |



Title
CUMULATIVE RESULT - CONTOUR OF TIER 1
MAXIMUM HOURLY TSP CONCENTRATION ($\mu\text{g}/\text{m}^3$)
AT 1.5m ABOVE GROUND AT YEAR 2018
DURING CONSTRUCTION PHASE (MITIGATED)

| Consultant's Signatures for Approval | | Date |
|--------------------------------------|-----|---------|
| Design | NN | 20MAR14 |
| Checkers | NN | 20MAR14 |
| Design Supervisor | EC | 22MAY14 |
| Authorised Representative | AFK | 22MAY14 |

| EXPANSION OF HONG KONG INTERNATIONAL AIRPORT INTO A THREE-RUNWAY SYSTEM | |
|-------------------------------------------------------------------------|----------------------------|
| Drawing No. | MCL / P132 / EIA / 5-2-049 |
| Scale at A3 | 1 : 35000 |
| Rev. | B |



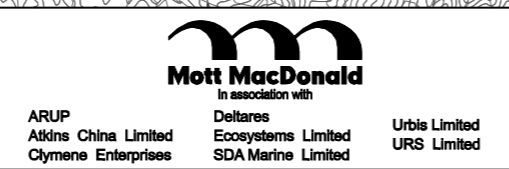
NOTE:
NO CONSTRUCTION WORK AT SHEUNG SHA CHAU ISLAND IN 2021

LEGEND:

- - - 500m ASSESSMENT AREA FROM PROJECT SITE BOUNDARY
- - - PROJECT SITE BOUNDARY (COMBINED BOUNDARY OF THE PROPOSED LAND FORMATION FOOTPRINT AND EXISTING AIRPORT ISLAND OR BOUNDARY OF THE INDICATIVE PIPELINE DAYLIGHTING LOCATION ON SHEUNG SHA CHAU ISLAND)
- EIAO-TM HOURLY CRITERION (500 µg/m³)
- CONCRETE AND ASPHALT BATCHING PLANTS, CRUSHING PLANT, STOCKPILES AND HAUL ROADS
- INDICATIVE LOCATION OF HEAVY CONSTRUCTION WORKS AREAS
- X BARGING POINTS

Copyright in this document and all proprietary rights in the information it contains belong to the AA. It is a condition of the supply of this document, in whatever form, that the recipient shall hold it in confidence and shall not duplicate or otherwise reproduce it in whole or in part, nor disclose its contents without the written consent of the AA.

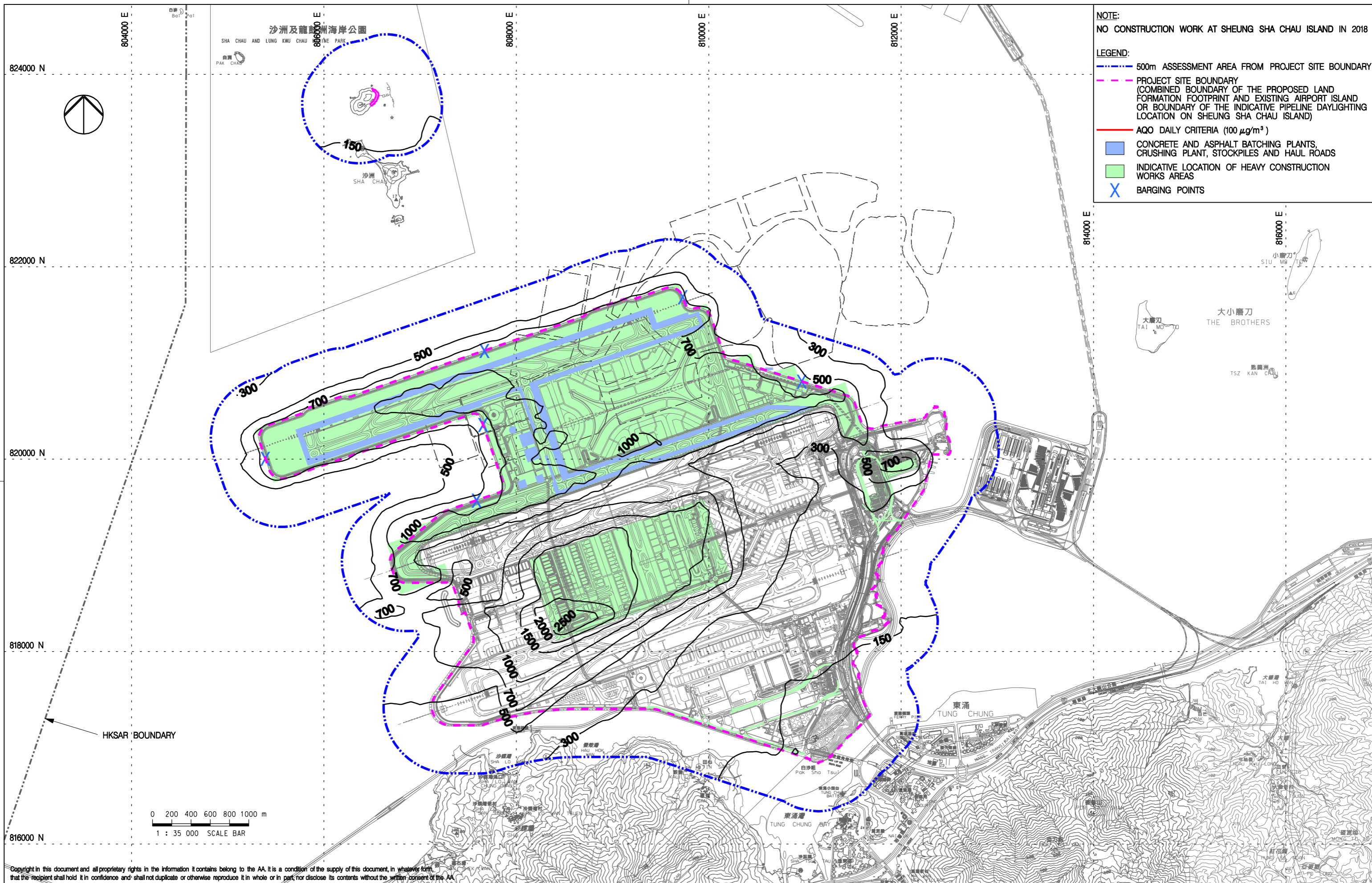
| Rev. | Date | Description | Checked |
|------|---------|------------------|---------|
| A | 20MAR14 | FIRST ISSUE | NN |
| B | 22MAY14 | GENERAL REVISION | NN |



Title
CUMULATIVE RESULT - CONTOUR OF TIER 1
MAXIMUM HOURLY TSP CONCENTRATION (µg/m³)
AT 1.5m ABOVE GROUND AT YEAR 2021
DURING CONSTRUCTION PHASE (MITIGATED)

| Consultant's Signatures for Approval | | Date |
|--------------------------------------|-----|---------|
| Design | NN | 20MAR14 |
| Checkers | NN | 20MAR14 |
| Design Supervisor | EC | 22MAY14 |
| Authorised Representative | AFK | 22MAY14 |

| EXPANSION OF HONG KONG INTERNATIONAL AIRPORT INTO A THREE-RUNWAY SYSTEM | |
|-------------------------------------------------------------------------|----------------------------|
| Drawing No. | MCL / P132 / EIA / 5-2-050 |
| Scale at A3 | 1 : 35000 |
| Rev. | B |



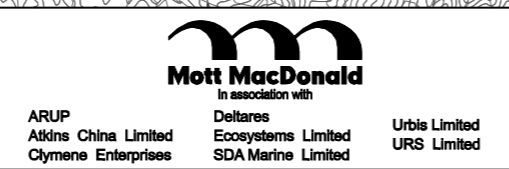
NOTE:
NO CONSTRUCTION WORK AT SHEUNG SHA CHAU ISLAND IN 2018

LEGEND:

- - - - - 500m ASSESSMENT AREA FROM PROJECT SITE BOUNDARY
- - - - - PROJECT SITE BOUNDARY (COMBINED BOUNDARY OF THE PROPOSED LAND FORMATION FOOTPRINT AND EXISTING AIRPORT ISLAND OR BOUNDARY OF THE INDICATIVE PIPELINE DAYLIGHTING LOCATION ON SHEUNG SHA CHAU ISLAND)
- AQO DAILY CRITERIA ($100 \mu\text{g}/\text{m}^3$)
- CONCRETE AND ASPHALT BATCHING PLANTS, CRUSHING PLANT, STOCKPILES AND HAUL ROADS
- INDICATIVE LOCATION OF HEAVY CONSTRUCTION WORKS AREAS
- X BARGING POINTS

Copyright in this document and all proprietary rights in the information it contains belong to the AA. It is a condition of the supply of this document, in whatever form, that the recipient shall hold it in confidence and shall not duplicate or otherwise reproduce it in whole or in part, nor disclose its contents without the written consent of the AA.

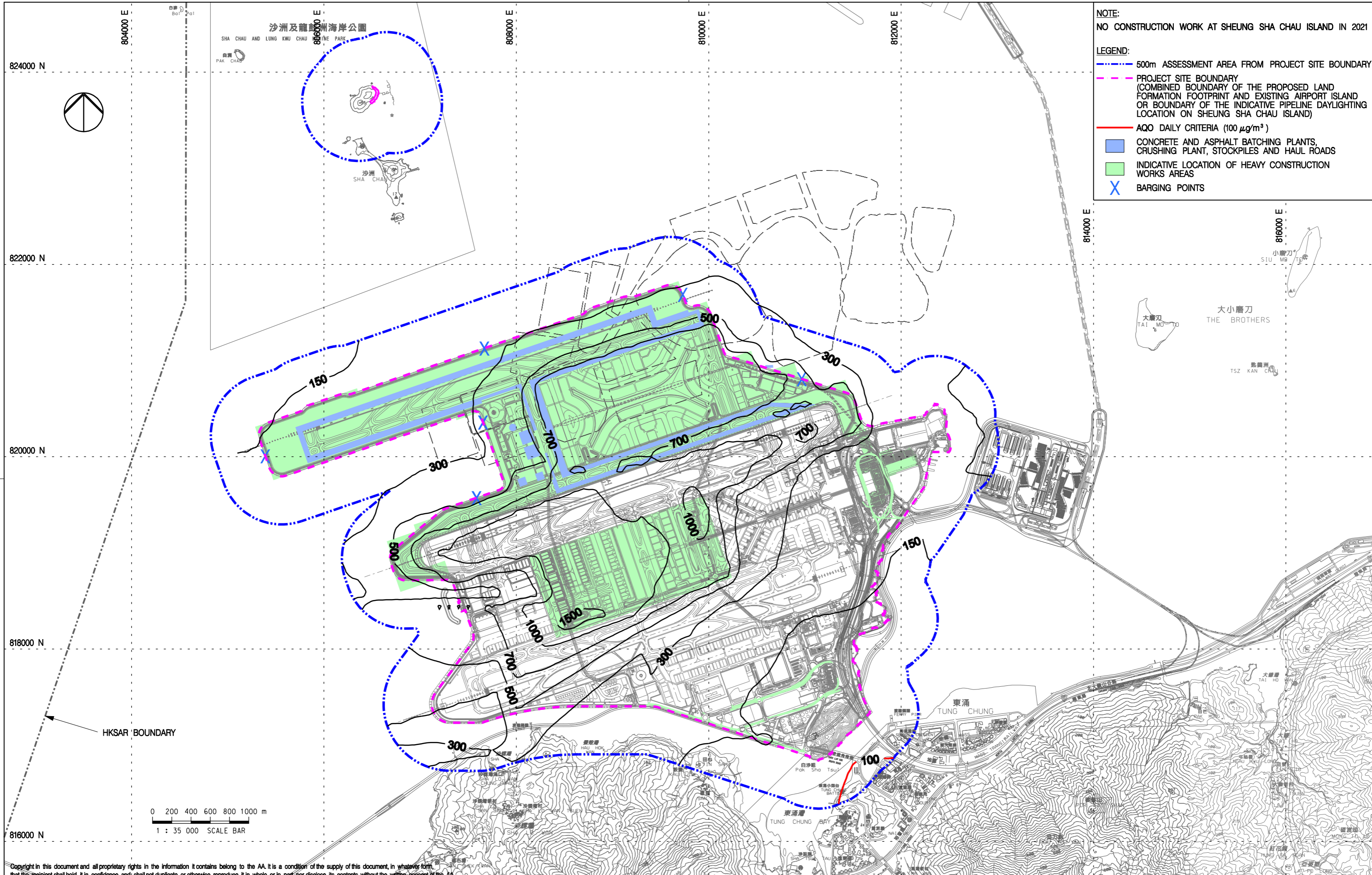
| Rev. | Date | Description | Checked |
|------|---------|------------------|---------|
| A | 21MAR14 | FIRST ISSUE | NN |
| B | 22MAY14 | GENERAL REVISION | NN |



Title
CUMULATIVE RESULT - CONTOUR OF TIER 1 TENTH MAXIMUM DAILY RSP CONCENTRATION ($\mu\text{g}/\text{m}^3$) AT 1.5m ABOVE GROUND AT YEAR 2018 DURING CONSTRUCTION PHASE (UNMITIGATED)

| Consultant's Signatures for Approval | | Date |
|--------------------------------------|-----|---------|
| Design | NN | 21MAR14 |
| Checkers | NN | 21MAR14 |
| Design Supervisor | EC | 22MAY14 |
| Authorised Representative | AFK | 22MAY14 |

| EXPANSION OF HONG KONG INTERNATIONAL AIRPORT INTO A THREE-RUNWAY SYSTEM | |
|-------------------------------------------------------------------------|----------------------------|
| Drawing No. | MCL / P132 / EIA / 5-2-051 |
| Scale at A3 | 1 : 35000 |
| Rev. | B |



NOTE:
NO CONSTRUCTION WORK AT SHEUNG SHA CHAU ISLAND IN 2021

LEGEND:

- - - - - 500m ASSESSMENT AREA FROM PROJECT SITE BOUNDARY
- - - - - PROJECT SITE BOUNDARY (COMBINED BOUNDARY OF THE PROPOSED LAND FORMATION FOOTPRINT AND EXISTING AIRPORT ISLAND OR BOUNDARY OF THE INDICATIVE PIPELINE DAYLIGHTING LOCATION ON SHEUNG SHA CHAU ISLAND)
- AQO DAILY CRITERIA ($100 \mu\text{g}/\text{m}^3$)
- CONCRETE AND ASPHALT BATCHING PLANTS, CRUSHING PLANT, STOCKPILES AND HAUL ROADS
- INDICATIVE LOCATION OF HEAVY CONSTRUCTION WORKS AREAS
- X BARGING POINTS

Copyright in this document and all proprietary rights in the information it contains belong to the AA. It is a condition of the supply of this document, in whatever form, that the recipient shall hold it in confidence and shall not duplicate or otherwise reproduce it in whole or in part, nor disclose its contents without the written consent of the AA.

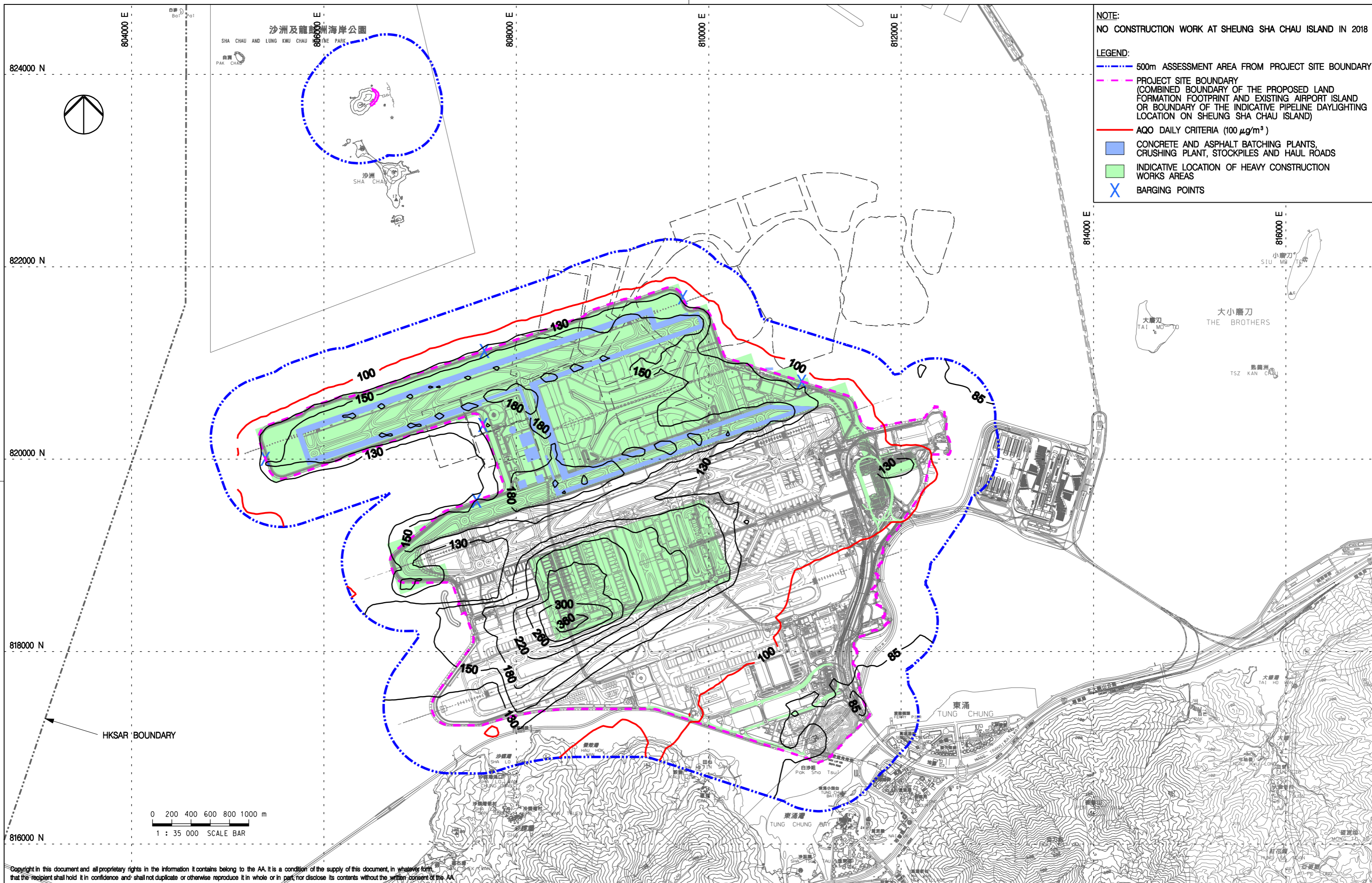
| Rev. | Date | Description | Checked |
|------|---------|------------------|---------|
| A | 20MAR14 | FIRST ISSUE | NN |
| B | 22MAY14 | GENERAL REVISION | NN |



Title
CUMULATIVE RESULT - CONTOUR OF TIER 1 TENTH MAXIMUM DAILY RSP CONCENTRATION ($\mu\text{g}/\text{m}^3$) AT 1.5m ABOVE GROUND AT YEAR 2021 DURING CONSTRUCTION PHASE (UNMITIGATED)

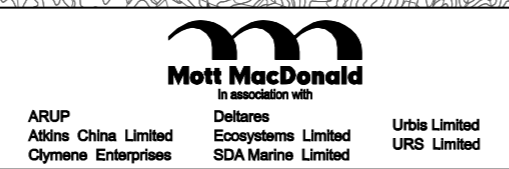
| Consultant's Signatures for Approval | | Date |
|--------------------------------------|-----|---------|
| Design | NN | 20MAR14 |
| Checkers | NN | 20MAR14 |
| Design Supervisor | EC | 22MAY14 |
| Authorised Representative | AFK | 22MAY14 |

| EXPANSION OF HONG KONG INTERNATIONAL AIRPORT INTO A THREE-RUNWAY SYSTEM | |
|-------------------------------------------------------------------------|----------------------------|
| Drawing No. | MCL / P132 / EIA / 5-2-052 |
| Scale at A3 | 1 : 35000 |
| Rev. | B |



Copyright in this document and all proprietary rights in the information it contains belong to the AA. It is a condition of the supply of this document, in whatever form, that the recipient shall hold it in confidence and shall not duplicate or otherwise reproduce it in whole or in part, nor disclose its contents without the written consent of the AA.

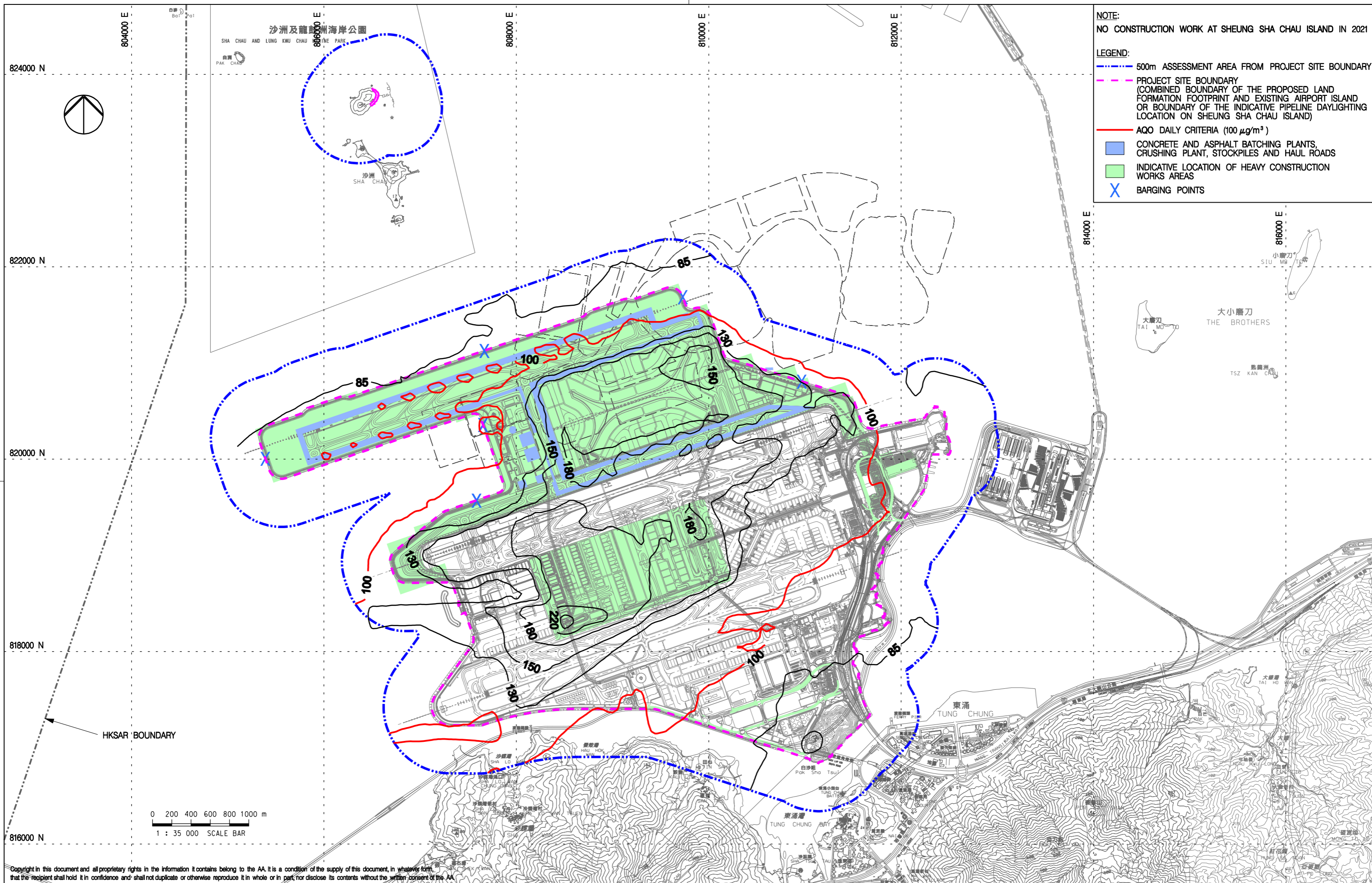
| Rev. | Date | Description | Checked |
|------|---------|------------------|---------|
| A | 20MAR14 | FIRST ISSUE | NN |
| B | 22MAY14 | GENERAL REVISION | NN |



Title
CUMULATIVE RESULT - CONTOUR OF TIER 1 TENTH MAXIMUM DAILY RSP CONCENTRATION ($\mu\text{g}/\text{m}^3$) AT 1.5m ABOVE GROUND AT YEAR 2018 DURING CONSTRUCTION PHASE (MITIGATED)

| Consultant's Signatures for Approval | | Date |
|--------------------------------------|-----|---------|
| Design | NN | 20MAR14 |
| Checkers | NN | 20MAR14 |
| Design Supervisor | EC | 22MAY14 |
| Authorised Representative | AFK | 22MAY14 |

| EXPANSION OF HONG KONG INTERNATIONAL AIRPORT INTO A THREE-RUNWAY SYSTEM | |
|-------------------------------------------------------------------------|----------------------------|
| Drawing No. | MCL / P132 / EIA / 5-2-053 |
| Scale at A3 | 1 : 35000 |
| Rev. | B |



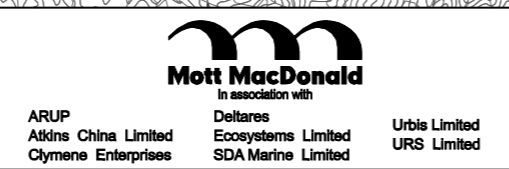
NOTE:
NO CONSTRUCTION WORK AT SHEUNG SHA CHAU ISLAND IN 2021

LEGEND:

- - - - 500m ASSESSMENT AREA FROM PROJECT SITE BOUNDARY
- - - - PROJECT SITE BOUNDARY (COMBINED BOUNDARY OF THE PROPOSED LAND FORMATION FOOTPRINT AND EXISTING AIRPORT ISLAND OR BOUNDARY OF THE INDICATIVE PIPELINE DAYLIGHTING LOCATION ON SHEUNG SHA CHAU ISLAND)
- AQO DAILY CRITERIA ($100 \mu\text{g}/\text{m}^3$)
- CONCRETE AND ASPHALT BATCHING PLANTS, CRUSHING PLANT, STOCKPILES AND HAUL ROADS
- INDICATIVE LOCATION OF HEAVY CONSTRUCTION WORKS AREAS
- X BARGING POINTS

Copyright in this document and all proprietary rights in the information it contains belong to the AA. It is a condition of the supply of this document, in whatever form, that the recipient shall hold it in confidence and shall not duplicate or otherwise reproduce it in whole or in part, nor disclose its contents without the written consent of the AA.

| Rev. | Date | Description | Checked |
|------|---------|------------------|---------|
| A | 20MAR14 | FIRST ISSUE | NN |
| B | 22MAY14 | GENERAL REVISION | NN |



Title
CUMULATIVE RESULT - CONTOUR OF TIER 1 TENTH MAXIMUM DAILY RSP CONCENTRATION ($\mu\text{g}/\text{m}^3$) AT 1.5m ABOVE GROUND AT YEAR 2021 DURING CONSTRUCTION PHASE (MITIGATED)

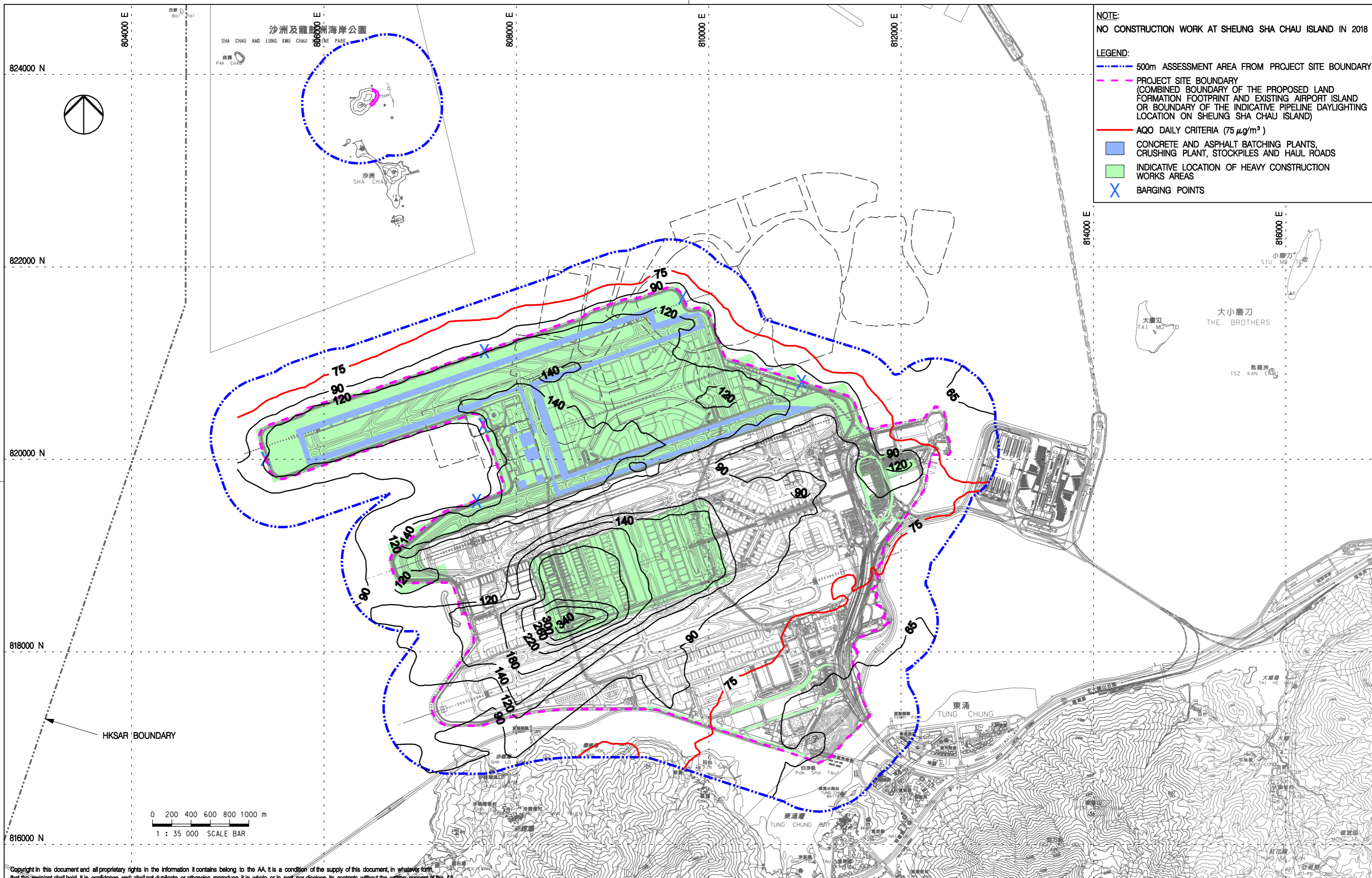
| Consultant's Signatures for Approval | | Date |
|--------------------------------------|-----|---------|
| Design | NN | 20MAR14 |
| Checkers | NN | 20MAR14 |
| Design Supervisor | EC | 22MAY14 |
| Authorised Representative | AFK | 22MAY14 |

EXPANSION OF HONG KONG INTERNATIONAL AIRPORT INTO A THREE-RUNWAY SYSTEM

Drawing No. **MCL / P132 / EIA / 5-2-054**

Scale at A3 **1 : 35000**

Rev. **B**



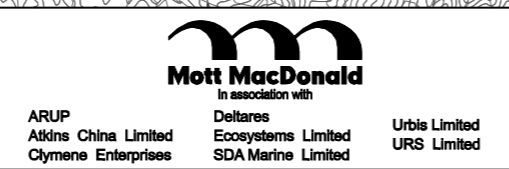
NOTE:
NO CONSTRUCTION WORK AT SHEUNG SHA CHAU ISLAND IN 2018

LEGEND:

- - - - - 500m ASSESSMENT AREA FROM PROJECT SITE BOUNDARY
- - - - - PROJECT SITE BOUNDARY (COMBINED BOUNDARY OF THE PROPOSED LAND FORMATION FOOTPRINT AND EXISTING AIRPORT ISLAND OR BOUNDARY OF THE INDICATIVE PIPELINE DAYLIGHTING LOCATION ON SHEUNG SHA CHAU ISLAND)
- — — — — AQO DAILY CRITERIA ($75 \mu\text{g}/\text{m}^3$)
- CONCRETE AND ASPHALT BATCHING PLANTS, CRUSHING PLANT, STOCKPILES AND HAUL ROADS
- INDICATIVE LOCATION OF HEAVY CONSTRUCTION WORKS AREAS
- X BARGING POINTS

Copyright in this document and all proprietary rights in the information it contains belong to the AA. It is a condition of the supply of this document, in whatever form, that the recipient shall hold it in confidence and shall not duplicate or otherwise reproduce it in whole or in part, nor disclose its contents without the written consent of the AA.

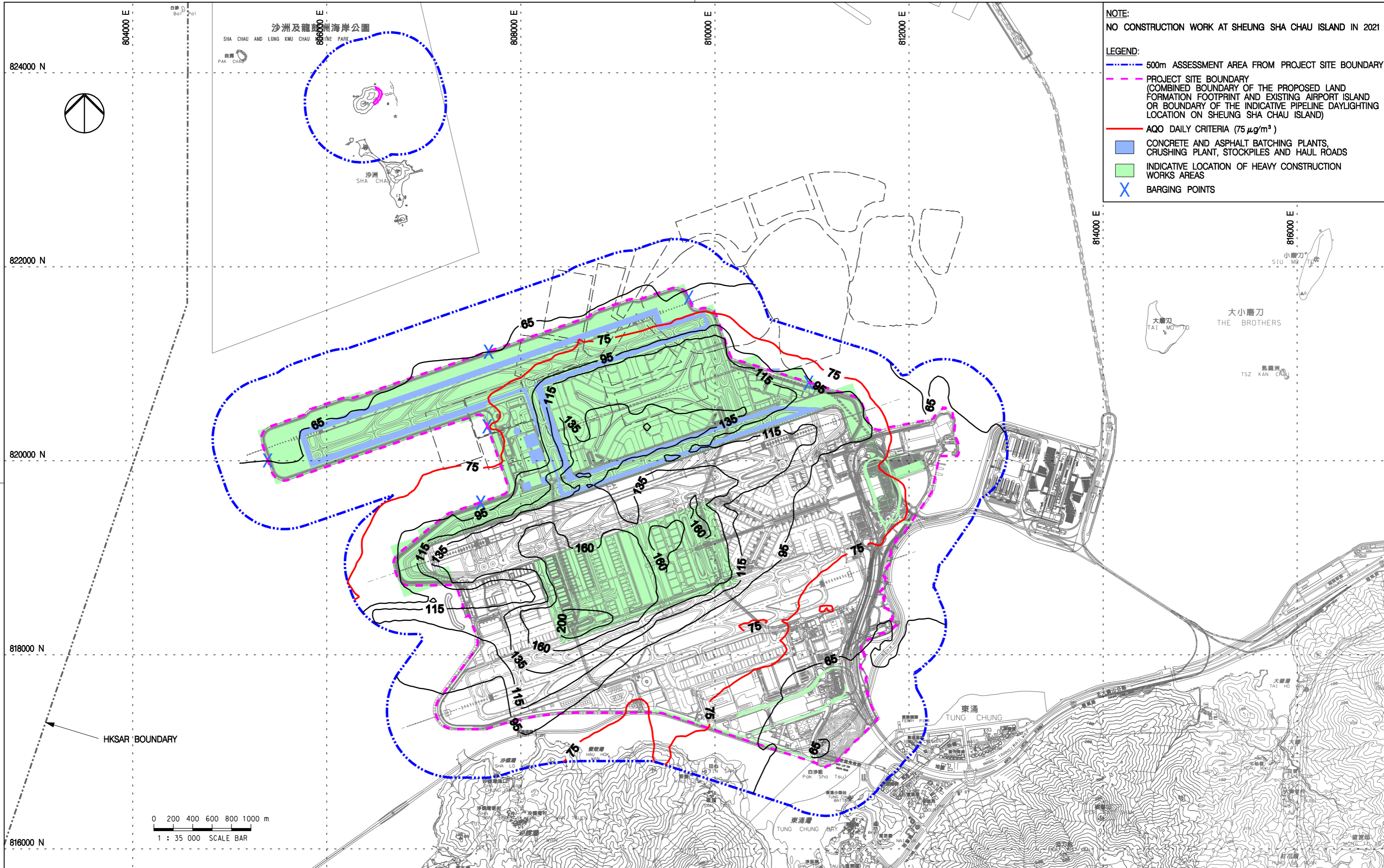
| Rev. | Date | Description | Checked |
|------|---------|------------------|---------|
| A | 20MAR14 | FIRST ISSUE | NN |
| B | 22MAY14 | GENERAL REVISION | NN |



Title
CUMULATIVE RESULT - CONTOUR OF TIER 1 TENTH MAXIMUM DAILY FSP CONCENTRATION ($\mu\text{g}/\text{m}^3$) AT 1.5m ABOVE GROUND AT YEAR 2018 DURING CONSTRUCTION PHASE (UNMITIGATED)

| Consultant's Signatures for Approval | | Date |
|--------------------------------------|-----|---------|
| Design | NN | 20MAR14 |
| Checkers | NN | 20MAR14 |
| Design Supervisor | EC | 22MAY14 |
| Authorised Representative | AFK | 22MAY14 |

| EXPANSION OF HONG KONG INTERNATIONAL AIRPORT INTO A THREE-RUNWAY SYSTEM | |
|-------------------------------------------------------------------------|----------------------------|
| Drawing No. | MCL / P132 / EIA / 5-2-055 |
| Scale at A3 | 1 : 35000 |
| Rev. | B |



NOTE:
NO CONSTRUCTION WORK AT SHEUNG SHA CHAU ISLAND IN 2021

LEGEND:

- - - - - 500m ASSESSMENT AREA FROM PROJECT SITE BOUNDARY
- - - - - PROJECT SITE BOUNDARY (COMBINED BOUNDARY OF THE PROPOSED LAND FORMATION FOOTPRINT AND EXISTING AIRPORT ISLAND OR BOUNDARY OF THE INDICATIVE PIPELINE DAYLIGHTING LOCATION ON SHEUNG SHA CHAU ISLAND)
- AQO DAILY CRITERIA ($75 \mu\text{g}/\text{m}^3$)
- CONCRETE AND ASPHALT BATCHING PLANTS, CRUSHING PLANT, STOCKPILES AND HAUL ROADS
- INDICATIVE LOCATION OF HEAVY CONSTRUCTION WORKS AREAS
- X BARGING POINTS

Copyright in this document and all proprietary rights in the information it contains belong to the AA. It is a condition of the supply of this document, in whatever form, that the recipient shall hold it in confidence and shall not duplicate or otherwise reproduce it in whole or in part, nor disclose its contents without the written consent of the AA.

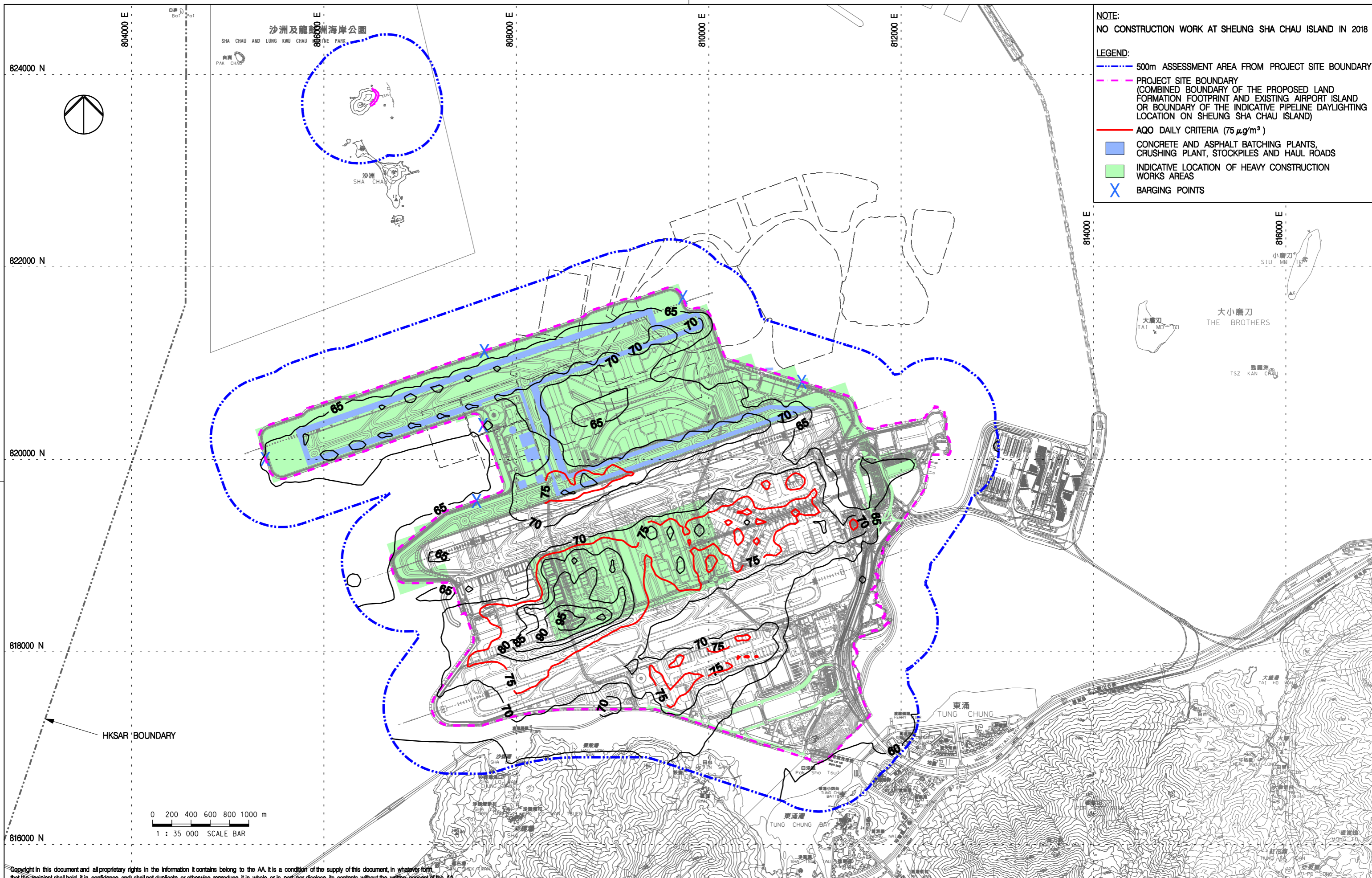
| Rev. | Date | Description | Checked |
|------|---------|------------------|---------|
| A | 20MAR14 | FIRST ISSUE | NN |
| B | 22MAY14 | GENERAL REVISION | NN |



Title
CUMULATIVE RESULT - CONTOUR OF TIER 1 TENTH MAXIMUM DAILY FSP CONCENTRATION ($\mu\text{g}/\text{m}^3$) AT 1.5m ABOVE GROUND AT YEAR 2021 DURING CONSTRUCTION PHASE (UNMITIGATED)

| Consultant's Signatures for Approval | | Date |
|--------------------------------------|-----|---------|
| Design | NN | 20MAR14 |
| Checkers | NN | 20MAR14 |
| Design Supervisor | EC | 22MAY14 |
| Authorised Representative | AFK | 22MAY14 |

| EXPANSION OF HONG KONG INTERNATIONAL AIRPORT INTO A THREE-RUNWAY SYSTEM | |
|-------------------------------------------------------------------------|----------------------------|
| Drawing No. | MCL / P132 / EIA / 5-2-056 |
| Scale at A3 | 1 : 35000 |
| Rev. | B |



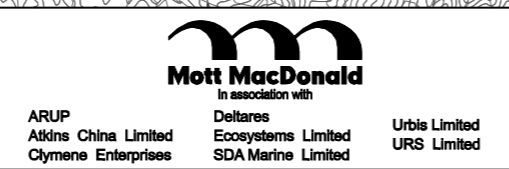
NOTE:
NO CONSTRUCTION WORK AT SHEUNG SHA CHAU ISLAND IN 2018

LEGEND:

- - - - - 500m ASSESSMENT AREA FROM PROJECT SITE BOUNDARY
- - - - - PROJECT SITE BOUNDARY (COMBINED BOUNDARY OF THE PROPOSED LAND FORMATION FOOTPRINT AND EXISTING AIRPORT ISLAND OR BOUNDARY OF THE INDICATIVE PIPELINE DAYLIGHTING LOCATION ON SHEUNG SHA CHAU ISLAND)
- - - - - AQO DAILY CRITERIA ($75 \mu\text{g}/\text{m}^3$)
- CONCRETE AND ASPHALT BATCHING PLANTS, CRUSHING PLANT, STOCKPILES AND HAUL ROADS
- INDICATIVE LOCATION OF HEAVY CONSTRUCTION WORKS AREAS
- X BARGING POINTS

Copyright in this document and all proprietary rights in the information it contains belong to the AA. It is a condition of the supply of this document, in whatever form, that the recipient shall hold it in confidence and shall not duplicate or otherwise reproduce it in whole or in part, nor disclose its contents without the written consent of the AA.

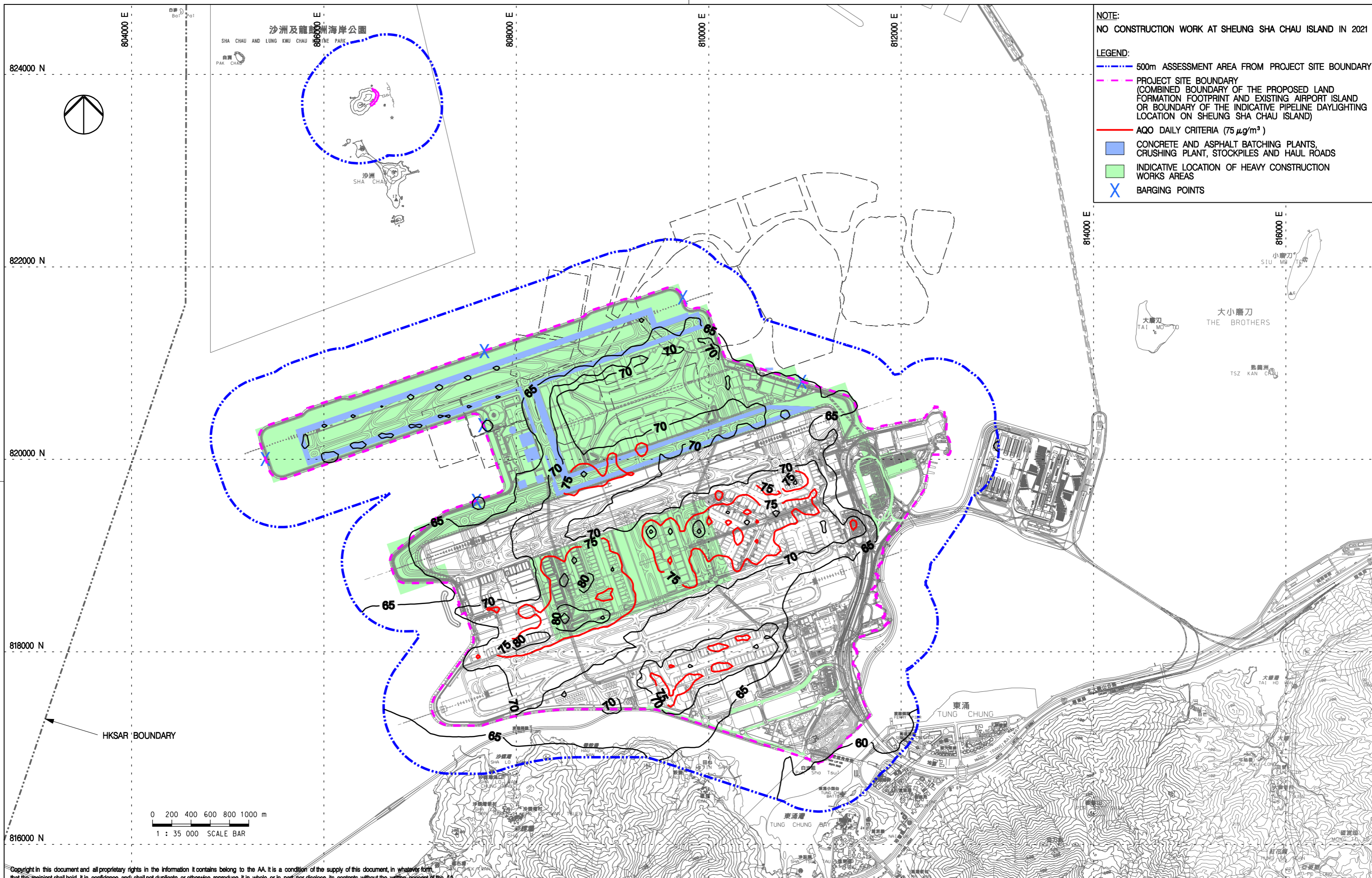
| Rev. | Date | Description | Checked |
|------|---------|------------------|---------|
| A | 20MAR14 | FIRST ISSUE | NN |
| B | 22MAY14 | GENERAL REVISION | NN |



Title
CUMULATIVE RESULT - CONTOUR OF TIER 1 TENTH MAXIMUM DAILY FSP CONCENTRATION ($\mu\text{g}/\text{m}^3$) AT 1.5m ABOVE GROUND AT YEAR 2018 DURING CONSTRUCTION PHASE (MITIGATED)

| Consultant's Signatures for Approval | | Date |
|--------------------------------------|-----|---------|
| Design | NN | 20MAR14 |
| Checkers | NN | 20MAR14 |
| Design Supervisor | EC | 22MAY14 |
| Authorised Representative | AFK | 22MAY14 |

| EXPANSION OF HONG KONG INTERNATIONAL AIRPORT INTO A THREE-RUNWAY SYSTEM | |
|-------------------------------------------------------------------------|----------------------------|
| Drawing No. | MCL / P132 / EIA / 5-2-057 |
| Scale at A3 | 1 : 35000 |
| Rev. | B |



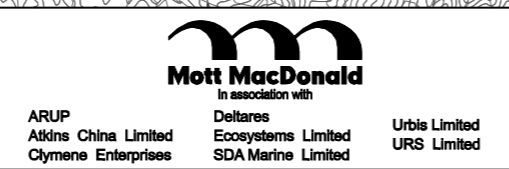
NOTE:
NO CONSTRUCTION WORK AT SHEUNG SHA CHAU ISLAND IN 2021

LEGEND:

- - - - - 500m ASSESSMENT AREA FROM PROJECT SITE BOUNDARY
- - - - - PROJECT SITE BOUNDARY (COMBINED BOUNDARY OF THE PROPOSED LAND FORMATION FOOTPRINT AND EXISTING AIRPORT ISLAND OR BOUNDARY OF THE INDICATIVE PIPELINE DAYLIGHTING LOCATION ON SHEUNG SHA CHAU ISLAND)
- — — — — AQO DAILY CRITERIA ($75 \mu\text{g}/\text{m}^3$)
- CONCRETE AND ASPHALT BATCHING PLANTS, CRUSHING PLANT, STOCKPILES AND HAUL ROADS
- INDICATIVE LOCATION OF HEAVY CONSTRUCTION WORKS AREAS
- X BARGING POINTS

Copyright in this document and all proprietary rights in the information it contains belong to the AA. It is a condition of the supply of this document, in whatever form, that the recipient shall hold it in confidence and shall not duplicate or otherwise reproduce it in whole or in part, nor disclose its contents without the written consent of the AA.

| Rev. | Date | Description | Checked |
|------|---------|------------------|---------|
| A | 20MAR14 | FIRST ISSUE | NN |
| B | 22MAY14 | GENERAL REVISION | NN |



Title
CUMULATIVE RESULT - CONTOUR OF TIER 1 TENTH MAXIMUM DAILY FSP CONCENTRATION ($\mu\text{g}/\text{m}^3$) AT 1.5m ABOVE GROUND AT YEAR 2021 DURING CONSTRUCTION PHASE (MITIGATED)

| Consultant's Signatures for Approval | | Date |
|--------------------------------------|-----|---------|
| Design | NN | 20MAR14 |
| Checkers | NN | 20MAR14 |
| Design Supervisor | EC | 22MAY14 |
| Authorised Representative | AFK | 22MAY14 |

| EXPANSION OF HONG KONG INTERNATIONAL AIRPORT INTO A THREE-RUNWAY SYSTEM | |
|-------------------------------------------------------------------------|----------------------------|
| Drawing No. | MCL / P132 / EIA / 5-2-058 |
| Scale at A3 | 1 : 35000 |
| Rev. | B |