

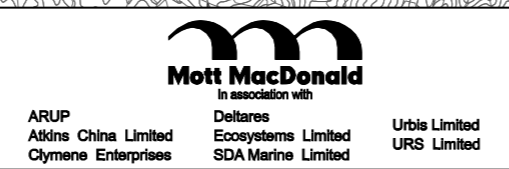
NOTE:
NO CONSTRUCTION WORK AT SHEUNG SHA CHAU ISLAND IN 2018

LEGEND:

- - - - - 500m ASSESSMENT AREA FROM PROJECT SITE BOUNDARY
- - - - - PROJECT SITE BOUNDARY (COMBINED BOUNDARY OF THE PROPOSED LAND FORMATION FOOTPRINT AND EXISTING AIRPORT ISLAND OR BOUNDARY OF THE INDICATIVE PIPELINE DAYLIGHTING LOCATION ON SHEUNG SHA CHAU ISLAND)
- AQO ANNUAL CRITERIA ($50 \mu\text{g}/\text{m}^3$)
- CONCRETE AND ASPHALT BATCHING PLANTS, CRUSHING PLANT, STOCKPILES AND HAUL ROADS
- INDICATIVE LOCATION OF HEAVY CONSTRUCTION WORKS AREAS
- X BARGING POINTS

Copyright in this document and all proprietary rights in the information it contains belong to the AA. It is a condition of the supply of this document, in whatever form, that the recipient shall hold it in confidence and shall not duplicate or otherwise reproduce it in whole or in part, nor disclose its contents without the written consent of the AA.

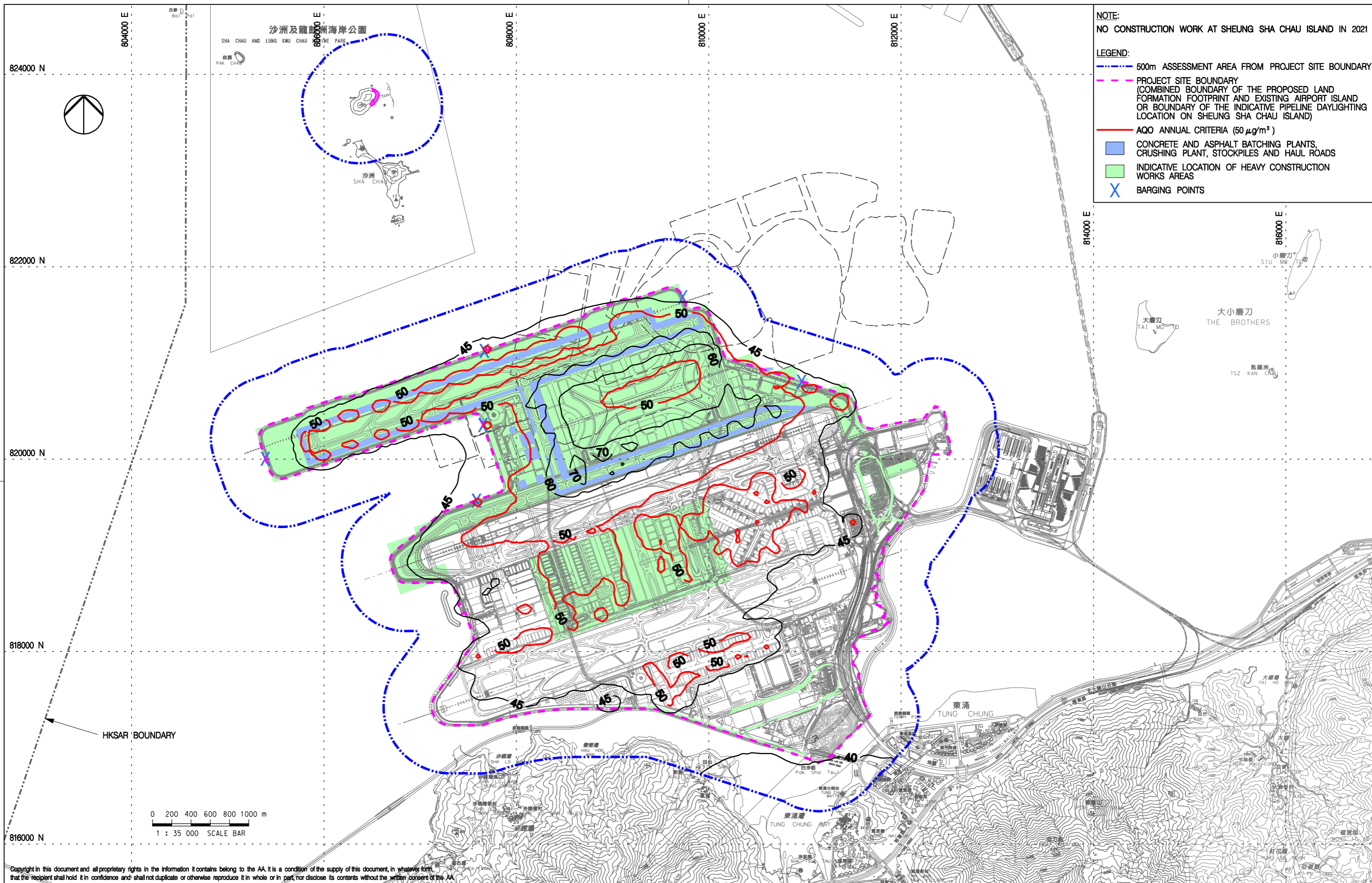
Rev.	Date	Description	Checked
A	20MAR14	FIRST ISSUE	NN
B	22MAY14	GENERAL REVISION	NN



Title
CUMULATIVE RESULT - CONTOUR OF ANNUAL AVERAGE RSP CONCENTRATION ($\mu\text{g}/\text{m}^3$) AT 1.5m ABOVE GROUND AT YEAR 2018 DURING CONSTRUCTION PHASE (UNMITIGATED)

Consultant's Signatures for Approval		Date
Design	NN	20MAR14
Checkers	NN	20MAR14
Design Supervisor	EC	22MAY14
Authorised Representative	AFK	22MAY14

EXPANSION OF HONG KONG INTERNATIONAL AIRPORT INTO A THREE-RUNWAY SYSTEM	
Drawing No.	MCL / P132 / EIA / 5-2-063
Scale at A3	1 : 35000
Rev.	B



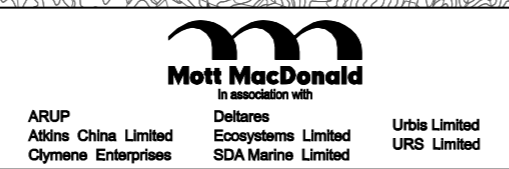
NOTE:
NO CONSTRUCTION WORK AT SHEUNG SHA CHAU ISLAND IN 2021

LEGEND:

- - - - - 500m ASSESSMENT AREA FROM PROJECT SITE BOUNDARY
- - - - - PROJECT SITE BOUNDARY (COMBINED BOUNDARY OF THE PROPOSED LAND FORMATION FOOTPRINT AND EXISTING AIRPORT ISLAND OR BOUNDARY OF THE INDICATIVE PIPELINE DAYLIGHTING LOCATION ON SHEUNG SHA CHAU ISLAND)
- AQO ANNUAL CRITERIA ($50 \mu\text{g}/\text{m}^3$)
- CONCRETE AND ASPHALT BATCHING PLANTS, CRUSHING PLANT, STOCKPILES AND HAUL ROADS
- INDICATIVE LOCATION OF HEAVY CONSTRUCTION WORKS AREAS
- X BARGING POINTS

Copyright in this document and all proprietary rights in the information it contains belong to the AA. It is a condition of the supply of this document, in whatever form, that the recipient shall hold it in confidence and shall not duplicate or otherwise reproduce it in whole or in part, nor disclose its contents without the written consent of the AA.

Rev.	Date	Description	Checked
A	20MAR14	FIRST ISSUE	NN
B	22MAY14	GENERAL REVISION	NN



Title
CUMULATIVE RESULT - CONTOUR OF ANNUAL AVERAGE RSP CONCENTRATION ($\mu\text{g}/\text{m}^3$) AT 1.5m ABOVE GROUND AT YEAR 2021 DURING CONSTRUCTION PHASE (UNMITIGATED)

Consultant's Signatures for Approval		Date
Design	NN	20MAR14
Checkers	NN	20MAR14
Design Supervisor	EC	22MAY14
Authorised Representative	AFK	22MAY14

EXPANSION OF HONG KONG INTERNATIONAL AIRPORT INTO A THREE-RUNWAY SYSTEM	
Drawing No.	MCL / P132 / EIA / 5-2-064
Scale at A3	1 : 35000
Rev.	B



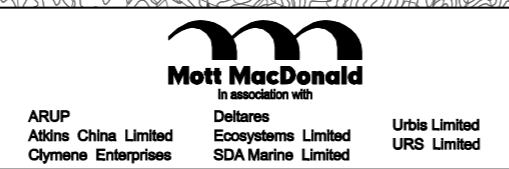
NOTE:
NO CONSTRUCTION WORK AT SHEUNG SHA CHAU ISLAND IN 2018

LEGEND:

- - - - - 500m ASSESSMENT AREA FROM PROJECT SITE BOUNDARY
- - - - - PROJECT SITE BOUNDARY (COMBINED BOUNDARY OF THE PROPOSED LAND FORMATION FOOTPRINT AND EXISTING AIRPORT ISLAND OR BOUNDARY OF THE INDICATIVE PIPELINE DAYLIGHTING LOCATION ON SHEUNG SHA CHAU ISLAND)
- AQO ANNUAL CRITERIA ($50 \mu\text{g}/\text{m}^3$)
- CONCRETE AND ASPHALT BATCHING PLANTS, CRUSHING PLANT, STOCKPILES AND HAUL ROADS
- INDICATIVE LOCATION OF HEAVY CONSTRUCTION WORKS AREAS
- X BARGING POINTS

Copyright in this document and all proprietary rights in the information it contains belong to the AA. It is a condition of the supply of this document, in whatever form, that the recipient shall hold it in confidence and shall not duplicate or otherwise reproduce it in whole or in part, nor disclose its contents without the written consent of the AA.

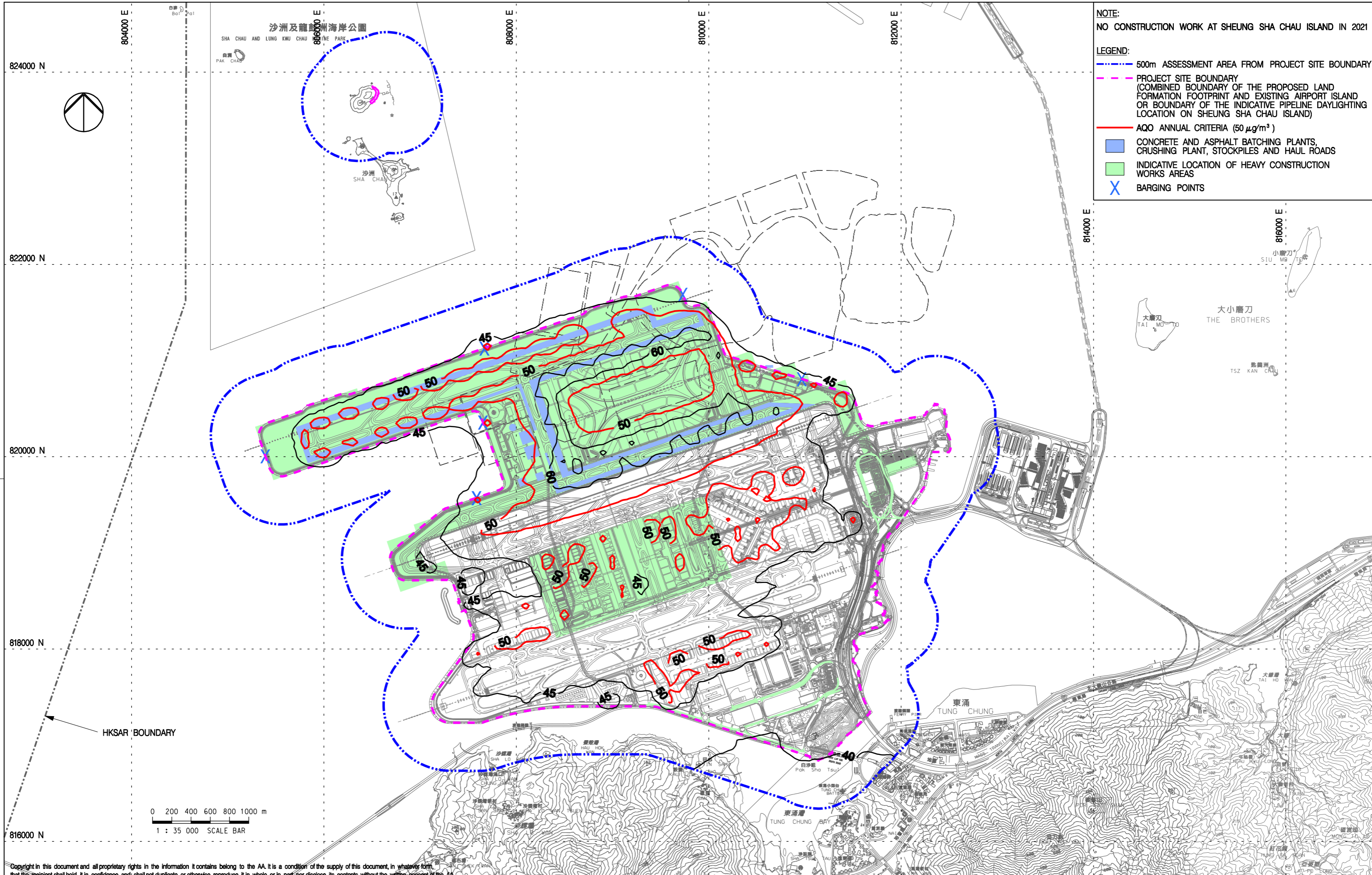
Rev.	Date	Description	Checked
A	20MAR14	FIRST ISSUE	NN
B	22MAY14	GENERAL REVISION	NN



Title
CUMULATIVE RESULT - CONTOUR OF ANNUAL AVERAGE RSP CONCENTRATION ($\mu\text{g}/\text{m}^3$) AT 1.5m ABOVE GROUND AT YEAR 2018 DURING CONSTRUCTION PHASE (MITIGATED)

Consultant's Signatures for Approval		Date
Design	NN	20MAR14
Checkers	NN	20MAR14
Design Supervisor	EC	22MAY14
Authorised Representative	AFK	22MAY14

EXPANSION OF HONG KONG INTERNATIONAL AIRPORT INTO A THREE-RUNWAY SYSTEM	
Drawing No.	MCL / P132 / EIA / 5-2-065
Scale at A3	1 : 35000
Rev.	B



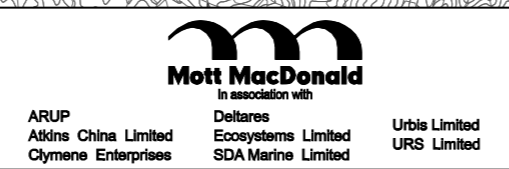
NOTE:
NO CONSTRUCTION WORK AT SHEUNG SHA CHAU ISLAND IN 2021

LEGEND:

- - - - - 500m ASSESSMENT AREA FROM PROJECT SITE BOUNDARY
- - - - - PROJECT SITE BOUNDARY (COMBINED BOUNDARY OF THE PROPOSED LAND FORMATION FOOTPRINT AND EXISTING AIRPORT ISLAND OR BOUNDARY OF THE INDICATIVE PIPELINE DAYLIGHTING LOCATION ON SHEUNG SHA CHAU ISLAND)
- — — — — AQO ANNUAL CRITERIA ($50 \mu\text{g}/\text{m}^3$)
- CONCRETE AND ASPHALT BATCHING PLANTS, CRUSHING PLANT, STOCKPILES AND HAUL ROADS
- INDICATIVE LOCATION OF HEAVY CONSTRUCTION WORKS AREAS
- X BARGING POINTS

Copyright in this document and all proprietary rights in the information it contains belong to the AA. It is a condition of the supply of this document, in whatever form, that the recipient shall hold it in confidence and shall not duplicate or otherwise reproduce it in whole or in part, nor disclose its contents without the written consent of the AA.

Rev.	Date	Description	Checked
A	20MAR14	FIRST ISSUE	NN
B	22MAY14	GENERAL REVISION	NN



Title
CUMULATIVE RESULT - CONTOUR OF ANNUAL AVERAGE RSP CONCENTRATION ($\mu\text{g}/\text{m}^3$) AT 1.5m ABOVE GROUND AT YEAR 2021 DURING CONSTRUCTION PHASE (MITIGATED)

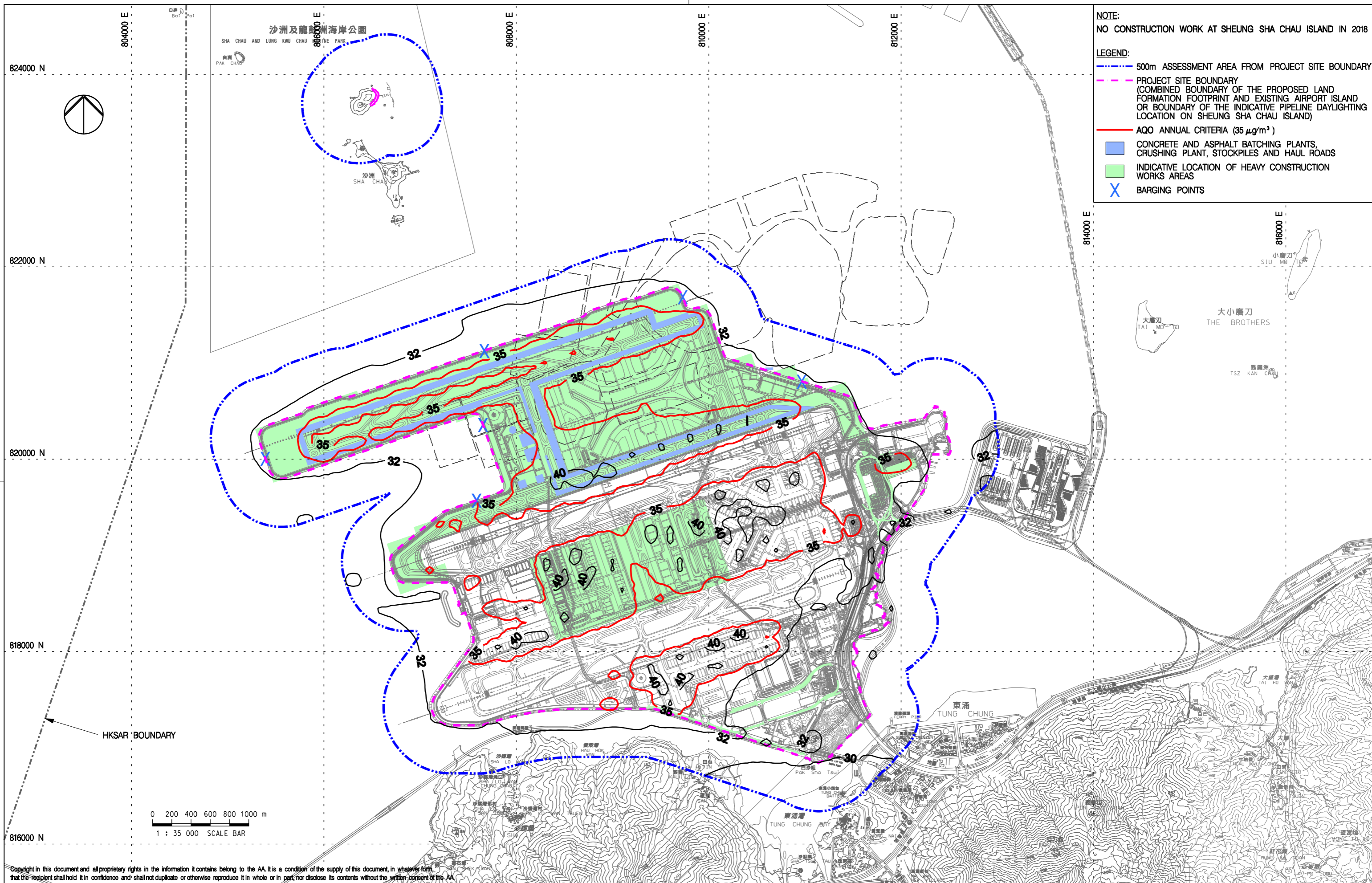
Consultant's Signatures for Approval		Date
Design	NN	20MAR14
Checkers	NN	20MAR14
Design Supervisor	EC	22MAY14
Authorised Representative	AFK	22MAY14

EXPANSION OF HONG KONG INTERNATIONAL AIRPORT INTO A THREE-RUNWAY SYSTEM

Drawing No. **MCL / P132 / EIA / 5-2-066**

Scale at A3 **1 : 35000**

Rev. **B**



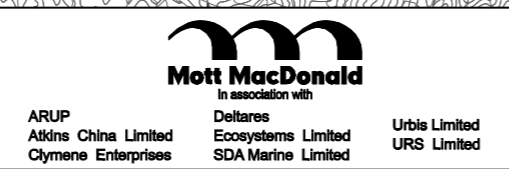
NOTE:
NO CONSTRUCTION WORK AT SHEUNG SHA CHAU ISLAND IN 2018

LEGEND:

- - - 500m ASSESSMENT AREA FROM PROJECT SITE BOUNDARY
- - - PROJECT SITE BOUNDARY (COMBINED BOUNDARY OF THE PROPOSED LAND FORMATION FOOTPRINT AND EXISTING AIRPORT ISLAND OR BOUNDARY OF THE INDICATIVE PIPELINE DAYLIGHTING LOCATION ON SHEUNG SHA CHAU ISLAND)
- AQO ANNUAL CRITERIA ($35 \mu\text{g}/\text{m}^3$)
- CONCRETE AND ASPHALT BATCHING PLANTS, CRUSHING PLANT, STOCKPILES AND HAUL ROADS
- INDICATIVE LOCATION OF HEAVY CONSTRUCTION WORKS AREAS
- X BARGING POINTS

Copyright in this document and all proprietary rights in the information it contains belong to the AA. It is a condition of the supply of this document, in whatever form, that the recipient shall hold it in confidence and shall not duplicate or otherwise reproduce it in whole or in part, nor disclose its contents without the written consent of the AA.

Rev.	Date	Description	Checked
A	20MAR14	FIRST ISSUE	NN
B	22MAY14	GENERAL REVISION	NN



Title
CUMULATIVE RESULT - CONTOUR OF ANNUAL AVERAGE FSP CONCENTRATION ($\mu\text{g}/\text{m}^3$) AT 1.5m ABOVE GROUND AT YEAR 2018 DURING CONSTRUCTION PHASE (UNMITIGATED)

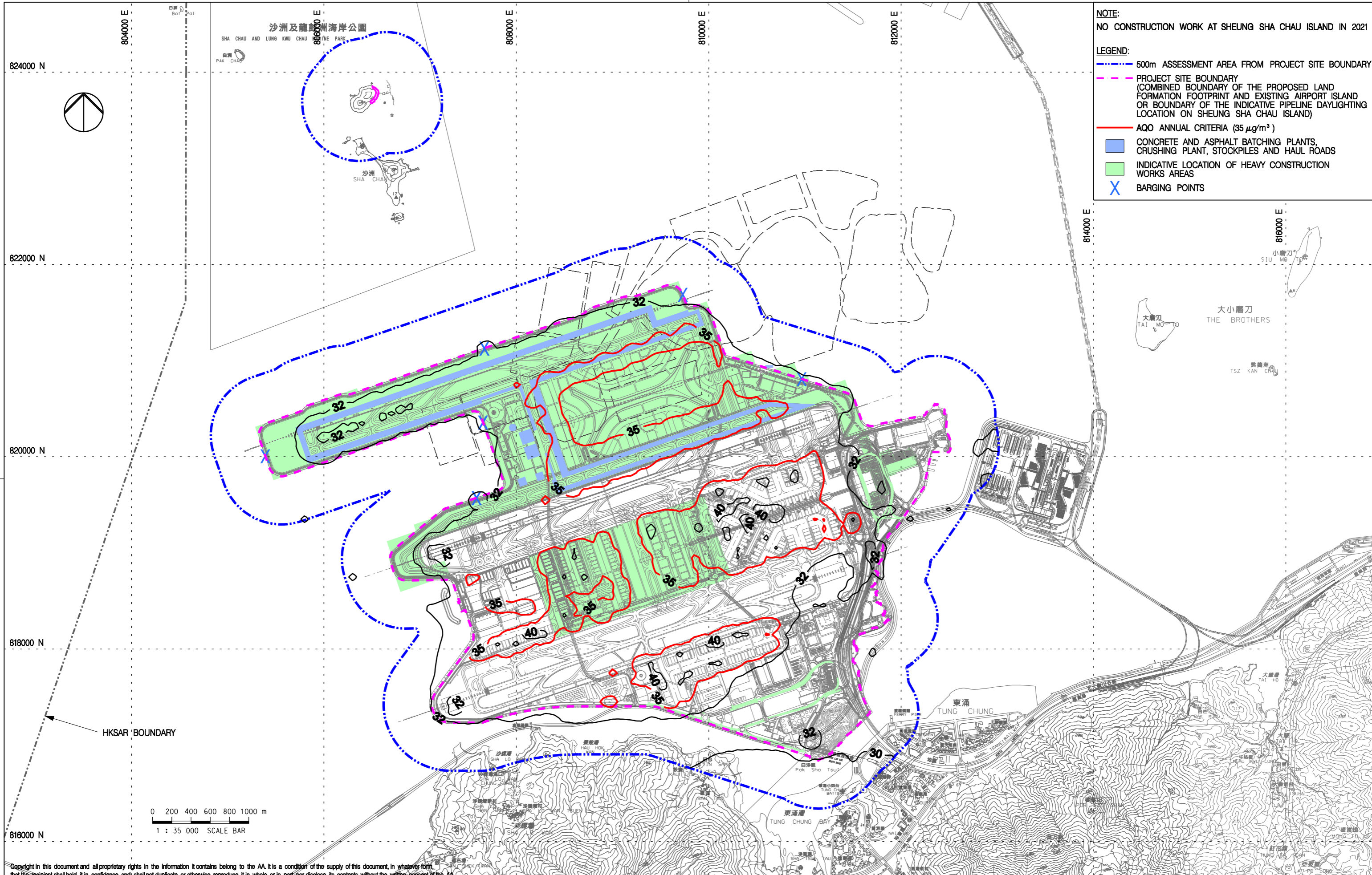
Consultant's Signatures for Approval		Date
Design	NN	20MAR14
Checkers	NN	20MAR14
Design Supervisor	EC	22MAY14
Authorised Representative	AFK	22MAY14

EXPANSION OF HONG KONG INTERNATIONAL AIRPORT INTO A THREE-RUNWAY SYSTEM

Drawing No. **MCL / P132 / EIA / 5-2-067**

Scale at A3 **1 : 35000**

Rev. **B**



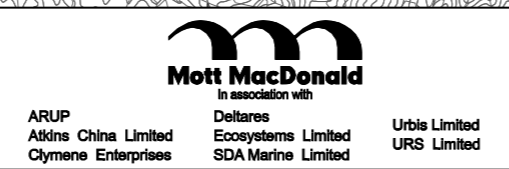
NOTE:
NO CONSTRUCTION WORK AT SHEUNG SHA CHAU ISLAND IN 2021

LEGEND:

- - - - 500m ASSESSMENT AREA FROM PROJECT SITE BOUNDARY
- - - - PROJECT SITE BOUNDARY (COMBINED BOUNDARY OF THE PROPOSED LAND FORMATION FOOTPRINT AND EXISTING AIRPORT ISLAND OR BOUNDARY OF THE INDICATIVE PIPELINE DAYLIGHTING LOCATION ON SHEUNG SHA CHAU ISLAND)
- — — — AQO ANNUAL CRITERIA ($35 \mu\text{g}/\text{m}^3$)
- CONCRETE AND ASPHALT BATCHING PLANTS, CRUSHING PLANT, STOCKPILES AND HAUL ROADS
- INDICATIVE LOCATION OF HEAVY CONSTRUCTION WORKS AREAS
- X BARGING POINTS

Copyright in this document and all proprietary rights in the information it contains belong to the AA. It is a condition of the supply of this document, in whatever form, that the recipient shall hold it in confidence and shall not duplicate or otherwise reproduce it in whole or in part, nor disclose its contents without the written consent of the AA.

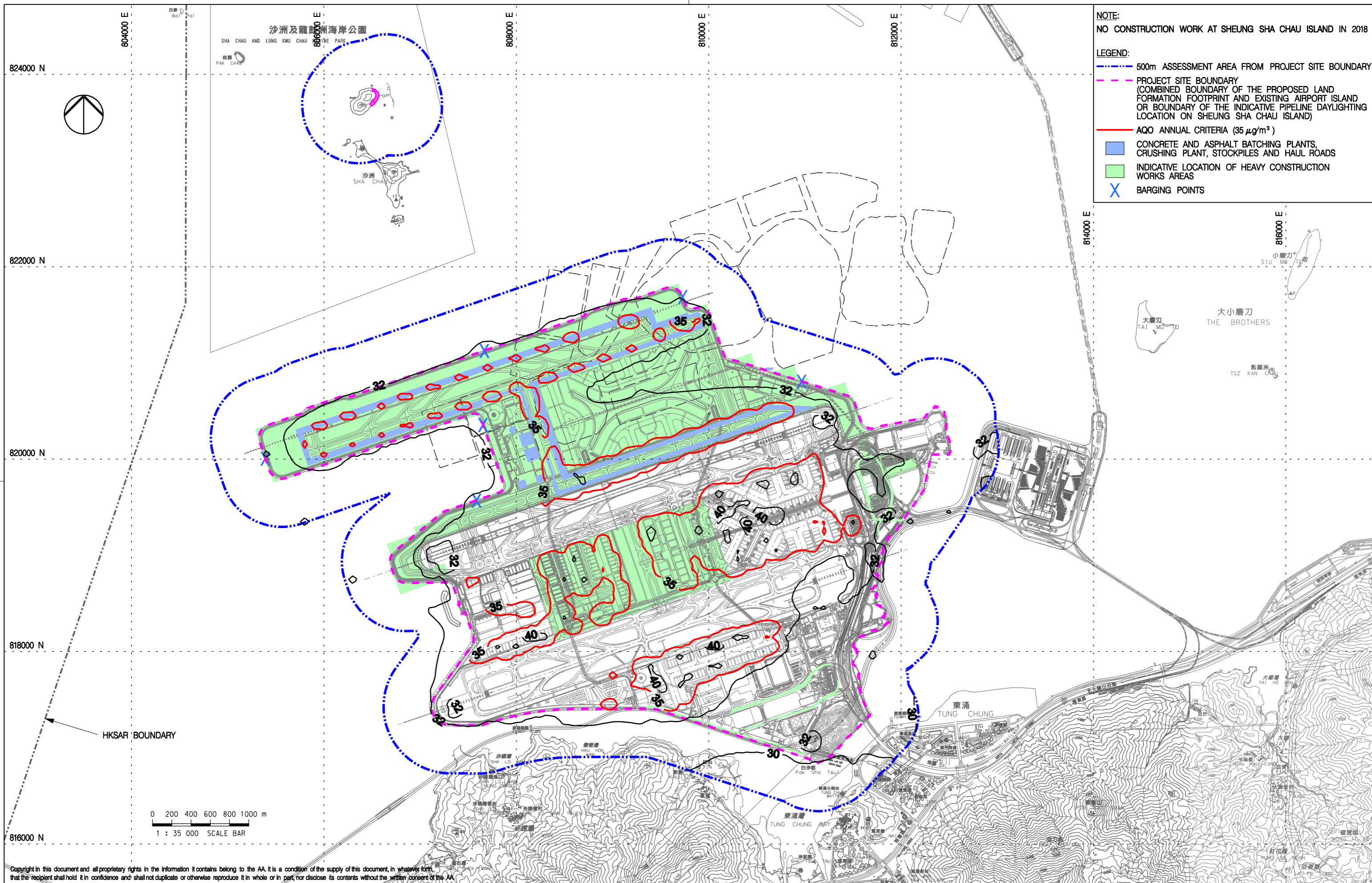
Rev.	Date	Description	Checked
A	20MAR14	FIRST ISSUE	NN
B	22MAY14	GENERAL REVISION	NN



Title
CUMULATIVE RESULT - CONTOUR OF ANNUAL AVERAGE FSP CONCENTRATION ($\mu\text{g}/\text{m}^3$) AT 1.5m ABOVE GROUND AT YEAR 2021 DURING CONSTRUCTION PHASE (UNMITIGATED)

Consultant's Signatures for Approval		Date
Design	NN	20MAR14
Checkers	NN	20MAR14
Design Supervisor	EC	22MAY14
Authorised Representative	AFK	22MAY14

EXPANSION OF HONG KONG INTERNATIONAL AIRPORT INTO A THREE-RUNWAY SYSTEM	
Drawing No.	MCL / P132 / EIA / 5-2-068
Scale at A3	1 : 35000
Rev.	B



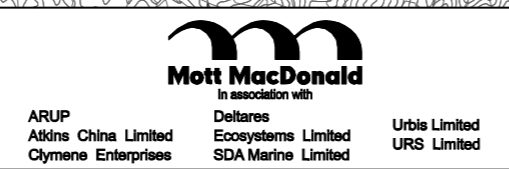
NOTE:
NO CONSTRUCTION WORK AT SHEUNG SHA CHAU ISLAND IN 2018

LEGEND:

- - - - - 500m ASSESSMENT AREA FROM PROJECT SITE BOUNDARY
- - - - - PROJECT SITE BOUNDARY (COMBINED BOUNDARY OF THE PROPOSED LAND FORMATION FOOTPRINT AND EXISTING AIRPORT ISLAND OR BOUNDARY OF THE INDICATIVE PIPELINE DAYLIGHTING LOCATION ON SHEUNG SHA CHAU ISLAND)
- - - - - AQO ANNUAL CRITERIA ($35 \mu\text{g}/\text{m}^3$)
- CONCRETE AND ASPHALT BATCHING PLANTS, CRUSHING PLANT, STOCKPILES AND HAUL ROADS
- INDICATIVE LOCATION OF HEAVY CONSTRUCTION WORKS AREAS
- X BARGING POINTS

Copyright in this document and all proprietary rights in the information it contains belong to the AA. It is a condition of the supply of this document, in whatever form, that the recipient shall hold it in confidence and shall not duplicate or otherwise reproduce it in whole or in part, nor disclose its contents without the written consent of the AA.

Rev.	Date	Description	Checked
A	20MAR14	FIRST ISSUE	NN
B	22MAY14	GENERAL REVISION	NN



Title
CUMULATIVE RESULT - CONTOUR OF ANNUAL AVERAGE FSP CONCENTRATION ($\mu\text{g}/\text{m}^3$) AT 1.5m ABOVE GROUND AT YEAR 2018 DURING CONSTRUCTION PHASE (MITIGATED)

Consultant's Signatures for Approval		Date
Design	NN	20MAR14
Checkers	NN	20MAR14
Design Supervisor	EC	22MAY14
Authorised Representative	AFK	22MAY14

EXPANSION OF HONG KONG INTERNATIONAL AIRPORT INTO A THREE-RUNWAY SYSTEM

Drawing No. **MCL / P132 / EIA / 5-2-069**

Scale at A3 **1 : 35000**

Rev. **B**



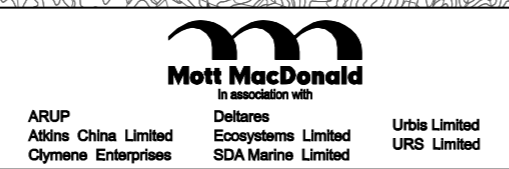
NOTE:
NO CONSTRUCTION WORK AT SHEUNG SHA CHAU ISLAND IN 2021

LEGEND:

- - - - - 500m ASSESSMENT AREA FROM PROJECT SITE BOUNDARY
- - - - - PROJECT SITE BOUNDARY (COMBINED BOUNDARY OF THE PROPOSED LAND FORMATION FOOTPRINT AND EXISTING AIRPORT ISLAND OR BOUNDARY OF THE INDICATIVE PIPELINE DAYLIGHTING LOCATION ON SHEUNG SHA CHAU ISLAND)
- - - - - AQO ANNUAL CRITERIA ($35 \mu\text{g}/\text{m}^3$)
- CONCRETE AND ASPHALT BATCHING PLANTS, CRUSHING PLANT, STOCKPILES AND HAUL ROADS
- INDICATIVE LOCATION OF HEAVY CONSTRUCTION WORKS AREAS
- X BARGING POINTS

Copyright in this document and all proprietary rights in the information it contains belong to the AA. It is a condition of the supply of this document, in whatever form, that the recipient shall hold it in confidence and shall not duplicate or otherwise reproduce it in whole or in part, nor disclose its contents without the written consent of the AA.

Rev.	Date	Description	Checked
A	20MAR14	FIRST ISSUE	NN
B	22MAY14	GENERAL REVISION	NN



Title
CUMULATIVE RESULT - CONTOUR OF ANNUAL AVERAGE FSP CONCENTRATION ($\mu\text{g}/\text{m}^3$) AT 1.5m ABOVE GROUND AT YEAR 2021 DURING CONSTRUCTION PHASE (MITIGATED)

Consultant's Signatures for Approval		Date
Design	NN	20MAR14
Checkers	NN	20MAR14
Design Supervisor	EC	22MAY14
Authorised Representative	AFK	22MAY14

EXPANSION OF HONG KONG INTERNATIONAL AIRPORT INTO A THREE-RUNWAY SYSTEM

Drawing No. **MCL / P132 / EIA / 5-2-070**

Scale at A3 **1 : 35000**

Rev. **B**