
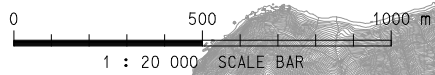
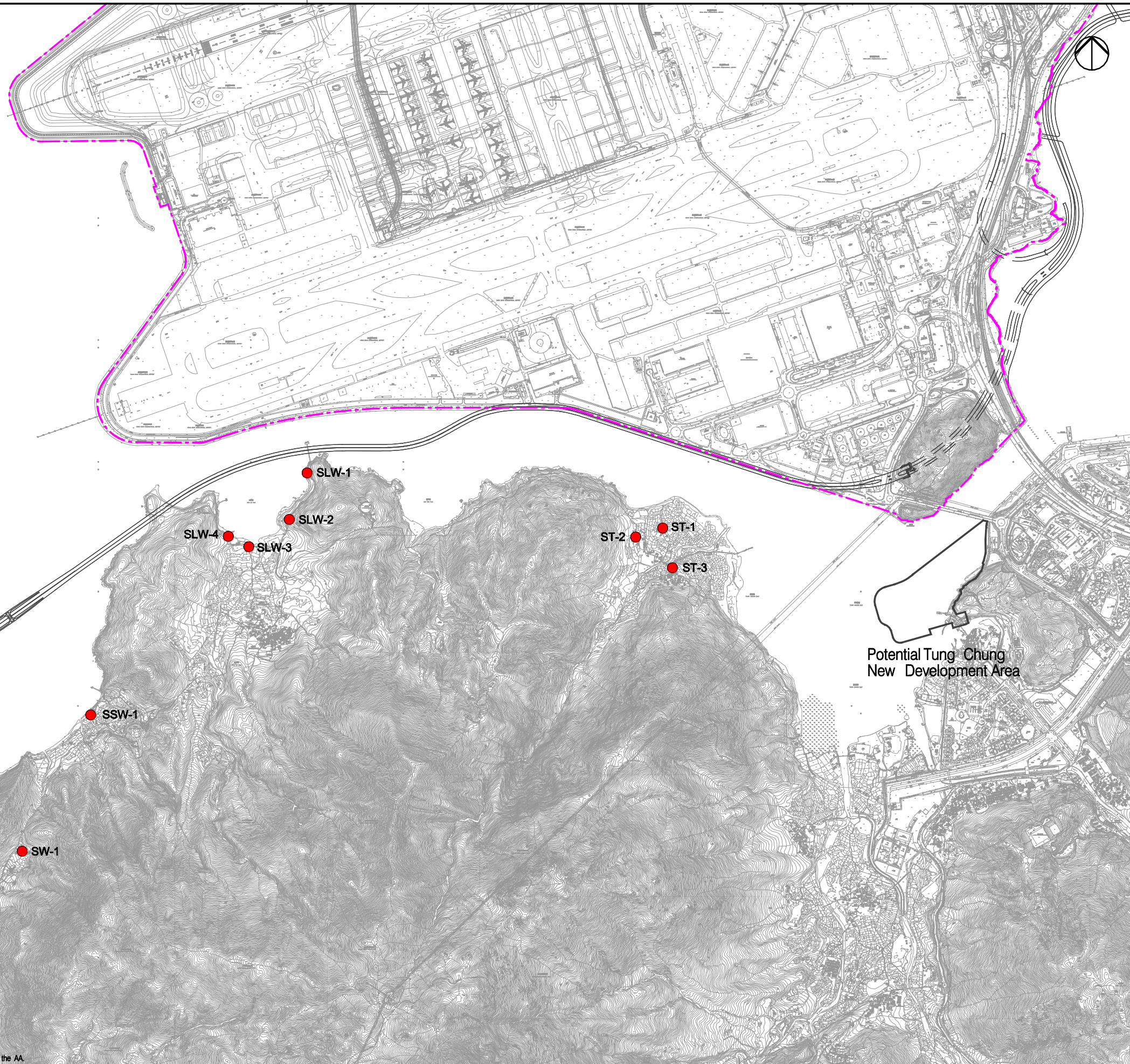


Legend

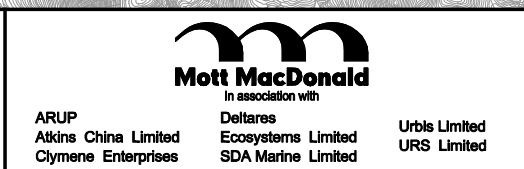
 Project Site Boundary  
(Combined Boundary of the  
Proposed Land Formation Footprint  
and Existing Airport Island)

 Air Sensitive Receiver



Copyright in this document and all proprietary rights in the information it contains belong to the AA. It is a condition of the supply of this document, in whatever form, that the recipient shall hold it in confidence and shall not duplicate or otherwise reproduce it in whole or in part, nor disclose its contents without the written consent of the AA.

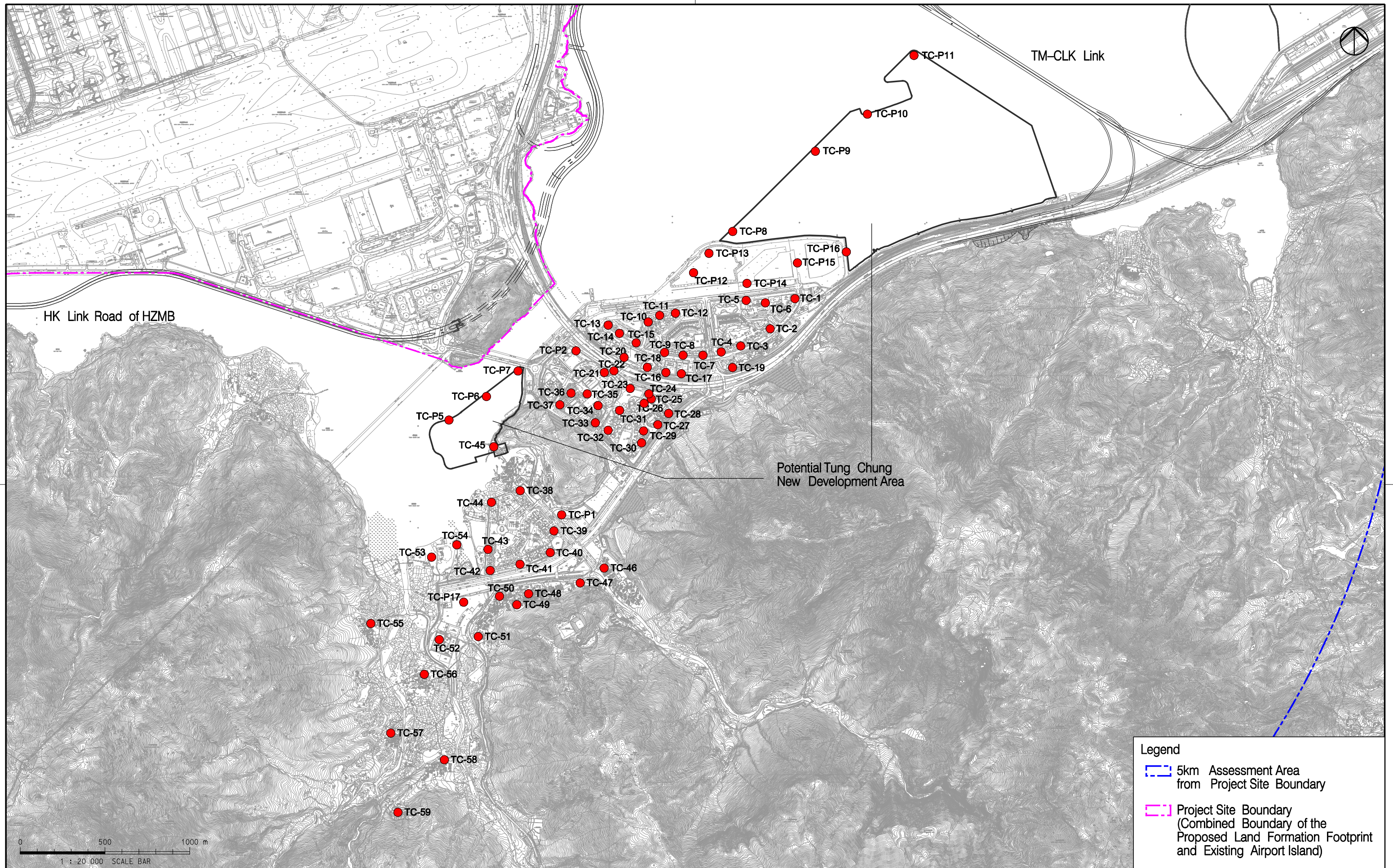
Rev.	Date	Description	Checked
A	02MAY13	FIRST ISSUE	GK
B	23AUG13	SECOND ISSUE	GK
C	23OCT13	THIRD ISSUE	GK
D	26JAN14	FOURTH ISSUE	GK
E	24MAR14	FIFTH ISSUE	GK



Title  
**Locations of Operational Phase  
Air Sensitive Receivers (Lantau West)**

Consultant's Signatures for Approval		Date
Design	GL	24MAR14
Checkers	GK	24MAR14
Design Supervisor	EC	24MAR14
Authorised Representative	AFK	24MAR14

EXPANSION OF HONG KONG INTERNATIONAL AIRPORT INTO A THREE-RUNWAY SYSTEM	
Drawing No.	MCL /P132 /EIA /5-3-002
Scale at A3	1:20000
Rev.	E



**Legend**

- 5km Assessment Area from Project Site Boundary
- Project Site Boundary (Combined Boundary of the Proposed Land Formation Footprint and Existing Airport Island)
- Air Sensitive Receiver

Copyright in this document and all proprietary rights in the information it contains belong to the AA. It is a condition of the supply of this document, in whatever form, that the recipient shall hold it in confidence and shall not duplicate or otherwise reproduce it in whole or in part, nor disclose its contents without the written consent of the AA.

Rev.	Date	Description	Checked
A	02MAY13	FIRST ISSUE	GK
B	23AUG13	SECOND ISSUE	GK
C	23OCT13	THIRD ISSUE	GK
D	26JAN14	FOURTH ISSUE	GK
E	24MAR14	FIFTH ISSUE	GK



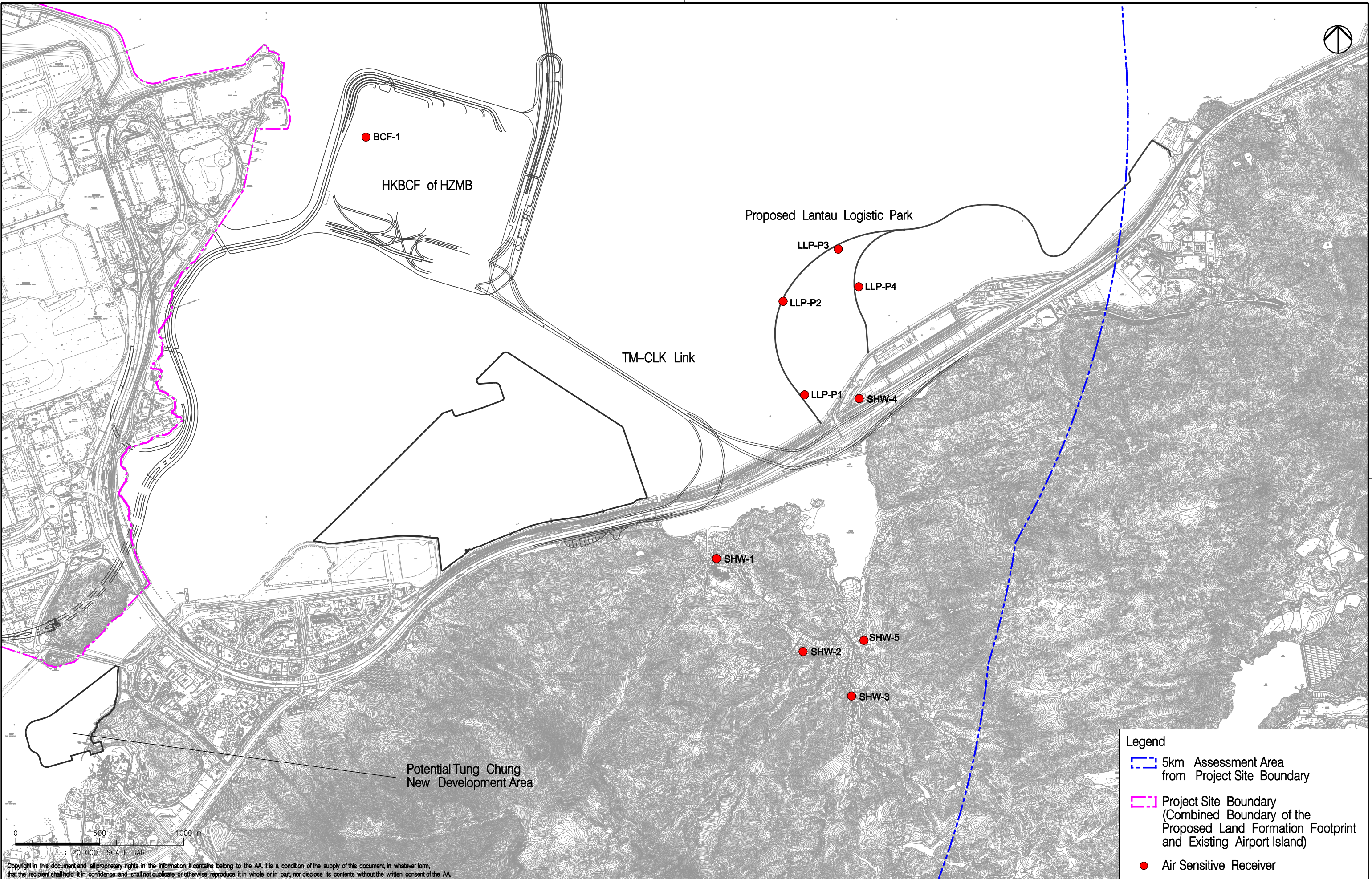
**Mott MacDonald**  
In association with

ARUP	Deltares	Urbis Limited
Atkins China Limited	Ecosystems Limited	URS Limited
Clymene Enterprises	SDA Marine Limited	

Title  
**Locations of Operational Phase  
Air Sensitive Receivers (Lantau East)**

Consultant's Signatures for Approval		Date
Design	GL	24MAR14
Checkers	GK	24MAR14
Design Supervisor	EC	24MAR14
Authorised Representative	AFK	24MAR14

EXPANSION OF HONG KONG INTERNATIONAL AIRPORT INTO A THREE-RUNWAY SYSTEM		Scale at A3 1:20000
Drawing No.	MCL /P132 /EIA /5-3-003	Rev. E



**Legend**

- 5km Assessment Area from Project Site Boundary
- Project Site Boundary (Combined Boundary of the Proposed Land Formation Footprint and Existing Airport Island)
- Air Sensitive Receiver

Copyright in this document and all proprietary rights in the information it contains belong to the AA. It is a condition of the supply of this document, in whatever form, that the recipient shall hold it in confidence and shall not duplicate or otherwise reproduce it in whole or in part, nor disclose its contents without the written consent of the AA.

Rev.	Date	Description	Checked
B	23AUG13	SECOND ISSUE	GK
C	23OCT13	THIRD ISSUE	GK
D	26JAN14	FOURTH ISSUE	GK
E	06MAR14	FIFTH ISSUE	GK
F	24MAR14	SIXTH ISSUE	GK



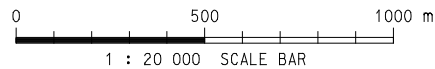
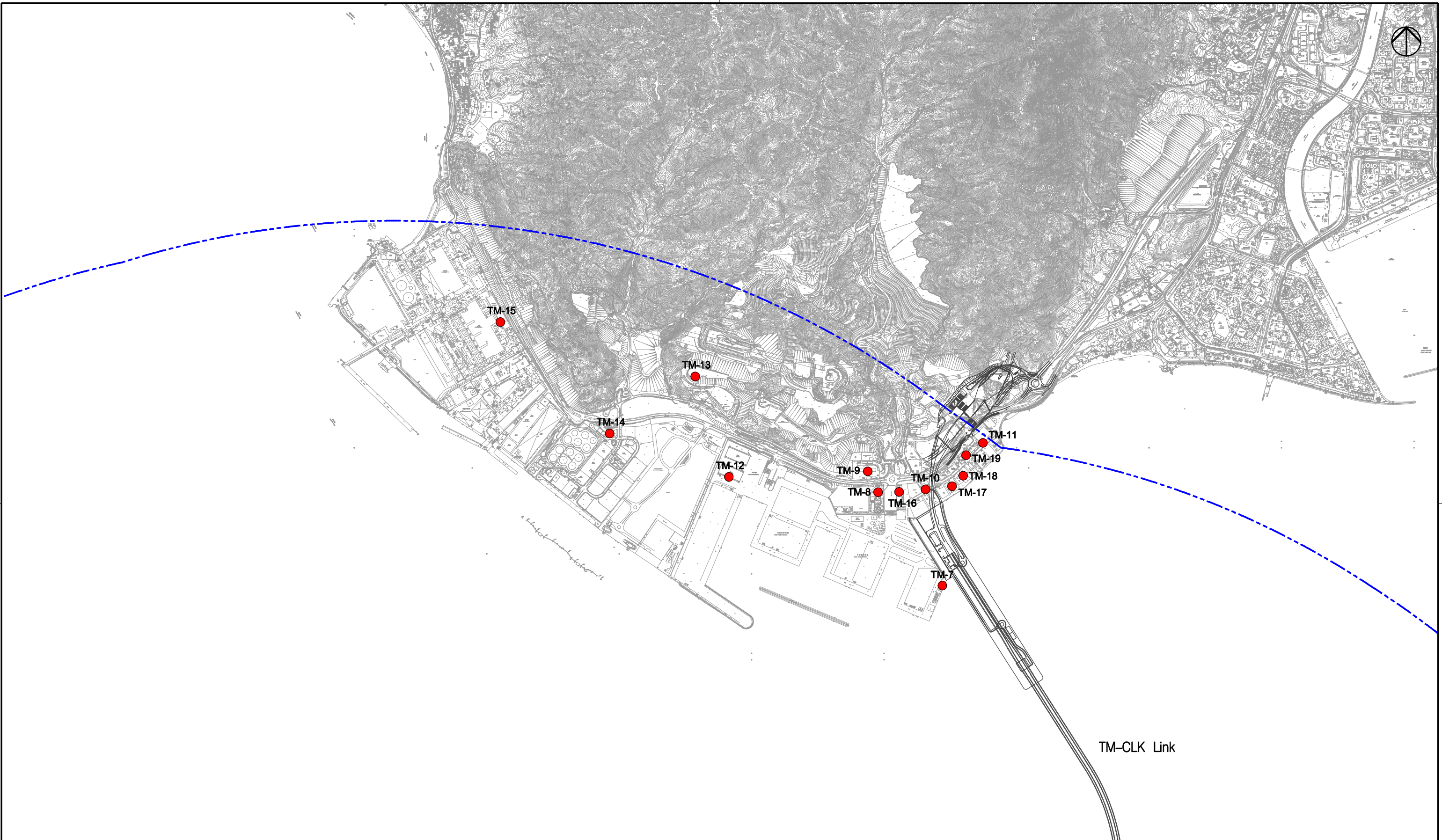
**Mott MacDonald**  
In association with

ARUP	Deltares	Urbis Limited
Atkins China Limited	Ecosystems Limited	URS Limited
Clymene Enterprises	SDA Marine Limited	

Title  
**Locations of Operational Phase Air Sensitive Receivers (Siu Ho Wan)**

Consultant's Signatures for Approval		Date
Design	GL	24MAR14
Checkers	GK	24MAR14
Design Supervisor	EC	24MAR14
Authorised Representative	AFK	24MAR14

EXPANSION OF HONG KONG INTERNATIONAL AIRPORT INTO A THREE-RUNWAY SYSTEM	
Drawing No.	Scale at A3
<b>MCL /P132 /EIA /5-3-004</b>	<b>1:20000</b>
	Rev. <b>F</b>



Copyright in this document and all proprietary rights in the information it contains belong to the AA. It is a condition of the supply of this document, in whatever form, that the recipient shall hold it in confidence and shall not duplicate or otherwise reproduce it in whole or in part, nor disclose its contents without the written consent of the AA.

Legend	
	5km Assessment Area from Project Site Boundary
	Air Sensitive Receiver

Rev.	Date	Description	Checked
A	02MAY13	FIRST ISSUE	GK
B	23AUG13	SECOND ISSUE	GK
C	23OCT13	THIRD ISSUE	GK
D	26JAN14	FOURTH ISSUE	GK
E	24MAR14	FIFTH ISSUE	GK



**Mott MacDonald**  
In association with

ARUP	Deltares	Urbis Limited
Atkins China Limited	Ecosystems Limited	URS Limited
Clymene Enterprises	SDA Marine Limited	

Title  
**Locations of Operational Phase  
Air Sensitive Receivers (Tuen Mun)**

Consultant's Signatures for Approval		Date
Design	GL	24MAR14
Checkers	GK	24MAR14
Design Supervisor	EC	24MAR14
Authorised Representative	AFK	24MAR14

EXPANSION OF HONG KONG INTERNATIONAL AIRPORT INTO A THREE-RUNWAY SYSTEM		Scale at A3 1:20000
Drawing No.	MCL /P132 /EIA /5-3-005	Rev. E