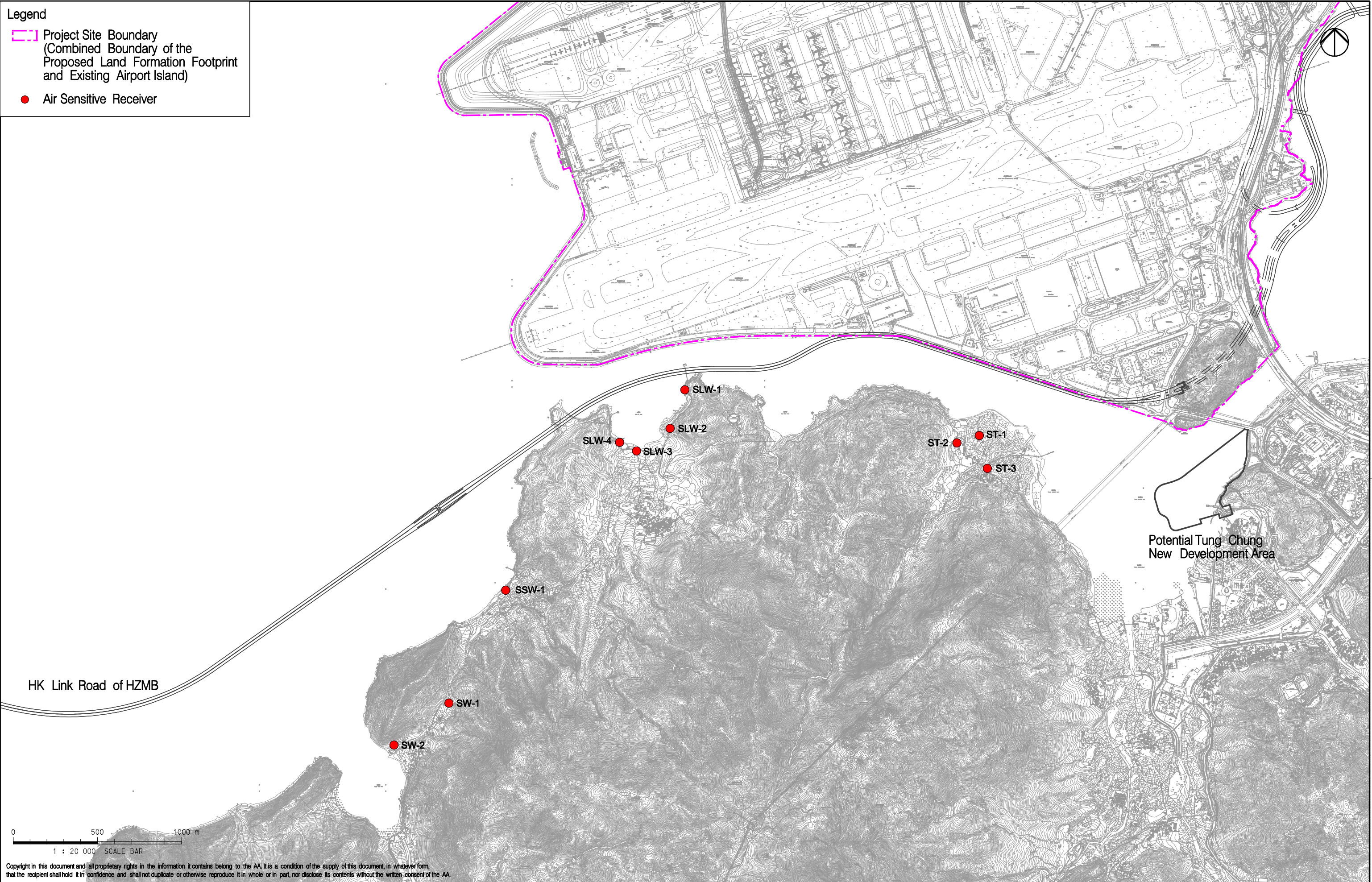




Legend

Project Site Boundary  
(Combined Boundary of the  
Proposed Land Formation Footprint  
and Existing Airport Island)

Air Sensitive Receiver



Copyright in this document and all proprietary rights in the information it contains belong to the AA. It is a condition of the supply of this document, in whatever form, that the recipient shall hold it in confidence and shall not duplicate or otherwise reproduce it in whole or in part, nor disclose its contents without the written consent of the AA.

Rev.	Date	Description	Checked	 Mott MacDonald In association with			Title  Locations of Operational Phase Air Sensitive Receivers (Lantau West)	Consultant's Signatures for Approval		Date	EXPANSION OF HONG KONG INTERNATIONAL AIRPORT INTO A THREE-RUNWAY SYSTEM		
A	02MAY13	FIRST ISSUE	GK	 HONG KONG INTERNATIONAL AIRPORT 香港國際機場 <small>Airport Authority 190A, Tower 1 Sky Plaza Road, Hong Kong International Airport, Lantau, Hong Kong Tel.: (852) 2569 7111 Fax.: (852) 2804 0717</small>	ARUP Atkins China Limited Clymene Enterprises	Deltares Ecosystems Limited SDA Marine Limited		Urbis Limited URS Limited	Design	GL	24MAR14	Drawing No.  MCL /P132 /EIA /5-3-002	Scale at A3 1:20000 Rev. E
B	23AUG13	SECOND ISSUE	GK						Checkers	GK	24MAR14		
C	23OCT13	THIRD ISSUE	GK						Design Supervisor	EC	24MAR14		
D	26JAN14	FOURTH ISSUE	GK						Authorised Representative	AFK	24MAR14		
E	24MAR14	FIFTH ISSUE	GK										