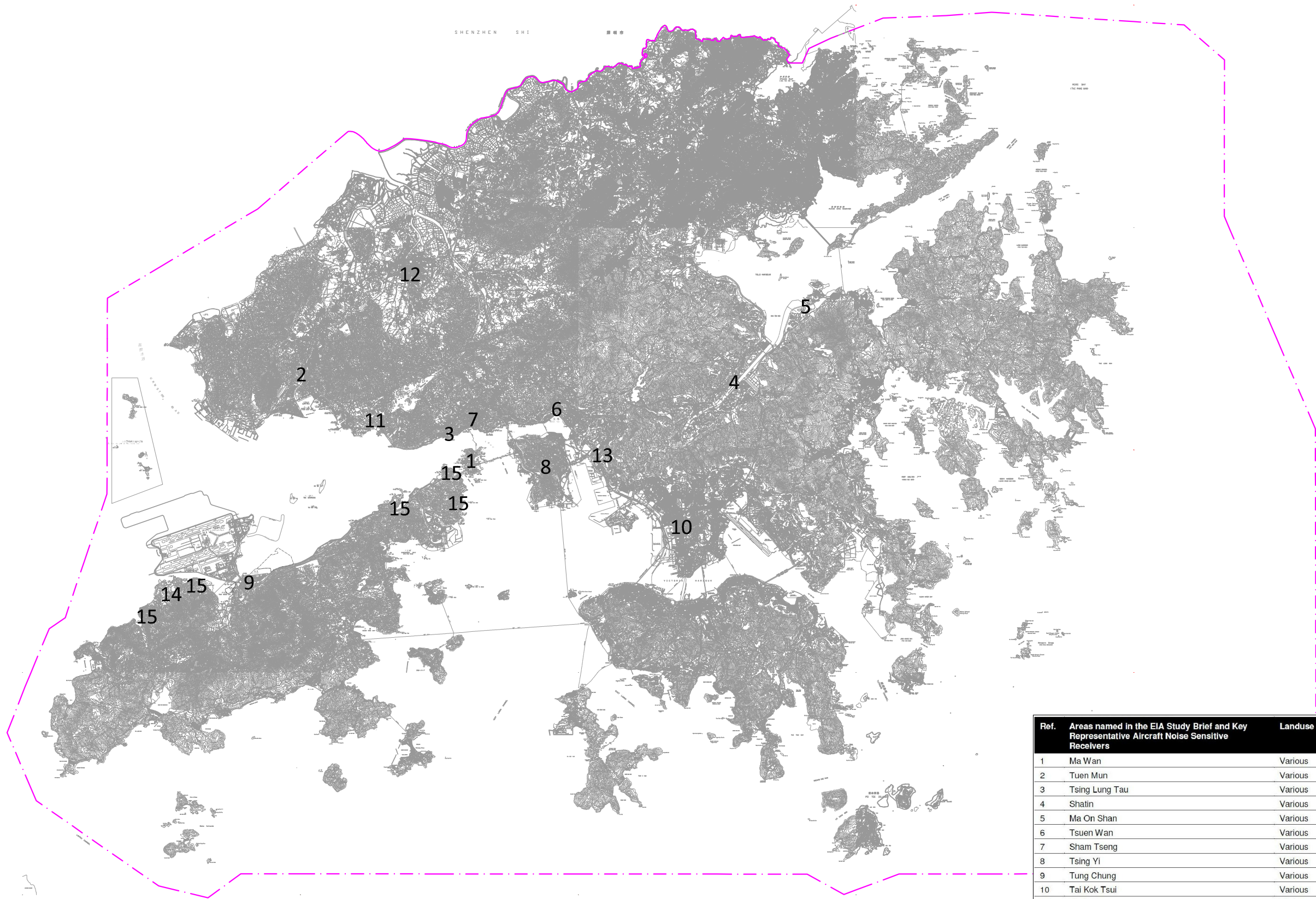


# Aircraft Noise Sensitive Receivers



Ref.	Areas named in the EIA Study Brief and Key Representative Aircraft Noise Sensitive Receivers	Landuse Type	No. of Storeys	Approximate Distance from the Project Site (m)
1	Ma Wan	Various	Multi	> 10,000
2	Tuen Mun	Various	Multi	8,000
3	Tsing Lung Tau	Various	Multi	> 10,000
4	Shatin	Various	Multi	> 10,000
5	Ma On Shan	Various	Multi	> 10,000
6	Tsuen Wan	Various	Multi	> 10,000
7	Sham Tseng	Various	Multi	> 10,000
8	Tsing Yi	Various	Multi	> 10,000
9	Tung Chung	Various	Multi	1,800
10	Tai Kok Tsui	Various	Multi	> 10,000
11	Siu Lam	Various	Multi	> 10,000
12	Yuen Long	Various	Multi	> 10,000
13	Kwai Chung	Various	Multi	> 10,000
14	Sha Lo Wan	Various	Multi	1,200
15	North Lantau Villages	Various	Multi	Various

Copyright in this document and all proprietary rights in the information it contains belong to the AA. It is a condition of the supply of this document, in whatever form, that the recipient shall hold it in confidence and shall not duplicate or otherwise reproduce it in whole or in part, nor disclose its contents without the written consent of the AA.

Rev.	Date	Description	Checked
A	7FEB14	THIRD DRAFT	TWKW
B	11MAR14	FINAL	TWKW



香港國際機場  
HONG KONG INTERNATIONAL AIRPORT  
Airport Authority HQA Tower, 1 Sky Plaza Road, Hong Kong International Airport, Lantau, Hong Kong Tel : (852) 2188 7111 Fax : (852) 2824 0717



Mott MacDonald  
In association with

ARUP  
Atkins China Limited  
Clymene Enterprises

Deltares  
Ecosystems Limited  
SDA Marine Limited

Urbis Limited  
URS Hong Kong Ltd

Title

**Key Representative Aircraft Noise Sensitive Receivers**

Consultant's Signatures for Approval		Date	EXPANSION OF HONG KONG INTERNATIONAL AIRPORT INTO A THREE-RUNWAY SYSTEM	
Design	HC	13SEP13	Drawing No. <b>MCL/P132/EIA/7-3-002</b>	Scale at A3 AS
Checkers	HC	13SEP13		Rev. B
Design Supervisor	EC	21MAR14		
Authorised Representative	AFK	21MAR14		