



806000 E

808000 E

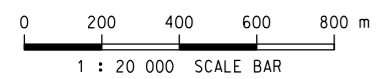
810000 E

- LEGEND:**
- PROPOSED LAND FORMATION FOOTPRINT
  - MODIFICATION OF EXISTING SEAWALL
  - GENERAL LAND FORMATION OUTSIDE CMPs
  - GENERAL LAND FORMATION INSIDE CMPs
  - SEAWALL OUTSIDE CMPs
  - SEAWALL INSIDE CMPs
  - RUNWAY OUTSIDE CMPs
  - RUNWAY INSIDE CMPs
  - ★ TENTATIVE LOCATIONS OF PERMANENT BOAT LANDING POINTS

812000 E

820000 N

818000 N



Copyright in this document and all proprietary rights in the information it contains belong to the AA. It is a condition of the supply of this document, in whatever form, that the recipient shall hold it in confidence and shall not duplicate or otherwise reproduce it in whole or in part, nor disclose its contents without the written consent of the AA.

Rev.	Date	Description	Checked
A	18OCT13	FIRST ISSUE	DC
B	30JAN14	GENERAL REVISION	EY
C	21MAR14	GENERAL REVISION	EY

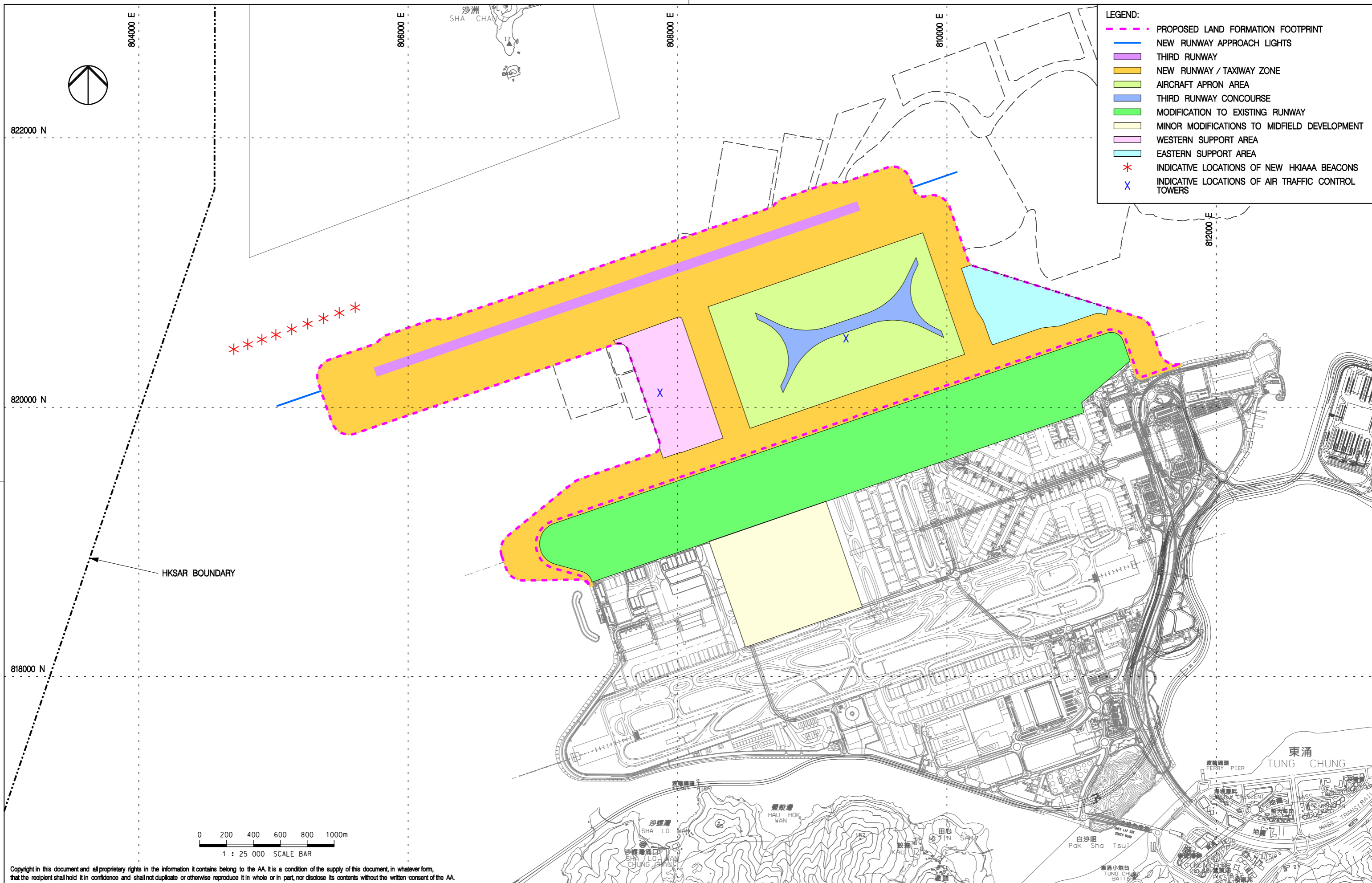


**KEY PROJECT COMPONENTS –  
LAND FORMATION**

Consultant's Signatures for Approval		Date
Design	DC	18OCT13
Checkers	DC	18OCT13
Design Supervisor	EC	21MAR14
Authorised Representative	AFK	21MAR14

EXPANSION OF HONG KONG INTERNATIONAL AIRPORT INTO A THREE-RUNWAY SYSTEM	
Drawing No.	MCL / P132 / EMA / 1-001
Scale at A3	1 : 20000
Rev.	C



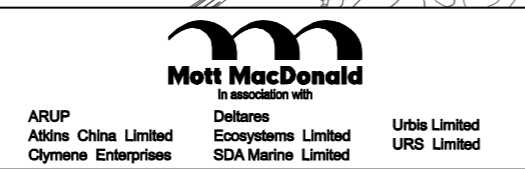


**LEGEND:**

- - - PROPOSED LAND FORMATION FOOTPRINT
- NEW RUNWAY APPROACH LIGHTS
- THIRD RUNWAY
- NEW RUNWAY / TAXIWAY ZONE
- AIRCRAFT APRON AREA
- THIRD RUNWAY CONCOURSE
- MODIFICATION TO EXISTING RUNWAY
- MINOR MODIFICATIONS TO MIDFIELD DEVELOPMENT
- WESTERN SUPPORT AREA
- EASTERN SUPPORT AREA
- \* INDICATIVE LOCATIONS OF NEW HKIAAA BEACONS
- X INDICATIVE LOCATIONS OF AIR TRAFFIC CONTROL TOWERS

Copyright in this document and all proprietary rights in the information it contains belong to the AA. It is a condition of the supply of this document, in whatever form, that the recipient shall hold it in confidence and shall not duplicate or otherwise reproduce it in whole or in part, nor disclose its contents without the written consent of the AA.

Rev.	Date	Description	Checked
A	18OCT13	FIRST ISSUE	DC
B	30JAN14	GENERAL REVISION	EY
C	10APR14	GENERAL REVISION	DC



**KEY PROJECT COMPONENTS – AIRFIELD FACILITIES**

Consultant's Signatures for Approval		Date
Design	DC	18OCT13
Checkers	DC	18OCT13
Design Supervisor	EC	21MAR14
Authorised Representative	AFK	21MAR14

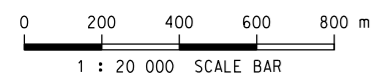
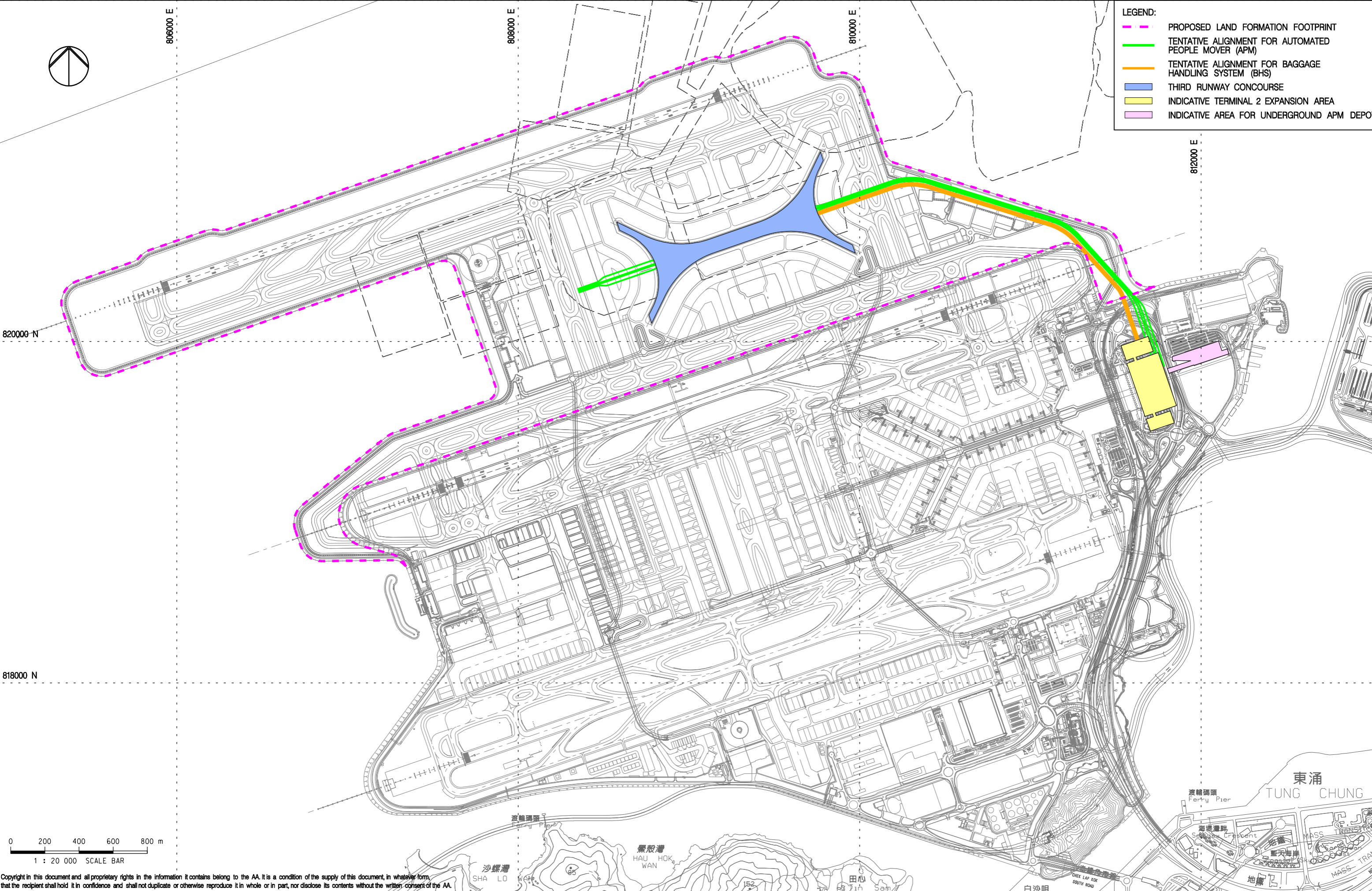
EXPANSION OF HONG KONG INTERNATIONAL AIRPORT INTO A THREE-RUNWAY SYSTEM	
Drawing No.	MCL / P132 / EMA / 1-002
Scale at A3	1 : 25000
Rev.	C





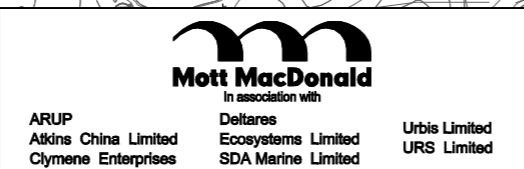
**LEGEND:**

- PROPOSED LAND FORMATION FOOTPRINT
- TENTATIVE ALIGNMENT FOR AUTOMATED PEOPLE MOVER (APM)
- TENTATIVE ALIGNMENT FOR BAGGAGE HANDLING SYSTEM (BHS)
- THIRD RUNWAY CONCOURSE
- INDICATIVE TERMINAL 2 EXPANSION AREA
- INDICATIVE AREA FOR UNDERGROUND APM DEPOT



Copyright in this document and all proprietary rights in the information it contains belong to the AA. It is a condition of the supply of this document, in whatever form, that the recipient shall hold it in confidence and shall not duplicate or otherwise reproduce it in whole or in part, nor disclose its contents without the written consent of the AA.

Rev.	Date	Description	Checked
A	18OCT13	FIRST ISSUE	DC
B	30JAN14	GENERAL REVISION	EY

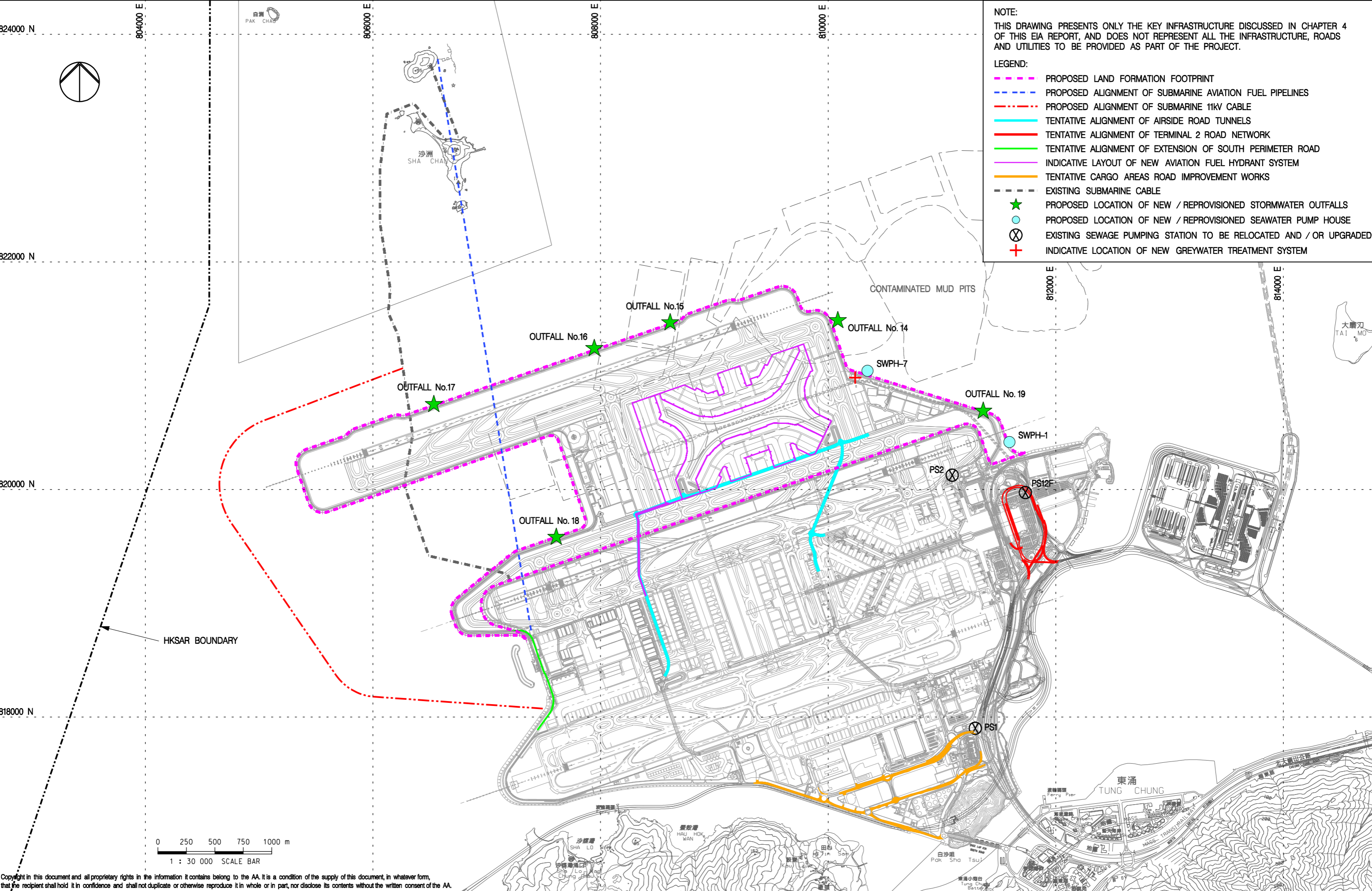


**KEY PROJECT COMPONENTS – PASSENGER FACILITIES**

Consultant's Signatures for Approval		Date
Design	DC	18OCT13
Checkers	DC	18OCT13
Design Supervisor	EC	21MAR14
Authorised Representative	AFK	21MAR14

EXPANSION OF HONG KONG INTERNATIONAL AIRPORT INTO A THREE-RUNWAY SYSTEM	
Drawing No.	MCL / P132 / EMA / 1-003
Scale at A3	1 : 20000
Rev.	B





NOTE:  
THIS DRAWING PRESENTS ONLY THE KEY INFRASTRUCTURE DISCUSSED IN CHAPTER 4 OF THIS EIA REPORT, AND DOES NOT REPRESENT ALL THE INFRASTRUCTURE, ROADS AND UTILITIES TO BE PROVIDED AS PART OF THE PROJECT.

LEGEND:

- PROPOSED LAND FORMATION FOOTPRINT
- PROPOSED ALIGNMENT OF SUBMARINE AVIATION FUEL PIPELINES
- PROPOSED ALIGNMENT OF SUBMARINE 11KV CABLE
- TENTATIVE ALIGNMENT OF AIRSIDE ROAD TUNNELS
- TENTATIVE ALIGNMENT OF TERMINAL 2 ROAD NETWORK
- TENTATIVE ALIGNMENT OF EXTENSION OF SOUTH PERIMETER ROAD
- INDICATIVE LAYOUT OF NEW AVIATION FUEL HYDRANT SYSTEM
- TENTATIVE CARGO AREAS ROAD IMPROVEMENT WORKS
- EXISTING SUBMARINE CABLE
- ★ PROPOSED LOCATION OF NEW / REPROVISIONED STORMWATER OUTFALLS
- PROPOSED LOCATION OF NEW / REPROVISIONED SEAWATER PUMP HOUSE
- ⊗ EXISTING SEWAGE PUMPING STATION TO BE RELOCATED AND / OR UPGRADED
- ⊕ INDICATIVE LOCATION OF NEW GREYWATER TREATMENT SYSTEM

Copyright in this document and all proprietary rights in the information it contains belong to the AA. It is a condition of the supply of this document, in whatever form, that the recipient shall hold it in confidence and shall not duplicate or otherwise reproduce it in whole or in part, nor disclose its contents without the written consent of the AA.

Rev.	Date	Description	Checked
A	18OCT13	FIRST ISSUE	DC
B	30JAN14	GENERAL REVISION	EY



Title  
**KEY PROJECT COMPONENTS – ROAD NETWORK AND KEY INFRASTRUCTURE**

Consultant's Signatures for Approval		Date
Design	DC	18OCT13
Checkers	DC	18OCT13
Design Supervisor	EC	21MAR14
Authorised Representative	AFK	21MAR14

EXPANSION OF HONG KONG INTERNATIONAL AIRPORT INTO A THREE-RUNWAY SYSTEM	
Drawing No.	MCL / P132 / EMA / 1-004
Scale at A3	1 : 30000
Rev.	B