



806000 E

808000 E

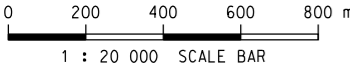
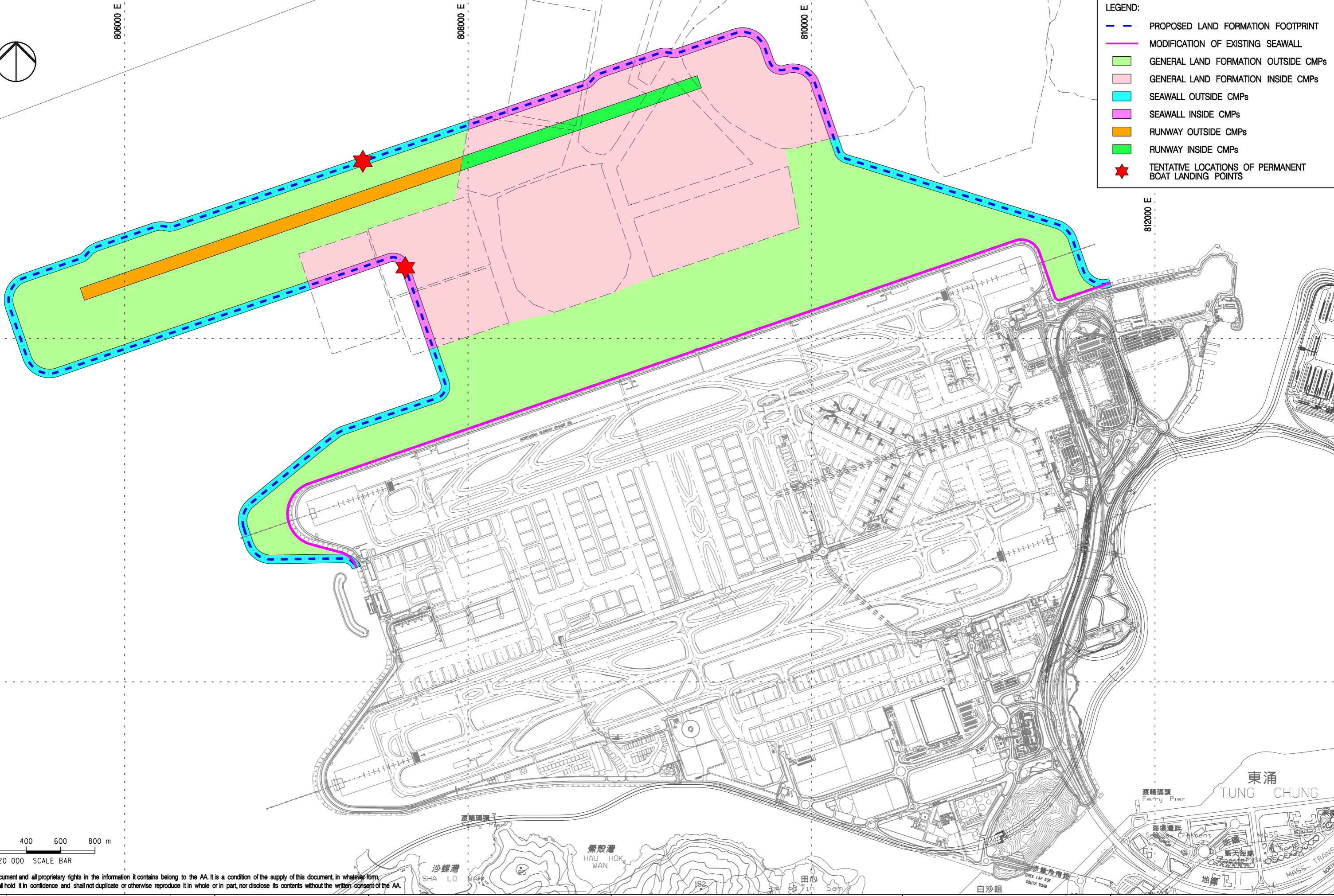
810000 E

812000 E

820000 N

818000 N

- LEGEND:**
- PROPOSED LAND FORMATION FOOTPRINT
  - MODIFICATION OF EXISTING SEAWALL
  - GENERAL LAND FORMATION OUTSIDE CMPs
  - GENERAL LAND FORMATION INSIDE CMPs
  - SEAWALL OUTSIDE CMPs
  - SEAWALL INSIDE CMPs
  - RUNWAY OUTSIDE CMPs
  - RUNWAY INSIDE CMPs
  - ★ TENTATIVE LOCATIONS OF PERMANENT BOAT LANDING POINTS



Copyright in this document and all proprietary rights in the information it contains belong to the AA. It is a condition of the supply of this document, in whatever form, that the recipient shall hold it in confidence and shall not duplicate or otherwise reproduce it in whole or in part, nor disclose its contents without the written consent of the AA.

Rev.	Date	Description	Checked
A	18OCT13	FIRST ISSUE	DC
B	30JAN14	GENERAL REVISION	EY
C	21MAR14	GENERAL REVISION	EY



**KEY PROJECT COMPONENTS – LAND FORMATION**

Consultant's Signatures for Approval		Date
Design	DC	18OCT13
Checkers	DC	18OCT13
Design Supervisor	EC	21MAR14
Authorised Representative	AFK	21MAR14

EXPANSION OF HONG KONG INTERNATIONAL AIRPORT INTO A THREE-RUNWAY SYSTEM	
Drawing No.	MCL / P132 / EMA / 1-001
Scale at A3	1 : 20000
Rev.	C