



806000 E

808000 E

810000 E

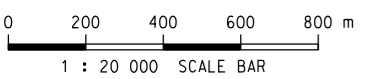
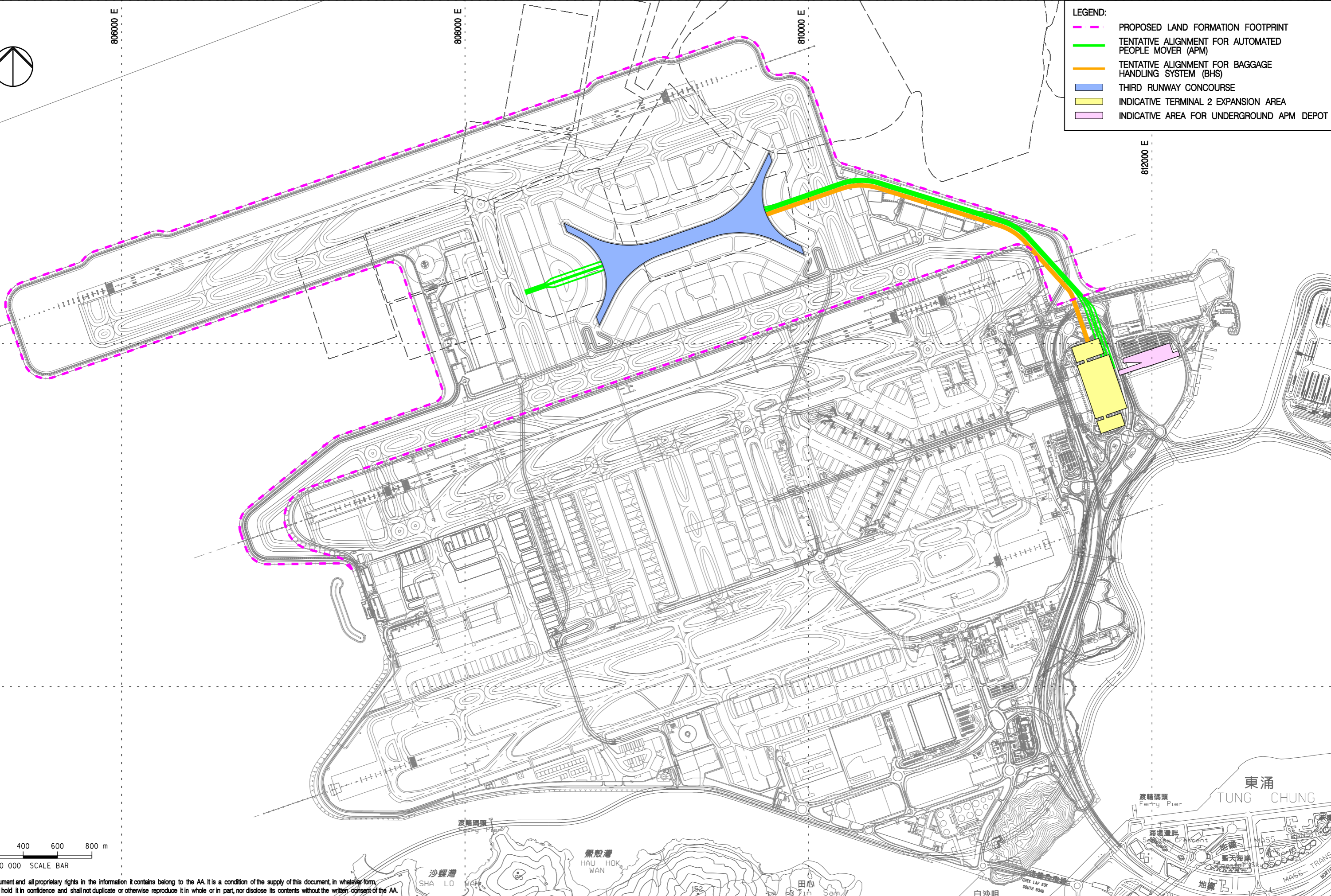
812000 E

820000 N

818000 N

**LEGEND:**

- PROPOSED LAND FORMATION FOOTPRINT
- TENTATIVE ALIGNMENT FOR AUTOMATED PEOPLE MOVER (APM)
- TENTATIVE ALIGNMENT FOR BAGGAGE HANDLING SYSTEM (BHS)
- THIRD RUNWAY CONCOURSE
- INDICATIVE TERMINAL 2 EXPANSION AREA
- INDICATIVE AREA FOR UNDERGROUND APM DEPOT



Copyright in this document and all proprietary rights in the information it contains belong to the AA. It is a condition of the supply of this document, in whatever form, that the recipient shall hold it in confidence and shall not duplicate or otherwise reproduce it in whole or in part, nor disclose its contents without the written consent of the AA.

Rev.	Date	Description	Checked
A	18OCT13	FIRST ISSUE	DC
B	30JAN14	GENERAL REVISION	EY



Title  
**KEY PROJECT COMPONENTS – PASSENGER FACILITIES**

Consultant's Signatures for Approval		Date
Design	DC	18OCT13
Checkers	DC	18OCT13
Design Supervisor	EC	21MAR14
Authorised Representative	AFK	21MAR14

EXPANSION OF HONG KONG INTERNATIONAL AIRPORT INTO A THREE-RUNWAY SYSTEM		Scale at A3
Drawing No.	MCL / P132 / EMA / 1-003	1 : 20000
Rev.	B	