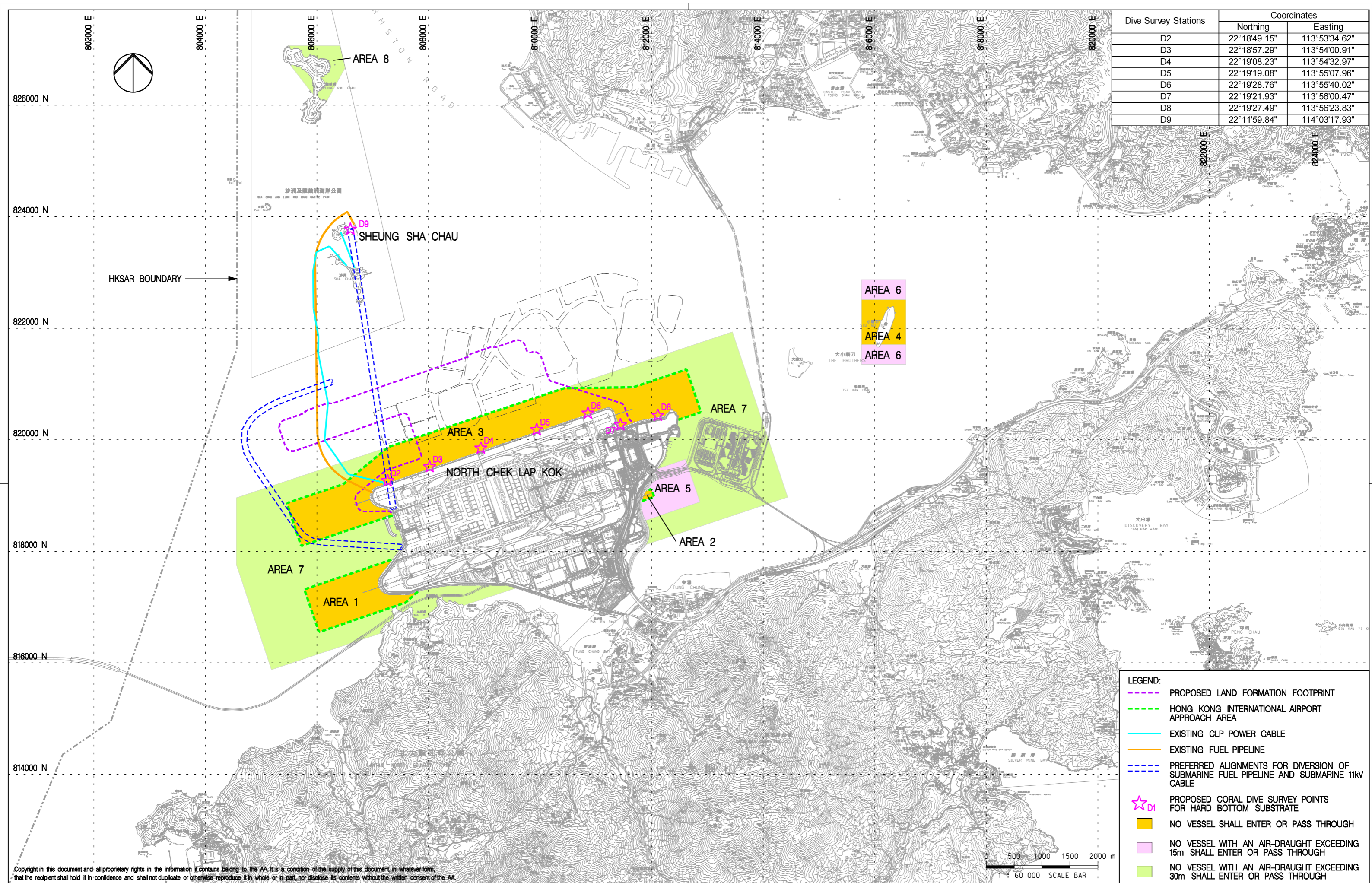


Dive Survey Stations	Coordinates	
	Northing	Easting
D2	22° 18'49.15"	113° 53'34.62"
D3	22° 18'57.29"	113° 54'00.91"
D4	22° 19'08.23"	113° 54'32.97"
D5	22° 19'19.08"	113° 55'07.96"
D6	22° 19'28.76"	113° 55'40.02"
D7	22° 19'21.93"	113° 56'00.47"
D8	22° 19'27.49"	113° 56'23.83"
D9	22° 11'59.84"	114° 03'17.93"

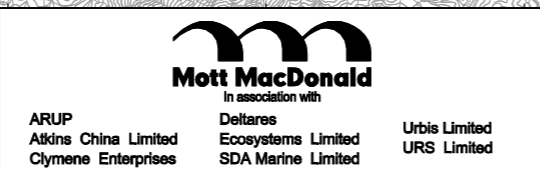


**LEGEND:**

- PROPOSED LAND FORMATION FOOTPRINT
- HONG KONG INTERNATIONAL AIRPORT APPROACH AREA
- EXISTING CLP POWER CABLE
- EXISTING FUEL PIPELINE
- PREFERRED ALIGNMENTS FOR DIVERSION OF SUBMARINE FUEL PIPELINE AND SUBMARINE 11KV CABLE
- ☆ D1 PROPOSED CORAL DIVE SURVEY POINTS FOR HARD BOTTOM SUBSTRATE
- NO VESSEL SHALL ENTER OR PASS THROUGH
- NO VESSEL WITH AN AIR-DRAUGHT EXCEEDING 15m SHALL ENTER OR PASS THROUGH
- NO VESSEL WITH AN AIR-DRAUGHT EXCEEDING 30m SHALL ENTER OR PASS THROUGH

Copyright in this document and all proprietary rights in the information it contains belong to the AA. It is a condition of the supply of this document, in whatever form, that the recipient shall hold it in confidence and shall not duplicate or otherwise reproduce it in whole or in part, nor disclose its contents without the written consent of the AA.

Rev.	Date	Description	Checked
A	21FEB14	FIRST ISSUE	JC



Title  
**PRECONSTRUCTION PHASE  
CORAL DIVE SURVEY LOCATIONS**

Consultant's Signatures for Approval		Date
Design	GC	21FEB14
Checkers	GC	21FEB14
Design Supervisor	EC	21MAR14
Authorised Representative	AFK	21MAR14

EXPANSION OF HONG KONG INTERNATIONAL AIRPORT INTO A THREE-RUNWAY SYSTEM	
Drawing No.	MCL / P132 / EMA / 10-001
Scale at A3	1 : 60000
Rev.	A