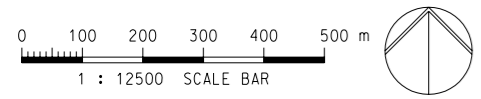


- POTENTIAL MITIGATION MEASURES
CONSTRUCTION PHASE:
- CM1 (L+V) - WORKS AREA MINIMISED
 - CM2 (V) - CONSTRUCTION PERIOD REDUCED TO PRACTICAL MINIMUM
 - CM3 (V) - PHASING OF THE CONSTRUCTION STAGE
 - CM4 (V) - CONSTRUCTION TRAFFIC (LAND AND SEA) REDUCED TO PRACTICAL MINIMUM
 - CM5 (V) - ERECTION OF DECORATIVE MESH SCREENS OR CONSTRUCTION HOARDINGS
 - CM6 (V) - AVOIDANCE OF EXCESSIVE HEIGHT AND BULK OF SITE BUILDINGS AND STRUCTURES
 - CM7 (V) - CONTROL OF NIGHT-TIME LIGHTING
 - CM8 (L) - PROTECT EXISTING TREES
 - CM9 (L) - TREES AFFECTED BY THE WORKS SHALL BE TRANSPLANTED
 - CM10 (L+V) - ADVANCED HYDROSEEDING AROUND TAXIWAYS AND RUNWAYS

- POTENTIAL MITIGATION MEASURES
OPERATIONAL PHASE:
- OM1 (V) - SENSITIVE LANDSCAPE DESIGN OF RECLAMATION EDGE
 - OM2 (V) - ALL ABOVE GROUND STRUCTURES SHALL BE SENSITIVELY DESIGNED
 - OM3 (V) - SENSITIVE DESIGN OF BUILDINGS AND STRUCTURES IN TERMS OF SCALE, HEIGHT AND BULK (VISUAL WEIGHT)
 - OM4 (V) - USE APPROPRIATE BUILDING MATERIALS AND COLOURS IN BUILT STRUCTURES
 - OM5 (V) - LIGHTING UNITS TO BE DIRECTIONAL AND MINIMISE UNNECESSARY LIGHT SPILL AND GLARE
 - OM6 (L+V) - GREENING MEASURES IMPLEMENTED
 - OM7 (L+V) - COMPENSATORY TREE PLANTING FOR ALL FELLED TREES
 - OM8 (L+V) - STREETSCAPE SHALL BE SENSITIVELY DESIGNED
 - OM9 (L+V) - ALL STREETSCAPE AREAS AND HARD AND SOFT LANDSCAPE AREAS DISTURBED DURING CONSTRUCTION SHALL BE REINSTATED
 - OM10 (V) - AESTHETIC IMPROVEMENT PLANTING OF VIADUCT STRUCTURE THROUGH GREENING OF STRUCTURE WHERE FEASIBLE
 - OM11 (V) - SENSITIVE DESIGN OF FOOTBRIDGES, NOISE BARRIERS AND ENCLOSURES WITH GREENING (SCREEN PLANTING/CLIMBERS/PLANTERS) AND CHROMATIC MEASURES

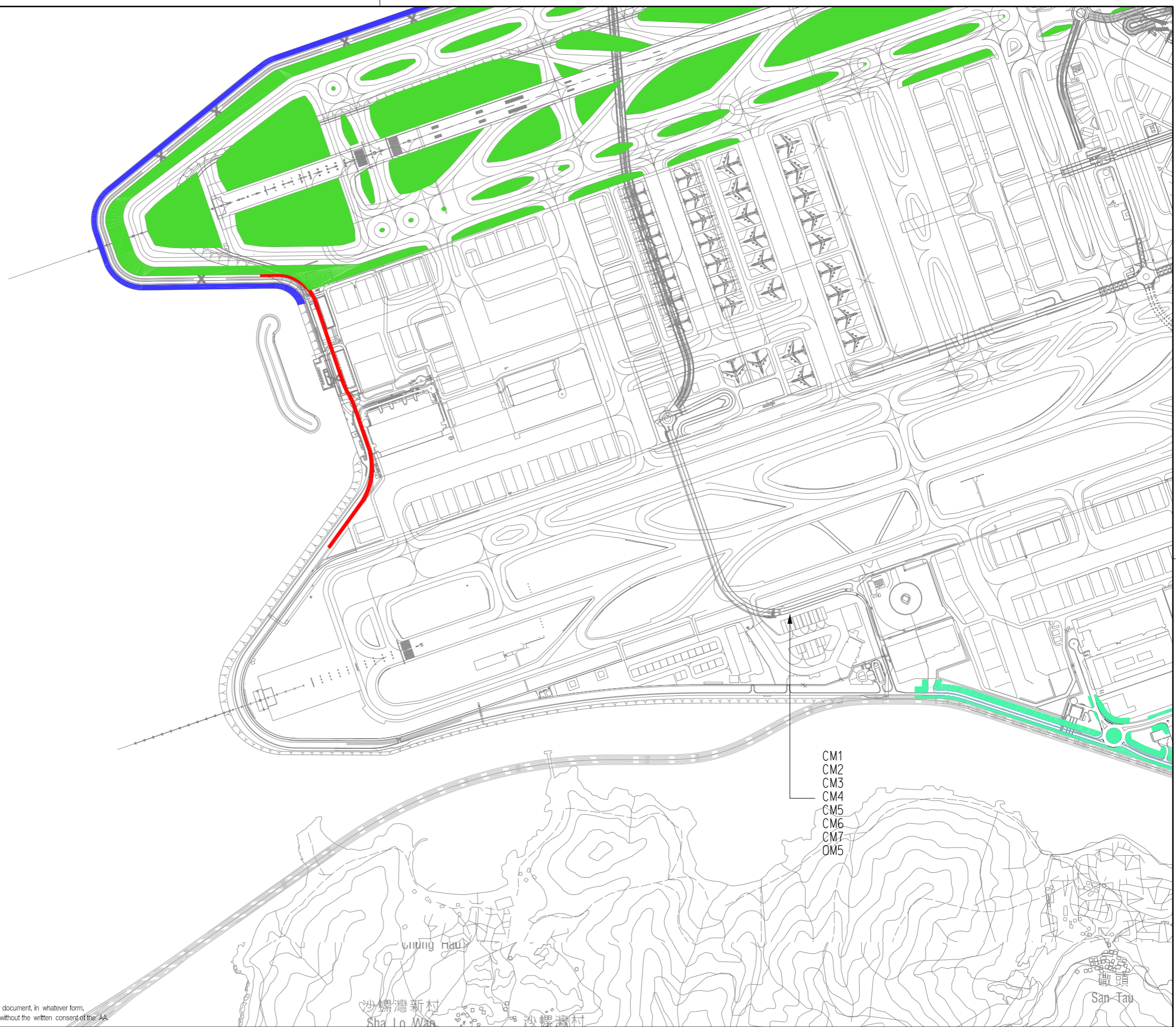
LEGEND:

- CM10, OM6
- OM2, OM3, OM4, OM6
- OM6, OM8, OM9
- OM6, OM10
- OM1, OM6



NOTE:
COLOURED MITIGATION MEASURES ARE LOCATION SPECIFIC
NON-COLOURED MITIGATION MEASURES CAN BE APPLIED THROUGHOUT THE PROJECT SITE BOUNDARY
L = LANDSCAPE MITIGATION MEASURE
V = VISUAL MITIGATION MEASURE

Copyright in this document and all proprietary rights in the information it contains belong to the AA. It is a condition of the supply of this document, in whatever form, that the recipient shall hold it in confidence and shall not duplicate or otherwise reproduce it in whole or in part, nor disclose its contents without the written consent of the AA.



- CM1
- CM2
- CM3
- CM4
- CM5
- CM6
- CM7
- OM5

Rev.	Date	Description	Checked
-	21JAN14	FIRST ISSUE	AD
A	11FEB14	GENERAL REVISION	AD
B	17MAR14	GENERAL REVISION	AD
C	24MAR14	GENERAL REVISION	AD



Mott MacDonald
In association with

ARUP
Atkins China Limited
Clymene Enterprises

Deltares
Ecosystems Limited
SDA Marine Limited

Urbis Limited
URS Limited

Title
LANDSCAPE AND VISUAL MITIGATION ARRANGEMENT BLOW-UP PLAN - CHEK LAP KOK

Consultant's Signatures for Approval		Date
Design	PL	24MAR14
Checkers	TL	24MAR14
Design Supervisor		
Authorised Representative	AD	24MAR14

EXPANSION OF HONG KONG INTERNATIONAL AIRPORT INTO A THREE-RUNWAY SYSTEM	
Drawing No.	MCL / P132 / EMA / 12-001.5
Scale at A3	12500
Rev.	C