

SPECIES OF CONSERVATION IMPORTANCE:

Horseshoe Crab

H1: *Carcinoscorpius rotundicauda*

Coral

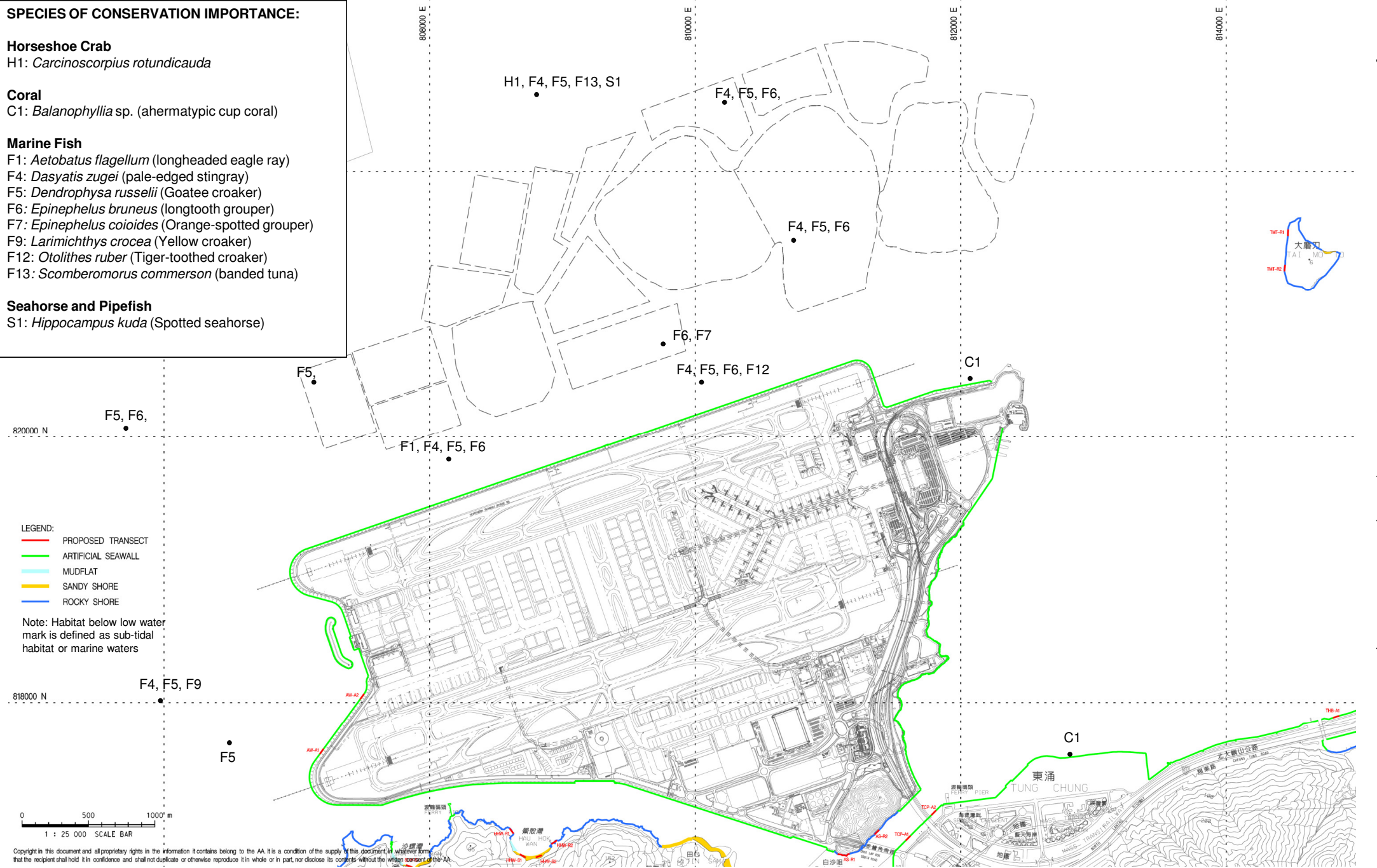
C1: *Balanophyllia* sp. (ahermatypic cup coral)

Marine Fish

- F1: *Aetobatus flagellum* (longheaded eagle ray)
- F4: *Dasyatis zugei* (pale-edged stingray)
- F5: *Dendrophysa russellii* (Goatee croaker)
- F6: *Epinephelus bruneus* (longtooth grouper)
- F7: *Epinephelus coioides* (Orange-spotted grouper)
- F9: *Larimichthys crocea* (Yellow croaker)
- F12: *Otolithes ruber* (Tiger-toothed croaker)
- F13: *Scomberomorus commerson* (banded tuna)

Seahorse and Pipefish

S1: *Hippocampus kuda* (Spotted seahorse)



Copyright in this document and all proprietary rights in the information it contains belong to the AA. It is a condition of the supply of this document in whatever form that the recipient shall hold it in confidence and shall not duplicate or otherwise reproduce it in whole or in part, nor disclose its contents without the written consent of the AA.

Rev.	Date	Description	Checked
A	16SEP13	FIRST ISSUE	GC
B	10JAN14	GENERAL REVISION	JC



Mott MacDonald
In association with

ARUP
Aikwa China Limited
Clymene Enterprises

Deltaros
EcoSystems Limited
SDA Marine Limited

Urbis Limited
URS Scott Wilson Limited

Title
INTERTIDAL HABITAT AND SURVEY TRANSECT WITH SPECIES OF CONSERVATION IMPORTANCE RECORDED- AIRPORT ISLAND

Consultant's Signatures for Approval		Date
Design	GC	10JAN14
Checkers	JC	10JAN14
Design Supervisor	EC	21MAR14
Authorised Representative	AFK	21MAR14

EXPANSION OF HONG KONG INTERNATIONAL AIRPORT INTO A THREE-RUNWAY SYSTEM

Drawing No. **MCL/P132/EIA/13-014**

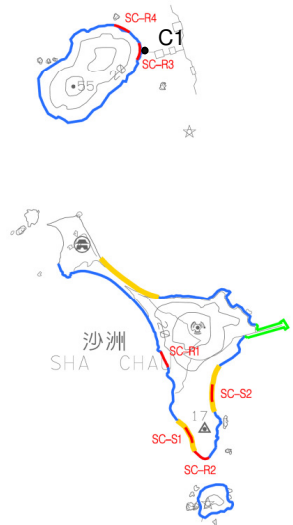
Scale at A3 **1:25000**

Rev. **B**



沙洲及龍鼓洲海岸公園
SHA CHAU AND LUNG KWU CHAU MARINE PARK

白洲
PAK CHAS



F5, F12

F5, F12

F6

H1, F4, F5, F13

LEGEND:
 PROPOSED TRANSECT
 ARTIFICIAL SEAWALL
 SANDY SHORE
 ROCKY SHORE

Note: Habitat below low water mark is defined as sub-tidal habitat or marine waters

SPECIES OF CONSERVATION IMPORTANCE:

- Coral**
 C1: *Balanophyllia* sp. (ahermatypic cup coral)
 C2: *Paracyathus rotundatus* (ahermatypic cup coral)
- Marine Fish**
 F4: *Dasyatis zugei* (pale-edged stingray)
 F5: *Dendrophysa russelii* (Goatee croaker)
 F6: *Epinephelus bruneus* (longtooth grouper)
 F12: *Otolithes ruber* (Tiger-toothed croaker)
 F13: *Scomberomorus commerson* (banded tuna)
- Benthic species**
 B1: *Branchiostoma belcheri* (Amphioxus)
- Horseshoe Crab**
 H1: *Carcinoscorpius rotundicauda*



Copyright in this document and all proprietary rights in the information it contains belong to the AA. It is a condition of the supply of this document, in whatever form, that the recipient shall hold it in confidence and shall not duplicate or otherwise reproduce it in whole or in part, nor disclose its contents without the written consent of the AA.

Rev.	Date	Description	Checked
A	16SEP13	FIRST ISSUE	GC
B	10JAN14	GENERAL REVISION	JC



Title
 INTERTIDAL HABITAT AND SURVEY TRANSECT WITH SPECIES OF CONSERVATION IMPORTANCE RECORDED - SHA CHAU

Consultant's Signatures for Approval		Date
Design	GC	10JAN14
Checkers	JC	10JAN14
Design Supervisor	EC	21MAR14
Authorised Representative	AFK	21MAR14

EXPANSION OF HONG KONG INTERNATIONAL AIRPORT INTO A THREE-RUNWAY SYSTEM	
Drawing No.	MCL/P132/EIA/13-015
Scale at A3	1 : 15000
Rev.	B

SPECIES OF CONSERVATION IMPORTANCE:

Coral

C1: *Balanophyllia* sp. (ahermatypic cup coral)

Marine Fish

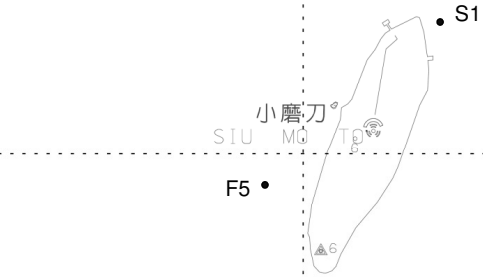
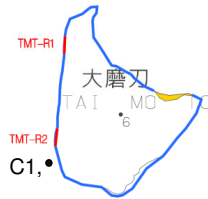
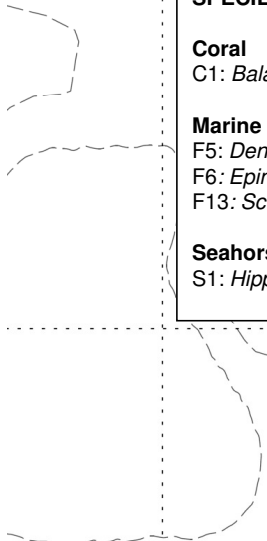
F5: *Dendrophysa russelii* (Goatee croaker)

F6: *Epinephelus bruneus* (longtooth grouper)

F13: *Scomberomorus commerson* (banded tuna)

Seahorse and Pipefish

S1: *Hippocampus kuda* (Spotted seahorse)



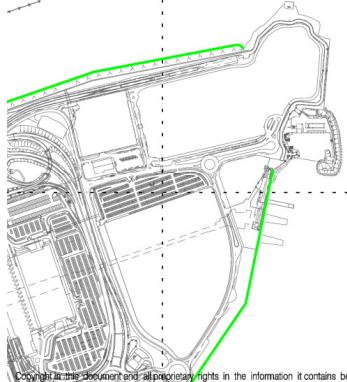
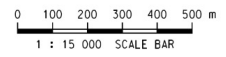
大小磨刀
THE BROTHERS

F5, F6, F13

匙羹洲
TSZ KAN CHAU

- LEGEND:
- PROPOSED TRANSECT
 - ARTIFICIAL SEAWALL
 - SANDY SHORE
 - ROCKY SHORE

Note: Habitat below low water mark is defined as sub-tidal habitat or marine waters



Copyright in this document and all proprietary rights in the information it contains belong to the AA. It is a condition of the supply of this document, in whatever form, that the recipient shall hold it in confidence and shall not duplicate or otherwise reproduce it in whole or in part, nor disclose its contents without the written consent of the AA.

Rev.	Date	Description	Checked
A	16SEP13	FIRST ISSUE	GC
B	10JAN14	GENERAL REVISION	JC



In association with

ARUP
Atkins China Limited
Clymene Enterprises

Deltaros
EcoSystems Limited
SDA Marine Limited

Urbis Limited
URS Scott Wilson Limited

Title
INTERTIDAL HABITAT AND SURVEY TRANSECT WITH SPECIES OF CONSERVATION IMPORTANCE RECORDED – TAI MO TO

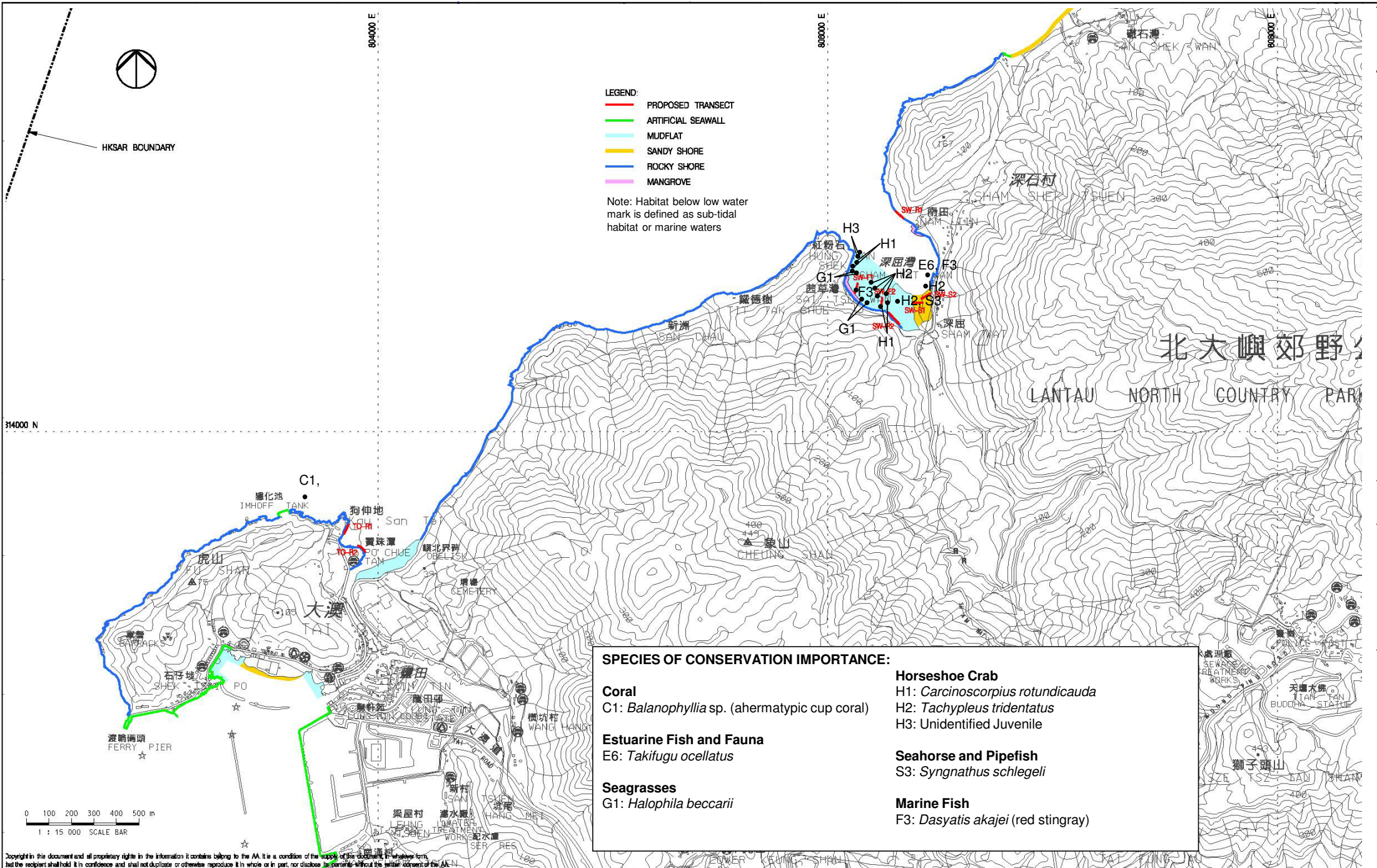
Consultant's Signatures for Approval		Date
Design	GC	10JAN14
Checkers	JC	10JAN14
Design Supervisor	EC	21MAR14
Authorised Representative	AFK	21MAR14

EXPANSION OF HONG KONG INTERNATIONAL AIRPORT INTO A THREE-RUNWAY SYSTEM

Drawing No. **MCL/P132/EIA/13-016**

Scale at A3 **1:15000**

Rev. **B**



- LEGEND:**
- PROPOSED TRANSECT
 - ARTIFICIAL SEAWALL
 - MUDFLAT
 - SANDY SHORE
 - ROCKY SHORE
 - MANGROVE

Note: Habitat below low water mark is defined as sub-tidal habitat or marine waters

SPECIES OF CONSERVATION IMPORTANCE:

Coral

C1: *Balanophyllia* sp. (ahermatypic cup coral)

Estuarine Fish and Fauna

E6: *Takifugu ocellatus*

Seagrasses

G1: *Halophila beccarii*

Horseshoe Crab

H1: *Carcinoscorpius rotundicauda*

H2: *Tachypleus tridentatus*

H3: Unidentified Juvenile

Seahorse and Pipefish

S3: *Syngnathus schlegelii*

Marine Fish

F3: *Dasyatis akajei* (red stingray)

Copyright in this document and all proprietary rights in the information it contains belong to the AA. It is a condition of the supply of this document, in whatever form, that the recipient shall hold it in confidence and shall not duplicate or otherwise reproduce it in whole or in part, nor disclose its contents without the written consent of the AA.

Rev.	Date	Description	Checked
A	16SEP13	FIRST ISSUE	GC
B	10JAN14	GENERAL REVISION	JC



Mott MacDonald
In association with

ARUP
Atkins China Limited
Clymene Enterprises

Dollarus
Ecosystems Limited
SDA Marine Limited

Urbis Limited
URS Scott Wilson Limited

Title
INTERTIDAL HABITAT AND SURVEY TRANSECT WITH SPECIES OF CONSERVATION IMPORTANCE RECORDED – TAI O AND SHAM WAT

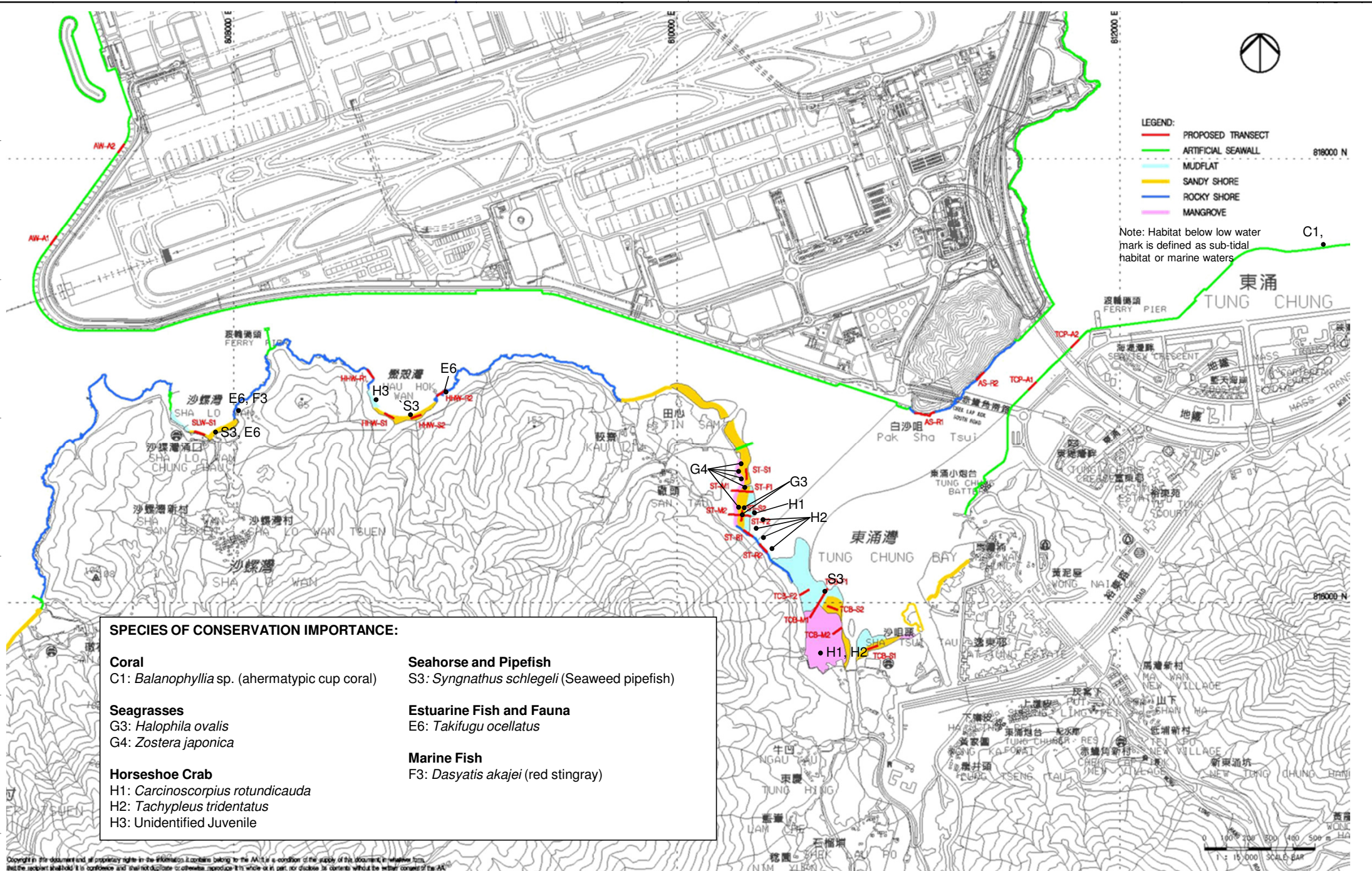
Consultant's Signatures for Approval		Date
Design	GC	10JAN14
Checkers	JC	10JAN14
Design Supervisor	EC	21MAR14
Authorised Representative	AFK	21MAR14

EXPANSION OF HONG KONG INTERNATIONAL AIRPORT INTO A THREE-RUNWAY SYSTEM

Drawing No. **MCL/P132/EIA/13-017**

Scale at A3 **1:15000**

Rev. **B**



- LEGEND:**
- PROPOSED TRANSECT
 - ARTIFICIAL SEAWALL
 - MUDFLAT
 - SANDY SHORE
 - ROCKY SHORE
 - MANGROVE

Note: Habitat below low water mark is defined as sub-tidal habitat or marine waters

SPECIES OF CONSERVATION IMPORTANCE:

Coral

C1: *Balanophyllia* sp. (ahermatypic cup coral)

Seagrasses

G3: *Halophila ovalis*
G4: *Zostera japonica*

Horseshoe Crab

H1: *Carcinoscorpius rotundicauda*
H2: *Tachypleus tridentatus*
H3: Unidentified Juvenile

Seahorse and Pipefish

S3: *Syngnathus schlegelii* (Seaweed pipefish)

Estuarine Fish and Fauna

E6: *Takitugu ocellatus*

Marine Fish

F3: *Dasyatis akajei* (red stingray)

Copyright in this document and all proprietary rights in the information it contains belong to the MCL. It is a condition of the supply of this document, in whatever form, that the recipient shall hold it in confidence and shall not disclose its contents, reproduce it in whole or in part, nor disclose its contents without the written consent of the MCL.

Rev.	Date	Description	Checked
A	16SEP13	FIRST ISSUE	GC
B	10JAN14	GENERAL REVISION	JC



Title
INTERTIDAL HABITAT AND SURVEY TRANSECT WITH SPECIES OF CONSERVATION IMPORTANCE RECORDED – SHA LO WAN, HAU HOK WAN, SAN TAU, TUNG CHUNG BAY AND TUNG CHUNG PIER

Consultant's Signatures for Approval		Date
Design	GC	10JAN14
Checkers	JC	10JAN14
Design Supervisor	EC	21MAR14
Authorised Representative	AFK	21MAR14

EXPANSION OF HONG KONG INTERNATIONAL AIRPORT INTO A THREE-RUNWAY SYSTEM		Scale at A3
Drawing No.		1:15000
MCL/P132/EIA/13-018		Rev. B

822000 N

818000 E

820000 E

822000 E

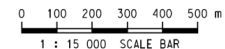
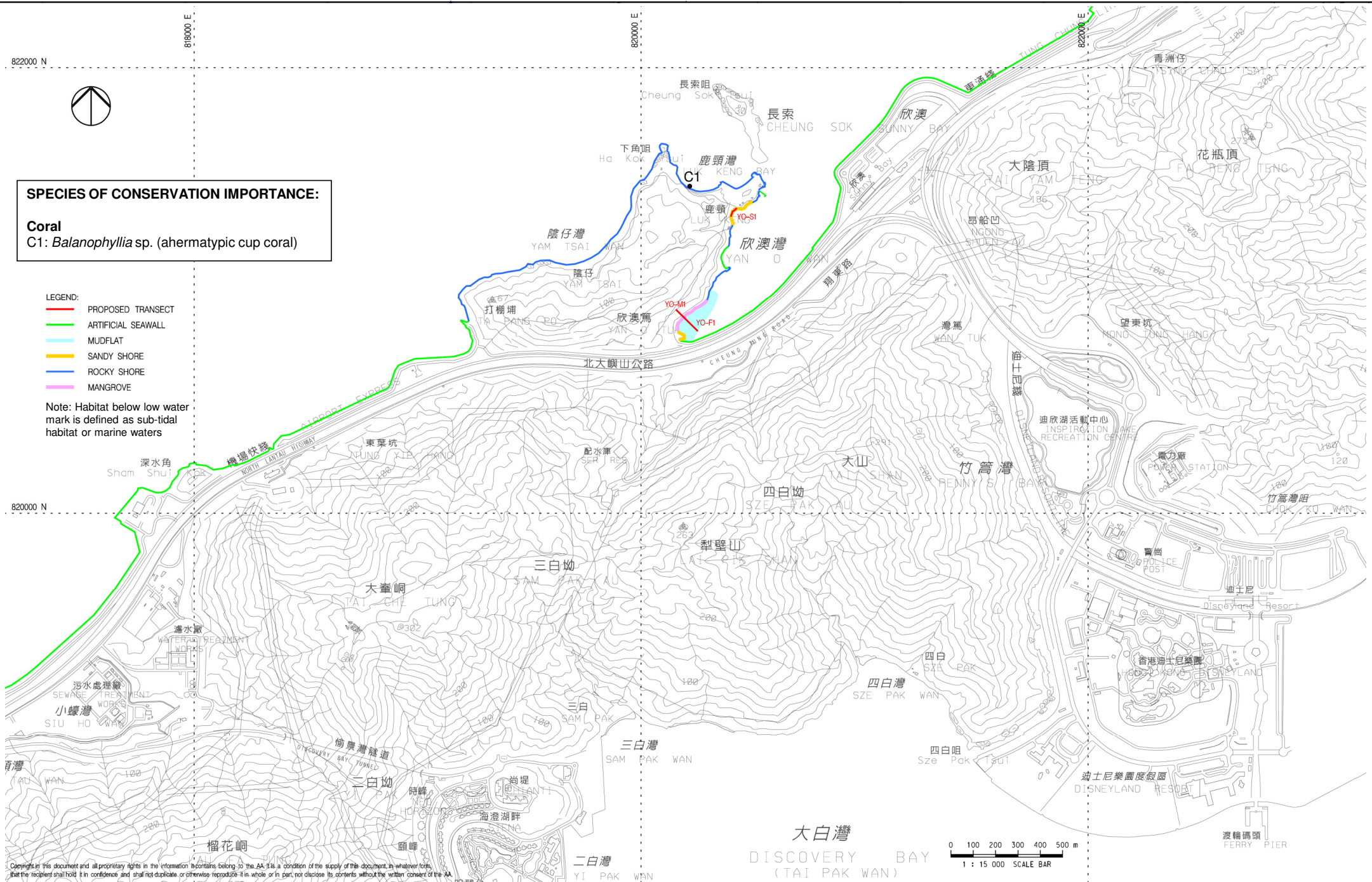


SPECIES OF CONSERVATION IMPORTANCE:

Coral
C1: *Balanophyllia* sp. (ahermatypic cup coral)

- LEGEND:
- PROPOSED TRANSECT
 - ARTIFICIAL SEAWALL
 - MUDFLAT
 - SANDY SHORE
 - ROCKY SHORE
 - MANGROVE

Note: Habitat below low water mark is defined as sub-tidal habitat or marine tidal



Copyright in this document and all proprietary rights in the information it contains belong to the AA. It is a condition of the supply of this document, in whatever form, that the recipient shall hold it in confidence and shall not duplicate or otherwise reproduce it in whole or in part, nor disclose its contents without the written consent of the AA.

Rev.	Date	Description	Checked
A	16SEP13	FIRST ISSUE	GC
B	10JAN14	GENERAL REVISION	JC



Mott MacDonald
In association with

ARUP
Atkins China Limited
Clymene Enterprises

Dollarus
Ecosystems Limited
SDA Marine Limited

Urbis Limited
URS Scott Wilson Limited

Title
INTERTIDAL HABITAT AND SURVEY TRANSECT WITH SPECIES OF CONSERVATION IMPORTANCE RECORDED - YAN O

Consultant's Signatures for Approval		Date
Design	GC	10JAN14
Checkers	JC	10JAN14
Design Supervisor	EC	21MAR14
Authorised Representative	AFK	21MAR14

EXPANSION OF HONG KONG INTERNATIONAL AIRPORT INTO A THREE-RUNWAY SYSTEM		Scale at A3
Drawing No.		1 : 15000
MCL/P132/EIA/13-020		Rev. B