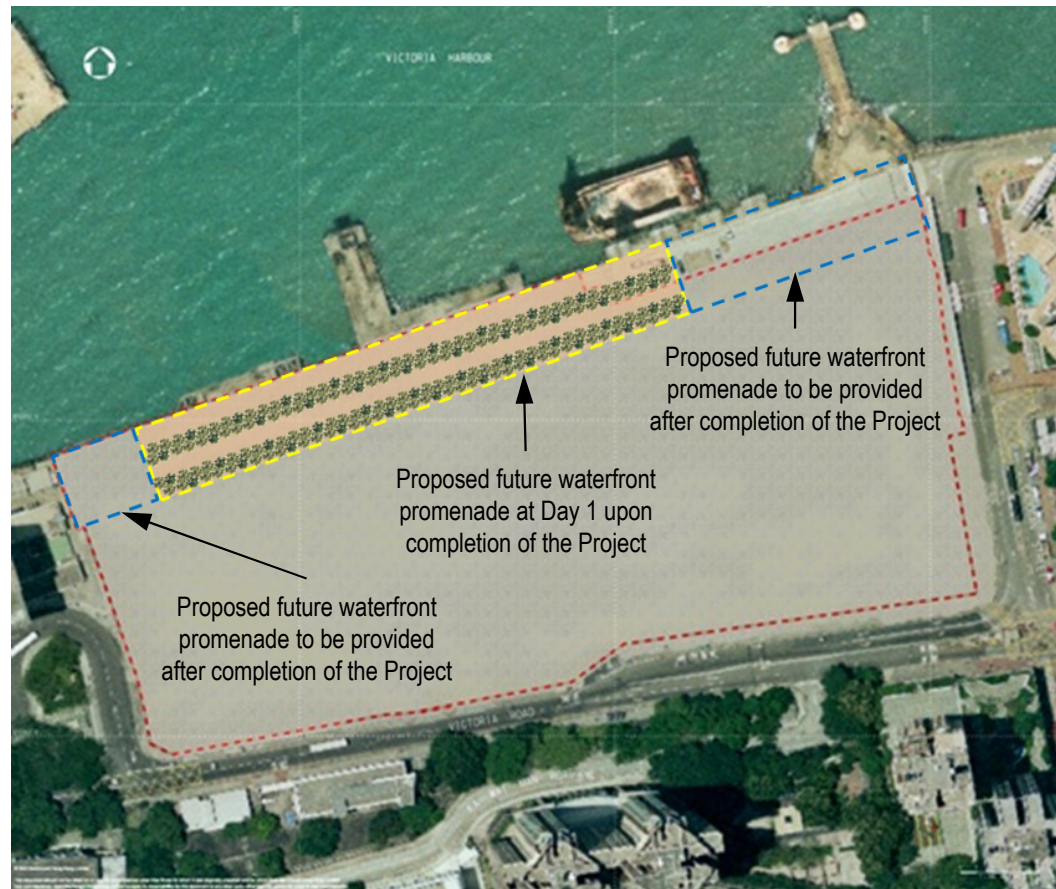




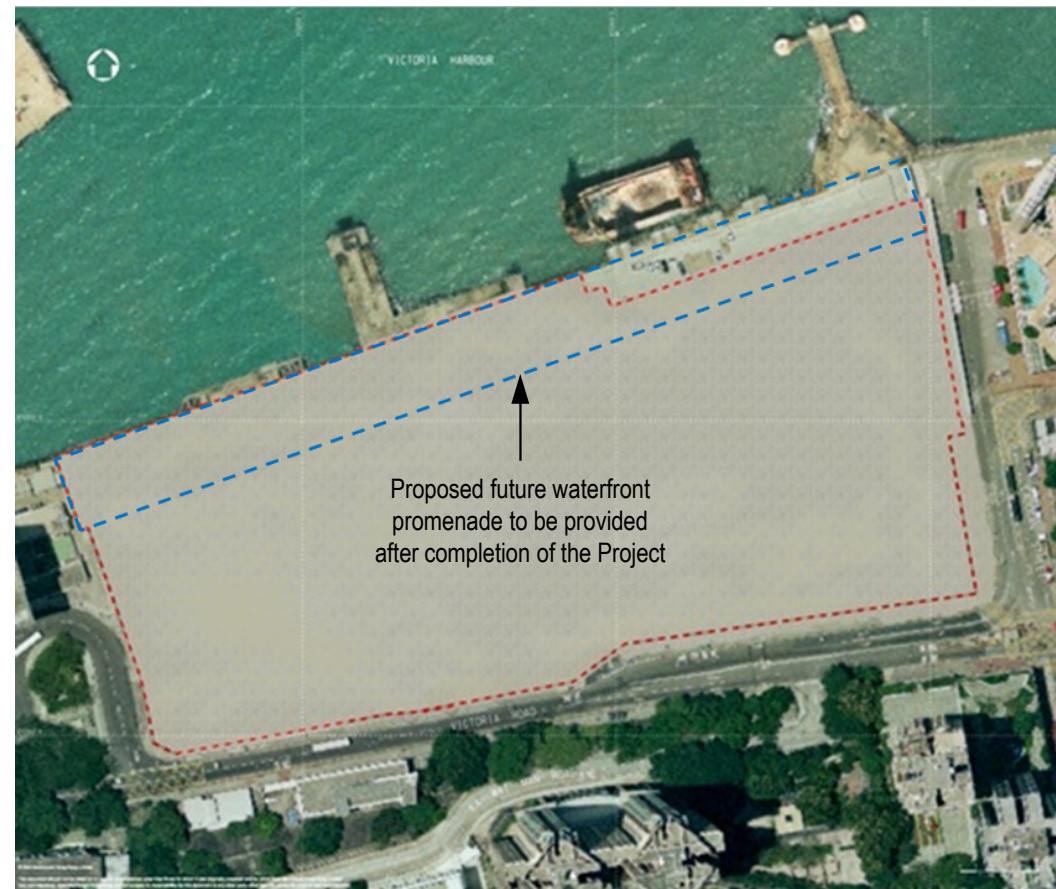
Existing View of the Landscape Assessment Area



Landscape Assessment Area at Day 1 upon Completion of the Project without Mitigation Measures



Landscape Assessment Area at Day 1 upon Completion of the Project with Mitigation Measures under Reprovisioning Option A



Landscape Assessment Area at Day 1 upon Completion of the Project with Mitigation Measures under Reprovisioning Options B and C

- Notes
1. The location of the proposed future waterfront promenade as shown in the photomontages is only indicative and is subject to review.
 2. The landscape treatment as shown in the photomontages only serves the purpose of illustrating possible effect of proposed landscape mitigation measures and is subject to review.
 3. The location and landscape design of the proposed future waterfront promenade are subject to review and will be included in the landscape plan to be submitted to Environmental Protection Department.

Key to symbols

- 🌳 New tree to be planted in the proposed future waterfront promenade

Reference drawings

| Rev | Date | Drawn | Description | Ch'k'd | App'd |
|-----|--------|-------|----------------|--------|-------|
| P2 | DEC 14 | PK | FOR SUBMISSION | EC | AFK |
| P1 | APR 13 | PK | FOR SUBMISSION | CC | AFK |



| | | | | | |
|---|----|--------|--------------|-----|----|
|  <p>20/F Two Landmark East 100 How Ming Street Kowloon, Kowloon Hong Kong T +852 2828 5757 F +852 2827 1823 W www.mottmac.com.hk</p> | | | | | |
| <p>Client</p>  <p>CIVIL ENGINEERING AND DEVELOPMENT DEPARTMENT</p> | | | | | |
| <p>Project</p> <p>ALTERNATIVE GROUND DECONTAMINATION WORKS AT THE PROPOSED KENNEDY TOWN COMPREHENSIVE DEVELOPMENT AREA SITE</p> | | | | | |
| <p>Title</p> <p>PHOTOMONTAGES OF LANDSCAPE ASSESSMENT AREA</p> | | | | | |
| Designed | PK | | Eng check | MCD | |
| Drawn | PK | | Coordination | SMF | |
| Dwg check | EC | | Approved | AFK | |
| Scale at A1 | | Status | PRE | Rev | P2 |
| Drawing Number | | | | | |

FIGURE 10.9