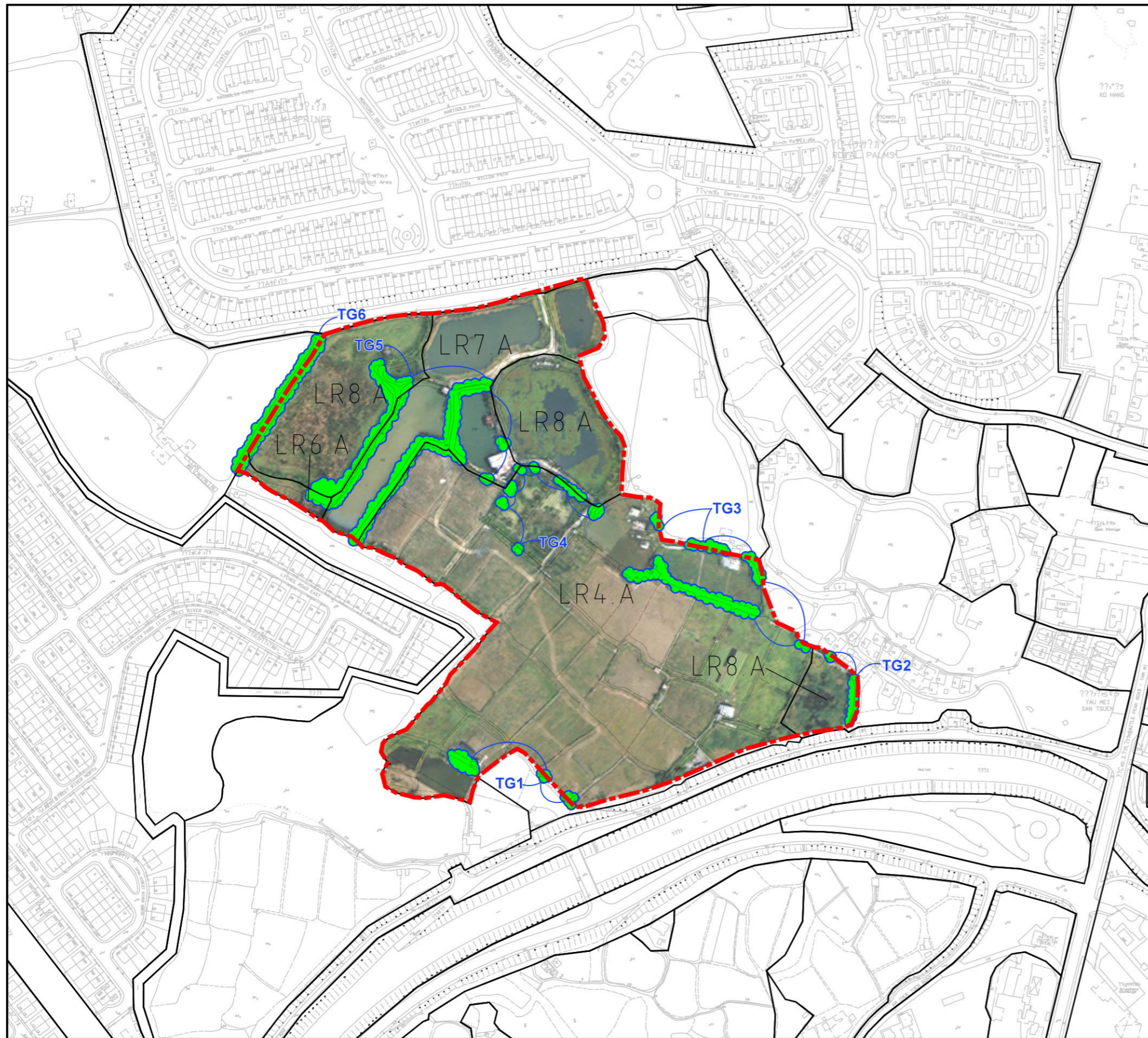


## **Appendix 11-1**

### Broad Brush Tree Survey Information



**LEGEND :**

 Project Site Boundary  
 Existing Tree Group

 LANDSCAPE RESOURCES  
 (within Project Site)

**LANDSCAPE RESOURCES : (within Project Site)**

LR4.A - AGRICULTURAL FIELD

LR6.A - GRASSLAND SHRUBLAND

LR7.A - PONDS AND POND EDGE

LR8.A - MARSH / REEBED

*Refer to TSP-02 for tree groups outside the Project Site but within Assessment Area*

SCALE 1 : 3,000



NORTH



**Figure:** TSP-01

**Title:** Broadbrush Tree Survey Plan (within Project Site)

**Project:** Comprehensive Development and Wetland Protection near Yau Mei San Tsuen, Yuen Long

 ENVIRON

Drawn by: DK

Checked by: DK

Rev.: -

Date: DEC 2014



**LEGEND :**

- LANDSCAPE IMPACT ASSESSMENT AREA (500m FROM SITE)
- PROJECT AREA
- EXISTING TREE GROUP
- EXISTING OVT  
REGISTER NO: LCSD YL7  
LOCATION : CASTEL PEAK ROAD - TAM MI SECTION  
(IN FRONT OF GOLDEN AGE HOME FOR SENIOR CITIZENS)  
SPECIES : MELALEUCA CAJUPUTI SUBSP. CUMINGIANA  
SIZE : 17M (H) ; 13M (S) AND 1490mm (DBH)

**LANDSCAPE RESOURCES :**

- LR1.B - LOCAL ROADS
- LR 2.B1 - COMPREHENSIVE REISIDENTIAL SETTLEMENTS
- LR2.B2 - VILLAGE SETTLEMENTS
- LR3.B - OPEN STORAGE / VACANT LOT
- LR4.B - AGRICULTURLA FIELD
- LR5.B - PLANTATION
- LR6.B - GRASSLAND / SHRUBLAND
- LR7.B - PONDS AND POND EDGE
- LR6.B - MARSH REEDBED
- LR9.B - MODIFIED WATERCOURSE
- LR10.B - PUBLIC AMENITY AREA
- LR11.B - HIGHWAYS



<b>Figure:</b> TSP-02	
<b>Title:</b> Broadbrush Tree Survey Plan (outside Project Site but within Assessment Area)	Drawn by: DK
<b>Project:</b> Comprehensive Development and Wetland Protection near Yau Mei San Tsuen, Yuen Long	Checked by: DK
	Rev.: -
	Date: DEC 2014

# Proposed Comprehensive Residential Development and Wetland Protection near Yau Mei San Tsuen, Yuen Long

Broadbrush Tree Survey Schedule (within the Project Site)

Appendix 11-1 : Schedule 1

TREE GROUP No.	ASSOCIATED LANDSCAPE RESOURCES	BOTANICAL NAME	CHINESE NAME	APPROX. NOS	SIZE (m)			FORM (G/F/FP)	HEALTH (G/F/FP)	AMENITY (H/M/L)	SURVIVAL AFTER TRANSPLANTING (H/M/L)	PROPOSED ACTION		
					OVERALL HEIGHT	CROWN SPREAD	TRUNK DIAMETER					RETAIN	FELL	TRANSPLANT
TG1	LR4.A Agricultural Field	<i>Carica papaya</i>	番木瓜	2	3 - 4	1	0.12 - 0.18	P - F	F	L	L	0	2	0
		<i>Dimocarpus longan</i>	龍眼	1	5	4	0.12	F	F	L-M	L-M	0	0	1
		<i>Litchi chinensis</i>	荔枝	2	5	4	0.11 - 0.13	P	F	L	L-M	0	1	1
		<i>Mangifera indica</i>	芒果	2	5	3	0.15 - 0.2	F	F	L-M	L	0	2	0
		<b>TG1 SUBTOTAL</b>		<b>7</b>									<b>0</b>	<b>5</b>
TG2	LR8.A Marsh/Reedbed	<i>Dimocarpus longan</i>	龍眼	1	5	4	0.15	P	P	L	L	1	0	0
		<i>Litchi chinensis</i>	荔枝	2	7 - 9	5 - 6	0.22 - 0.28	F - G	F	L	L-M	2	0	0
		<i>Macaranga tanarius</i>	血桐	1	5	5	0.11	P	F	L	L-M	0	1	0
		<i>Mangifera indica</i>	芒果	2	5 - 8	3 - 4	0.11 - 0.25	P	F	L-M	L	0	2	0
		<b>TG2 SUBTOTAL</b>		<b>6</b>									<b>3</b>	<b>3</b>
TG3	LR4.A Agricultural Field	<i>Clausena lansium</i>	黃皮	3	3 - 4	3	0.10	P - F	F	L	L	0	3	0
		<i>Dimocarpus longan</i>	龍眼	5	5	3	0.1 - 0.16	P	F	L-M	L-M	0	5	0
		<i>Diospyros kaki</i>	柿	1	4	2	0.17	F	F	L	L	0	1	0
		<i>Litchi chinensis</i>	荔枝	18	3 - 5	3 - 5	0.10 - 0.29	P - F	P - F	L	L	3	12	3
		<i>Mangifera indica</i>	芒果	9	5	3 - 5	0.16 - 0.32	P	F	L-M	L	0	9	0
		<b>TG3 SUBTOTAL</b>		<b>36</b>									<b>3</b>	<b>30</b>
TG4	LR4.A Agricultural Field	<i>Clausena lansium</i>	黃皮	1	2	2	0.13	P	F	L	L	0	1	0
		<i>Dimocarpus longan</i>	龍眼	3	2 - 6	2 - 5	0.13 - 0.16	P - F	F	L-M	L-M	0	1	2
		<i>Litchi chinensis</i>	荔枝	7	1.5 - 4	2 - 4	0.10 - 0.19	P - F	F	L-M	L-M	0	4	3
		<i>Mangifera indica</i>	芒果	3	3 - 5	3 - 4	0.11 - 0.16	P	F	L-M	L	0	3	0
		<b>TG4 SUBTOTAL</b>		<b>14</b>									<b>0</b>	<b>9</b>
TG5	LR7.A Pond and Pond Edge	<i>Artocarpus macrocarpus</i>	菠蘿蜜	7	3 - 6	3 - 5	0.10 - 0.16	P - F	P - F	L	L	0	7	0
		<i>Carica papaya</i>	番木瓜	1	2	1	0.11	P	F	L	L	0	1	0
		<i>Citrus maxima</i>	柚	1	5	4	0.19	P	F	L	L-M	0	1	0
		<i>Clausena lansium</i>	黃皮	3	1.5 - 4	1 - 4	0.10 - 0.13	P	F	L	L	0	3	0
		<i>Dimocarpus longan</i>	龍眼	5	2 - 4	3 - 4	0.10	P	F	L-M	L-M	0	5	0
		<i>Litchi chinensis</i>	荔枝	28	1.5 - 4	1 - 4	0.10 - 0.19	P	F	L-M	L-M	0	28	0
		<i>Mangifera indica</i>	芒果	3	3 - 8	4 - 7	0.11 - 0.29	P	F	L	L	0	3	0
		<b>TG5 SUBTOTAL</b>		<b>48</b>									<b>0</b>	<b>48</b>
TG6	LR8.A Marsh/Reedbed	<i>Artocarpus macrocarpus</i>	菠蘿蜜	15	3 - 6	1 - 5	0.10 - 0.22	P - F	P - F	L	L	0	15	0
		<i>Clausena lansium</i>	黃皮	14	1.5 - 5	1 - 3	0.10 - 0.15	P - F	P - F	L	L	0	14	0
		<i>Litchi chinensis</i>	荔枝	26	2 - 5	1.5 - 5	0.10 - 0.24	P - F	P - F	L-M	L-M	0	26	0
		<i>Mangifera indica</i>	芒果	2	5	3 - 5	0.16 - 0.22	P	P - F	L-M	L	0	2	0
		<b>TG6 SUBTOTAL</b>		<b>57</b>									<b>0</b>	<b>57</b>

**GRAND TOTAL WITHIN THE PROJECT SITE : 168 NOS.**

**SCHEDULE 2 – Broadbrush Tree Survey Schedule (outside Project Site but within Assessment Area)**

Landscape Resource	Botanical Name	Size (m)		Condition		Amenity value (L/M/H)	Quantity (approx.)	Maturity
		Height	Spread	Form (P/F/G)	Health (P/F/G)			
LR1.B (Roads)	<i>Bauhinia</i> spp. (along Yau Pok Road) * <i>Bischofia javanica</i> <i>Bombax ceiba</i> <i>Cassia fistula</i> <i>Cleistocalyx nervosum</i> <i>Delonix regia</i> (along Yau Pok Road) * <i>Eucalyptus</i> spp. (along Castle Peak Road) * <i>Ficus microcarpa</i> <i>Hibiscus tiliaceus</i> <i>Lagerstroemia speciosa</i> <i>Leucaena leucocephala</i> <i>Macaranga tanarius</i> var. <i>tomentosa</i> <i>Melia azedarach</i> <i>Melaleuca cajuputi</i> subsp. <i>cumingiana</i> * <i>Peltophorum pterocarpum</i> <i>Pterocarpus indicus</i> <i>Spathodea campanulata</i> <i>Syzygium jambos</i>	3 - 12	2 - 8	P	P-F	L	400	Young to mature
	<b><u>Old and Valuable Tree (No. LCSD YL/7)</u></b> <i>Melaleuca cajuputi</i> subsp. <i>cumingiana</i>	17	13	F	F	H		
LR2.B1 (Residential Estate Settlement)	<i>Acacia confusa</i> <i>Albizia lebbbeck</i> <i>Aleurites moluccana</i> <i>Archontophoenix alexandrae</i> * <i>Aracauria heterophylla</i> * <i>Bauhinia</i> spp. <i>Bombax ceiba</i> <i>Callistemon viminalis</i> <i>Celtis sinensis</i> <i>Chrysalidocarpus lutescens</i> <i>Cinnamomum burmanii</i> <i>Delonix regia</i> * <i>Ficus benjamina</i> <i>Ficus microcarpa</i> <i>Ficus virens</i> var. <i>sublanceolata</i> <i>Grevillea robusta</i> <i>Hibiscus tiliaceus</i> <i>Juniperus chinensis</i> <i>Khaya senegalensis</i> <i>Lagerstromia speciosa</i> <i>Macaranga tanarius</i> var. <i>tomentosa</i> <i>Melaleuca cajuputi</i> subsp. <i>cumingiana</i>	3 - 13	3 - 10	P	P-F	L	1300	Young to mature

Landscape Resource	Botanical Name	Size (m)		Condition		Amenity value (L/M/H)	Quantity (approx.)	Maturity
		Height	Spread	Form (P/F/G)	Health (P/F/G)			
	<i>Melia azedarach</i> <i>Michelia x alba</i> <i>Musa spp.</i> <i>Phoenix roebelenii</i> <i>Roystonea regia</i> * <i>Salix babylonica</i> <i>Sapium sebiferum</i> <i>Taxodium distichum</i>							
LR2.B2 (Village Settlements)	<i>Araucaria heterophylla</i> <i>Archontophoenix alexandrae</i> * <i>Averrhoa carambola</i> <i>Bauhinia spp.</i> <i>Bischofia japonica</i> <i>Bombax ceiba</i> <i>Celtis sinensis</i> <i>Cinnamomum camphora</i> <i>Citrus maxima</i> <i>Clausena lansium</i> <i>Delonix regia</i> <i>Dimocarpus longan</i> * <i>Dracontomelon duperreanum</i> <i>Elaeocarpus rugosus</i> <i>Ficus benjamina</i> <i>Ficus microcarpa</i> <i>Hibiscus tiliaceus</i> <i>Juniperus chinensis var. kaizuca</i> <i>Lagetroemia speciosa</i> <i>Litchi chinensis</i> * <i>Livistonia chinensis</i> <i>Macaranga tanarius var. tomentosa</i> <i>Mangifera indica</i> <i>Melaleuca cajuputi subsp. cumingiana</i> <i>Melia azedarach</i> <i>Michelia x alba</i> <i>Morus alba</i> <i>Phoenix roebelenii</i> <i>Psidium guajava</i> <i>Sapium sebiferum</i> <i>Syzygium jambos</i> <i>Terminalia mantaly</i>	3 - 13	3 - 10	P	P-F	L	350	Young to mature
LR3.B (Open Storage)	<i>Archontophoenix alexandrae</i> <i>Artocarpus heterophyllus</i> <i>Bauhinia spp.</i> <i>Bombax ceiba</i> *	4 - 12	3 - 8	P	P-F	L	250	Young

Landscape Resource	Botanical Name	Size (m)		Condition		Amenity value (L/M/H)	Quantity (approx.)	Maturity
		Height	Spread	Form (P/F/G)	Health (P/F/G)			
	<i>Casuarina equisetifolia</i> <i>Ficus microcarpa</i> * <i>Leucaena leucocephala</i> <i>Macaranga tanarius var tomentosa</i> <i>Melaleuca cajuputi subsp. Cumingiana</i>							
LR4.B (Agricultural Field)	<i>Dimocarpus longan</i> * <i>Leucaena leucocephala</i> <i>Litchi chinensis</i> *) <i>Macaranga tanarius var. tomentosa</i>	4 - 6	5 - 7	P-F	P-F	L	80	Young
LR5.B (Plantation)	<i>Averrhoa carambola</i> <i>Bombax ceiba</i> * <i>Celtis sinensis</i> <i>Clausena lansium</i> <i>Cleistocalyx nervosum</i> <i>Delonix regia</i> <i>Eucalyptus spp</i> * <i>Ficus altissima</i> <i>Ficus benjamina</i> * <i>Ficus binnendijkii</i> <i>Ficus microcarpa</i> <i>Hibiscus tiliaceus</i> * <i>Lagerstroemia speciosa</i> * <i>Leucaena leucocephala</i> <i>Litchi chinensis</i> <i>Macaranga tanarius var. tomentosa</i> <i>Melaleuca cajuputi subsp. cumingiana</i> * <i>Spathodea campanulata</i> <i>Syzygium jambos</i>	3 - 12	3 - 13	P	P-F	L	250	Young to mature
LR6.B (Grassland/ Shrubland)	<i>Leucaena leucocephala</i> * <i>Macaranga tanarius var. tomentosa</i> * <i>Cinnamomum camphora</i> <i>Dimocarpus longan</i>	3 - 5	5 - 6	P	P	L	200	Young
LR7.B (Ponds)	<i>Acacia auriculiformis</i> <i>Albizia lebeck</i> <i>Aleurites moluccana</i> <i>Annona squamosa</i> <i>Artocarpus heterophyllus</i> <i>Bauhinia spp.</i> <i>Bombax ceiba</i> <i>Callistemon viminalis</i> <i>Carica papaya</i> <i>Casuarina equisetifolia</i> <i>Celtis sinensis</i>	2 - 10	3 - 9	P	P-F	L	380	Young

Landscape Resource	Botanical Name	Size (m)		Condition		Amenity value (L/M/H)	Quantity (approx.)	Maturity
		Height	Spread	Form (P/F/G)	Health (P/F/G)			
	<i>Cinnamomum camphora</i> <i>Citrus maxima</i> <i>Clausena lansium</i> <i>Dimocarpus longan</i> * <i>Diospyros kaki</i> <i>Ficus hispida</i> <i>Ficus microcarpa</i> <i>Khaya senegalensis</i> <i>Litchi chinensis</i> * <i>Macaranga tanarius</i> var. <i>tomentosa</i> * <i>Mangifera indica</i> <i>Melia azedarach</i> <i>Peltophorum pterocarpum</i> <i>Syzygium cumini</i> <i>Syzygium jambos</i>							
LR8.B (Marsh/ Reedbed)	<i>Clausena lansium</i> <i>Dimocarpus longan</i> * <i>Litchi chinensis</i> * <i>Macaranga tanarius</i> var. <i>tomentosa</i> <i>Mangifera indica</i>	1 - 2	3 - 4	P-F	P	L	80	Young
LR9.B (Modified Watercourse)	<i>Leucaena leucocephala</i> *	1 - 2	3 - 4	P	P	L	100	Young
LR10.B (Public Amenity Area)	<i>Cassia fistula</i> * <i>Delonix regia</i> <i>Peltophorum pterocarpum</i> *	3 - 5	2 - 4	G	G	M	60	Young
LR11.B (Highways)	<i>Bombax ceiba</i> <i>Eucalyptus</i> spp. * <i>Lagerstroemia speciosa</i>	12 – 15	6 – 8	P	P-F	L	500	Young - Mature
<b>GRAND TOTAL OUTSIDE PROJECT SITE BUT WITHIN ASSESSMENT AREA:</b>							<b>3,950</b>	

\* Predominant species




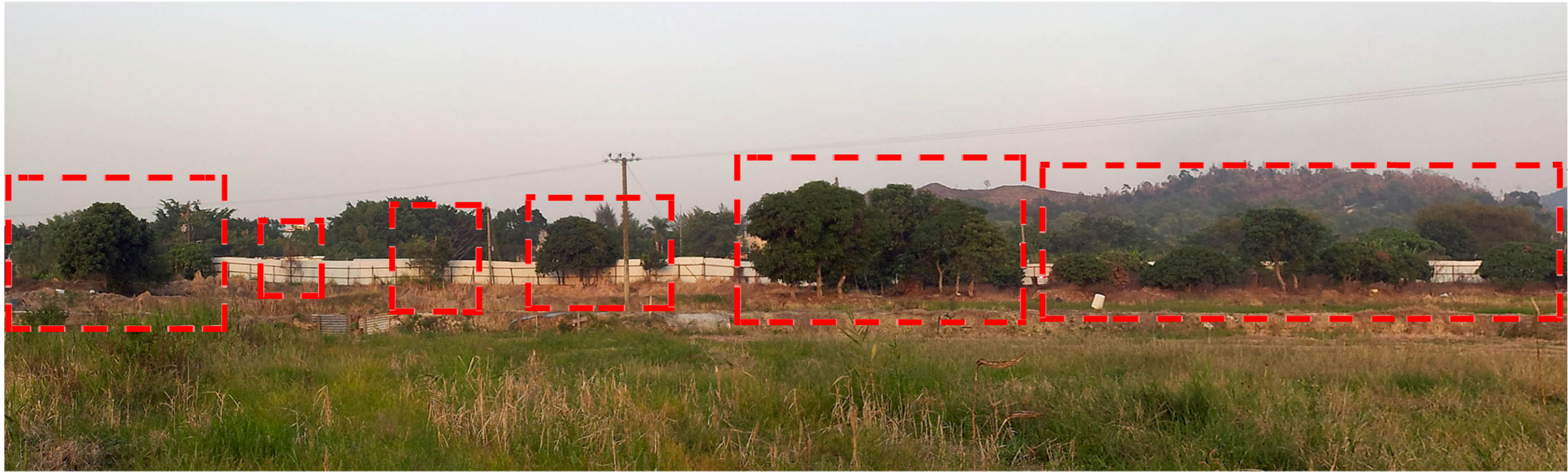


**Tree Group No. TG1**



**Tree Group No. TG2**

<b>Appendix:</b> 11- 1	 ENVIRON
<b>Title:</b> Broadbrush Tree Photographs Within Project Site (Page 1 of 3)	Drawn by: DK Checked by: AM
<b>Project:</b> Comprehensive Development and Wetland Protection near Yau Mei San Tsuen, Yuen Long	Rev.: - Date: DEC 2014



**Tree Group No.TG3**



**Tree Group No.TG4**

**Appendix:** 11- 1

**Title:** Broadbrush Tree Photographs Within Project Site (Page 2 of 3)

**Project:** Comprehensive Development and Wetland Protection near Yau Mei San Tsuen, Yuen Long

 ENVIRON

Drawn by: DK

Checked by: AM

Rev.: -

Date: DEC 2014



**Tree Group No. TG5**



**Tree Group No. TG6**

**Appendix:** 11- 1

**Title:** Broadbrush Tree Photographs Within Project Site (Page 3 of 3)

**Project:** Comprehensive Development and Wetland Protection near Yau Mei San Tsuen, Yuen Long



Drawn by: DK

Checked by: AM

Rev.: -

Date: DEC 2014