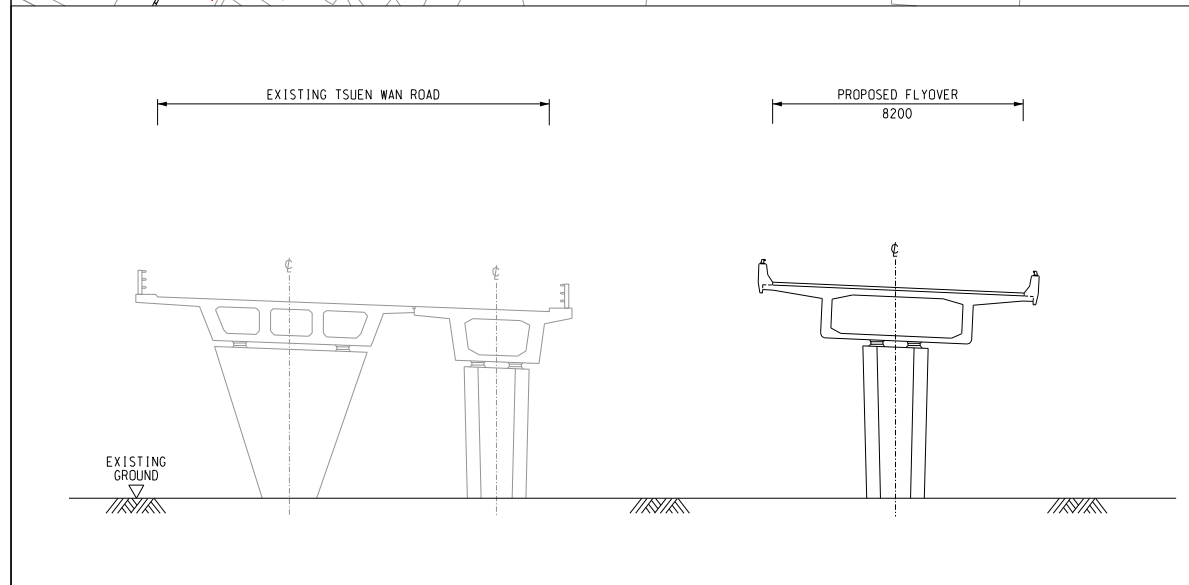
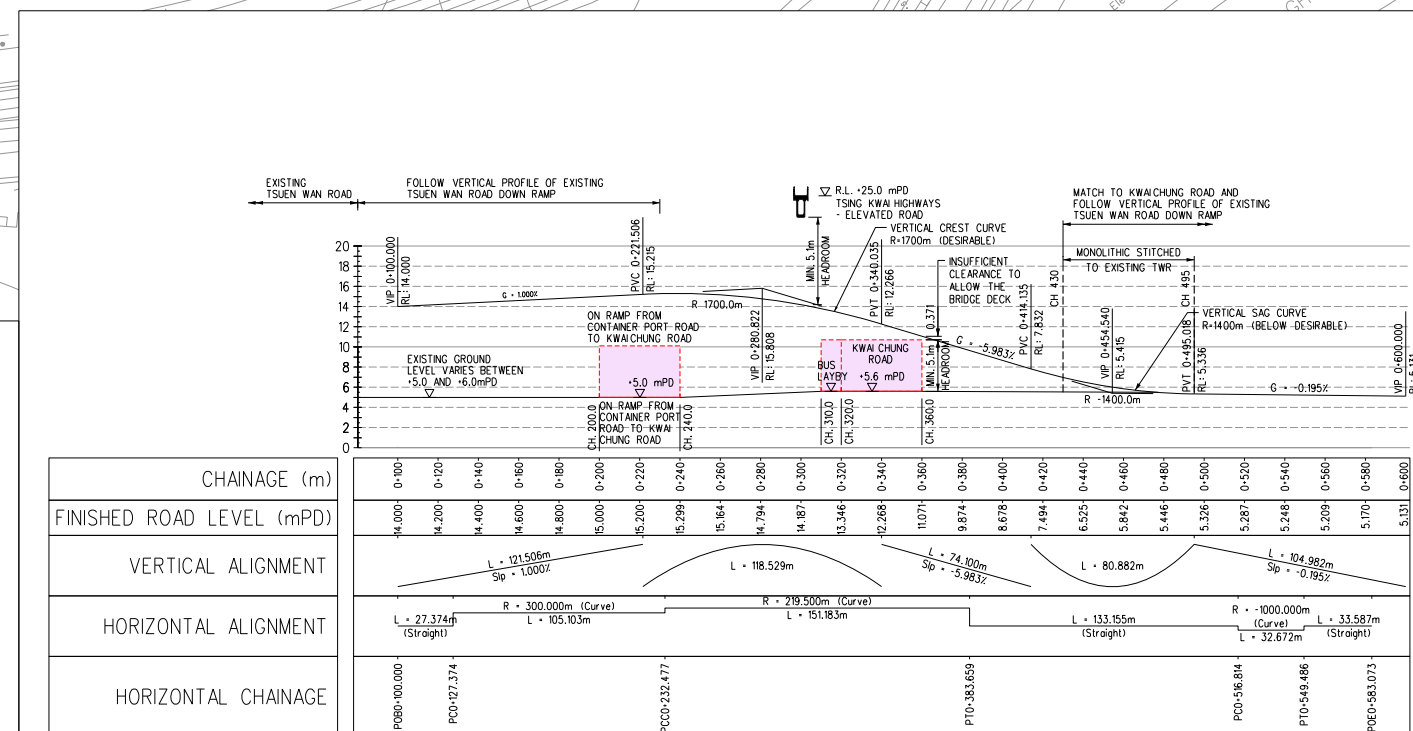


- LEGEND:**
- EXISTING TRAFFIC DIRECTION (ONE ARROW REPRESENTS ONE LANE)
 - PROPOSED VIADUCT / WIDENING OF BRIDGE DECK
 - OPTION 2B: ROUTING
 - PROPOSED REPROVISIONED FOOTBRIDGE
 - DRAINAGE RESERVE
 - PROPOSED NOISE ENCLOSURE
 - PROPOSED MOVEMENT JOINT BETWEEN EXISTING AND PROPOSED STRUCTURES
 - PROPOSED MONOLITHIC STITCHED JOINT BETWEEN EXISTING AND PROPOSED STRUCTURES
 - EXISTING COLUMN
 - PROPOSED COLUMN
 - PROPOSED PORTAL FRAME SPAN ACROSS DRAINAGE RESERVE
 - ROUTE 3 - TO TSIM SHA TSUI, HONG KONG (W), LANTAU
 - ROUTE 5 - TO KWUN TONG, LAI CHI KOK, MONG KOK
 - EXISTING ROAD LEVEL IN mPD (APPROX.)
 - PROPOSED ROAD LEVEL IN mPD (APPROX.)
- ABBREVIATIONS:**
- PVI - POINT OF VERTICAL INTERSECTION
 - PVC - POINT OF VERTICAL CURVATURE
 - PVT - POINT OF VERTICAL TANGENCY
 - RL - FINISHED ROAD LEVEL



SECTION 1 - 1
SCALE N.T.S.



VERTICAL PROFILE
SCALE N.T.S.

Rev.	Date	Description	Drawn	Checked

土木工程拓展署
 Civil Engineering and Development Department

OFFICE: NEW TERRITORIES NORTH AND WEST DEVELOPMENT OFFICE

AGREEMENT NO. CE 8/2012 (HY)
 FLYOVER FROM KWAI TSING INTERCHANGE UP RAMP TO KWAI CHUNG ROAD - INVESTIGATION

OPTION 2B: SEPARATE VIADUCT ON WEST SIDE OF TWR AND MERGING NEARSIDE LANE OF TWR WITH KCR UP RAMP (DESIGN SPEED 70KM/H)

Drawing No. **FIGURE 2.7**

Designed	HC	Drawn	CMH	Checked	HCKL	Scale	1:750 (A1)
Approved	TSN	Date	12/14	Status	PRELIMINARY		

