



By Fax (2527 8490)

本署檔號 Our Ref. TD HR 146/192/SHE-8(L)
 來函檔號 Your Ref. CHK50008710/GPH/L1401459/jch
 電話 Tel. 2829 5419
 圖文傳真 Fax. 2824 0399

24 September 2014

MVA Hong Kong Limited
 (Attn.: Mr. George LEE)

Dear Mr. LEE,

**Chai Wan Government Complex and Vehicle Depot
 at Sheung Tat Street, Chai Wan
Technical Note of Traffic Forecast for Environmental Impact Assessment Study**

I refer to your letter dated 11.9.2014 regarding the captioned. I have no comment on the Technical Note of Traffic Forecast for EIA Study for the captioned project from traffic point of view.

MVA/CHK50008710		
Job No.	00318731	
Reg. No.	00318731	
Date In	15.9.2014	
Initials	Action Date	Copy Date
PM/	SM	25/9
PD/	SM	25/9
DIC/		
Duplicate	Filing Clerk	Day File
		25/9
Copy Ref.		
Reply Date		
File No.		

Yours faithfully,

Keith Lai
 (Keith Lim-chun LAI)
 for Commissioner for Transport

2

Year 2018 Traffic Forecast

Road ID	AM Peak of Proposed Project Generated Traffic (0800-0900 hrs)				PM Peak of Proposed Project Generated Traffic (1500-1600 hrs)			
	With Project		Without Project		With Project		Without Project	
	Veh/hr	HV%	Veh/hr	HV%	Veh/hr	HV%	Veh/hr	HV%
1	483	48%	483	48%	473	43%	473	43%
2	558	39%	558	39%	486	48%	486	48%
3	1980	40%	1966	40%	1720	45%	1699	44%
4	1821	45%	1792	44%	1604	42%	1589	42%
5	1335	44%	1306	43%	1110	42%	1095	42%
6	1424	40%	1410	40%	1212	43%	1191	43%
7	997	40%	997	40%	847	46%	847	46%
8	1475	44%	1475	44%	1231	43%	1231	43%
9	1117	41%	1117	41%	967	47%	967	47%
10	275	33%	275	33%	286	39%	286	39%
11	1200	47%	1200	47%	948	44%	948	44%
12	1225	44%	1225	44%	1161	46%	1161	46%
13	372	36%	372	36%	400	38%	400	38%
14	165	25%	165	25%	101	26%	101	26%
15	59	34%	59	34%	53	45%	53	45%
16	491	52%	477	52%	438	49%	417	47%
17	229	58%	200	55%	236	53%	221	52%
18	368	52%	368	52%	323	48%	323	48%
19	143	52%	143	52%	125	58%	125	58%
20	412	42%	412	42%	371	38%	371	38%
21	153	56%	153	56%	129	57%	129	57%
22	255	56%	255	56%	260	53%	260	53%
23	109	61%	80	54%	143	55%	128	52%
24	202	64%	202	64%	202	56%	202	56%
25	261	44%	232	39%	269	41%	254	39%
26	427	41%	413	41%	365	38%	344	36%
27	118	55%	118	55%	117	57%	117	57%
28	87	64%	58	55%	113	48%	98	44%
29	123	50%	109	49%	121	52%	100	46%
30	66	71%	37	62%	81	47%	66	41%
31	43	63%	29	66%	73	67%	52	62%
32	55	69%	55	69%	41	46%	41	46%
33	21	90%	21	90%	33	88%	33	88%
34	171	51%	171	51%	133	38%	133	38%
35	130	82%	130	82%	86	72%	86	72%
36	117	61%	103	61%	126	61%	105	57%
37	92	86%	63	87%	85	66%	70	64%
38	145	57%	145	57%	141	61%	141	61%
39	98	82%	98	82%	88	65%	88	65%
40	160	51%	160	51%	248	46%	248	46%
41	139	61%	139	61%	167	60%	167	60%
42	472	46%	472	46%	515	42%	515	42%
43	71	61%	71	61%	45	69%	45	69%
44	183	66%	183	66%	245	49%	245	49%
45	854	47%	854	47%	762	51%	762	51%
46	402	62%	402	62%	346	62%	346	62%
47	74	82%	74	82%	137	36%	137	36%
48	197	79%	197	79%	155	90%	155	90%
49	96	71%	96	71%	70	76%	70	76%
50	23	61%	23	61%	35	31%	35	31%
51	102	80%	102	80%	155	44%	155	44%
52	344	56%	344	56%	297	51%	297	51%

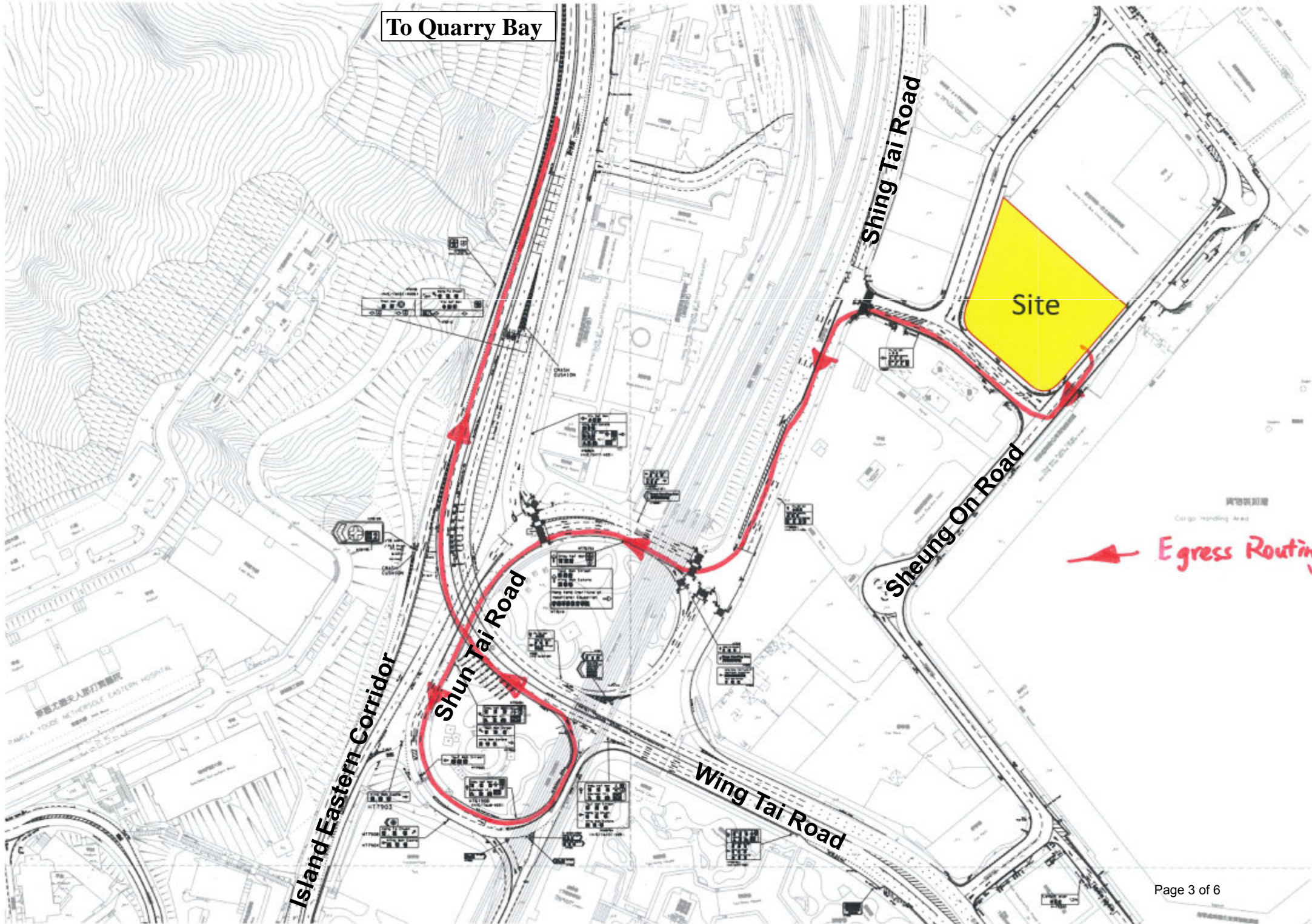
Note: HV% denotes percentage of heavy vehicles of a particular road section.

Year 2033 Traffic Forecast

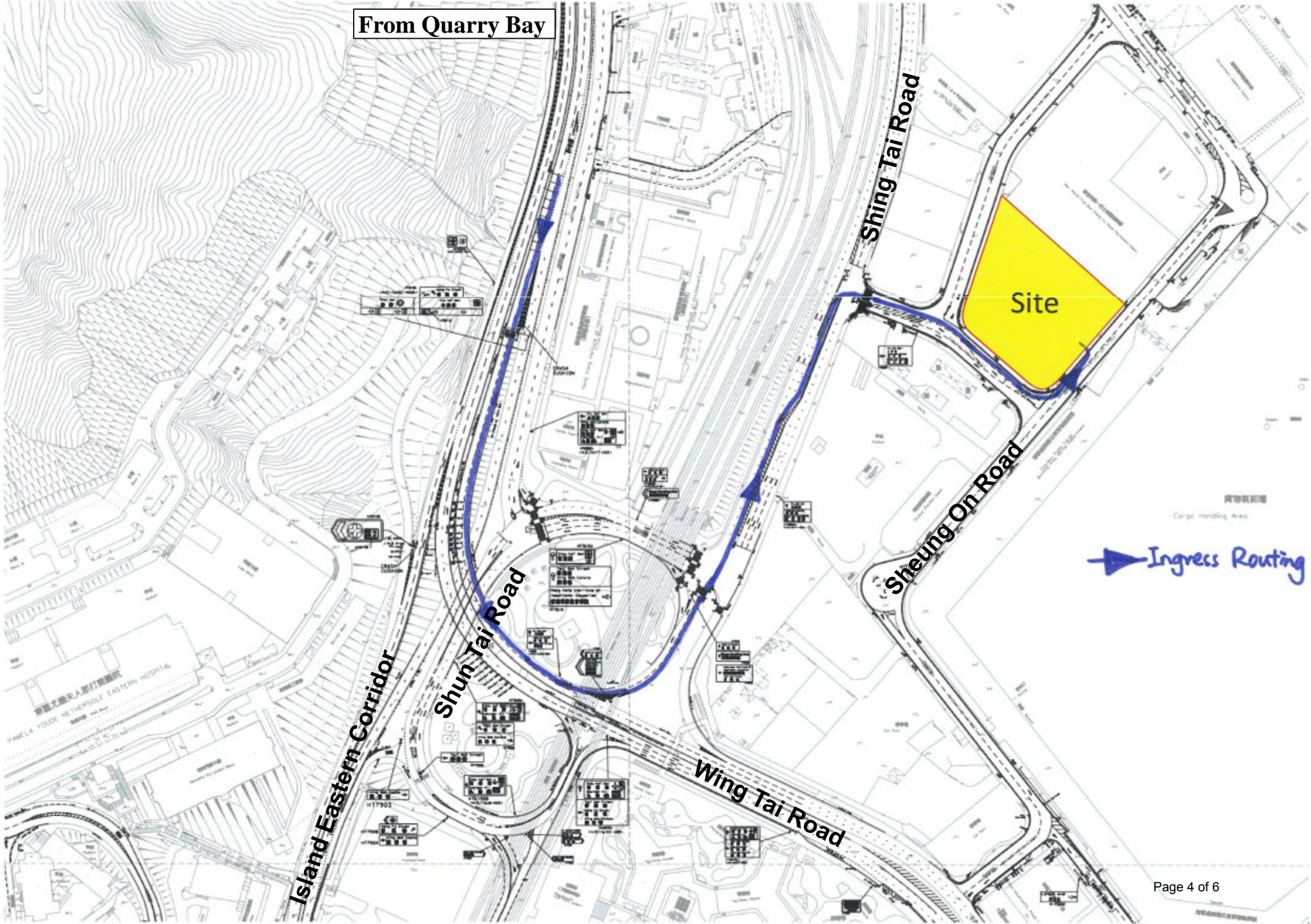
Road ID	AM Peak of Proposed Project Generated Traffic (0800-0900 hrs)				PM Peak of Proposed Project Generated Traffic (1500-1600 hrs)			
	With Project		Without Project		With Project		Without Project	
	Veh/hr	HV%	Veh/hr	HV%	Veh/hr	HV%	Veh/hr	HV%
1	531	48%	531	48%	518	43%	518	43%
2	611	39%	611	39%	534	47%	534	47%
3	2173	40%	2159	40%	1889	45%	1868	44%
4	1997	45%	1968	44%	1763	42%	1748	42%
5	1463	44%	1434	43%	1222	42%	1207	42%
6	1565	40%	1551	40%	1329	43%	1308	43%
7	1095	39%	1095	39%	932	46%	932	46%
8	1620	44%	1620	44%	1354	43%	1354	43%
9	1228	41%	1228	41%	1062	47%	1062	47%
10	299	32%	299	32%	316	39%	316	39%
11	1321	47%	1321	47%	1043	44%	1043	44%
12	1345	44%	1345	44%	1275	46%	1275	46%
13	409	36%	409	36%	442	38%	442	38%
14	178	24%	178	24%	108	24%	108	24%
15	63	32%	63	32%	56	43%	56	43%
16	539	52%	525	52%	476	49%	455	47%
17	246	57%	217	54%	255	53%	240	51%
18	401	52%	401	52%	355	48%	355	48%
19	156	52%	156	52%	134	57%	134	57%
20	453	43%	453	43%	408	38%	408	38%
21	166	55%	166	55%	138	57%	138	57%
22	278	56%	278	56%	283	53%	283	53%
23	114	61%	85	53%	154	54%	139	52%
24	221	64%	221	64%	222	56%	222	56%
25	280	43%	251	38%	292	40%	277	38%
26	470	41%	456	41%	399	38%	378	35%
27	127	54%	127	54%	126	56%	126	56%
28	90	63%	61	54%	121	46%	106	42%
29	130	48%	116	47%	127	50%	106	44%
30	68	71%	39	62%	85	45%	70	39%
31	43	63%	29	66%	76	66%	55	60%
32	56	68%	56	68%	43	44%	43	44%
33	21	90%	21	90%	35	89%	35	89%
34	187	50%	187	50%	144	38%	144	38%
35	142	82%	142	82%	90	71%	90	71%
36	125	60%	111	60%	135	61%	114	57%
37	97	87%	68	88%	90	66%	75	64%
38	159	57%	159	57%	153	61%	153	61%
39	107	82%	107	82%	95	64%	95	64%
40	173	51%	173	51%	272	46%	272	46%
41	150	61%	150	61%	183	60%	183	60%
42	518	46%	518	46%	566	42%	566	42%
43	75	59%	75	59%	47	68%	47	68%
44	201	66%	201	66%	266	48%	266	48%
45	939	47%	939	47%	838	51%	838	51%
46	439	62%	439	62%	378	62%	378	62%
47	77	83%	77	83%	150	35%	150	35%
48	216	79%	216	79%	169	91%	169	91%
49	105	71%	105	71%	76	76%	76	76%
50	23	61%	23	61%	37	30%	37	30%
51	111	80%	111	80%	171	44%	171	44%
52	379	55%	379	55%	324	51%	324	51%

Note: HV% denotes percentage of heavy vehicles of a particular road section.

To Quarry Bay



From Quarry Bay



► Ingress Routing

Estimation of Ingress Traffic at Proposed Chai Wan Depot (including Special Purpose Vehicles)

Time Slot	Vehicle Type									Other (Please Specify)	Total
	General Purpose Vehicle						Special Purpose Vehicle				
	Private Car	Motor Cycle	Light Bus/Large Van	Medium Van	Light Truck	Other (Please Specify)	Refuse Collection Vehicle	Street Washing Vehicle	Grab Lorry		
0600-0700	0	0	0	0	0	0	0	0	0	0	0
0700-0800	2	1	0	0	0	0	1	0	0	0	4
0800-0900	2	4	6	1	1	0	0	0	0	0	14
0900-1000	2	2	3	1	1	0	0	0	0	0	9
1000-1100	2	2	3	4	1	0	2	0	0	0	14
1100-1200	2	2	6	2	0	0	0	0	0	0	12
1200-1300	2	2	4	4	2	0	8	0	0	0	22
1300-1400	2	1	4	1	0	0	0	2	0	0	10
1400-1500	1	1	6	3	1	0	0	1	2	0	15
1500-1600	2	2	6	8	2	0	1	0	0	0	21
1600-1700	1	1	10	2	3	0	0	0	0	0	17
1700-1800	1	1	2	3	1	0	0	0	0	0	8
1800-1900	0	1	4	0	0	0	0	0	0	0	5
1900-2000	0	0	2	0	0	0	0	0	0	0	2
2000-2100	0	0	5	1	1	0	0	0	0	0	7
2100-2200	2	0	7	1	1	0	3	0	0	0	14
2200-2300	0	0	0	0	0	0	1	1	0	0	2
2300-2400	0	0	1	0	0	0	0	0	0	0	1
2400-0100	2	0	2	0	1	0	0	0	0	0	5
0100-0200	0	0	0	1	0	0	0	0	0	0	1
0200-0300	0	1	0	0	0	0	0	0	0	0	1
0300-0400	0	0	0	0	0	0	0	0	0	0	0
0400-0500	0	0	0	0	0	0	0	0	0	0	0
0500-0600	0	2	0	0	0	0	0	0	0	0	2
	23	23	71	32	15	0	16	4	2	Total	186

Estimation of Egress Traffic at Proposed Chai Wan Depot (including Special Purpose Vehicles)

Time Slot	Vehicle Type									Other (Please Specify)	Total
	General Purpose Vehicle						Special Purpose Vehicle				
	Private Car	Motor Cycle	Light Bus/Large Van	Medium Van	Light Truck	Other (Please Specify)	Refuse Collection Vehicle	Street Washing Vehicle	Grab Lorry		
0600-0700	0	0	1	0	0	0	7	1	0	0	9
0700-0800	5	0	10	0	1	0	0	1	0	0	17
0800-0900	3	2	13	8	3	0	0	0	0	0	29
0900-1000	2	2	7	5	2	0	0	0	0	0	18
1000-1100	2	2	3	2	2	0	0	0	0	0	11
1100-1200	2	2	6	2	0	0	0	0	0	0	12
1200-1300	2	2	1	2	0	0	0	0	0	0	7
1300-1400	1	1	5	3	3	0	1	1	0	0	15
1400-1500	1	2	6	2	0	0	0	2	0	0	13
1500-1600	2	2	4	1	1	0	4	0	1	0	15
1600-1700	2	2	3	3	0	0	0	0	0	0	10
1700-1800	1	5	3	1	2	0	0	0	0	0	12
1800-1900	0	2	0	0	0	0	0	0	0	0	2
1900-2000	0	0	0	0	0	0	0	0	0	0	0
2000-2100	0	0	2	0	0	0	0	0	0	0	2
2100-2200	0	0	2	0	1	0	0	0	0	0	3
2200-2300	0	0	0	0	0	0	0	0	0	0	0
2300-2400	0	1	0	0	0	0	0	0	0	0	1
2400-0100	0	0	0	0	0	0	0	0	0	0	0
0100-0200	3	0	0	0	0	0	0	0	0	0	3
0200-0300	0	0	0	0	0	0	0	0	0	0	0
0300-0400	0	0	0	0	0	0	0	0	0	0	0
0400-0500	0	0	0	0	0	0	0	0	0	0	0
0500-0600	0	0	0	0	0	0	0	0	0	0	0
	26	25	66	29	15	0	12	5	1	Total	179