

INSET 1  
(near San Tau)

INSET 2  
(near Tung Chung Battery)

INSET 3  
(near existing Yat Tung Estate)

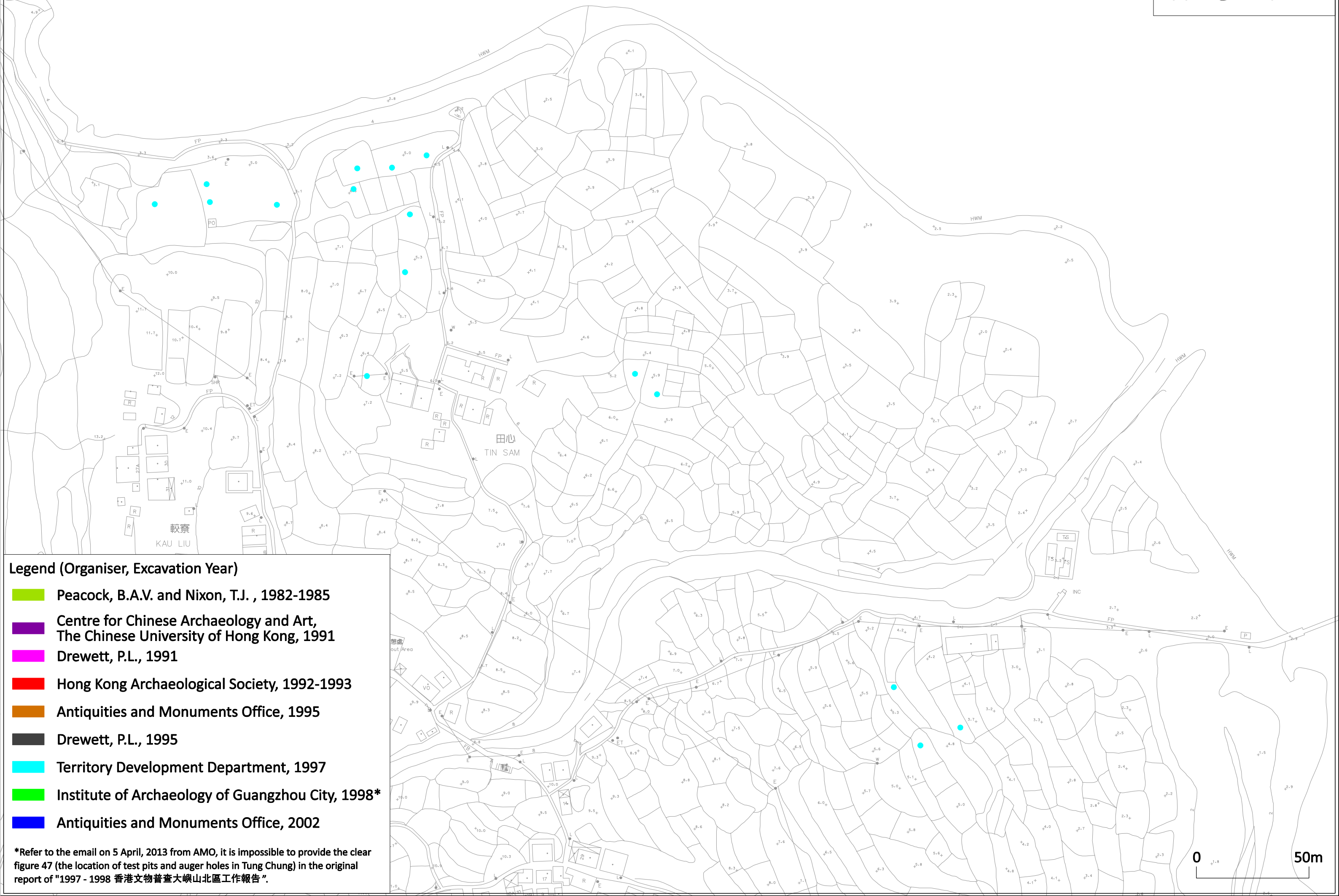
INSET 4  
(near Sha Tsui Tau)

INSET 5  
(near Chap Mun Tau & Shek Mun Kap)

- Legend (Organiser, Excavation Year)
- Peacock, B.A.V. and Nixon, T.J. , 1982-1985
  - Centre for Chinese Archaeology and Art, The Chinese University of Hong Kong, 1991
  - Drewett, P.L., 1991
  - Hong Kong Archaeological Society, 1992-1993
  - Antiquities and Monuments Office, 1995
  - Drewett, P.L., 1995
  - Territory Development Department, 1997
  - Institute of Archaeology of Guangzhou City, 1998\*
  - Antiquities and Monuments Office, 2002

\*Refer to the email on 5 April, 2013 from AMO, it is impossible to provide the clear figure 47 (the location of test pits and auger holes in Tung Chung) in the original report of "1997 - 1998 香港文物普查大嶼山北區工作報告".

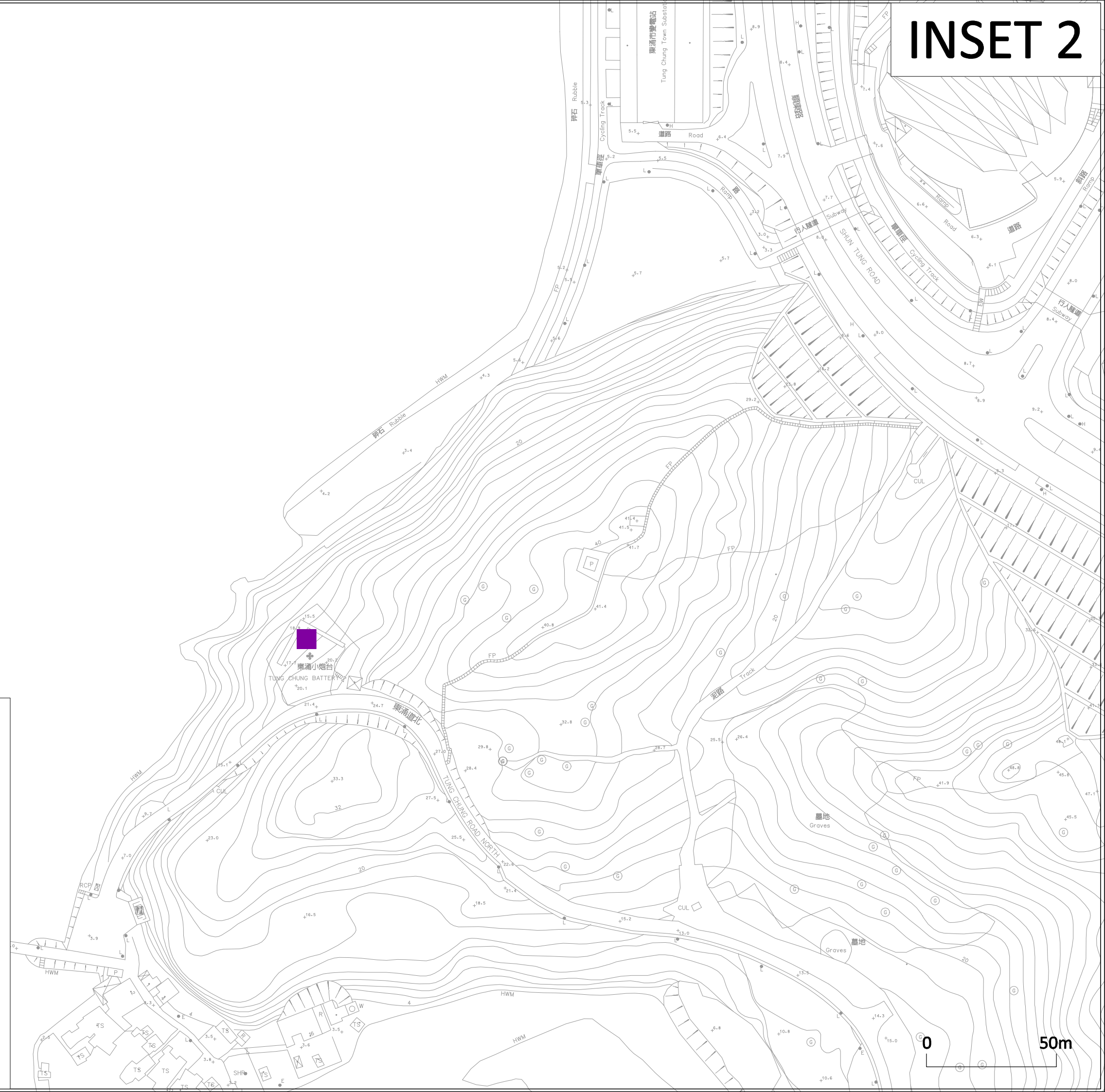




- Legend (Organiser, Excavation Year)**
- Peacock, B.A.V. and Nixon, T.J. , 1982-1985
  - Centre for Chinese Archaeology and Art, The Chinese University of Hong Kong, 1991
  - Drewett, P.L., 1991
  - Hong Kong Archaeological Society, 1992-1993
  - Antiquities and Monuments Office, 1995
  - Drewett, P.L., 1995
  - Territory Development Department, 1997
  - Institute of Archaeology of Guangzhou City, 1998\*
  - Antiquities and Monuments Office, 2002

\*Refer to the email on 5 April, 2013 from AMO, it is impossible to provide the clear figure 47 (the location of test pits and auger holes in Tung Chung) in the original report of "1997 - 1998 香港文物普查大嶼山北區工作報告".

# INSET 2



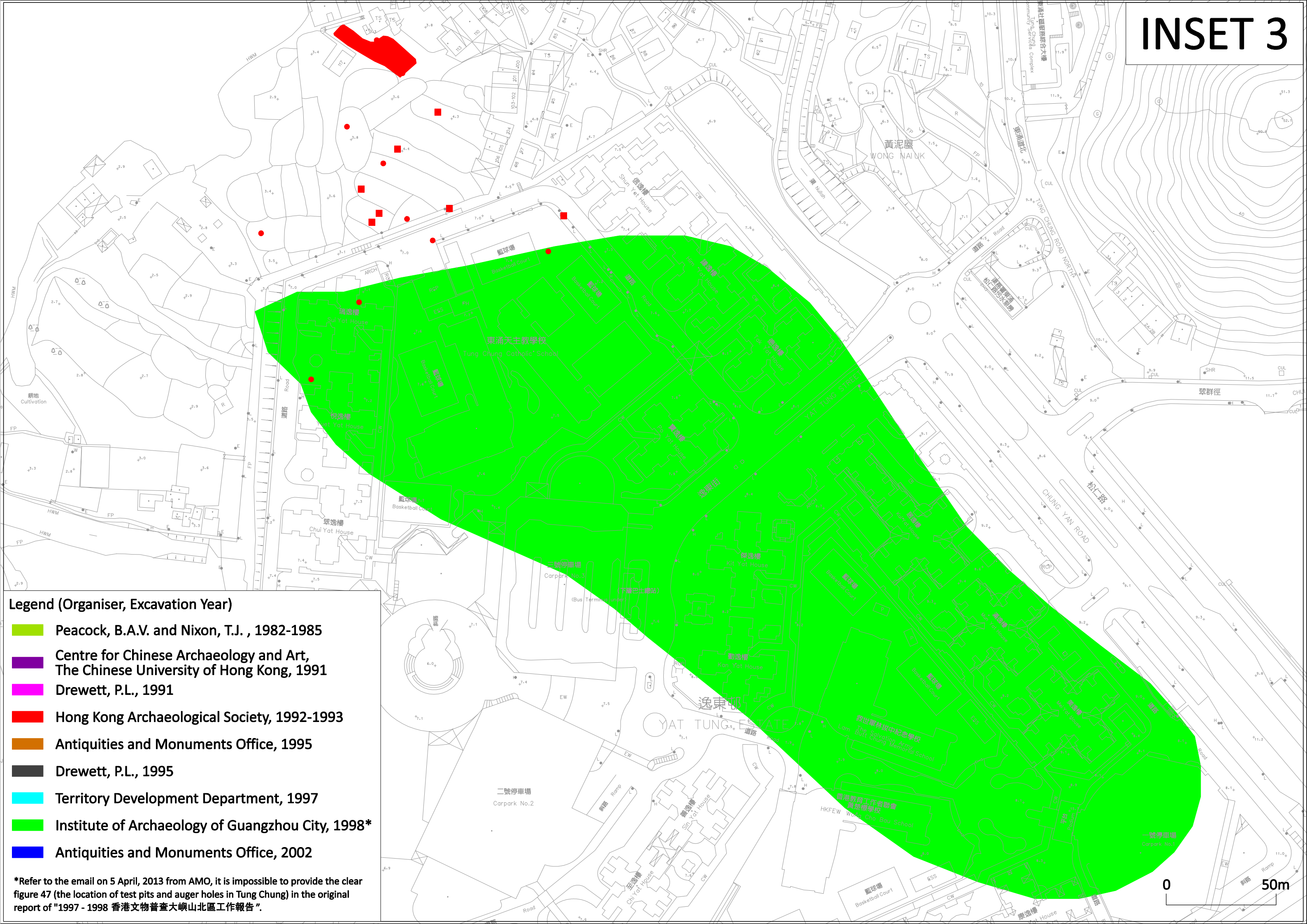
## Legend (Organiser, Excavation Year)

- Peacock, B.A.V. and Nixon, T.J. , 1982-1985
- Centre for Chinese Archaeology and Art, The Chinese University of Hong Kong, 1991
- Drewett, P.L., 1991
- Hong Kong Archaeological Society, 1992-1993
- Antiquities and Monuments Office, 1995
- Drewett, P.L., 1995
- Territory Development Department, 1997
- Institute of Archaeology of Guangzhou City, 1998\*
- Antiquities and Monuments Office, 2002

\*Refer to the email on 5 April, 2013 from AMO, it is impossible to provide the clear figure 47 (the location of test pits and auger holes in Tung Chung) in the original report of "1997 - 1998 香港文物普查大嶼山北區工作報告".

0 50m

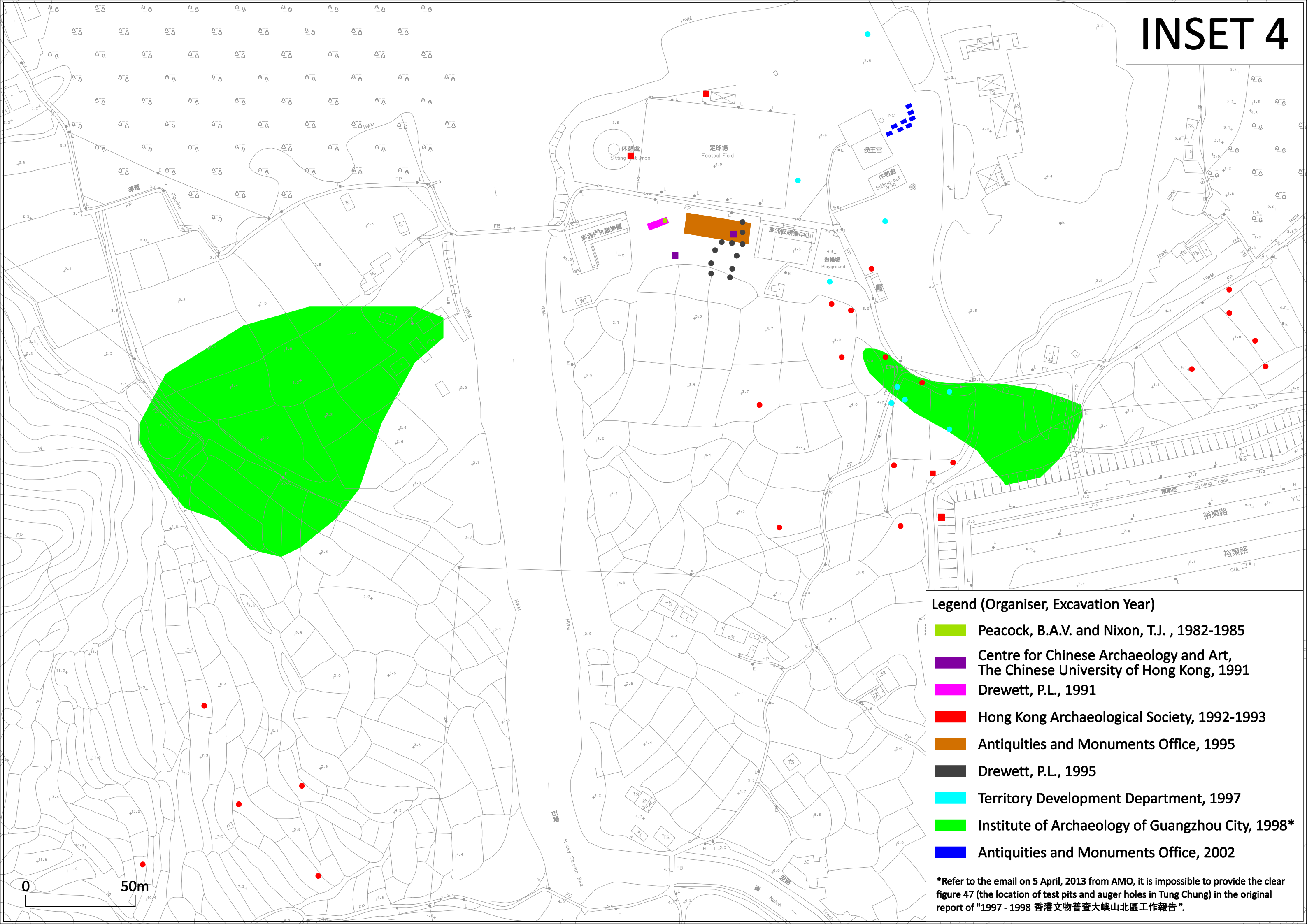




- Legend (Organiser, Excavation Year)**
- Peacock, B.A.V. and Nixon, T.J. , 1982-1985
  - Centre for Chinese Archaeology and Art, The Chinese University of Hong Kong, 1991
  - Drewett, P.L., 1991
  - Hong Kong Archaeological Society, 1992-1993
  - Antiquities and Monuments Office, 1995
  - Drewett, P.L., 1995
  - Territory Development Department, 1997
  - Institute of Archaeology of Guangzhou City, 1998\*
  - Antiquities and Monuments Office, 2002

\*Refer to the email on 5 April, 2013 from AMO, it is impossible to provide the clear figure 47 (the location of test pits and auger holes in Tung Chung) in the original report of "1997 - 1998 香港文物普查大嶼山北區工作報告".

# INSET 4



## Legend (Organiser, Excavation Year)

- Peacock, B.A.V. and Nixon, T.J. , 1982-1985
- Centre for Chinese Archaeology and Art, The Chinese University of Hong Kong, 1991
- Drewett, P.L., 1991
- Hong Kong Archaeological Society, 1992-1993
- Antiquities and Monuments Office, 1995
- Drewett, P.L., 1995
- Territory Development Department, 1997
- Institute of Archaeology of Guangzhou City, 1998\*
- Antiquities and Monuments Office, 2002

\*Refer to the email on 5 April, 2013 from AMO, it is impossible to provide the clear figure 47 (the location of test pits and auger holes in Tung Chung) in the original report of "1997 - 1998 香港文物普查大嶼山北區工作報告".



# INSET 5



- Legend (Organiser, Excavation Year)**
- Peacock, B.A.V. and Nixon, T.J. , 1982-1985
  - Centre for Chinese Archaeology and Art, The Chinese University of Hong Kong, 1991
  - Drewett, P.L., 1991
  - Hong Kong Archaeological Society, 1992-1993
  - Antiquities and Monuments Office, 1995
  - Drewett, P.L., 1995
  - Territory Development Department, 1997
  - Institute of Archaeology of Guangzhou City, 1998\*
  - Antiquities and Monuments Office, 2002

\*Refer to the email on 5 April, 2013 from AMO, it is impossible to provide the clear figure 47 (the location of test pits and auger holes in Tung Chung) in the original report of "1997 - 1998 香港文物普查大嶼山北區工作報告".