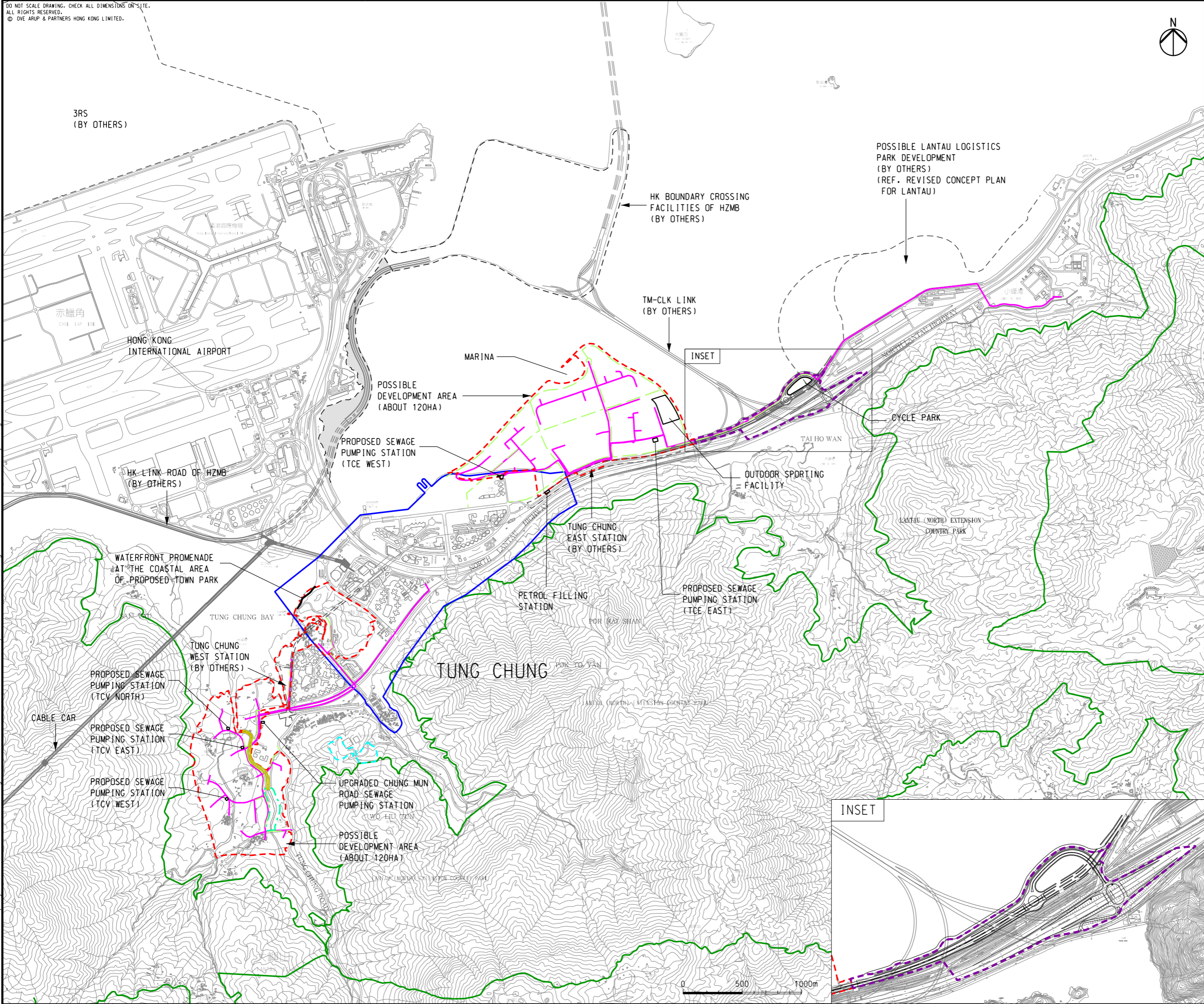


DO NOT SCALE DRAWING. CHECK ALL DIMENSIONS ON-SITE.  
ALL RIGHTS RESERVED.  
© OVE ARUP & PARTNERS HONG KONG LIMITED.



LEGEND

PROJECT COMPONENT

- POSSIBLE DEVELOPMENT AREA
- WORKS AREA FOR ROAD P1 (TUNG CHUNG - TAI HO SECTION)
- WORKS AREA FOR SERVICE RESERVOIR
- OTHER PROJECT ELEMENTS
- PROPOSED GRAVITY SEWER / RISING MAIN
- RE-VITALIZATION WORKS ALONG CHANNELIZED SECTION OF TUNG CHUNG STREAM (PARTLY PROPOSED AS RIVER PARK)
- PROPOSED RIVER PARK IN THE LAND ADJACENT TO THE IMMEDIATE UPSTREAM OF THE CHANNELIZED SECTION OF TUNG CHUNG STREAM UP TO SHEK MUN KAP
- CYCLE TRACK NETWORK (ABOUT 12KM LONG IN TOTAL LENGTH)

OTHERS

- COUNTRY PARK
- TUNG CHUNG TOWN CENTRE AREA (OUTLINE ZONING PLAN NO. S/I-TCTC/18)

E	FIFTH ISSUE	GL	11/15
D	FOURTH ISSUE	GL	10/15
C	THIRD ISSUE	GL	08/15
B	SECOND ISSUE	GL	06/15
Rev	Description	By	Date

Consultant

**ARUP**

Project title

**Tung Chung New Town Extension**

Drawing title

**Location of Project**

Drawing no.		Rev.	
<b>Figure 1.1</b>		<b>E</b>	
Drawn	Date	Checked	Approved
GL	11/15	LK	FC
Scale	1:30000 @A3	Status	PRELIMINARY

COPYRIGHT RESERVED

**CEDD**

土木工程拓展署  
Civil Engineering and Development Department