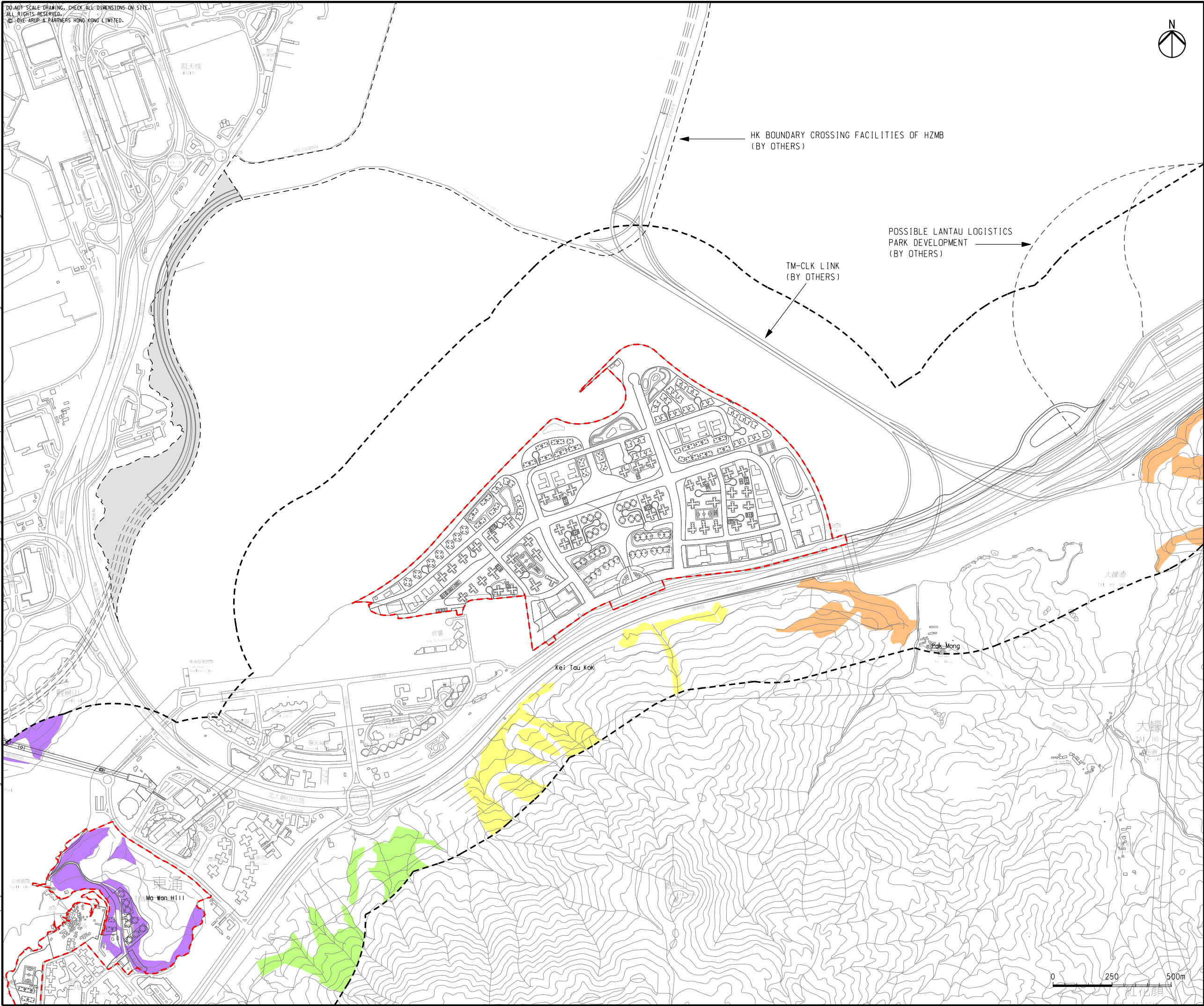


Printed by : 11/9/2015
Filename : G:\env\project\2198\4-70\13 Drawing Deliverables\24 Environmental Impact Assessment\working Figure 11.20e - Landscape Resources Plan- LR1 Enlargement Plan (Middle).dgn



DO NOT SCALE DRAWING. CHECK ALL DIMENSIONS ON SITE.
ALL RIGHTS RESERVED.
© ARUP & PARTNERS HONG KONG LIMITED.

11/9/2015
G:\env\project\2198\4-70\13 Drawing Deliverables\24 Environmental Impact Assessment\working Figure 11.20e - Landscape Resources Plan- LR1 Enlargement Plan (Middle).dgn

LEGEND

POSSIBLE DEVELOPMENT AREA

500M ASSESSMENT AREA (LIA)

LANDSCAPE RESOURCES (LR)
TOTAL AREA OF LR WITHIN THE STUDY AREA
SHOWN IN HECTARES (HA) BELOW

1a. SECONDARY WOODLAND
NEAR TAI HO WAN AND SIU HO WAN
(32.8ha)

1b. SECONDARY WOODLAND
NEAR KEI TAU KOK (13.7ha)

1c. SECONDARY WOODLAND
ALONG YU TUNG ROAD (13.9ha)

1j. SECONDARY WOODLAND
NEAR MA WAN HILL (11.1ha)

| | | | |
|-----|--------------|----|-------|
| B | SECOND ISSUE | GL | 08/15 |
| A | FIRST ISSUE | GL | 06/15 |
| Rev | Description | By | Date |

Consultant

ARUP

Project title

**Tung Chung
New Town Extension**

Drawing title

**Landscape Resources Plan
LR1 Enlargement Plan
(Middle)**

Drawing no. **Figure 11.2ae** Rev. **B**

| | | | |
|-------------------|-----------------------|---------------|----------------|
| Drawn GL | Date 08/15 | Checked LK | Approved FC |
| Scale AS SHOWN | Status PRELIMINARY | | |

COPYRIGHT RESERVED

CEDD 土木工程拓展署
Civil Engineering and
Development Department