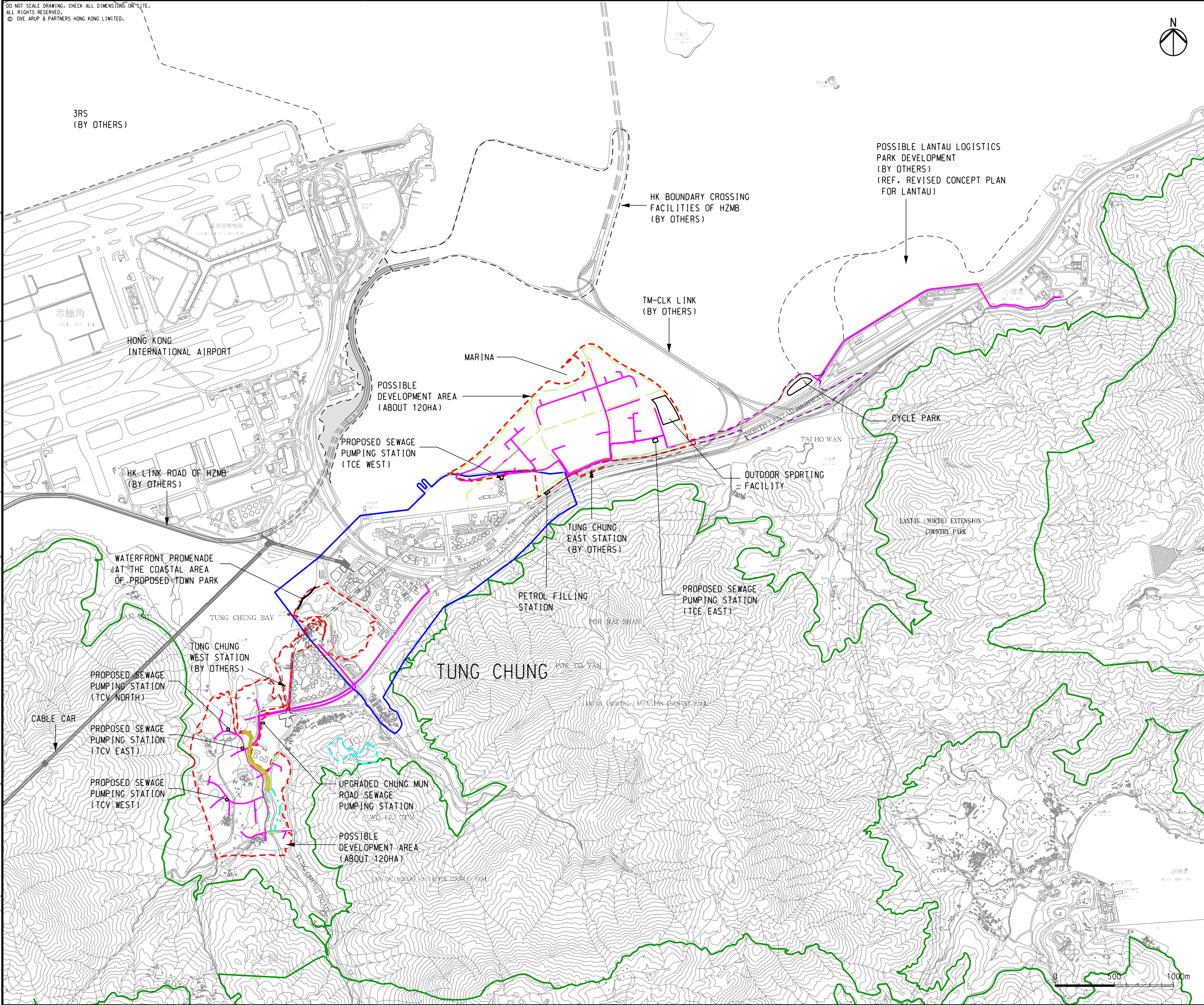


DO NOT SCALE DRAWING. CHECK ALL DIMENSIONS ON-SITE.
ALL RIGHTS RESERVED.
© OVE ARUP & PARTNERS HONG KONG LIMITED.



LEGEND

PROJECT COMPONENT

- POSSIBLE DEVELOPMENT AREA
- WORKS AREA FOR ROAD P1 (TUNG CHUNG - TAI HO SECTION)
- WORKS AREA FOR SERVICE RESERVOIR
- OTHER PROJECT ELEMENTS
- PROPOSED GRAVITY SEWER / RISING MAIN
- RE-VITALIZATION WORKS ALONG CHANNELIZED SECTION OF TUNG CHUNG STREAM (PARTLY PROPOSED AS RIVER PARK)
- PROPOSED RIVER PARK IN THE LAND ADJACENT TO THE IMMEDIATE UPSTREAM OF THE CHANNELIZED SECTION OF TUNG CHUNG STREAM UP TO SHEK MUN KAP
- CYCLE TRACK NETWORK (ABOUT 12KM LONG IN TOTAL LENGTH)
- OTHERS
- COUNTRY PARK
- TUNG CHUNG TOWN CENTRE AREA (OUTLINE ZONING PLAN NO. S/I-TCTC/18)

D	FOURTH ISSUE	GL	11/15
C	THIRD ISSUE	GL	08/15
B	SECOND ISSUE	GL	06/15
A	FIRST ISSUE	GL	04/15
Rev	Description	By	Date

Consultant

ARUP

Project title

**Tung Chung
New Town Extension**

Drawing title

**Project Location Plan
Presented in EIA Study
Brief (ESB-285/2015)**

Drawing no. **Figure 2.1c** Rev. **D**

Drawn GL	Date 11/15	Checked LK	Approved FC
Scale 1:30000 @A3	Status PRELIMINARY		

COPYRIGHT RESERVED



土木工程拓展署
Civil Engineering and
Development Department