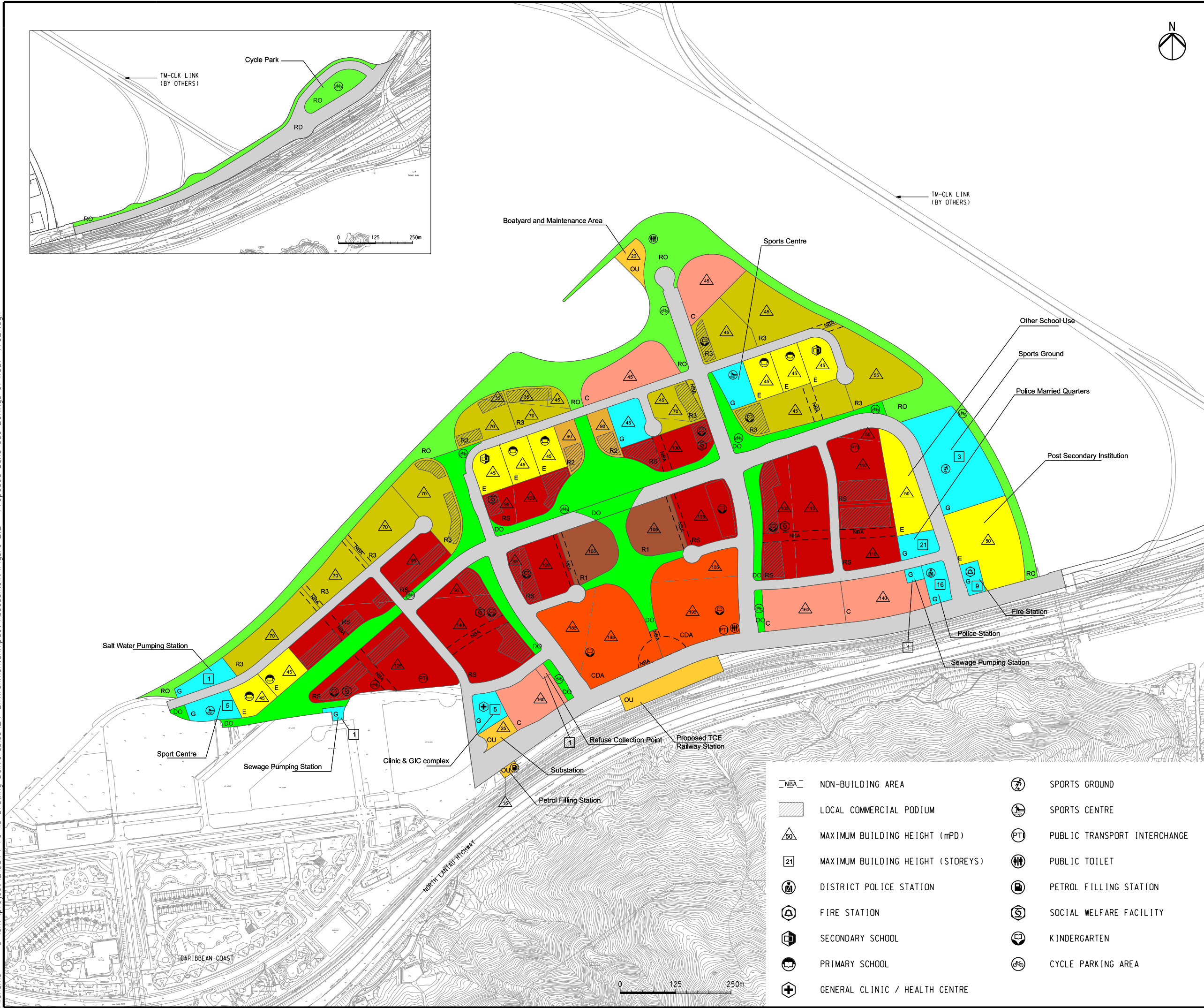


Printed by : 11/8/2015  
Filename : G:\env\project\2198\4-70\13 Drawing Deliverables\24 Environmental Impact Assessment\Figure 2.2 - Proposed Land Use Zonings of RODP (TCE).dgn



- LEGEND
- RS RESIDENTIAL SPECIAL (PR 5-6.5)
  - R1 RESIDENTIAL 1 (PR 6.5)
  - R2 RESIDENTIAL 2 (PR 5)
  - R3 RESIDENTIAL 3 (PR 2.5-3.5)
  - G GOVERNMENT
  - E EDUCATIONAL
  - OU OTHER SPECIFIED USES
  - CDA COMPREHENSIVE DEVELOPMENT AREA
  - C COMMERCIAL (PR 3-9.5)
  - DO DISTRICT OPEN SPACE
  - RO REGIONAL OPEN SPACE
  - RD PROPOSED ROAD

D	FOURTH ISSUE	GL	11/15
C	THIRD ISSUE	GL	08/15
B	SECOND ISSUE	GL	06/15
A	FIRST ISSUE	GL	03/15
Rev	Description	By	Date

Consultant

ARUP

Project title

Tung Chung  
New Town Extension

Drawing title

Revised Recommended Outline  
Development Plan - TCE

Drawing no.

Figure 2.2

Rev.

D

Drawn

GL

Date

11/15

Checked

LK

Approved

FC

Scale

A5 SHOWN

Status

PRELIMINARY

COPYRIGHT RESERVED

CEDD

土木工程拓展署  
Civil Engineering and  
Development Department

- NBA NON-BUILDING AREA
- LOCAL COMMERCIAL PODIUM
- MAXIMUM BUILDING HEIGHT (mPD)
- MAXIMUM BUILDING HEIGHT (STOREYS)
- DISTRICT POLICE STATION
- FIRE STATION
- SECONDARY SCHOOL
- PRIMARY SCHOOL
- GENERAL CLINIC / HEALTH CENTRE
- SPORTS GROUND
- SPORTS CENTRE
- PUBLIC TRANSPORT INTERCHANGE
- PUBLIC TOILET
- PETROL FILLING STATION
- SOCIAL WELFARE FACILITY
- KINDERGARTEN
- CYCLE PARKING AREA