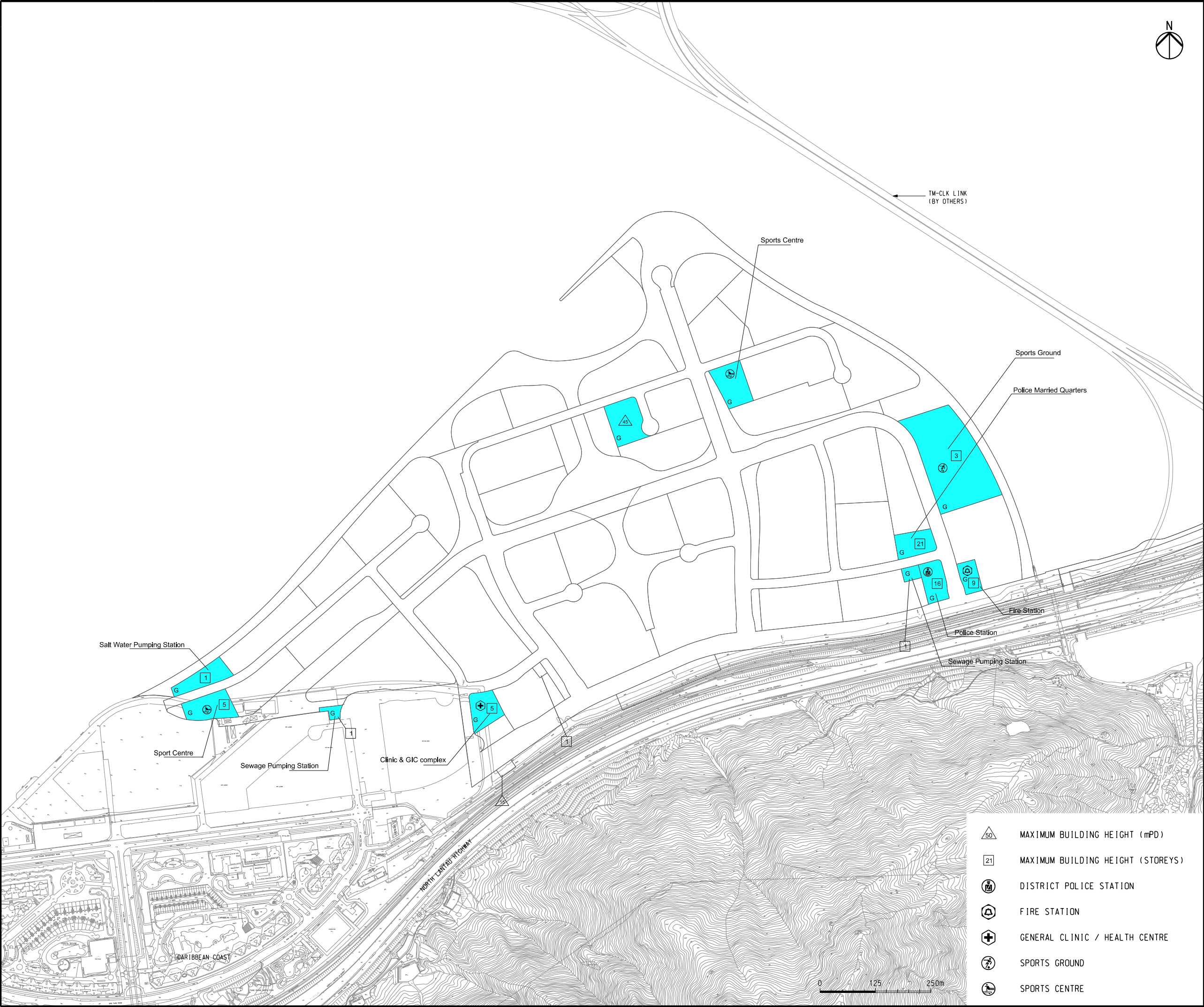


Printed by : 11/8/2015
Filename : G:\env\project\2198\4-70\13 Drawing Deliverables\24 Environmental Impact Assessment\Figure 2.9a - Locations of Government Land Use in RODP (TCE).dgn



LEGEND
G GOVERNMENT

D	FOURTH ISSUE	GL	11/15
C	THIRD ISSUE	GL	08/15
B	SECOND ISSUE	GL	06/15
A	FIRST ISSUE	GL	03/15
Rev	Description	By	Date

Consultant ARUP			
Project title Tung Chung New Town Extension			
Drawing title Locations of Government Land Use in RODP (TCE)			
Drawing no. Figure 2.9a			Rev. D
Drawn GL	Date 11/15	Checked LK	Approved FC
Scale AS SHOWN		Status PRELIMINARY	

COPYRIGHT RESERVED



土木工程拓展署
Civil Engineering and
Development Department

- 50 MAXIMUM BUILDING HEIGHT (mPD)
- 21 MAXIMUM BUILDING HEIGHT (STOREYS)
- DISTRICT POLICE STATION
- FIRE STATION
- GENERAL CLINIC / HEALTH CENTRE
- SPORTS GROUND
- SPORTS CENTRE