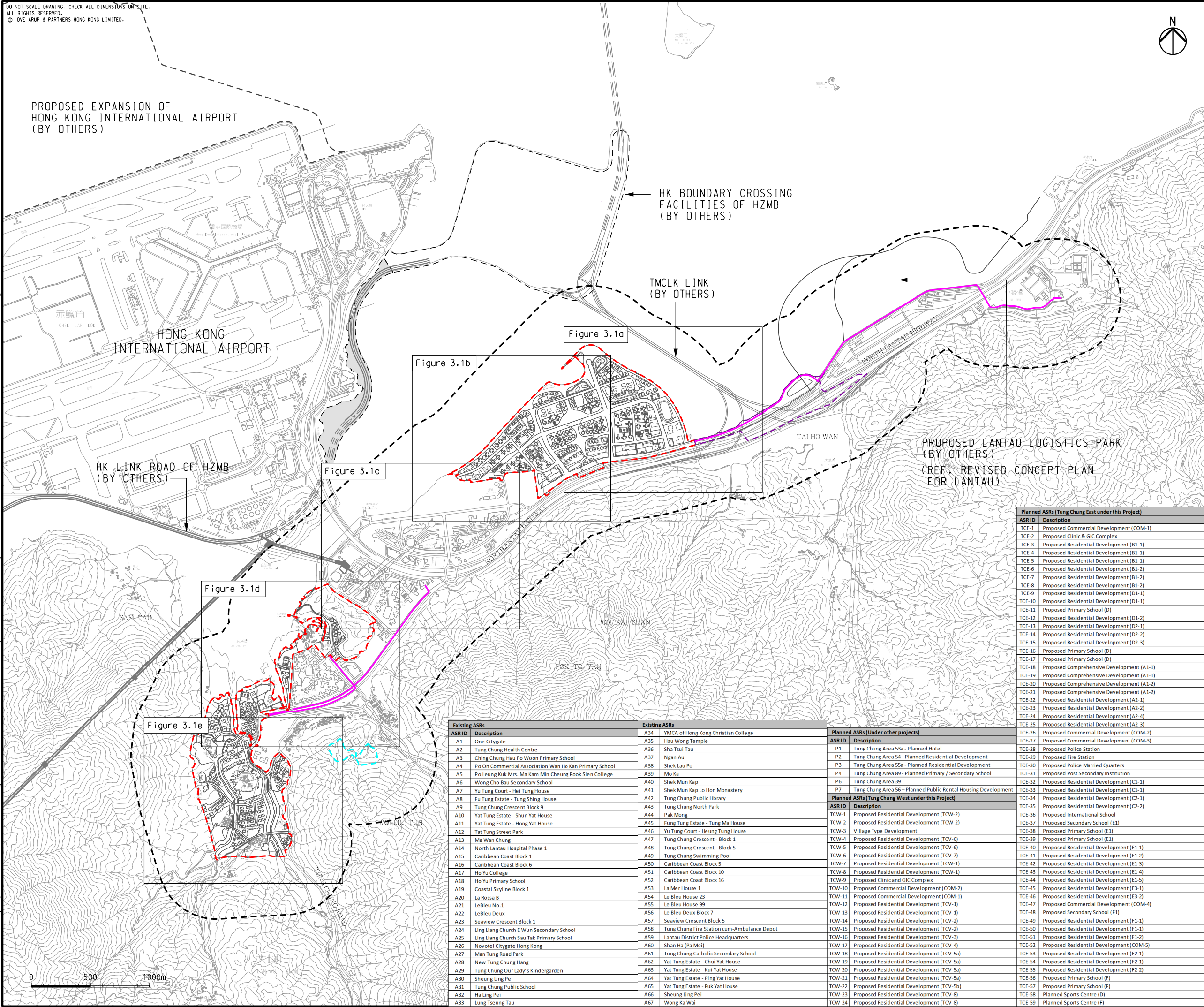


Printed by : 8/24/2015  
Filename : G:\env\project\219844-70\13 Drawing Deliverables\24 Environmental Impact Assessment\Figure 3.1 - Locations of Air Sensitive Receivers (Sheet 1 of 6).dgn



DO NOT SCALE DRAWING. CHECK ALL DIMENSIONS ON-SITE.  
ALL RIGHTS RESERVED.  
© OVE ARUP & PARTNERS HONG KONG LIMITED.

PROPOSED EXPANSION OF  
HONG KONG INTERNATIONAL AIRPORT  
(BY OTHERS)

HK LINK ROAD OF HZMB  
(BY OTHERS)

HK BOUNDARY CROSSING  
FACILITIES OF HZMB  
(BY OTHERS)

TMCLK LINK  
(BY OTHERS)

Figure 3.1a

Figure 3.1b

Figure 3.1c

Figure 3.1d

Figure 3.1e

POK KAI SILAN

POK TO YAN

TAI HO WAN

PROPOSED LANTAU LOGISTICS PARK  
(BY OTHERS)  
(REF. REVISED CONCEPT PLAN  
FOR LANTAU)

0 500 1000m

LEGEND

- POSSIBLE DEVELOPMENT AREA
- WORKS AREA FOR ROAD P1  
(TUNG CHUNG - TAI HO SECTION)
- WORKS AREA FOR SERVICE  
RESERVOIR
- PROPOSED GRAVITY SEWER /  
RISING MAIN
- 500M ASSESSMENT AREA

ASR ID	Description
TCE-1	Proposed Commercial Development (COM-1)
TCE-2	Proposed Clinic & GIC Complex
TCE-3	Proposed Residential Development (B1-1)
TCE-4	Proposed Residential Development (B1-1)
TCE-5	Proposed Residential Development (B1-1)
TCE-6	Proposed Residential Development (B1-2)
TCE-7	Proposed Residential Development (B1-2)
TCE-8	Proposed Residential Development (B1-2)
TCE-9	Proposed Residential Development (D1-1)
TCE-10	Proposed Residential Development (D1-1)
TCE-11	Proposed Primary School (D)
TCE-12	Proposed Residential Development (D1-2)
TCE-13	Proposed Residential Development (D2-1)
TCE-14	Proposed Residential Development (D2-2)
TCE-15	Proposed Residential Development (D2-3)
TCE-16	Proposed Primary School (D)
TCE-17	Proposed Primary School (D)
TCE-18	Proposed Comprehensive Development (A1-1)
TCE-19	Proposed Comprehensive Development (A1-1)
TCE-20	Proposed Comprehensive Development (A1-2)
TCE-21	Proposed Comprehensive Development (A1-2)
TCE-22	Proposed Residential Development (A2-1)
TCE-23	Proposed Residential Development (A2-2)
TCE-24	Proposed Residential Development (A2-4)
TCE-25	Proposed Residential Development (A2-3)
TCE-26	Proposed Commercial Development (COM-2)
TCE-27	Proposed Commercial Development (COM-3)
TCE-28	Proposed Police Station
TCE-29	Proposed Fire Station
TCE-30	Proposed Police Married Quarters
TCE-31	Proposed Post Secondary Institution
TCE-32	Proposed Residential Development (C1-1)
TCE-33	Proposed Residential Development (C1-1)
TCE-34	Proposed Residential Development (C2-1)
TCE-35	Proposed Residential Development (C2-2)
TCE-36	Proposed International School
TCE-37	Proposed Secondary School (E1)
TCE-38	Proposed Primary School (E1)
TCE-39	Proposed Primary School (E1)
TCE-40	Proposed Residential Development (E1-1)
TCE-41	Proposed Residential Development (E1-2)
TCE-42	Proposed Residential Development (E1-3)
TCE-43	Proposed Residential Development (E1-4)
TCE-44	Proposed Residential Development (E1-5)
TCE-45	Proposed Residential Development (E3-1)
TCE-46	Proposed Residential Development (E3-2)
TCE-47	Proposed Commercial Development (COM-4)
TCE-48	Proposed Secondary School (F1)
TCE-49	Proposed Residential Development (F1-1)
TCE-50	Proposed Residential Development (F1-1)
TCE-51	Proposed Residential Development (F1-2)
TCE-52	Proposed Residential Development (COM-5)
TCE-53	Proposed Residential Development (F2-1)
TCE-54	Proposed Residential Development (F2-1)
TCE-55	Proposed Residential Development (F2-2)
TCE-56	Proposed Primary School (F)
TCE-57	Proposed Primary School (F)
TCE-58	Planned Sports Centre (D)
TCE-59	Planned Sports Centre (F)

ASR ID	Description
A1	One Citygate
A2	Tung Chung Health Centre
A3	Ching Chung Hau Po Woon Primary School
A4	Po On Commercial Association Wan Ho Kan Primary School
A5	Po Leung Kuk Mrs. Ma Kam Min Cheung Fook Sien College
A6	Wong Cho Bau Secondary School
A7	Yu Tung Court - Hei Tung House
A8	Fu Tung Estate - Tung Shing House
A9	Tung Chung Crescent Block 9
A10	Yat Tung Estate - Shun Yat House
A11	Yat Tung Estate - Hong Yat House
A12	Tat Tung Street Park
A13	Ma Wan Chung
A14	North Lantau Hospital Phase 1
A15	Caribbean Coast Block 1
A16	Caribbean Coast Block 6
A17	Ho Yu College
A18	Ho Yu Primary School
A19	Coastal Skyline Block 1
A20	La Rossa B
A21	LeBleu No.1
A22	LeBleu Deux
A23	Seaview Crescent Block 1
A24	Ling Liang Church E Wun Secondary School
A25	Ling Liang Church Sau Tak Primary School
A26	Novotel Citygate Hong Kong
A27	Man Tung Road Park
A28	New Tung Chung Hang
A29	Tung Chung Our Lady's Kindergarden
A30	Sheung Ling Pei
A31	Tung Chung Public School
A32	Ha Ling Pei
A33	Lung Tseung Tau

ASR ID	Description
A34	YMCA of Hong Kong Christian College
A35	Hau Wong Temple
A36	Sha Tsui Tau
A37	Ngan Au
A38	Shek Lau Po
A39	Mo Ka
A40	Shek Mun Kap
A41	Shek Mun Kap Lo Hon Monastery
A42	Tung Chung Public Library
A43	Tung Chung North Park
A44	Pak Mong
A45	Fung Tung Estate - Tung Ma House
A46	Yu Tung Court - Heung Tung House
A47	Tung Chung Crescent - Block 1
A48	Tung Chung Crescent - Block 5
A49	Tung Chung Swimming Pool
A50	Caribbean Coast Block 5
A51	Caribbean Coast Block 10
A52	Caribbean Coast Block 16
A53	La Mer House 1
A54	Le Bleu House 23
A55	Le Bleu House 99
A56	Le Bleu Deux Block 7
A57	Seaview Crescent Block 5
A58	Tung Chung Fire Station cum-Ambulance Depot
A59	Lantau District Police Headquarters
A60	Shan Ha (Pa Mei)
A61	Tung Chung Catholic Secondary School
A62	Yat Tung Estate - Chui Yat House
A63	Yat Tung Estate - Kui Yat House
A64	Yat Tung Estate - Ping Yat House
A65	Yat Tung Estate - Fuk Yat House
A66	Sheung Ling Pei
A67	Wong Ka Wai

ASR ID	Description
P1	Tung Chung Area S3a - Planned Hotel
P2	Tung Chung Area S4 - Planned Residential Development
P3	Tung Chung Area S5a - Planned Residential Development
P4	Tung Chung Area S6 - Planned Primary / Secondary School
P6	Tung Chung Area 39
P7	Tung Chung Area S6 - Planned Public Rental Housing Development

ASR ID	Description
TCW-1	Proposed Residential Development (TCW-2)
TCW-2	Proposed Residential Development (TCW-2)
TCW-3	Village Type Development
TCW-4	Proposed Residential Development (TCV-6)
TCW-5	Proposed Residential Development (TCV-6)
TCW-6	Proposed Residential Development (TCV-7)
TCW-7	Proposed Residential Development (TCW-1)
TCW-8	Proposed Residential Development (TCW-1)
TCW-9	Proposed Clinic and GIC Complex
TCW-10	Proposed Commercial Development (COM-2)
TCW-11	Proposed Commercial Development (COM-1)
TCW-12	Proposed Residential Development (TCV-1)
TCW-13	Proposed Residential Development (TCV-1)
TCW-14	Proposed Residential Development (TCV-2)
TCW-15	Proposed Residential Development (TCV-2)
TCW-16	Proposed Residential Development (TCV-3)
TCW-17	Proposed Residential Development (TCV-4)
TCW-18	Proposed Residential Development (TCV-5a)
TCW-19	Proposed Residential Development (TCV-5a)
TCW-20	Proposed Residential Development (TCV-5a)
TCW-21	Proposed Residential Development (TCV-5a)
TCW-22	Proposed Residential Development (TCV-5b)
TCW-23	Proposed Residential Development (TCV-8)
TCW-24	Proposed Residential Development (TCV-8)

ASR ID	Description
TCE-1	Proposed Commercial Development (COM-1)
TCE-2	Proposed Clinic & GIC Complex
TCE-3	Proposed Residential Development (B1-1)
TCE-4	Proposed Residential Development (B1-1)
TCE-5	Proposed Residential Development (B1-1)
TCE-6	Proposed Residential Development (B1-2)
TCE-7	Proposed Residential Development (B1-2)
TCE-8	Proposed Residential Development (B1-2)
TCE-9	Proposed Residential Development (D1-1)
TCE-10	Proposed Residential Development (D1-1)
TCE-11	Proposed Primary School (D)
TCE-12	Proposed Residential Development (D1-2)
TCE-13	Proposed Residential Development (D2-1)
TCE-14	Proposed Residential Development (D2-2)
TCE-15	Proposed Residential Development (D2-3)
TCE-16	Proposed Primary School (D)
TCE-17	Proposed Primary School (D)
TCE-18	Proposed Comprehensive Development (A1-1)
TCE-19	Proposed Comprehensive Development (A1-1)
TCE-20	Proposed Comprehensive Development (A1-2)
TCE-21	Proposed Comprehensive Development (A1-2)
TCE-22	Proposed Residential Development (A2-1)
TCE-23	Proposed Residential Development (A2-2)
TCE-24	Proposed Residential Development (A2-4)
TCE-25	Proposed Residential Development (A2-3)
TCE-26	Proposed Commercial Development (COM-2)
TCE-27	Proposed Commercial Development (COM-3)
TCE-28	Proposed Police Station
TCE-29	Proposed Fire Station
TCE-30	Proposed Police Married Quarters
TCE-31	Proposed Post Secondary Institution
TCE-32	Proposed Residential Development (C1-1)
TCE-33	Proposed Residential Development (C1-1)
TCE-34	Proposed Residential Development (C2-1)
TCE-35	Proposed Residential Development (C2-2)
TCE-36	Proposed International School
TCE-37	Proposed Secondary School (E1)
TCE-38	Proposed Primary School (E1)
TCE-39	Proposed Primary School (E1)
TCE-40	Proposed Residential Development (E1-1)
TCE-41	Proposed Residential Development (E1-2)
TCE-42	Proposed Residential Development (E1-3)
TCE-43	Proposed Residential Development (E1-4)
TCE-44	Proposed Residential Development (E1-5)
TCE-45	Proposed Residential Development (E3-1)
TCE-46	Proposed Residential Development (E3-2)
TCE-47	Proposed Commercial Development (COM-4)
TCE-48	Proposed Secondary School (F1)
TCE-49	Proposed Residential Development (F1-1)
TCE-50	Proposed Residential Development (F1-1)
TCE-51	Proposed Residential Development (F1-2)
TCE-52	Proposed Residential Development (COM-5)
TCE-53	Proposed Residential Development (F2-1)
TCE-54	Proposed Residential Development (F2-1)
TCE-55	Proposed Residential Development (F2-2)
TCE-56	Proposed Primary School (F)
TCE-57	Proposed Primary School (F)
TCE-58	Planned Sports Centre (D)
TCE-59	Planned Sports Centre (F)

Rev	Description	By	Date
B	SECOND ISSUE	GL	08/15
A	FIRST ISSUE	GL	05/15

Consultant

**ARUP**

Project title

**Tung Chung  
New Town Extension**

Drawing title

**Locations of Air  
Sensitive Receivers  
(Sheet 1 of 6)**

Drawing no.

**Figure 3.1**

Rev.

**B**

Drawn	Date	Checked	Approved
GL	08/15	LK	FC
Scale	1:30000 @A3	Status	PRELIMINARY

COPYRIGHT RESERVED

**CEDD** 土木工程拓展署  
Civil Engineering and  
Development Department