

DO NOT SCALE DRAWING. CHECK ALL DIMENSIONS ON SITE.
ALL RIGHTS RESERVED.
© OVE ARUP & PARTNERS HONG KONG LIMITED.



LEGEND



POSSIBLE DEVELOPMENT AREA



WORKS AREA FOR ROAD P1
(TUNG CHUNG - TAI HO SECTION)



PROPOSED GRAVITY SEWER /
RISING MAIN



500M ASSESSMENT AREA



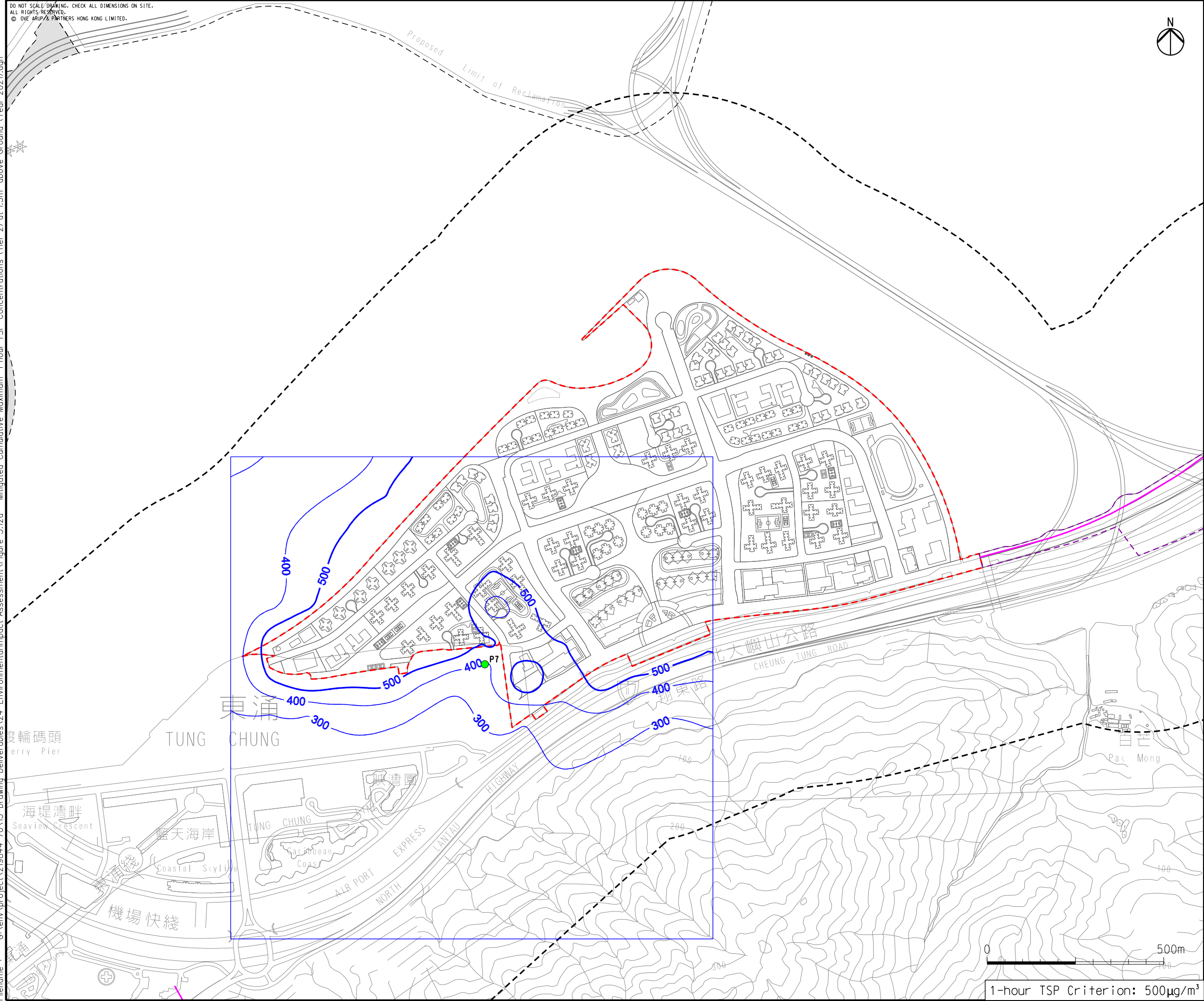
TSP CONTOUR, $\mu\text{g}/\text{m}^3$



PLANNED AIR SENSITIVE
RECEIVER

Printed by : 10/30/2015
Filename : G:\env\project\219844-70\13 Drawing Deliverables\24 Environmental Impact Assessment\Figure 3.12a - Mitigated Cumulative Maximum 1-hour TSP Concentrations (Tier 2) at 1.5m above Ground (Year 2021).dgn

Proposed
Limit of Reclamation



C	THIRD ISSUE	GL	09/15
B	SECOND ISSUE	GL	08/15
A	FIRST ISSUE	GL	06/15
Rev	Description	By	Date

Consultant

ARUP

Project title

**Tung Chung
New Town Extension**

Drawing title

**Mitigated Cumulative
Maximum 1-hour TSP
Concentrations (Tier 2)
at 1.5m above Ground
(Year 2021)**

Drawing no.

Figure 3.12a

Rev.

C

Drawn

Date

09/15

GL

LK

Scale

1:10000 @A3

Checked

FC

Approved

FC

Status

PRELIMINARY

COPYRIGHT RESERVED



土木工程拓展署
Civil Engineering and
Development Department

1-hour TSP Criterion: 500µg/m³