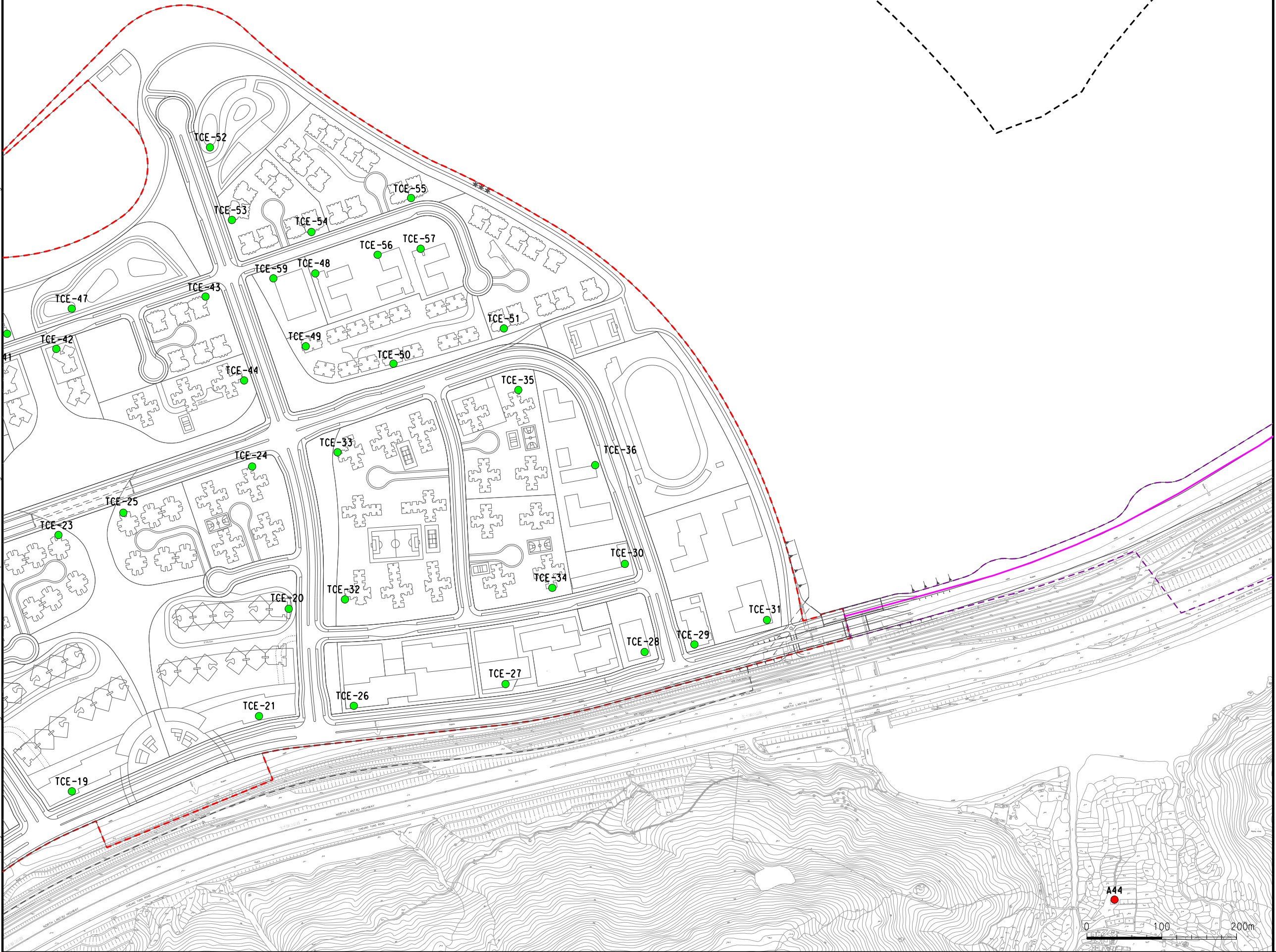


DO NOT SCALE DRAWING. CHECK ALL DIMENSIONS ON SITE.
ALL RIGHTS RESERVED.
© OVE ARUP & PARTNERS HONG KONG LIMITED.



- LEGEND
- POSSIBLE DEVELOPMENT AREA
 - WORKS AREA FOR ROAD P1
(TUNG CHUNG - TAI HO SECTION)
 - WORKS AREA FOR SERVICE
RESERVOIR
 - PROPOSED GRAVITY SEWER /
RISING MAIN
 - 500M ASSESSMENT AREA
 - EXISTING AIR SENSITIVE
RECEIVER
 - PLANNED AIR SENSITIVE
RECEIVER



B SECOND ISSUE		GL	08/15
A FIRST ISSUE		GL	05/15
Rev	Description	By	Date
Consultant			
ARUP			
Project title			
Tung Chung New Town Extension			
Drawing title			
Location of Air Sensitive Receivers (Sheet 2 of 6)			
Drawing no.		Rev.	
Figure 3.1a		B	
Drawn	Date	Checked	Approved
GL	08/15	LK	FC
Scale	Status		
1:5000 @A3	PRELIMINARY		

COPYRIGHT RESERVED



土木工程拓展署
Civil Engineering and
Development Department