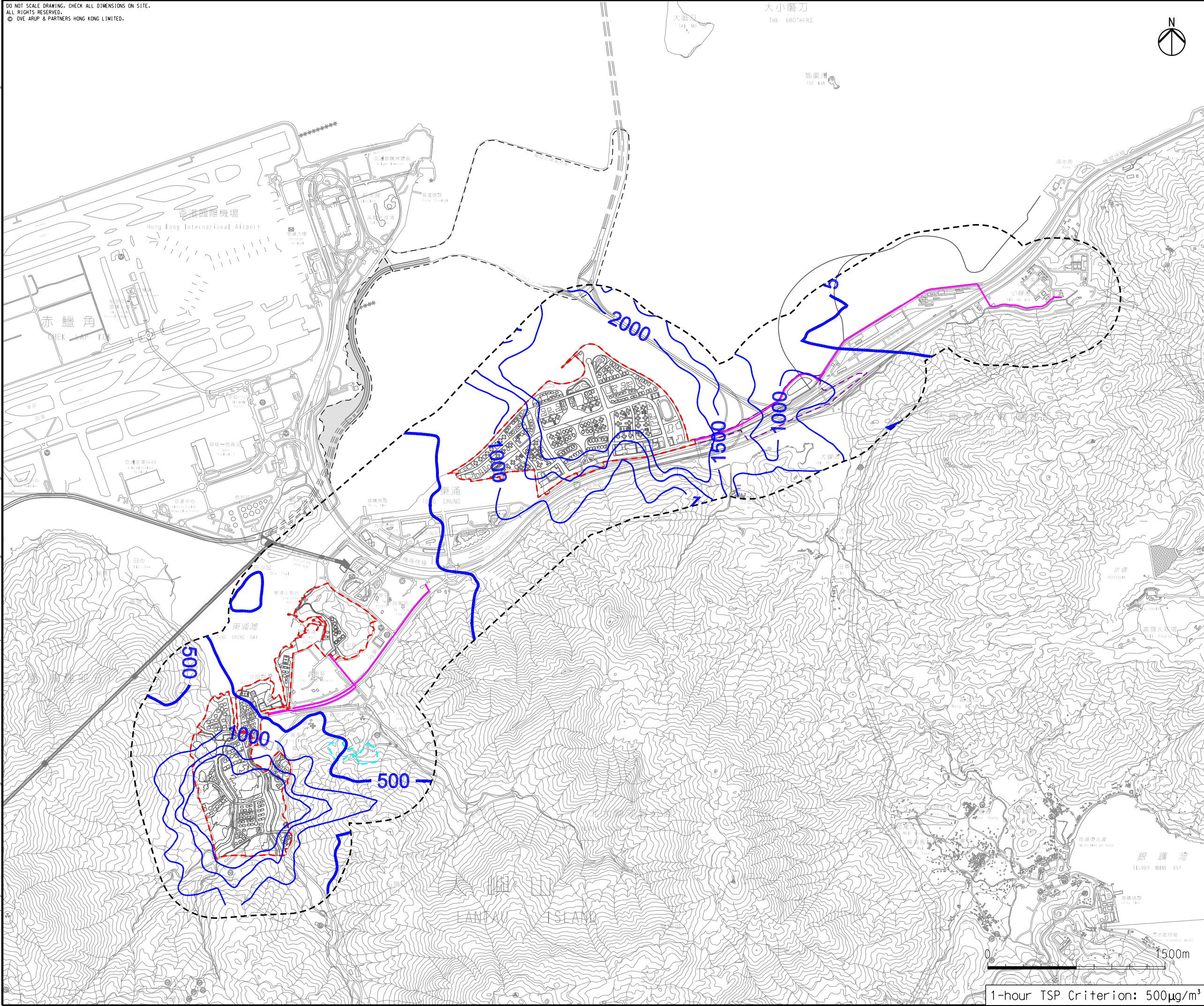


Printed by : 10/30/2015
Filename : G:\env\project\2198\4-70\13 Drawing Deliverables\24 Environmental Impact Assessment\Figure 3.7a - Unmitigated Cumulative Maximum 1-hour TSP Concentrations at 1.5m above Ground (Year 2027).dgn

DO NOT SCALE DRAWING. CHECK ALL DIMENSIONS ON SITE.
ALL RIGHTS RESERVED.
© OVE ARUP & PARTNERS HONG KONG LIMITED.



LEGEND

- POSSIBLE DEVELOPMENT AREA
- WORKS AREA FOR ROAD P1 (TUNG CHUNG - TAI HO SECTION)
- WORKS AREA FOR SERVICE RESERVOIR
- PROPOSED GRAVITY SEWER / RISING MAIN
- 500M ASSESSMENT AREA
- TSP CONTOUR, $\mu\text{g}/\text{m}^3$

C	THIRD ISSUE	GL	09/15
B	SECOND ISSUE	GL	08/15
A	FIRST ISSUE	GL	05/15
Rev	Description	By	Date

Consultant

ARUP

Project title

**Tung Chung
New Town Extension**

Drawing title

**Unmitigated Cumulative
Maximum 1-hour
TSP Concentrations
at 1.5m above Ground
(Year 2027)**

Drawing no.

Figure 3.7a

Rev.

C

Drawn	Date	Checked	Approved
GL	09/15	LK	FC
Scale	1:30000 @A3	Status	PRELIMINARY

COPYRIGHT RESERVED

土木工程拓展署
Civil Engineering and
Development Department