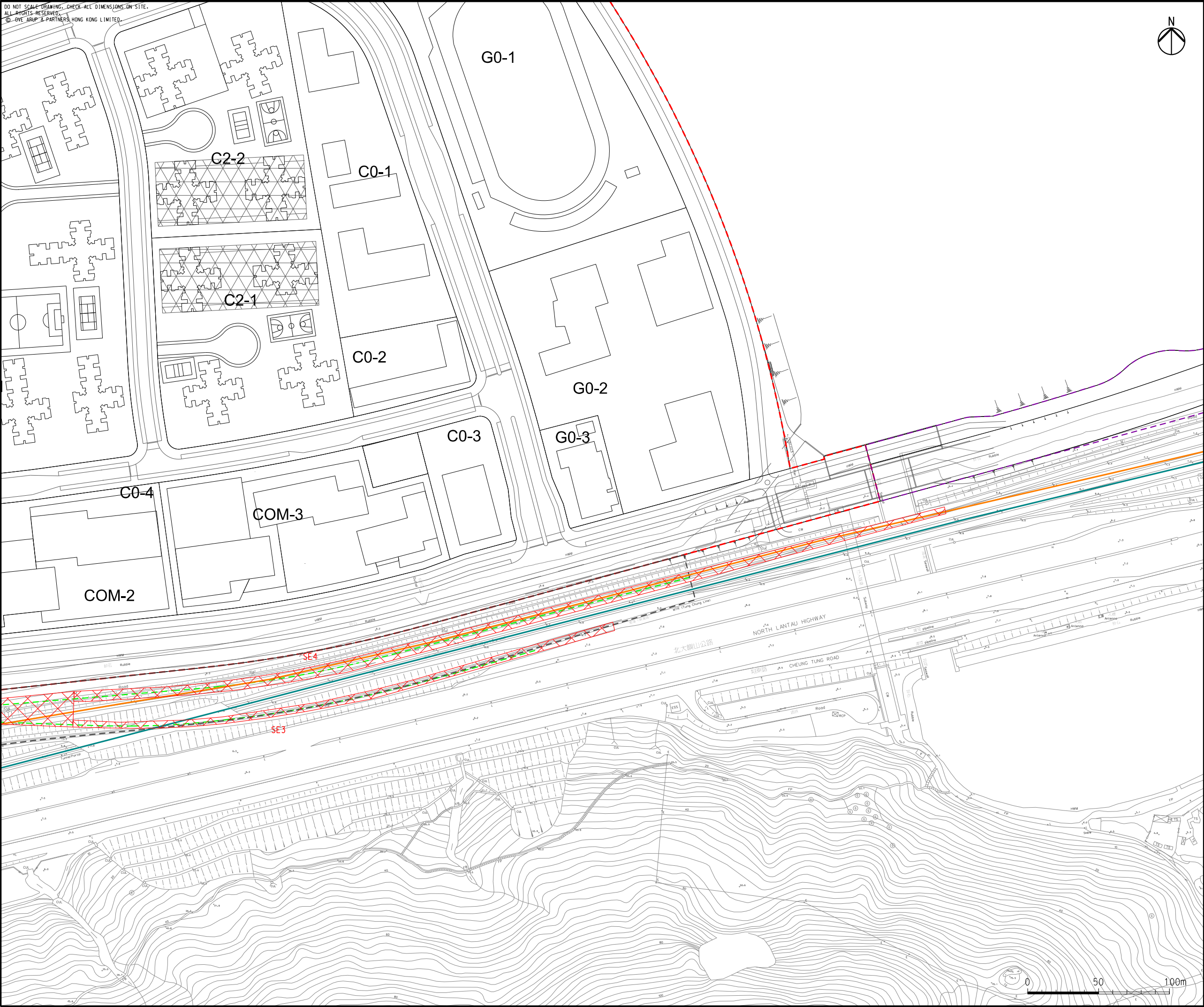


Printed by : 11/8/2015
Filename : G:\env\project\21984-4-70\13 Drawing Deliverables\24 Environmental Impact Assessment\Figure 4.15b-3 - Mitigation Measures for Railway Airborne Noise after 2026.dgn



DO NOT SCALE DRAWING. CHECK ALL DIMENSIONS ON SITE.
ALL RIGHTS RESERVED.
© BYE ARUP & PARTNERS, HONG KONG LIMITED.

LEGEND

- POSSIBLE DEVELOPMENT AREA
- WORKS AREA FOR ROAD P1 (TUNG CHUNG - TAI HO SECTION)
- AIRPORT EXPRESS LINE
- TUNG CHUNG LINE
- PROPOSED ALIGNMENT FOR TUNG CHUNG EAST STATION
- PROPOSED SEMI-ENCLOSURE (TENTATIVE SEMI-ENCLOSURE TO BE REVIEWED BY RAIL OPERATOR DURING THEIR SCHEDULE 2 EIA)

D	FOURTH ISSUE	GL	09/15
C	THIRD ISSUE	GL	08/15
B	SECOND ISSUE	GL	07/15
A	FIRST ISSUE	GL	04/15
Rev	Description	By	Date

Consultant

ARUP

Project title

**Tung Chung
New Town Extension**

Drawing title

**Mitigation Measures for
Railway Airborne Noise
after 2026
(Sheet 4 of 4)**

Drawing no. **Figure 4.15b-3** Rev. **D**

Drawn GL	Date 09/15	Checked LK	Approved FC
Scale 1:2500 @A3	Status PRELIMINARY		

COPYRIGHT RESERVED

CEDD

土木工程拓展署
Civil Engineering and
Development Department