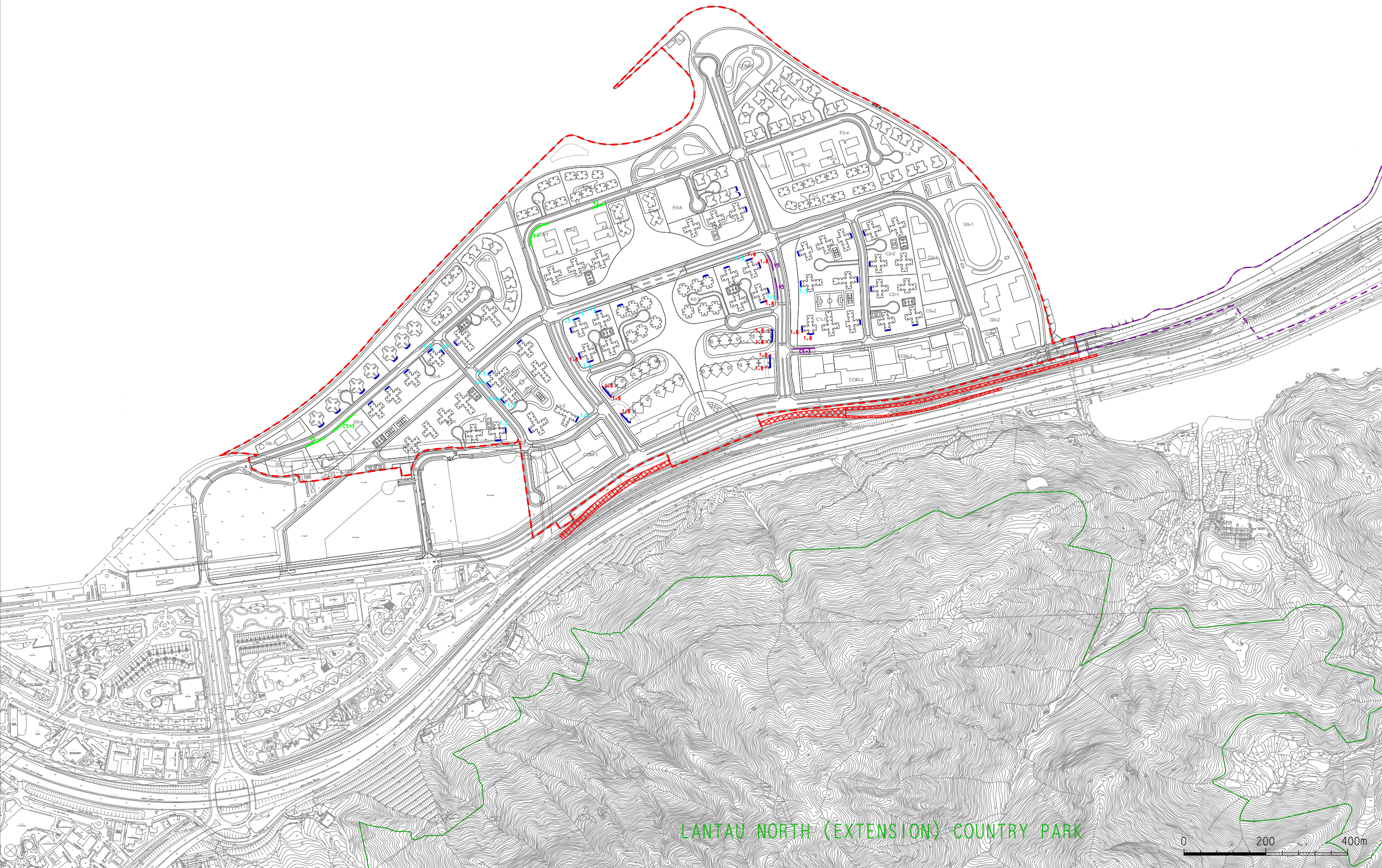


DO NOT SCALE DRAWING. CHECK ALL DIMENSIONS ON SITE.
ALL RIGHTS RESERVED.
© OVE ARUP & PARTNERS HONG KONG LIMITED.



LEGEND

- POSSIBLE DEVELOPMENT AREA
- WORKS AREA FOR ROAD P1
(TUNG CHUNG - TAI HO SECTION)
- COUNTRY PARK
- FACADE WITH NO OPENABLE
WINDOWS
- SCHOOL BOUNDARY WALL (aM HIGH)
- VERTICAL NOISE BARRIER
(aM HIGH)
- CANTILEVER NOISE BARRIER
(gM HIGH + hM CANTILEVER)
- ARCHITECTURAL FIN (1.5M LONG)
- ARCHITECTURAL FIN (1.8M LONG)
- PROPOSED SEMI-ENCLOSURE
(TENTATIVE SEMI-ENCLOSURE TO
BE REVIEWED BY RAIL OPERATOR
DURING THEIR SCHEDULE 2 EIA)



A		FIRST ISSUE	
Rev	Description	By	Date

Consultant

ARUP

Project title

**Tung Chung
New Town Extension**

Drawing title

**Overall Mitigation Measures
for Road Traffic Noise
and Railway Noise
(Sheet 2 of 3)**

Drawing no. **Figure 4.16a** Rev. **A**

Drawn GL	Date 09/15	Checked LK	Approved FC
Scale 1:10000 @A3		Status PRELIMINARY	

COPYRIGHT RESERVED



土木工程拓展署
Civil Engineering and
Development Department