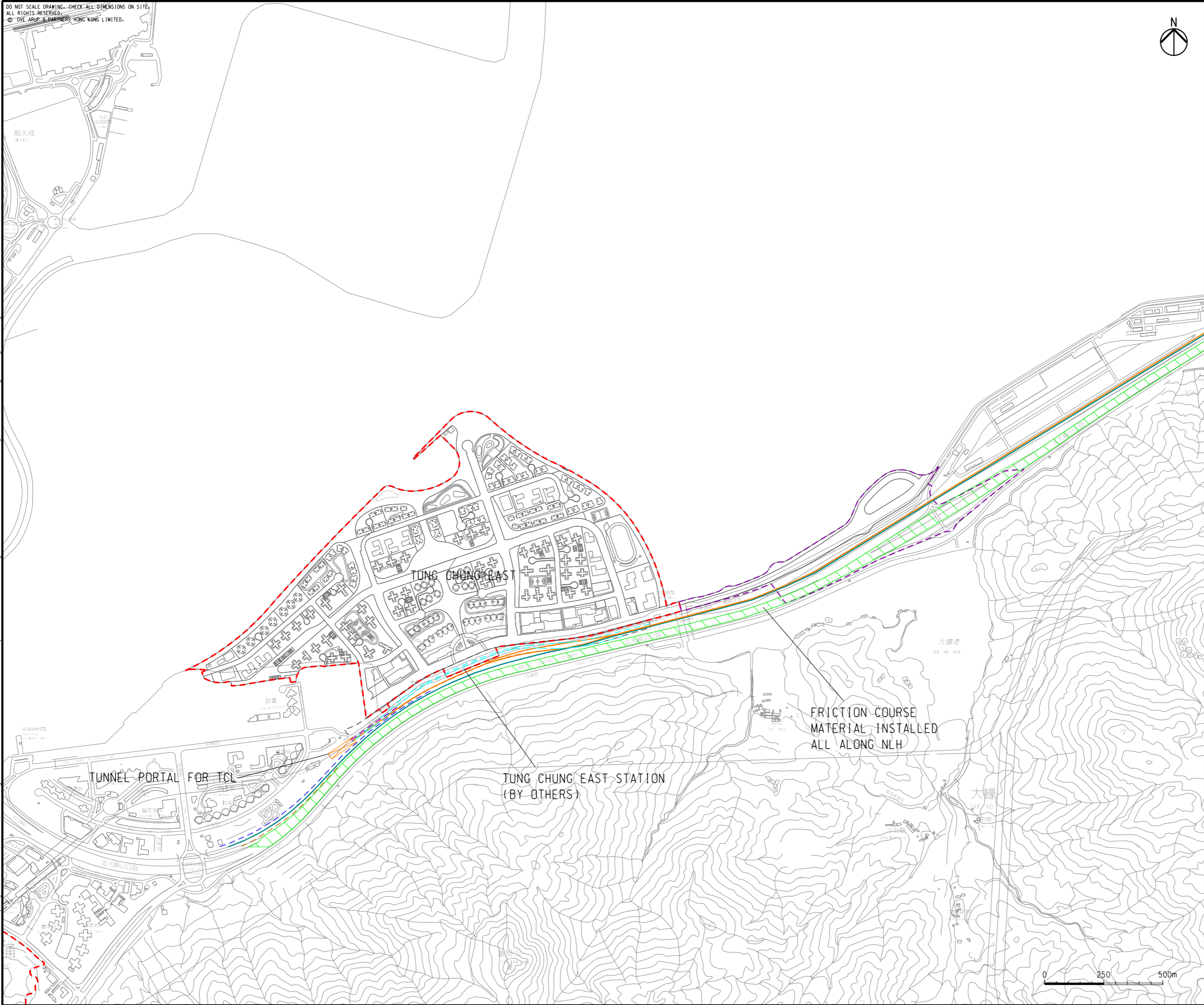


Printed by : 11/8/2015
Filename : G:\env\project\2198\4-70\13 Drawing Deliverables\24 Environmental Impact Assessment\Figure 4.2 - Road and Rail Layout near Tung Chung East.dgn



DO NOT SCALE DRAWING. CHECK ALL DIMENSIONS ON SITE.
ALL RIGHTS RESERVED.
© OVE ARUP & PARTNERS HONG KONG LIMITED.



- LEGEND
- POSSIBLE DEVELOPMENT AREA
 - WORKS AREA FOR ROAD P1 (TUNG CHUNG - TAI HO SECTION)
 - OTHER PROJECT ELEMENTS
 - NORTH LANTAU HIGHWAY (NLH)
 - AIRPORT EXPRESS LINE (AEL)
 - TUNG CHUNG LINE (TCL)
 - PROPOSED ALIGNMENT FOR TUNG CHUNG EAST STATION
 - NLH 3M NOISE BARRIER
 - AEL SEMI-ENCLOSURE
 - AREA 56 TCL CANTILEVERED NOISE BARRIER

| | | | |
|-----|--------------|----|-------|
| C | THIRD ISSUE | GL | 08/15 |
| B | SECOND ISSUE | GL | 07/15 |
| A | FIRST ISSUE | GL | 04/15 |
| Rev | Description | By | Date |

Consultant

ARUP

Project title

Tung Chung
New Town Extension

Drawing title

Road and Rail Layout
near Tung Chung East

Drawing no. Figure 4.2 Rev. C

| | | | |
|-------------------|-----------------------|---------------|----------------|
| Drawn GL | Date 08/15 | Checked LK | Approved FC |
| Scale AS SHOWN | Status PRELIMINARY | | |

COPYRIGHT RESERVED



土木工程拓展署
Civil Engineering and
Development Department