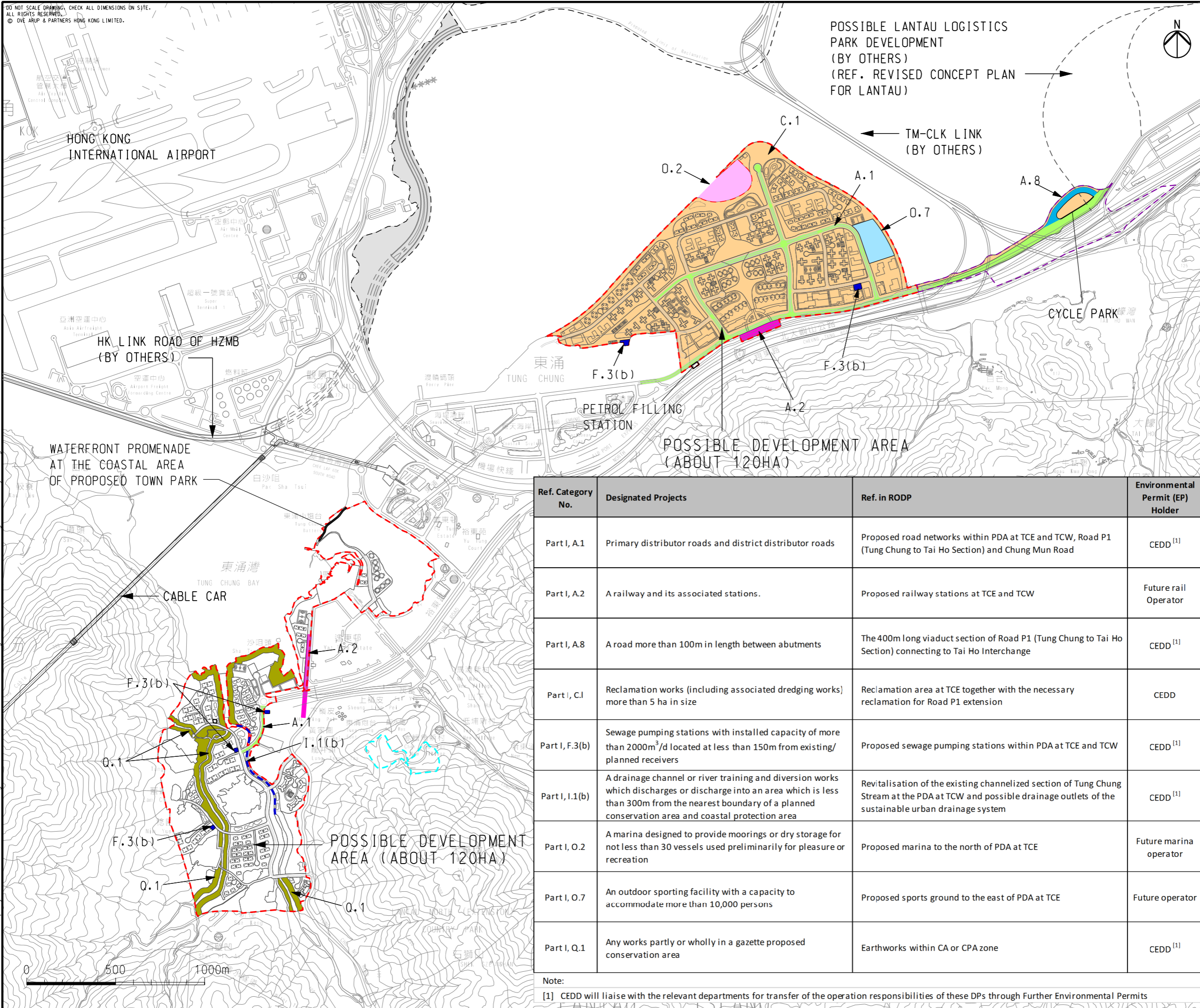


DO NOT SCALE DRAWING. CHECK ALL DIMENSIONS ON SITE.
ALL RIGHTS RESERVED.
© OVE ARUP & PARTNERS HONG KONG LIMITED.



LEGEND

- POSSIBLE DEVELOPMENT AREA
- WORKS AREA FOR ROAD P1 (TUNG CHUNG - TAI HO SECTION)
- WORKS AREA FOR SERVICE RESERVOIR
- OTHER PROJECT ELEMENTS

Ref. Category No.	Designated Projects	Ref. in RODP	Environmental Permit (EP) Holder
Part I, A.1	Primary distributor roads and district distributor roads	Proposed road networks within PDA at TCE and TCW, Road P1 (Tung Chung to Tai Ho Section) and Chung Mun Road	CEDD ^[1]
Part I, A.2	A railway and its associated stations.	Proposed railway stations at TCE and TCW	Future rail Operator
Part I, A.8	A road more than 100m in length between abutments	The 400m long viaduct section of Road P1 (Tung Chung to Tai Ho Section) connecting to Tai Ho Interchange	CEDD ^[1]
Part I, C.1	Reclamation works (including associated dredging works) more than 5 ha in size	Reclamation area at TCE together with the necessary reclamation for Road P1 extension	CEDD
Part I, F.3(b)	Sewage pumping stations with installed capacity of more than 2000m ³ /d located at less than 150m from existing/ planned receivers	Proposed sewage pumping stations within PDA at TCE and TCW	CEDD ^[1]
Part I, I.1(b)	A drainage channel or river training and diversion works which discharges or discharge into an area which is less than 300m from the nearest boundary of a planned conservation area and coastal protection area	Revitalisation of the existing channelized section of Tung Chung Stream at the PDA at TCW and possible drainage outlets of the sustainable urban drainage system	CEDD ^[1]
Part I, O.2	A marina designed to provide moorings or dry storage for not less than 30 vessels used preliminarily for pleasure or recreation	Proposed marina to the north of PDA at TCE	Future marina operator
Part I, O.7	An outdoor sporting facility with a capacity to accommodate more than 10,000 persons	Proposed sports ground to the east of PDA at TCE	Future operator
Part I, Q.1	Any works partly or wholly in a gazette proposed conservation area	Earthworks within CA or CPA zone	CEDD ^[1]

Note:
[1] CEDD will liaise with the relevant departments for transfer of the operation responsibilities of these DPs through Further Environmental Permits

E	FIFTH ISSUE	GL	11/15
D	FOURTH ISSUE	GL	09/15
C	THIRD ISSUE	GL	08/15
B	SECOND ISSUE	GL	06/15
Rev	Description	By	Date

Consultant
ARUP

Project title
Tung Chung New Town Extension

Drawing title
Locations of Designated Projects

Drawing no. **Figure 2.1** Rev. **E**

Drawn	Date	Checked	Approved
GL	11/15	LK	FC
Scale	1:20000 @A3		Status
			PRELIMINARY

COPYRIGHT RESERVED

CEDD 土木工程拓展署
Civil Engineering and Development Department

Printed by : 11/26/2015
Filename : G:\env\project\219844-70\13 Drawing Deliverables\33 EIM&A Manual\Figure 2.1 - Locations of Designated Projects.dgn