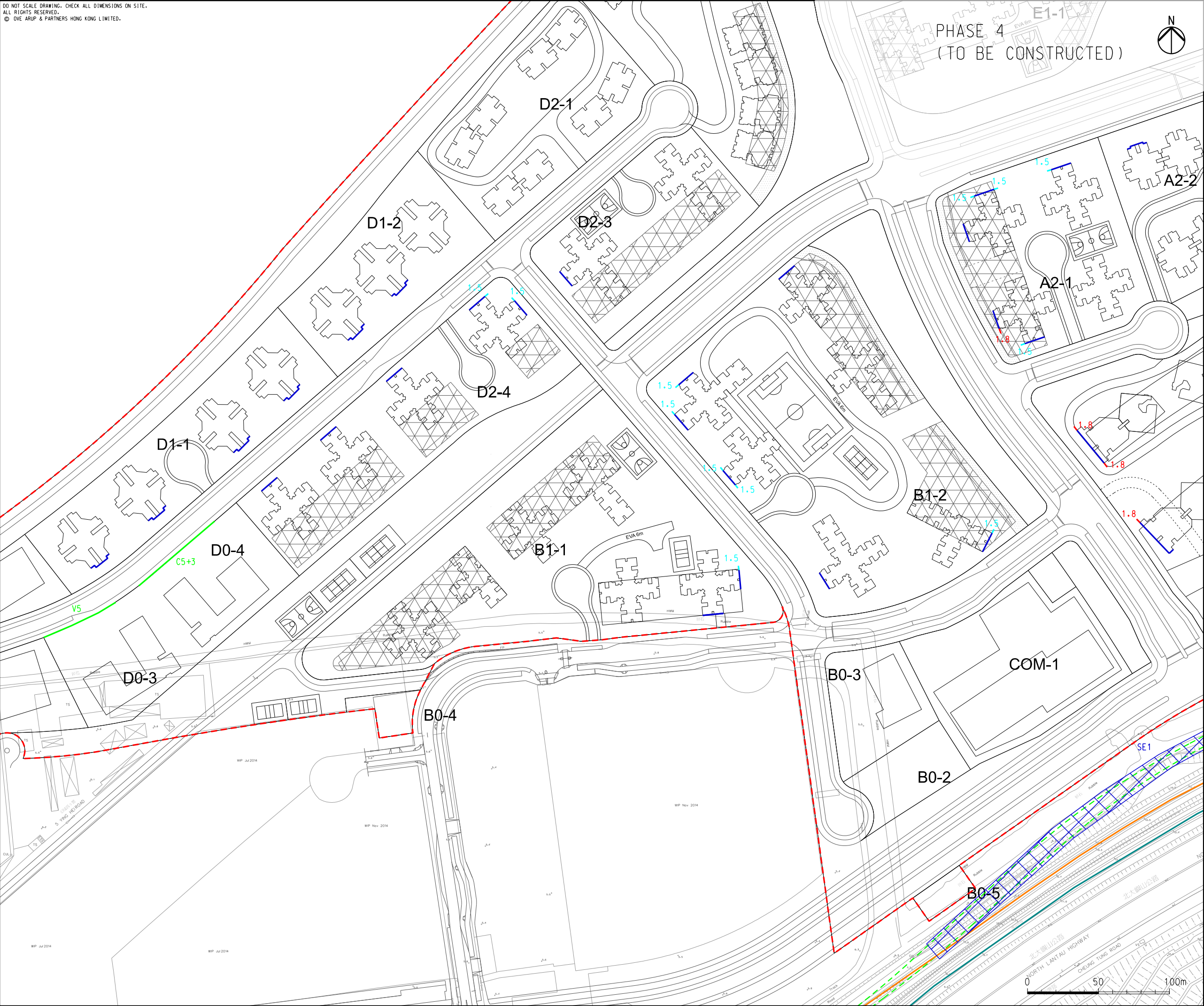


DO NOT SCALE DRAWING. CHECK ALL DIMENSIONS ON SITE.
ALL RIGHTS RESERVED.
© OVE ARUP & PARTNERS HONG KONG LIMITED.



LEGEND

- POSSIBLE DEVELOPMENT AREA
- AIRPORT EXPRESS LINE
- TUNG CHUNG LINE
- PROPOSED ALIGNMENT FOR TUNG CHUNG EAST STATION
- FACADE WITH NO OPENABLE WINDOWS
- SCHOOL BOUNDARY WALL (cm HIGH)
- SCHOOL BOUNDARY WALL (bm HIGH + cm CANTILEVER)
- ARCHITECTURAL FIN (1.5M LONG)
- ARCHITECTURAL FIN (1.8M LONG)
- PROPOSED SEMI-ENCLOSURE (TENTATIVE SEMI-ENCLOSURE TO BE REVIEWED BY RAIL OPERATOR DURING THEIR SCHEDULE 2 EIA)

C	THIRD ISSUE	GL	09/15
B	SECOND ISSUE	GL	07/15
A	FIRST ISSUE	GL	04/15
Rev	Description	By	Date

Consultant

ARUP

Project title

Tung Chung New Town Extension

Drawing title

Mitigation Measures for Road Traffic Noise and Railway Noise at 2027 (Sheet 4 of 5)

Drawing no.

Figure 6.3c

Rev.

C

Drawn	Date	Checked	Approved
GL	09/15	LK	FC
Scale	1:2500 @A3	Status	PRELIMINARY

COPYRIGHT RESERVED

CEDD

土木工程拓展署
Civil Engineering and Development Department