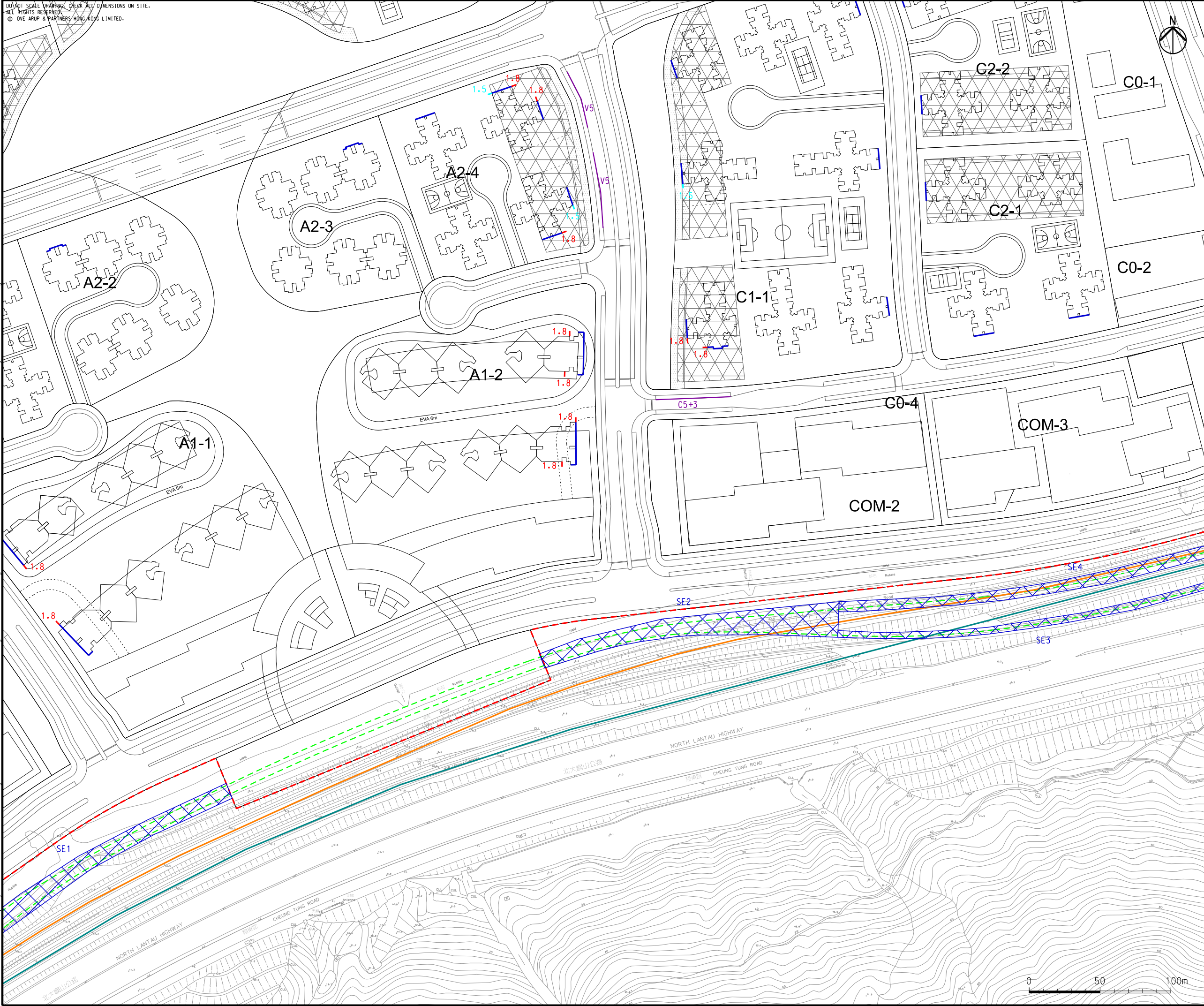


Printed by : 10/2/2015
Filename : G:\env\project\2198\4-70\13 Drawing Deliverables\33 EM&A Manual\Figure 6.4b - Mitigation Measures for Road Traffic Noise and Railway Noise at 2045.dgn

DO NOT SCALE DRAWING. CHECK ALL DIMENSIONS ON SITE.
ALL RIGHTS RESERVED.
© OVE ARUP & PARTNERS HONG KONG LIMITED.



- LEGEND
- POSSIBLE DEVELOPMENT AREA
 - WORKS AREA FOR ROAD P1 (TUNG CHUNG - TAI HO SECTION)
 - AIRPORT EXPRESS LINE
 - TUNG CHUNG LINE
 - PROPOSED ALIGNMENT FOR TUNG CHUNG EAST STATION
 - FACADE WITH NO OPENABLE WINDOWS
 - VERTICAL NOISE BARRIER (gM HIGH)
 - CANTILEVER NOISE BARRIER (gM HIGH + hM CANTILEVER)
 - ARCHITECTURAL FIN (1.5M LONG)
 - ARCHITECTURAL FIN (1.8M LONG)
 - PROPOSED SEMI-ENCLOSURE (TENTATIVE SEMI-ENCLOSURE TO BE REVIEWED BY RAIL OPERATOR DURING THEIR SCHEDULE 2 EIA)

C	THIRD ISSUE	GL	09/15
B	SECOND ISSUE	GL	07/15
A	FIRST ISSUE	GL	04/15
Rev	Description	By	Date

Consultant

ARUP

Project title

**Tung Chung
New Town Extension**

Drawing title

**Mitigation Measures for
Road Traffic Noise and
Railway Noise at 2045
(Sheet 3 of 6)**

Drawing no.			Figure 6.4b		Rev.		C	
Drawn		Date		Checked		Approved		
GL		09/15		LK		FC		
Scale				Status				
1:2500 @A3				PRELIMINARY				

COPYRIGHT RESERVED

CEDD 土木工程拓展署
Civil Engineering and
Development Department