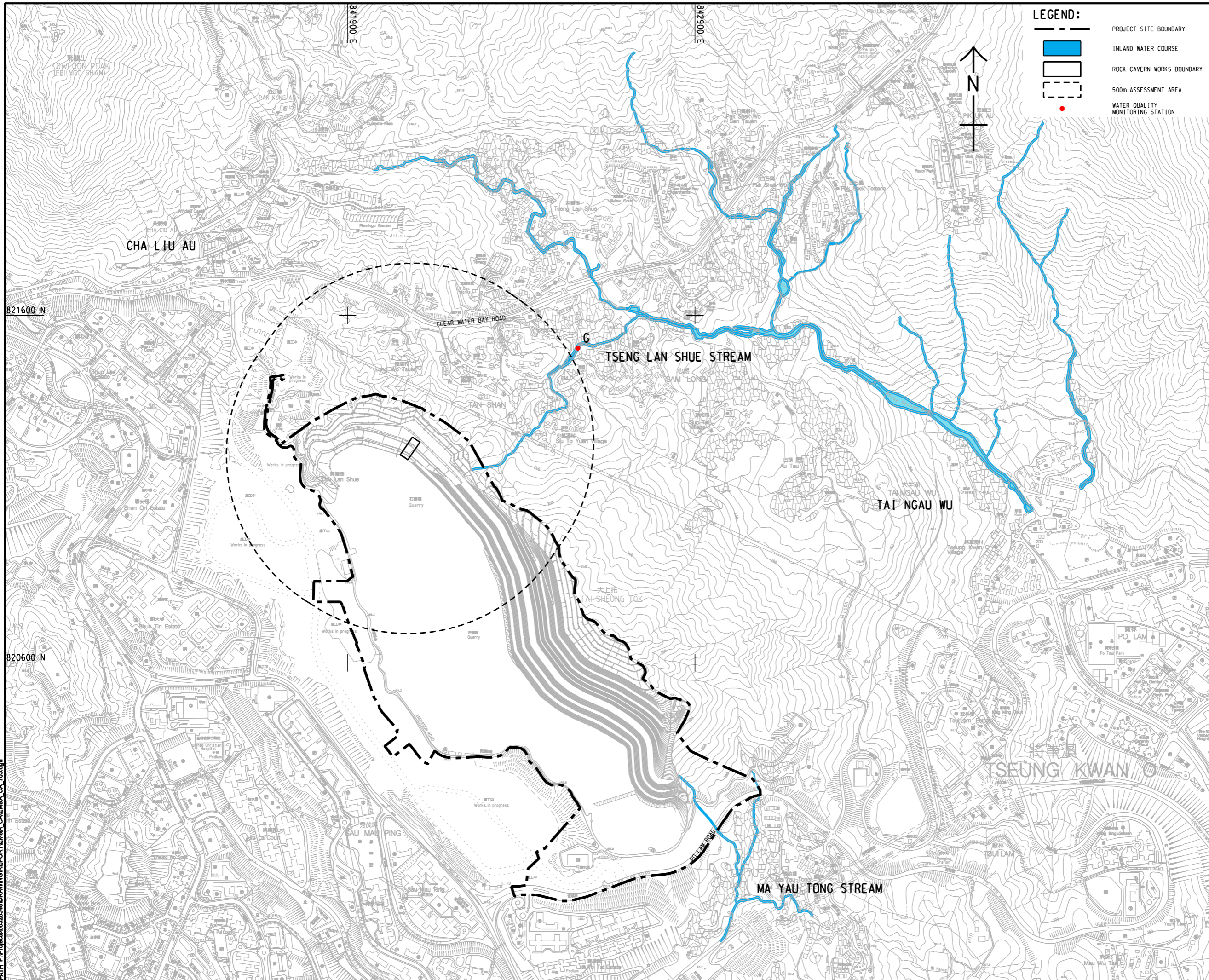


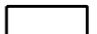
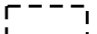



ISO A1 594mm x 841mm
 Approved:
 Checked:
 Designer:
 Project Management Initials:
 Pld File by: ZHONGDY_20150931
 PATH: P:\Projects\60328348\DRAWING\REPORT\EM&A_CALEM&A_CA_703.dgn



-  PROJECT SITE BOUNDARY
-  INLAND WATER COURSE
-  ROCK CAVERN WORKS BOUNDARY
-  500m ASSESSMENT AREA
-  WATER QUALITY MONITORING STATION



PROJECT
 項目
DEVELOPMENT OF ANDERSON ROAD QUARRY SITE - INVESTIGATION, DESIGN AND CONSTRUCTION

CLIENT
 業主
 土木工程拓展署
 Civil Engineering and Development Department

CONSULTANT
 顧問公司
 AECOM Asia Company Ltd.
 www.aecom.com

SUB-CONSULTANTS
 分項工程顧問公司

ISSUE/REVISION
 修訂

IR/ 修訂	DATE/ 日期	DESCRIPTION/ 內容摘要	CHK/ 核對

STATUS
 階段

SCALE
 比例
 A1 1 : 5000

DIMENSION UNIT
 尺寸單位
 METRES

KEY PLAN
 索引圖

PROJECT NO.
 項目編號
 60328348

CONTRACT NO.
 合約編號
 CE 10/2014 (CE)

SHEET TITLE
 圖紙名稱
 LOCATIONS OF WATER QUALITY MONITORING STATION

SHEET NUMBER
 圖紙編號
 60328348/EM&A_CA/FIGURE 4.1

This drawing has been prepared for the use of AECOM's client. It may not be used, modified, reproduced or relied upon by third parties, except as required by law. AECOM accepts no responsibility, and denies any liability whatsoever, for any party that uses or relies on this drawing without AECOM's express written consent. Do not scale this document. All measurements must be obtained from the related dimensions.