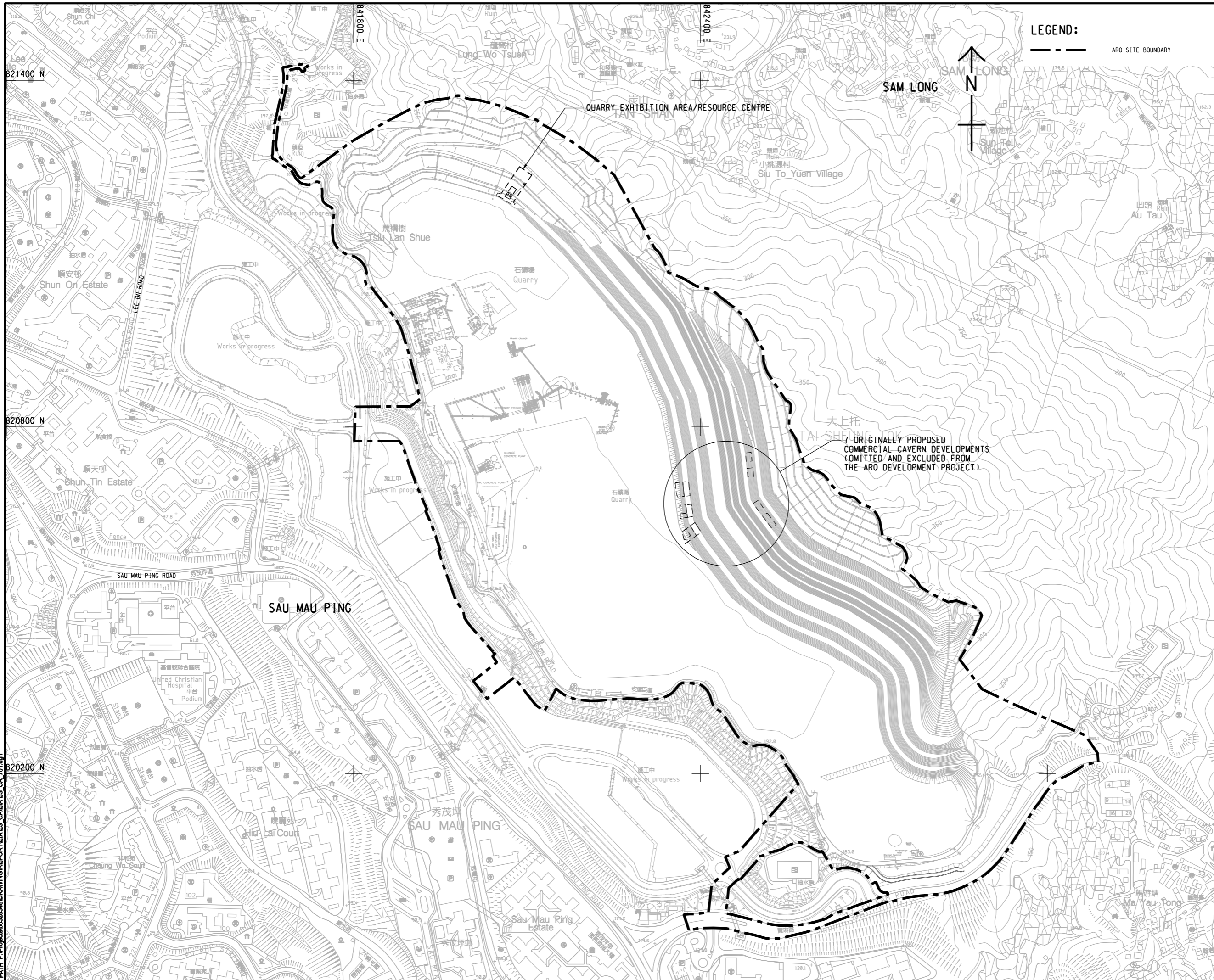


ISO A1 594mm x 841mm  
 Approved:  
 Checked:  
 Designer:  
 Project Management Initials:  
 20150623  
 PATH P:\projects\60328348\DRAWING\REPORT\EIA ES CA 701.dgn



**LEGEND:**

--- ARO SITE BOUNDARY

**AECOM**

**PROJECT**  
 DEVELOPMENT OF  
 ANDERSON ROAD  
 QUARRY SITE -  
 INVESTIGATION, DESIGN  
 AND CONSTRUCTION

**CLIENT**  
 土木工程拓展署  
 Civil Engineering and  
 Development Department

**CONSULTANT**  
 AECOM Asia Company Ltd.  
 www.aecom.com

**SUB-CONSULTANTS**  
 分判工程顧問公司

**ISSUE/REVISION**

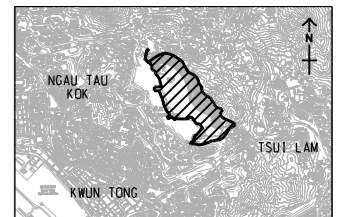
| IR | DATE | DESCRIPTION | CHK |
|----|------|-------------|-----|
|    |      |             |     |
|    |      |             |     |
|    |      |             |     |
|    |      |             |     |

**STATUS**

**SCALE**      **DIMENSION UNIT**

A1 1:3000      METRES

**KEY PLAN**    A1 1:80000



**PROJECT NO.**      **CONTRACT NO.**  
 60328348      CE 10/2014 (CE)

**SHEET TITLE**  
 SITE LOCATION PLAN

**SHEET NUMBER**  
 60328348/EIA ES\_CA/FIGURE 2.1

This drawing has been prepared for the use of AECOM's client. It may not be used, modified, reproduced or relied upon by third parties, except as required by law. AECOM accepts no responsibility, and denies any liability whatsoever, to any party that uses or relies on this drawing without AECOM's express written consent. Do not scale this document. All measurements must be obtained from the stated dimensions.