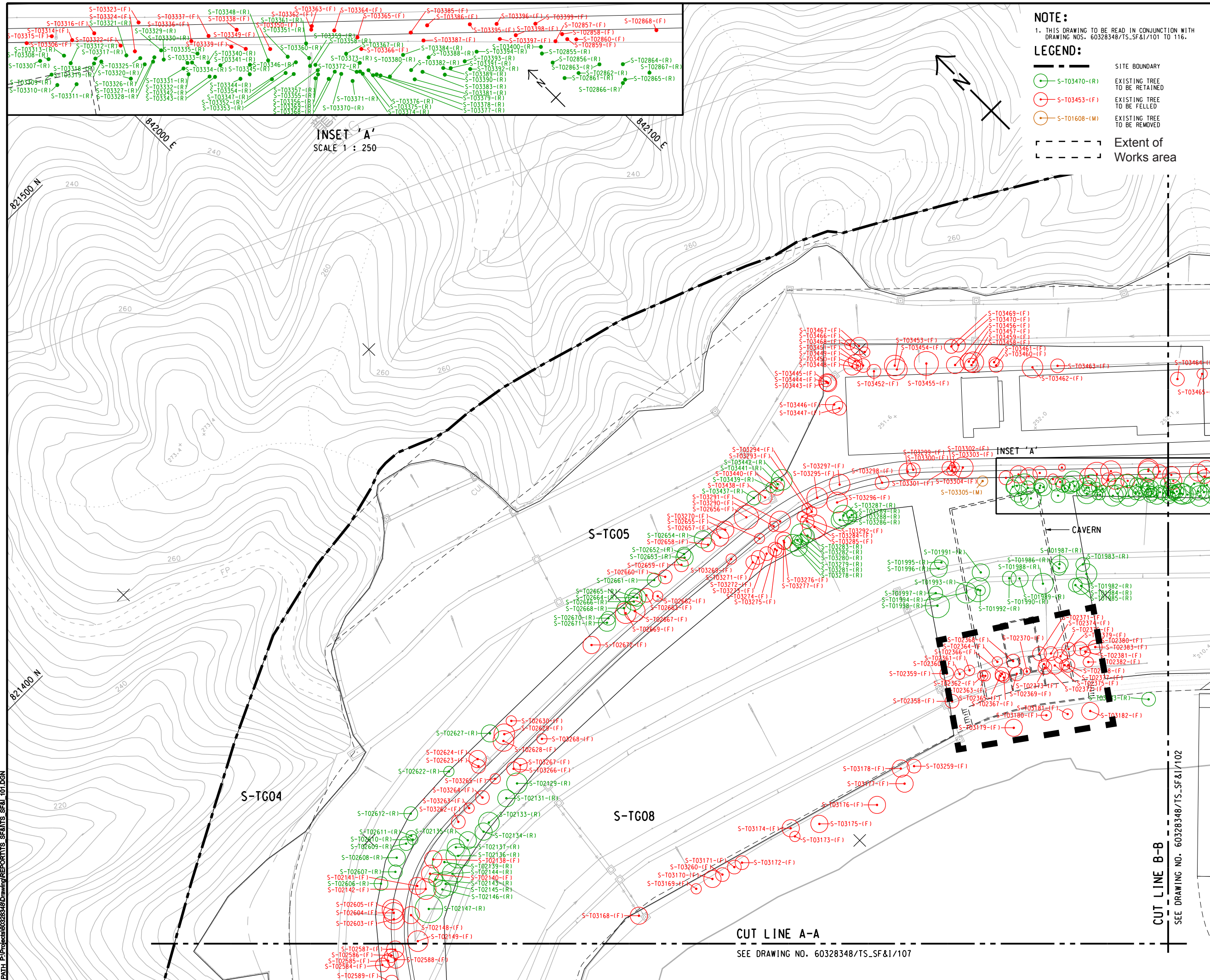


ISO A1 594mm x 841mm  
 Approved:  
 Checked:  
 Designer:  
 Project Management Initials:

Pld File by: LINC2 2015/09/21  
 PATH: P:\Projects\60328348\Drawings\REPORTS\_SF&I\_101.DGN



**NOTE:**  
 1. THIS DRAWING TO BE READ IN CONJUNCTION WITH DRAWING NOS. 60328348/TS\_SF&I/101 TO 116.

**LEGEND:**

- SITE BOUNDARY
- S-T03470-(R) EXISTING TREE TO BE RETAINED
- S-T03453-(F) EXISTING TREE TO BE FELLED
- S-T01608-(M) EXISTING TREE TO BE REMOVED
- Extent of Works area

**AECOM**

**PROJECT**  
 项目  
**DEVELOPMENT OF ANDERSON ROAD QUARRY SITE - INVESTIGATION, DESIGN AND CONSTRUCTION**

**CLIENT**  
 业主  
**CEDD** 土木工程拓展署  
 Civil Engineering and Development Department

**CONSULTANT**  
 工程顾问公司  
**AECOM Asia Company Ltd.**  
 www.aecom.com

**SUB-CONSULTANTS**  
 分包工程顾问公司

**Appendix 9-1**  
**Tree Survey**  
 September 2015

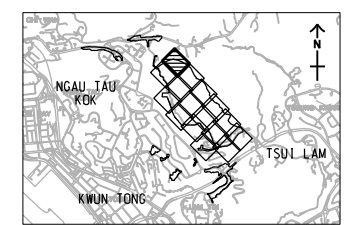
**ISSUE/REVISION**  
 修订

NO.	DATE	DESCRIPTION	CHK.

**SCALE**  
 比例  
 A1 1:500

**DIMENSION UNIT**  
 尺寸单位  
 METRES

**KEY PLAN**  
 索引图  
 A1 1:80000



**PROJECT NO.**  
 项目编号  
 60328348

**CONTRACT NO.**  
 合约编号  
 CE 10/2014 (CE)

**SHEET TITLE**  
 图名  
**TREE SURVEY GENERAL LAYOUT PLAN**

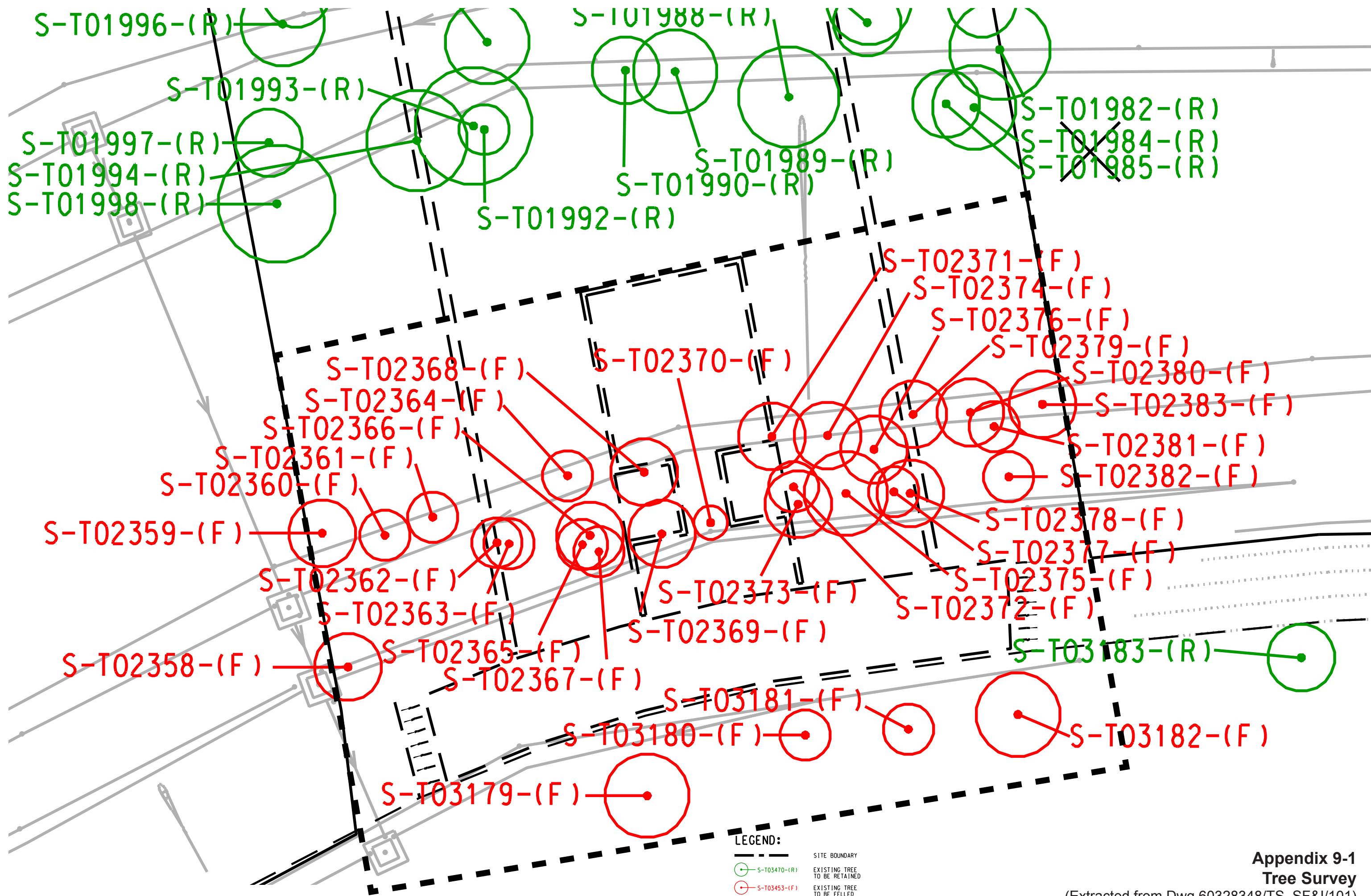
**SHEET NUMBER**  
 图号  
 60328348/TS\_SF&I/101

SHEET 1 OF 16

This drawing has been prepared for the use of AECOM's client. It may not be used, modified, reproduced or relied upon by third parties, except as agreed by AECOM or as required by law. AECOM accepts no responsibility, and denies any liability whatsoever, for any party that uses or relies on this drawing without AECOM's express written consent. Do not scale this document. All measurements must be obtained from the stated dimensions.

CUT LINE B-B  
 SEE DRAWING NO. 60328348/TS\_SF&I/102

CUT LINE A-A  
 SEE DRAWING NO. 60328348/TS\_SF&I/107



**LEGEND:**

	SITE BOUNDARY
	EXISTING TREE TO BE RETAINED
	EXISTING TREE TO BE FELLED
	EXISTING TREE TO BE REMOVED
	Extent of Works area



Tree #	District	Botanical Name	Chinese Name	Top of soil level (m)	Trunk Diameter at DBH (mm)	Height (m)	Spread (m)	Amenity Value (High/Medium/Low)	Form (Good/Fair/Poor)	Health (Good/Fair/Poor)	Structural Condition (Good/Fair/Poor)	Suitability for Transplanting (High/Medium/Low)	Conservation Status (Normal/Rare/Endanger/OVT/Tree Register)	Survival Rate after Transplant (High/Medium/Low)	Recommendation
S-T02358	Anderson Quarry	Acacia confusa	台灣相思	210.55	215	5	4	Low	Poor	Fair	Poor	Low	Normal	Low	at slope, low branching
S-T02359	Anderson Quarry	Acacia confusa	台灣相思	211.17	210	5	4	Low	Poor	Fair	Poor	Low	Normal	Low	at slope, leaning, low branching
S-T02360	Anderson Quarry	Acacia confusa	台灣相思	210.17	170	5	3	Low	Poor	Fair	Poor	Low	Normal	Low	at slope, multi-trunks
S-T02361	Anderson Quarry	Acacia confusa	台灣相思	210.04	150	4	3	Low	Poor	Poor	Poor	Low	Normal	Low	at slope, shallow soil
S-T02362	Anderson Quarry	Acacia confusa	台灣相思	210.11	140	5	3	Low	Poor	Fair	Poor	Low	Normal	Low	at slope, forked
S-T02363	Anderson Quarry	Acacia confusa	台灣相思	210.07	145	5	3	Low	Poor	Fair	Poor	Low	Normal	Low	at slope, shallow soil
S-T02364	Anderson Quarry	Acacia confusa	台灣相思	210.09	130	5	3	Low	Poor	Fair	Poor	Low	Normal	Low	at slope, shallow soil
S-T02365	Anderson Quarry	Acacia confusa	台灣相思	210.20	155	5	3	Low	Poor	Fair	Poor	Low	Normal	Low	at slope, leaning, crack at trunk
S-T02366	Anderson Quarry	Acacia confusa	台灣相思	210.14	105	5	4	Low	Poor	Fair	Poor	Low	Normal	Low	at slope, shallow soil
S-T02367	Anderson Quarry	Acacia confusa	台灣相思	210.15	110	4	3	Low	Poor	Fair	Poor	Low	Normal	Low	at slope, leaning
S-T02368	Anderson Quarry	Acacia confusa	台灣相思	209.91	230	5	4	Low	Poor	Poor	Poor	Low	Normal	Low	at slope, shallow soil
S-T02369	Anderson Quarry	Acacia confusa	台灣相思	210.15	145	6	4	Low	Poor	Poor	Poor	Low	Normal	Low	at slope, leaning
S-T02370	Anderson Quarry	Acacia confusa	台灣相思	210.17	110	5	2	Low	Poor	Fair	Poor	Low	Normal	Low	at slope, leaning
S-T02371	Anderson Quarry	Acacia confusa	台灣相思	210.30	170	6	4	Low	Poor	Fair	Poor	Low	Normal	Low	at slope, leaning, low branching
S-T02372	Anderson Quarry	Acacia confusa	台灣相思	210.17	155	6	3	Low	Poor	Fair	Poor	Low	Normal	Low	at slope, leaning, low branching

Development of Anderson Road Quarry Site  
Investigation, Design and Construction  
Tree Assessment Schedule

Tree #	District	Botanical Name	Chinese Name	Top of soil level (m)	Trunk Diameter at DBH (mm)	Height (m)	Spread (m)	Amenity Value (High/Medium/Low)	Form (Good/Fair/Poor)	Health (Good/Fair/Poor)	Structural Condition (Good/Fair/Poor)	Suitability for Transplanting (High/Medium/Low)	Conservation Status (Normal/Rare/Endanger/OVT/Tree Register)	Survival Rate after Transplant (High/Medium/Low)	Recommendation
S-T02373	Anderson Quarry	Acacia confusa	台灣相思	210.15	195	6	4	Low	Poor	Fair	Poor	Low	Normal	Low	at slope, shallow soil
S-T02374	Anderson Quarry	Acacia confusa	台灣相思	210.14	145	6	4	Low	Poor	Fair	Poor	Low	Normal	Low	at slope, shallow soil
S-T02375	Anderson Quarry	Acacia confusa	台灣相思	210.19	240	6	5	Low	Poor	Fair	Poor	Low	Normal	Low	at slope, shallow soil
S-T02376	Anderson Quarry	Acacia confusa	台灣相思	210.15	150	6	4	Low	Poor	Fair	Poor	Low	Normal	Low	at slope, shallow soil
S-T02377	Anderson Quarry	Acacia confusa	台灣相思	210.23	145	5	3	Low	Poor	Fair	Poor	Low	Normal	Low	at slope, shallow soil
S-T02378	Anderson Quarry	Acacia confusa	台灣相思	210.28	120	6	4	Low	Poor	Fair	Poor	Low	Normal	Low	at slope, shallow soil
S-T02379	Anderson Quarry	Acacia confusa	台灣相思	210.51	170	6	4	Low	Poor	Fair	Poor	Low	Normal	Low	at slope, shallow soil
S-T02380	Anderson Quarry	Acacia confusa	台灣相思	210.34	175	6	4	Low	Poor	Fair	Poor	Low	Normal	Low	at slope, collapsed trunk
S-T02381	Anderson Quarry	Acacia confusa	台灣相思	210.18	240	5	3	Low	Poor	Fair	Poor	Low	Normal	Low	at slope, forked
S-T02382	Anderson Quarry	Acacia confusa	台灣相思	210.43	245	4	3	Low	Poor	Fair	Poor	Low	Normal	Low	at slope, leaning, poor taper
S-T02383	Anderson Quarry	Acacia confusa	台灣相思	210.38	210	6	4	Low	Poor	Fair	Poor	Low	Normal	Low	at slope, multi-trunks
S-T03179	Anderson Quarry	Acacia confusa	台灣相思	201.37	225	6	5	Low	Poor	Fair	Poor	Low	Normal	Low	
S-T03180	Anderson Quarry	Acacia confusa	台灣相思	201.34	200	5	3	Low	Poor	Fair	Poor	Low	Normal	Low	
S-T03181	Anderson Quarry	Melaleuca cajuputi subsp. cumingiana	白千層	201.35	135	5	3	Med	Fair	Fair	Fair	Low	Normal	Low	
S-T03182	Anderson Quarry	Casuarina equisetifolia	木麻黃	201.25	150	8	5	Med	Fair	Fair	Fair	Low	Normal	Low	